

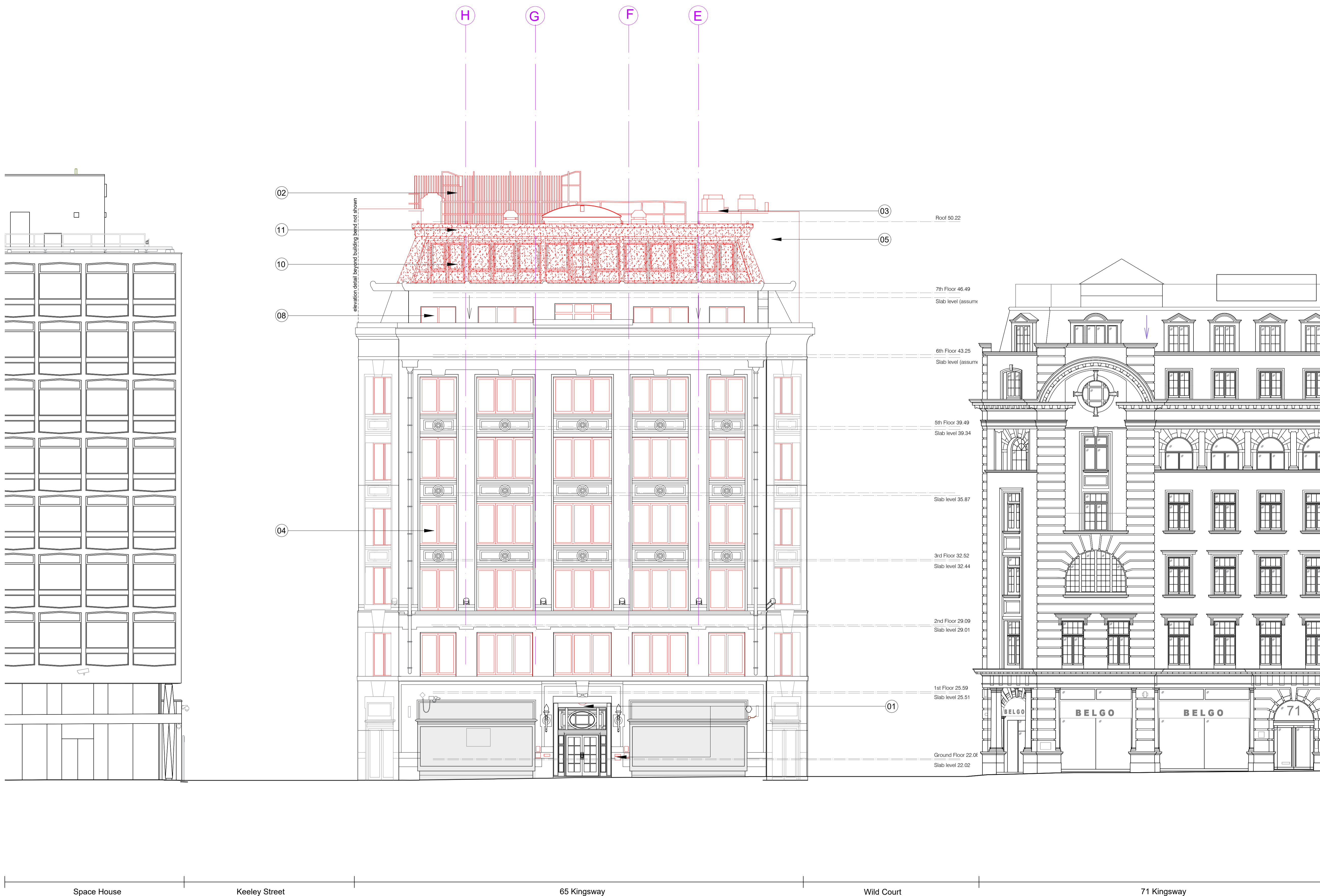
# BARR GAZETAS

Note:

1. Existing soffit, ceiling mounted light and signage to main entrance to be removed.
2. Existing metal plant screen removed.
3. Existing roof plant removed.
4. Existing modern windows removed throughout whole facade.
5. Existing modern lift core demolished.
6. -
7. -
8. Existing 1920's extension and canopy retained, windows removed.
9. Existing lift overrun demolished.
10. 7th floor mansard storey to be demolished.
11. Existing roof structure to be demolished.

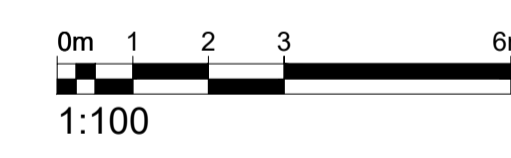
KEY:

- Demolition and strip out
- Facade cladding removed only. Structure retained
- Demolition and strip out
- Not in project scope

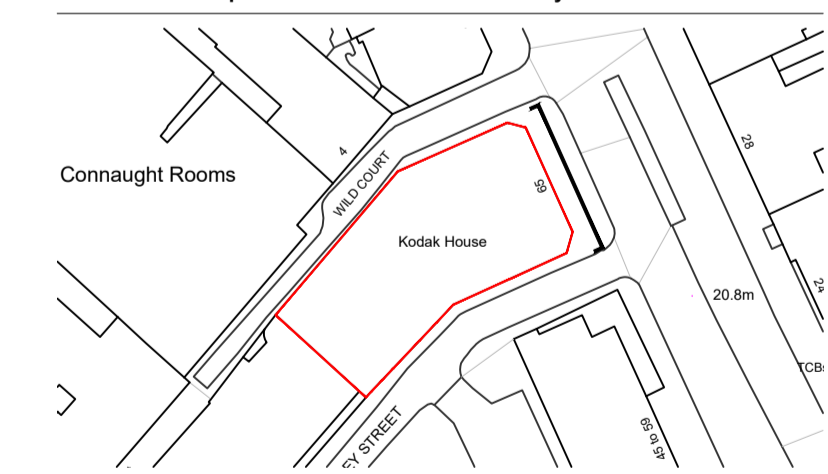


Space House      Keeley Street      65 Kingsway      Wild Court      71 Kingsway

01 Demolition Kingsway Elevation  
15.202 1:100@A1, 1:200@A3



P4	For Planning	AC	28.11.19
Rev.	Description	By	Date



Client  
Kings Keeley Limited C/o Clearbell Capital LLP

Project  
65 Kingsway - Base Scheme

Title  
Demolition Kingsway Elevation

Status	Purpose of issue	RIBA stage
S2	For Planning	2

Project No.	Drawn	Checked	Scale	Rev.
1914	FB	TJ	1:100 @ A1 1:200 @ A3	P4

Drawing No.  
1914-BG-01-ZZ-DR-A-15.272

Do not scale from this drawing. The Contractor is to take and check all dimensions on site before work commences. Discrepancies must be reported to the Architect. Subcontractors must verify all dimensions on site before making a shop drawing or commencing manufacturing. This drawing is copyright. ©

© Copyright Barr Gazetas Ltd.  
A 116 Heddon Street, London, W1B 4BG  
T 0207 638 5581  
W www.barrgazetas.com