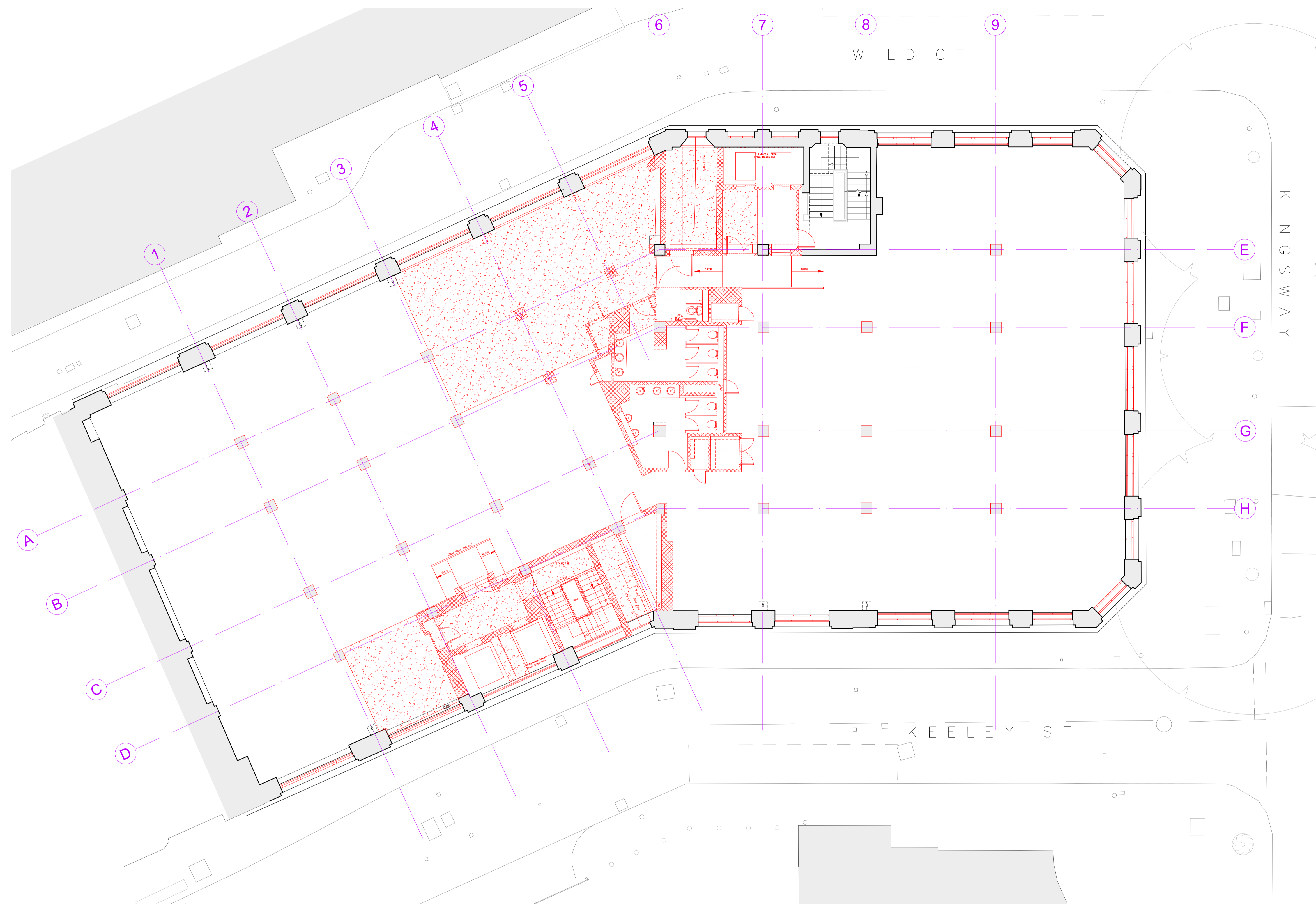


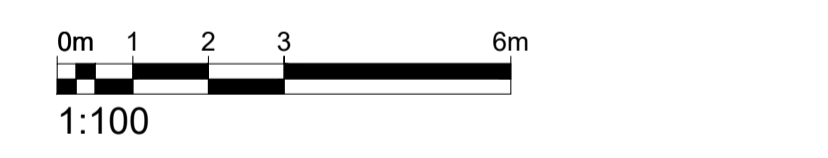
# BARR GAZETAS



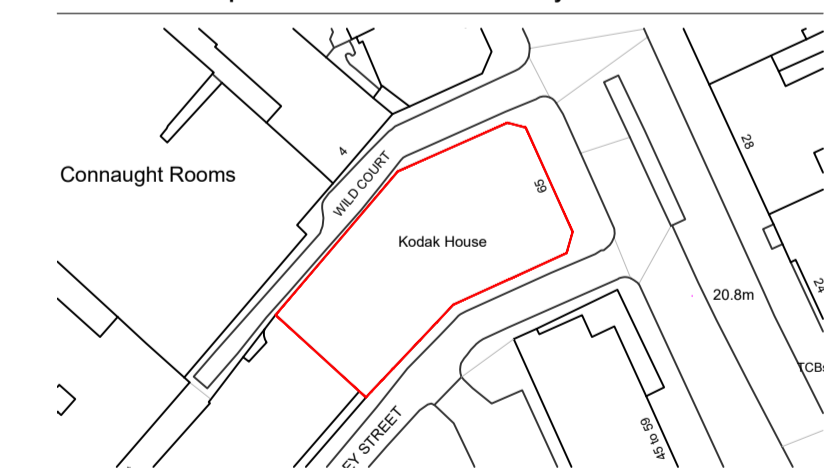
- KEY:**
- Existing walls
  - Demolition and strip out
  - Demolition and strip out
  - Strip out of finished and concrete column encasement to reveal existing steel column
  - Floor slab demolition

**GENERAL NOTE:**  
All modern (non-original) finishes, fixtures, fittings and linings to be removed from walls, floors and ceilings throughout.

01 Demolition Second Floor Plan  
15.204 1:100@A1, 1:200@A3



P4	For Planning	AC	28.11.19
Rev.	Description	By	Date



**Client**  
Kings Keeley Limited C/o Clearbell Capital LLP  
**Project**  
65 Kingsway - Base Scheme

**Title**  
Demolition Second Floor Plan

Status	Purpose of issue	RIBA stage
S2	For Planning	2

Project No.	Drawn	Checked	Scale	Rev.
1914	FB	TJ	1:100 @ A1 1:200 @ A3	P4

**Drawing No.**  
1914-BG-01-02-DR-A-15.204

Do not scale from this drawing. The Contractor is to take and check all dimensions on site before work commences. Discrepancies must be reported to the Architect. Subcontractors must verify all dimensions on site before making a shop drawing or commencing manufacturing. This drawing is copyright ©  
© Copyright Barr Gazetas Ltd.  
A 10 Heddon Street, London, W1B 4BG  
T 0207 638 5581  
W www.barrgazetas.com