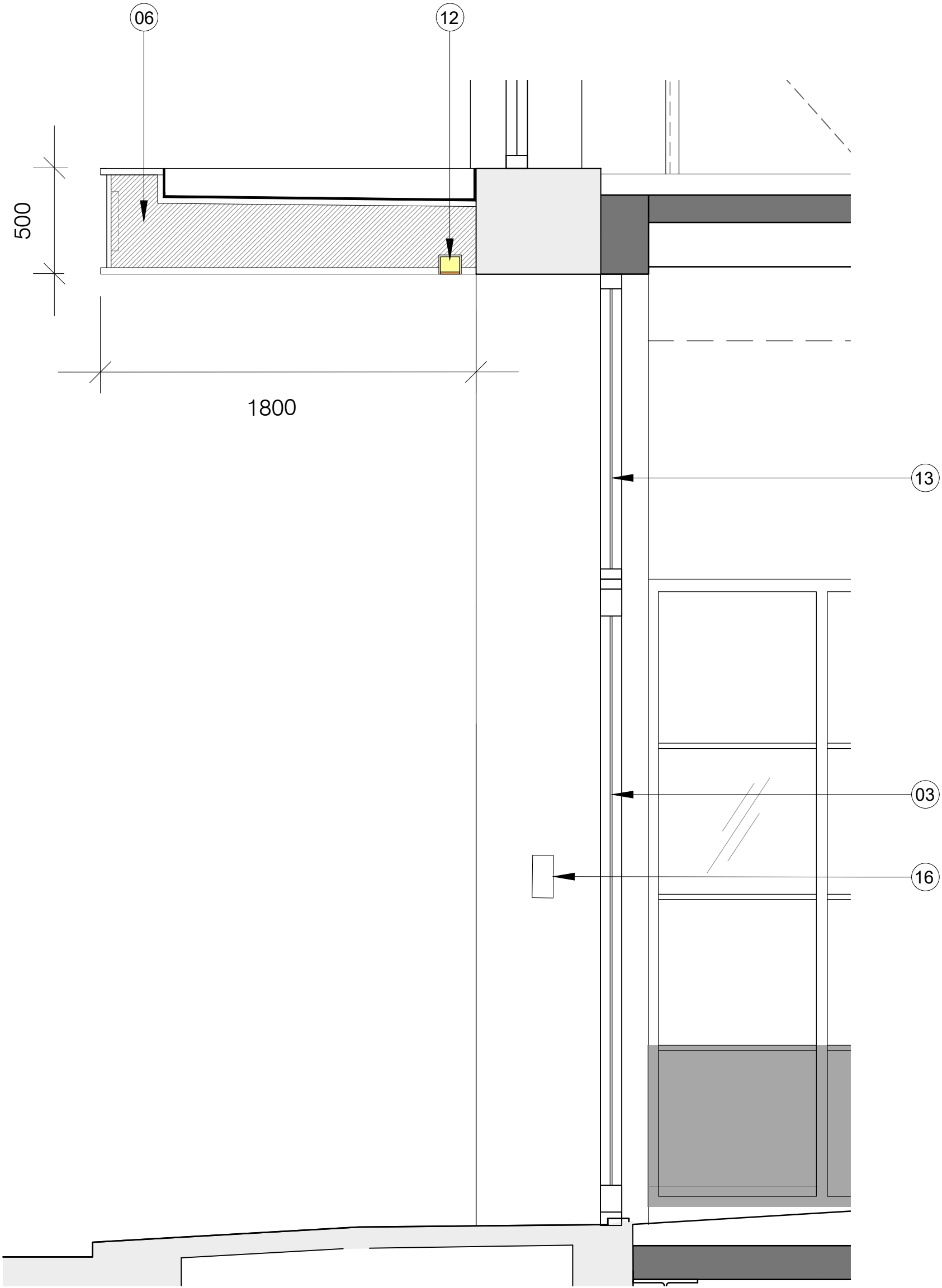
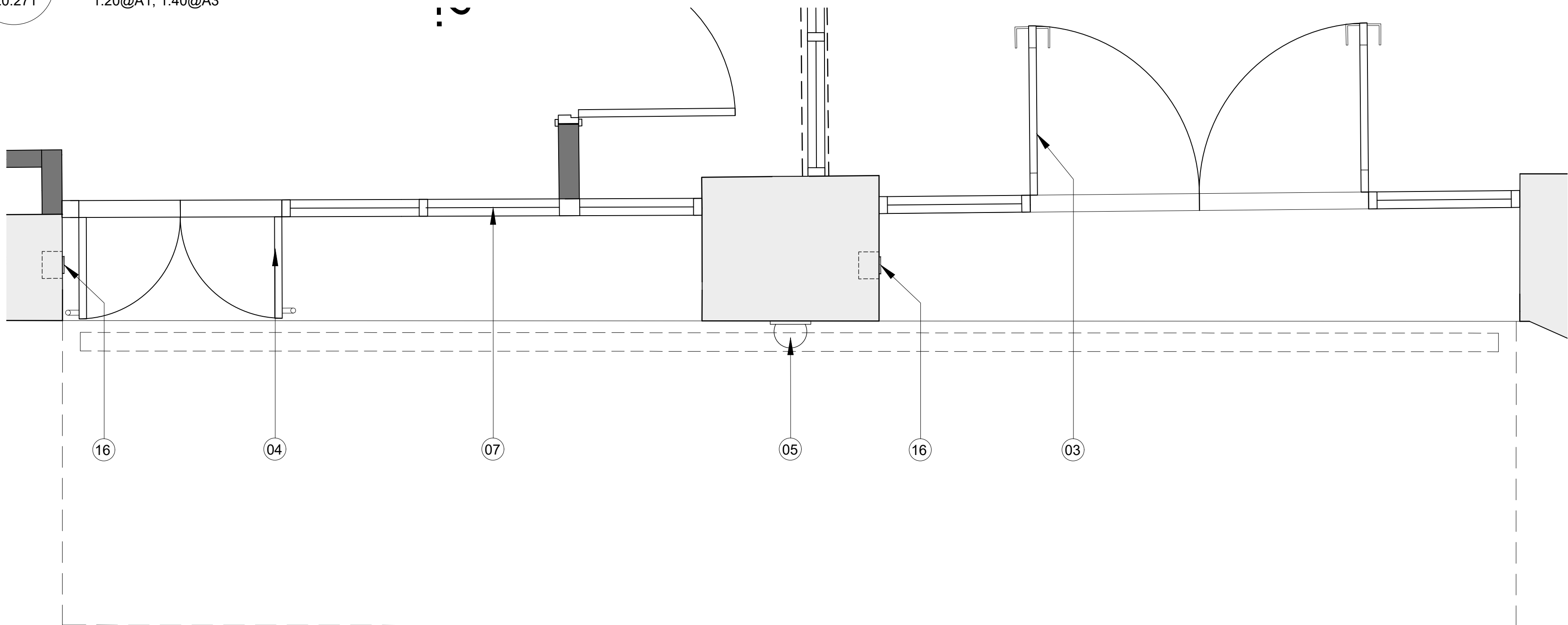


01
20.271
Entrance Detail - Elevation
1:20@A1, 1:40@A3



02
20.255
Entrance Detail - Section
1:20@A1, 1:40@A3



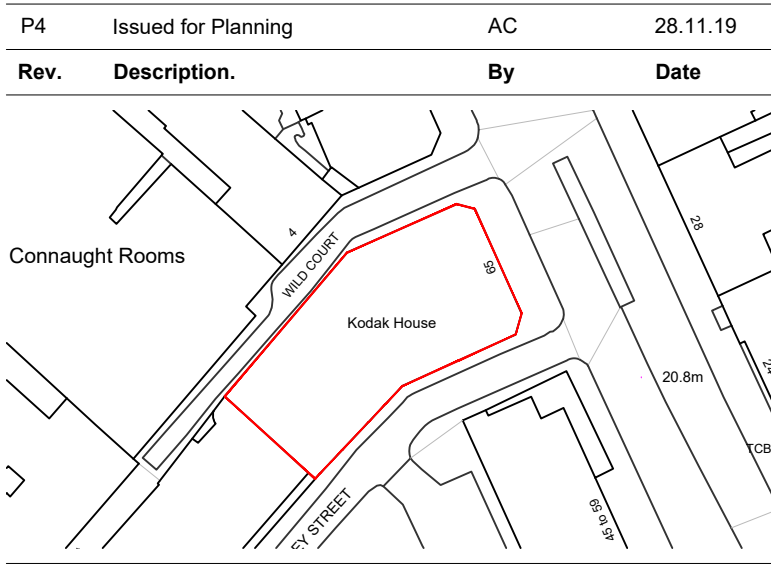
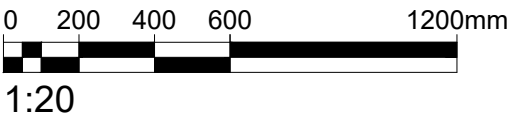
03
20.202
Entrance Detail - Plan
1:20@A1, 1:40@A3

Note:

- Existing portland stone cleaned and repaired.
- Existing red brick facade repaired and cleaned.
- New black metal framed, double glazed entrance doors. Black colour.
- New black solid metal bike entrance door with brass finish ironmongery.
- New wall mounted external circular bulb lighting. Brass finish.
- New projecting black metal entrance canopy with illuminated signage and LED integrated lighting.
- New double glazed crittal style steel slim line windows. Black colour.
-
- Existing black spandrel panels cleaned and repaired.
- New metal pull handles with engraved lettering. Brass colour.
- New bike entrance laser cut metal signage. Brass colour.
- LED integrated strip light to canopy.
- Fixed minimal black metal framed glass panel.
- Illuminated signage.
- Laser cut metal signage. Brass finish.
- Access control panel. Black metal finish.

KEY :

- Existing Walls
- Proposed Walls



Client			
Kings Keeley Limited C/o Clearbell Capital LLP			
Project			
65 Kingsway - Base Scheme			
Title			
Keeley Street Entrance Detail			
Status	Purpose of issue	RIBA stage	
S2	For Planning	2	
Project No.	Drawn	Checked	Scale
1914	FB	TJ	1:20 @ A1 1:40 @ A3
Rev.			
P4			
Drawing No.			
1914-BG-01-00-DR-A-34.601			
Do not scale from this drawing. The Contractor is to take and check all dimensions on site before work commences. Discrepancies must be reported to the Architect. Subcontractors must verify all dimensions on site before making a shop drawing or commencing manufacturing. This drawing is copyright. ©			
© Copyright Barr Gazetas Ltd. A 10 Heddon Street, London, W1B 4BG T 0207 636 5561 W www.barrgazetas.com			