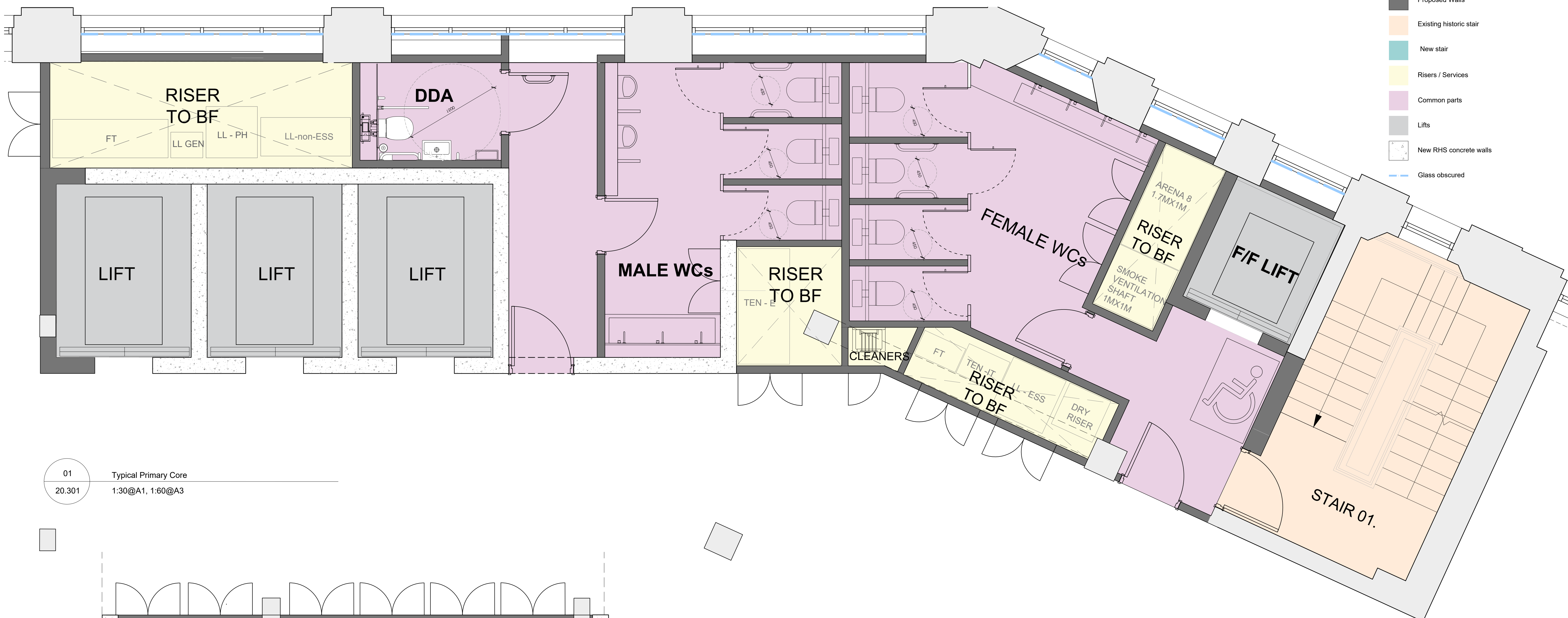
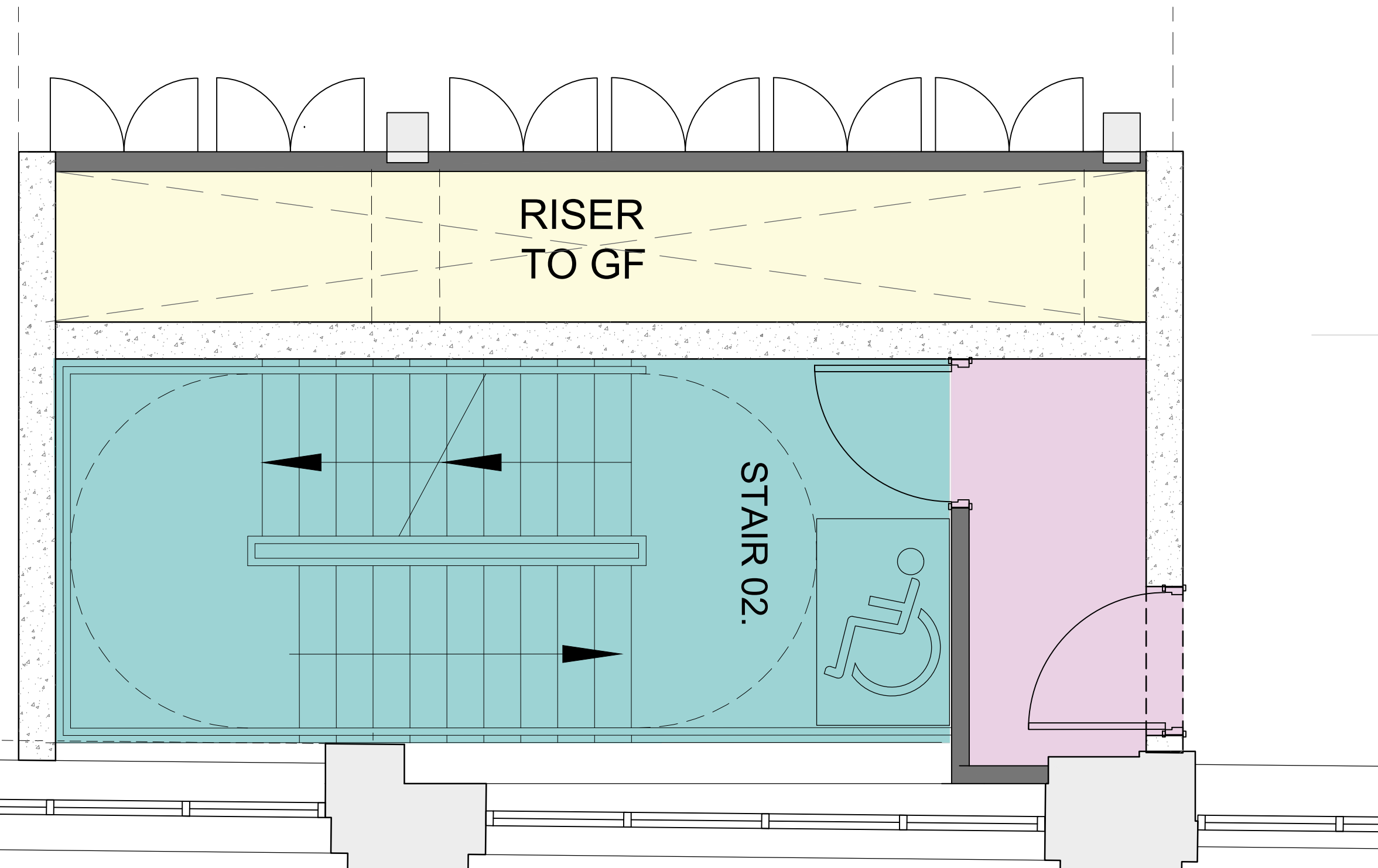


BARR GAZETAS

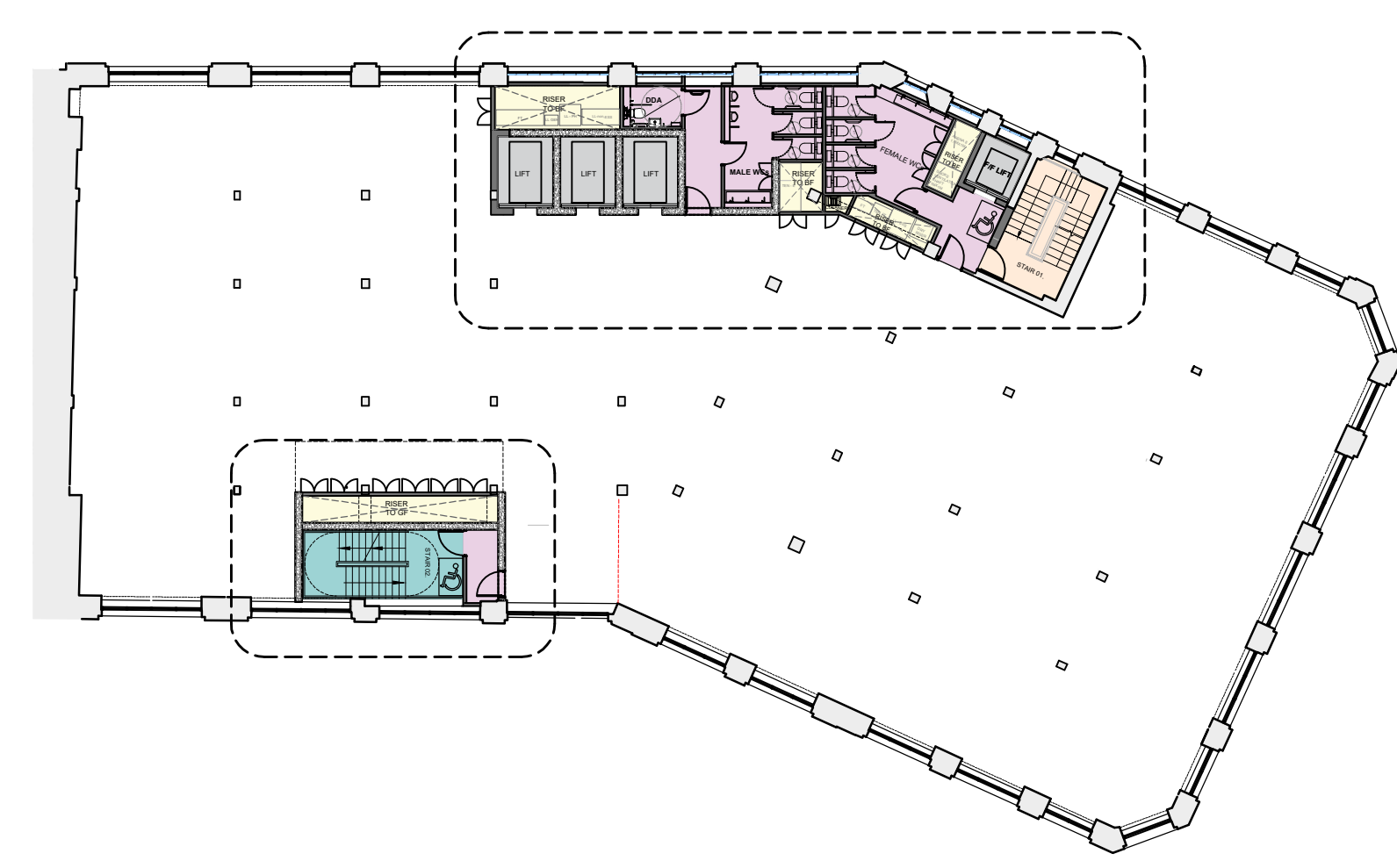
- KEY:
- Existing Walls
 - Proposed Walls
 - Existing historic stair
 - New stair
 - Risers / Services
 - Common parts
 - Lifts
 - New RHS concrete walls
 - Glass obscured



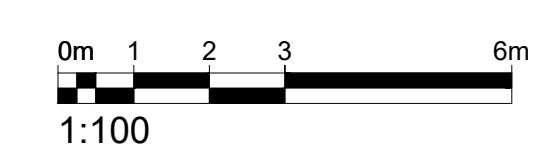
01 Typical Primary Core
20.301 1:30@A1, 1:60@A3



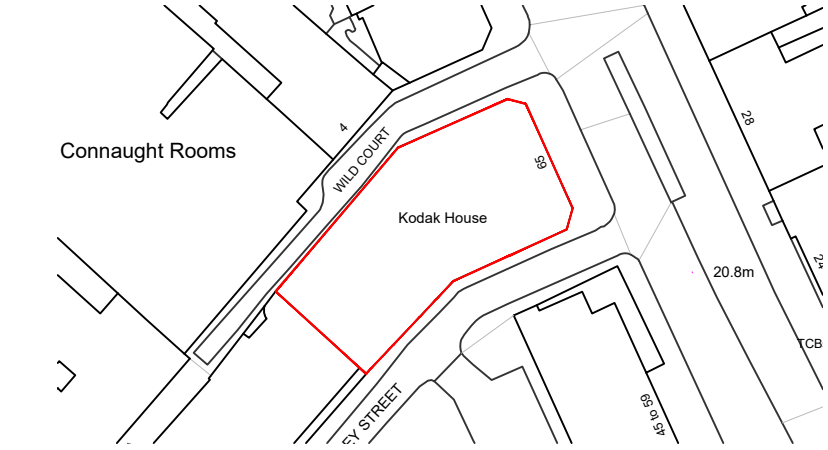
02 Typical Secondary Core
20.301 1:30@A1, 1:60@A3



03 Typical Office Floor Plan
20.206 1:30@A1, 1:60@A3



Rev.	Description	By	Date
P4	Issued for Planning	AC	28.11.19



Client
Kings Keeley Limited C/o Clearbell Capital LLP

Project
65 Kingsway - Base Scheme

Title
Typical Core Details

Status	Purpose of issue	RIBA stage
S2	For Planning	2

Project No.	Drawn	Checked	Scale	Rev.
1914	FB	TJ	1:30 @ A1 1:60 @ A3	P4

Drawing No.
1914-BG-01-ZZ-DR-A-20.301

Do not scale from this drawing. The Contractor is to take and check all dimensions on site before work commences. Discrepancies must be reported to the architect. Subcontractors must verify all dimensions on site before making a shop drawing or commencing manufacturing. This drawing is copyright. ©

© Copyright Barr Gazetas Ltd.
A 10 Heddon Street, London, W1B 4BG
T 0207 638 5581
W www.barrgazetas.com