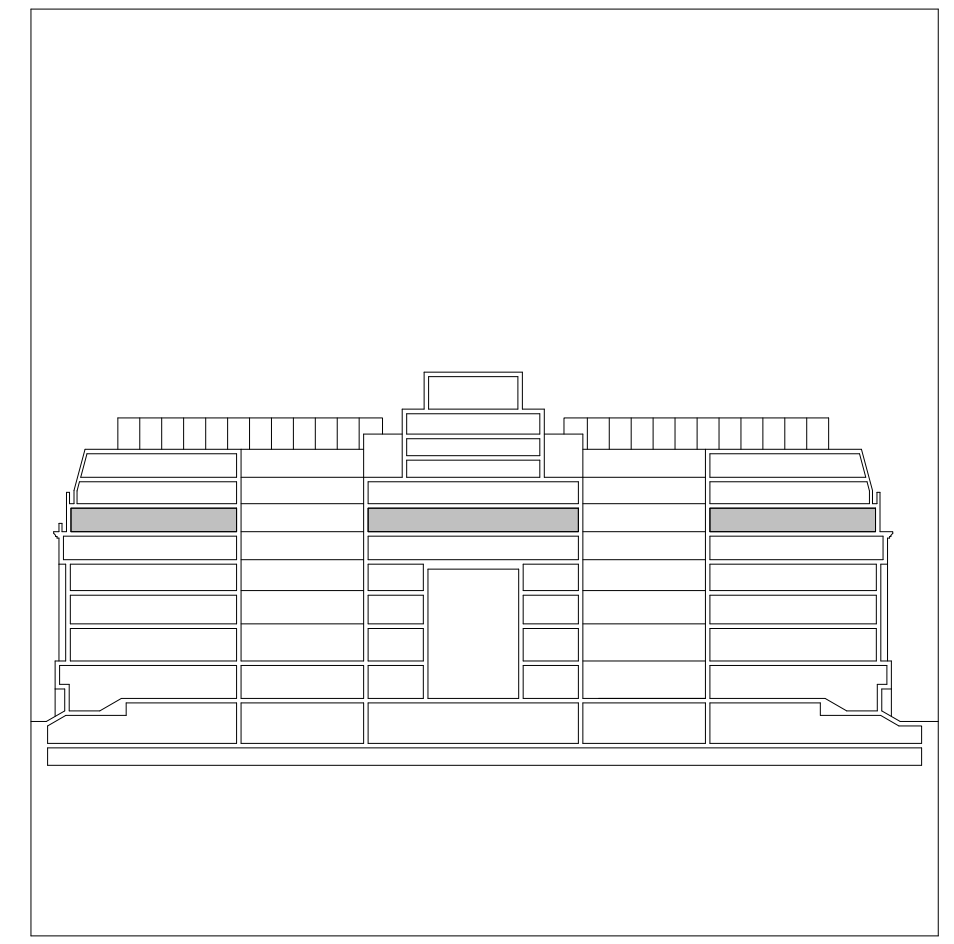
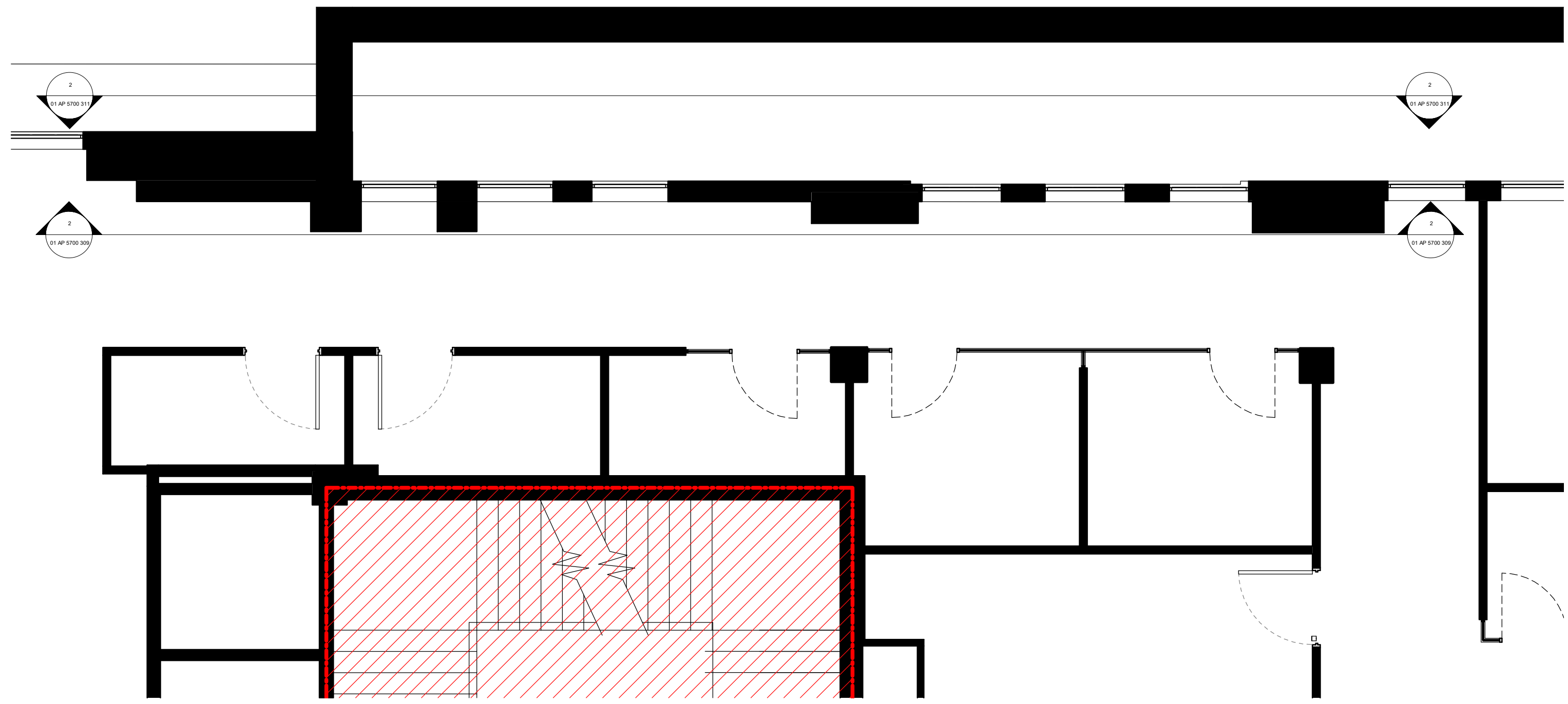


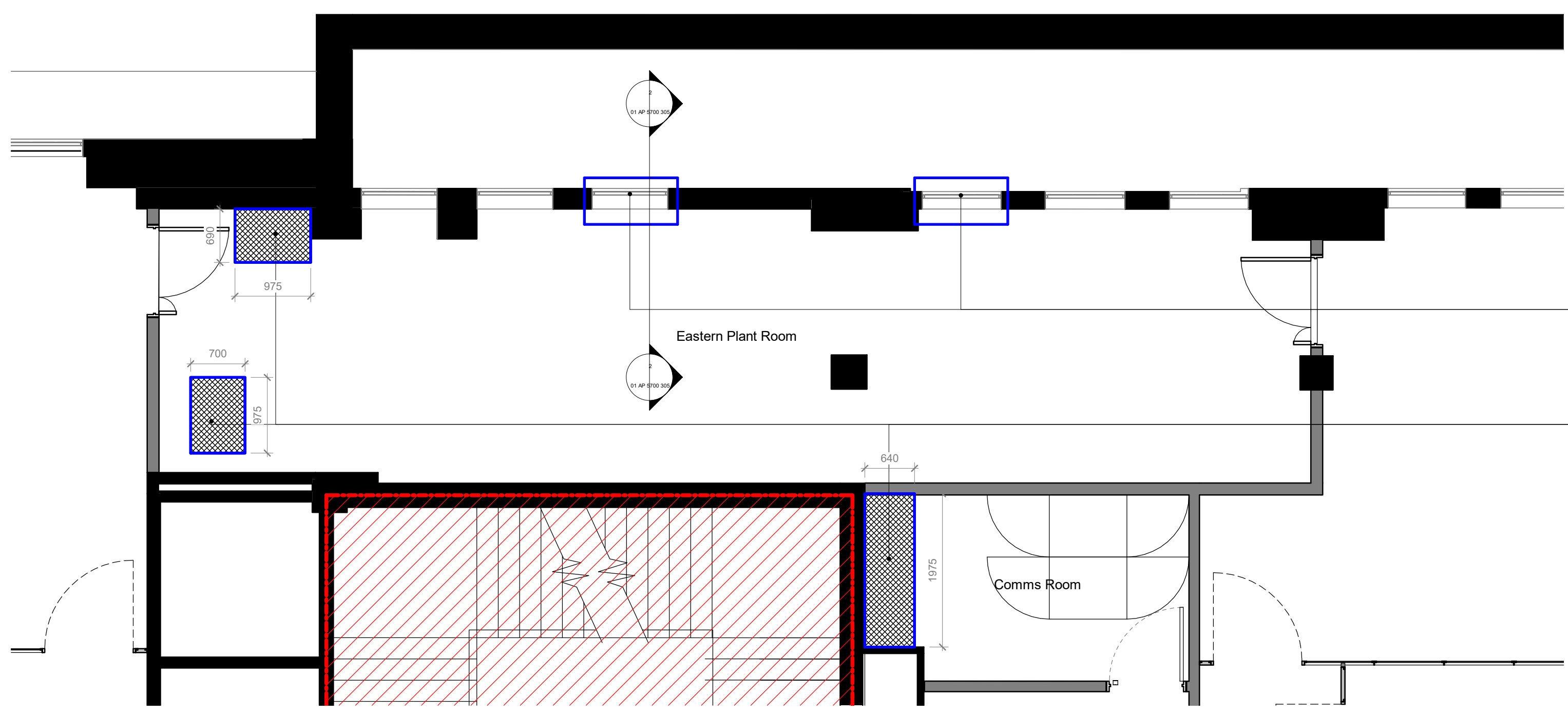
All dimensions are in mm unless otherwise stated  
 All dimensions to be verified on site before proceeding with the work  
 Any discrepancies to be notified in writing to Architect immediately  
 All boundaries indicative only and to be confirmed by others



- GENERAL KEY:**
- Indicates areas excluded from scope
  - Ductwork penetrations through slab
  - Ductwork penetrations through window opening



**2** Existing Level 05 Layout at Southampton Row  
 1 : 50



**1** Proposed Level 05 Layout at Eastern Plant Room with Ductwork Penetrations  
 1 : 50

Existing windows removed to allow ventilation ducts to pass through opening, windows to be retained for potential future reinstatement

Opening up of floor slab to allow ductwork from the 5th floor to pass through to the 4th. For exact locations and specifications, please refer to Structural Engineers drawings

REV	DATE	NOTES	WP
-	29.11.19	Issued for Planning	INT

**PLANNING**

**HUTCHINSON & PARTNERS**  
 3.14 The Record Hall, 16-16A Baldwin's Garden, London, EC1N 7RJ  
 t. 020 3176 8196 e. info@hutchinsonandpartners.com w. www.hutchinsonandpartners.com

JOB TITLE  
**LABS, Victoria House, Camden**

DRAWING TITLE / LOCATION  
**Existing and Proposed Level 05 Eastern Plant Room Layout**

DRAWN BY	CHECKED	SCALE @ A1	STATUS
WP	JB	1:50	PLANNING

PROJECT	DRAWING NO	REVISION
19023	01 AP 5700 303	-

CLIENT

