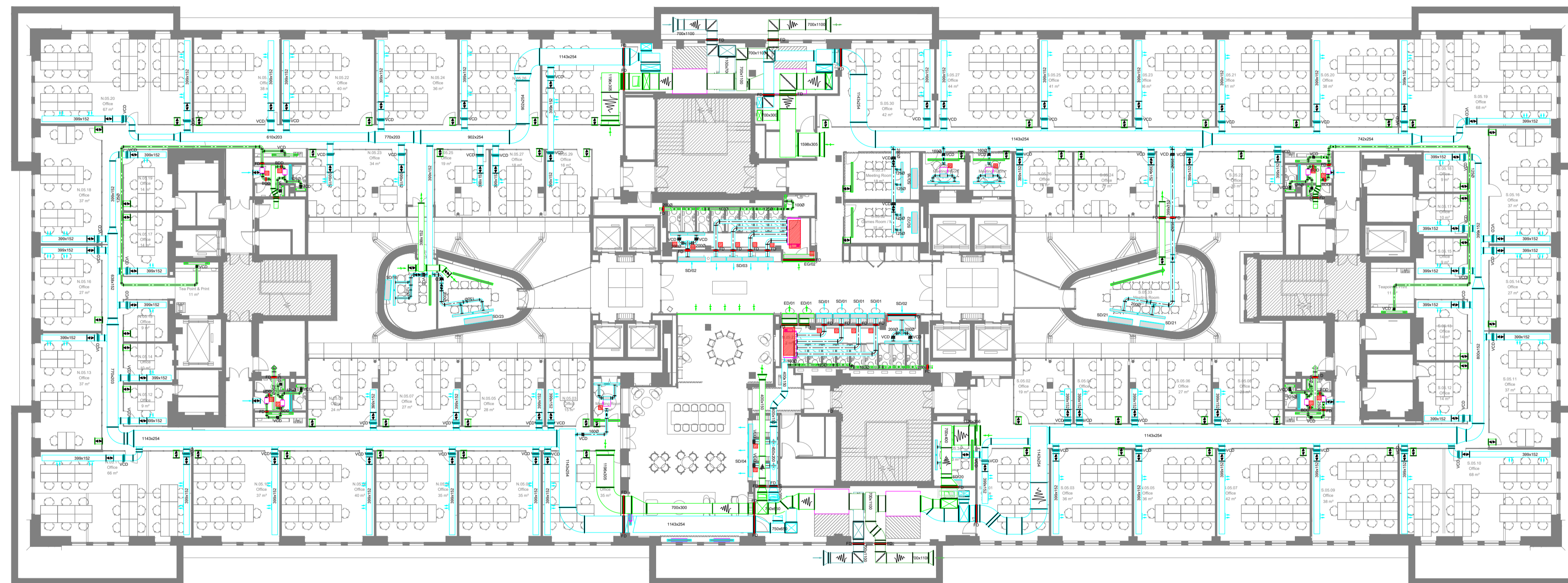


Notes

1. The building services design information indicated on this drawing is to Technical Design (feasible-generic) Stage as defined in BSRIA BG/6 2018.
2. This drawing is to be read in conjunction with the remainder of the Scotch Partners design information.
3. The selected procurement route is design and build and the contractor shall make due allowance for developing the design and undertaking the final coordination.
4. The Contractor shall note that the base architectural design information used in the production of this drawing has not been fully verified by dimensional survey. The Contractor shall make due allowance for any coordination required as a result of the site condition varying from what is indicated on this drawing.
5. Much of the services installation is exposed and because the final aesthetic appearance is very important to the Client, the Contractor shall ensure that final coordination is carefully planned and executed. In this respect a high quality workmanship is expected (Benchmarks to be agreed and signed off).
6. Figured dimensions are approximate and subject to site conditions.
7. For setting out of all visible terminals and accessories refer to the architects information.
8. All exposed ductwork to be flat oval except where stated by size.
9. All exposed ductwork to be powder coated white.



Legend

- Concealed ducted fan coil unit
- Supply ductwork
- Extract ductwork
- VCD Volume control damper
- FD Fire damper
- Access panel
- Cross talk attenuator
- Attenuator
- Duct mounted supply diffuser
- Disc valve
- Linear slot grille with plenum
- Wall mounted linear slot supply diffuser
- BDD Back draught damper

Rev	Date	Description	Card	CHK

Architect  
**HUTCHINSON & PARTNERS**

Client  
**LABTECH**

Project  
**Victoria House Phase 1**

Drawing Title  
**Mechanical Services  
Ventilation  
Layout  
Fifth Floor**



Building Services Engineering | Sustainability | Acoustics  
ScotchPartners  
137 Farringdon Road  
London EC1R 3AD  
020 3544 5400  
www.scotchpartners.com

Issue **Stage 4**  
Date Oct 19 Scale @ A1 1:200  
Drawn By MW Checked By IO

Drawing No. **5228-SP-P1-05-DR-M-410** Rev **T0**