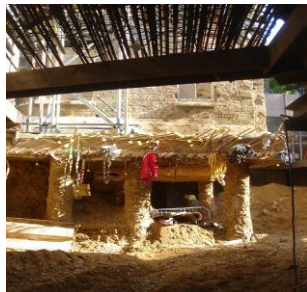


**TYPICAL EXAMPLES OF DIFFICULT SUPERSTRUCTURE RETENTION AND SUBSTANTIAL BASEMENT CONSTRUCTION IN LONDON**



16 Boltons Place, London  
 Formation of significant residential basements adjacent to and beneath existing

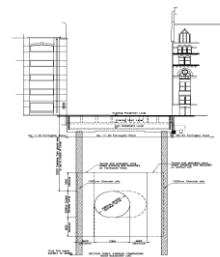
37 Loudon Road, London



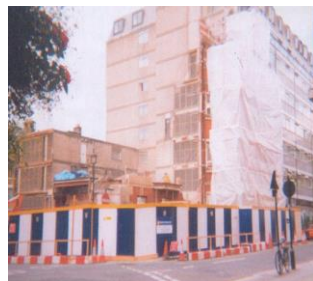
67 West Heath Road, London  
 New construction adjacent to existing buildings



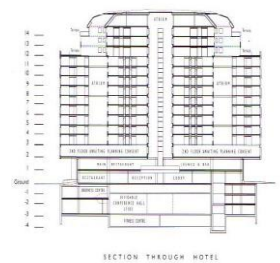
17-23 Farringdon Road, London  
 Construction of new retail, commercial and residential building over the proposed Crossrail link



Clifton Ford Hotel, London  
 Façade retention and new double basement leisure facility



Westminster Park Plaza, London  
 Construction of new luxury hotel by top-down method incorporating 4 basement levels



Fitzroy Place, W1 (former Middlesex Hospital Site)  
 Mixed office and residential development

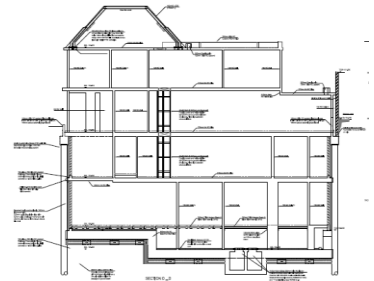




1-6 Clay Street, London  
 4m deep basement construction



60 Addison Road, Holland Park  
 4m basement with façade retention



5 Cannon Lane NW3  
 New residential double basement



12 The Grove, Highgate  
 6m deep basement construction



15 The Bishops Avenue  
 4m basement with façade retention



Whitefriars, London  
 Façade and water tower retention prior to basement construction



58-66 Cheshire Street, London  
 5m deep basement construction next to railway line



1 St Kildas Road N16  
 New single basement office facility



1 Southwick Yard W2  
 Underpinning/retaining walls - new residential lower ground floor