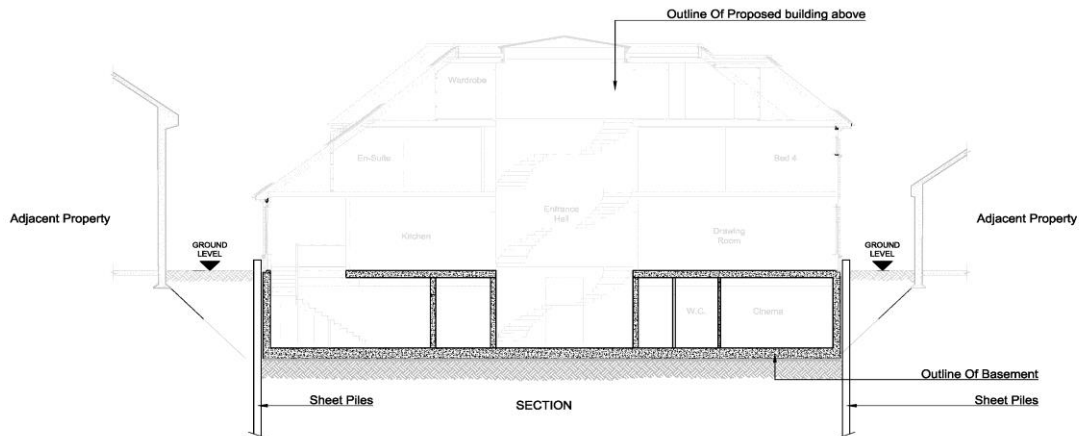


18 STORMONT ROAD, LONDON – new house in Highgate currently under construction



Current progress. Note metal sheet piling support installed ahead of excavation and temporary propping being installed as excavation progresses.

120 FINCHLEY ROAD, LONDON - new apartments incorporating basement and supporting three storey embankment and historic church to rear. Completed August 2018.



12 THE GROVE, LONDON - 2 new substantial houses in Highgate incorporating single storey basement. Completed 2015.



Basement during construction. Note sheet piling installed ahead of excavation and temporary propping installed as excavation proceeds.

CLAY STREET, LONDON - apartments incorporating single storey basement with party walls to three sides and fronting main Central London mews. Completed 2015.



ADDISON ROAD, LONDON - new house in Kensington incorporating 2 storey basement with swimming pool and retained façade. Completed 2014.



During construction

17-23 FARRINGDON ROAD, LONDON - apartments incorporating single storey basement directly over the Crossrail Tunnel. Completed 2011. The tunnel has just been constructed and remote monitoring of strain gauges installed during construction confirmed movements within calculated limits.

