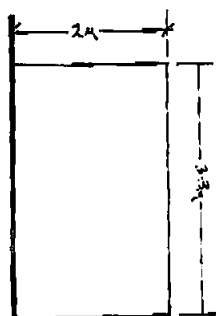


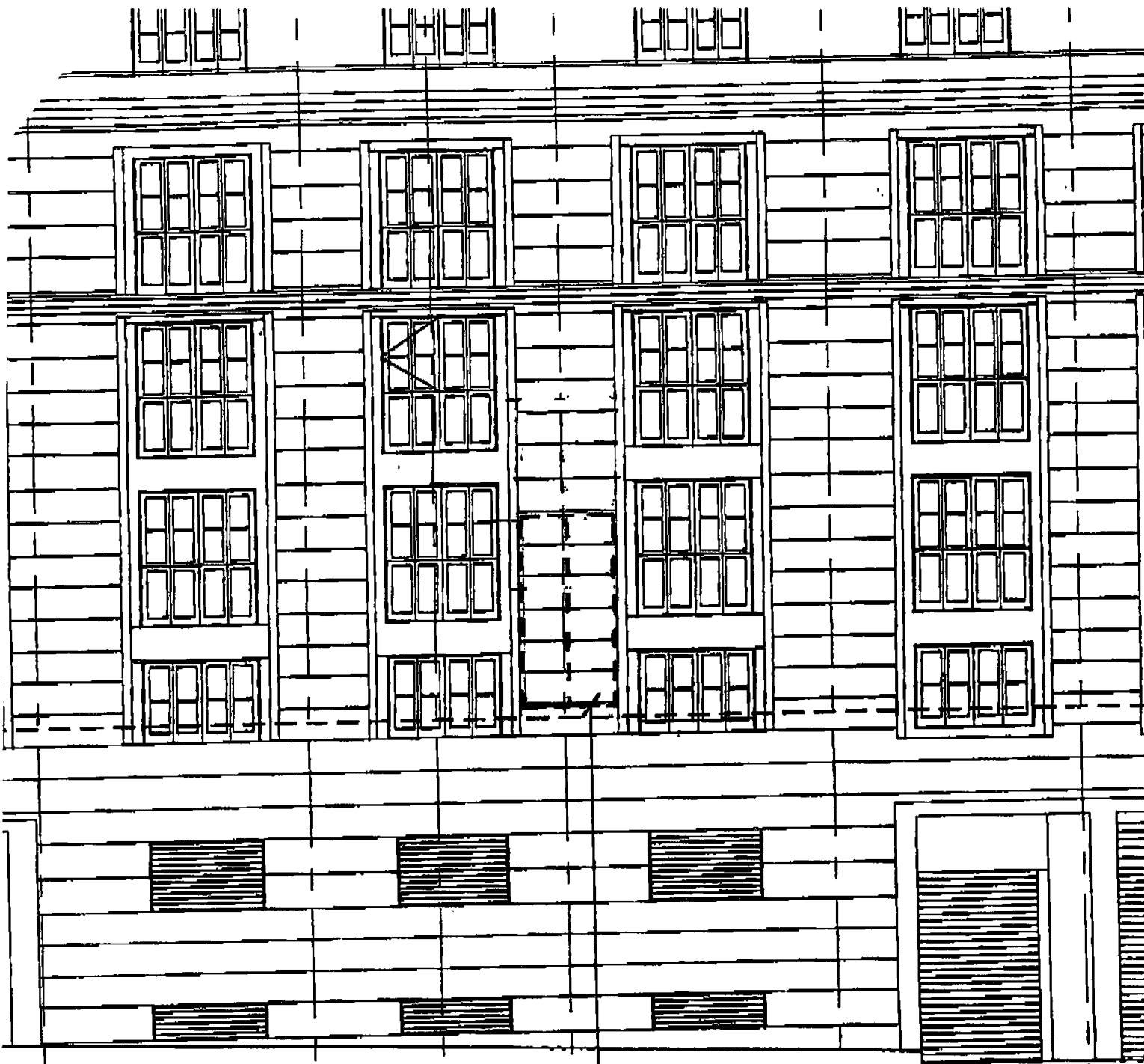
GILBEY
HOUSE



LONDON BOROUGH OF CAMDEN
TOWN AND COUNTRY PLANNING ACTS
16 NOV 1995
PLANS APPROVED
ON BEHALF OF THE COUNCIL

9580145R1
9570284R1

1:100



2 no. boards to form 'V' board
from 2.2 x 3.3 metre panels
fitted to 30 x 30 mm aluminium
section frame, on 150 x 150 mm
base plates, powder coated
Largest lettering : 1 m max

LONDON BOROUGH OF CAMDEN
TOWN AND COUNTRY PLANNING ACTS
16 NOV 1995
PLANS APPROVED
ON BEHALF OF THE COUNCIL

9580145R1
9570284R1

1:100

GILBEY HOUSE

76

APARTMENTS
FOR SALE

0171 123 1234

BEANEY PEARCE

S K

3.3m

2.2m

LONDON BOROUGH OF CANNON
TOWN AND COUNTRY PLANNING ACTS

16 NOV 1995

PLANS APPROVED
ON BEHALF OF THE COUNCIL

9580145R1995/70284R1

'V' BOARD ADVERTISEMENT

7608 SK2

1:20