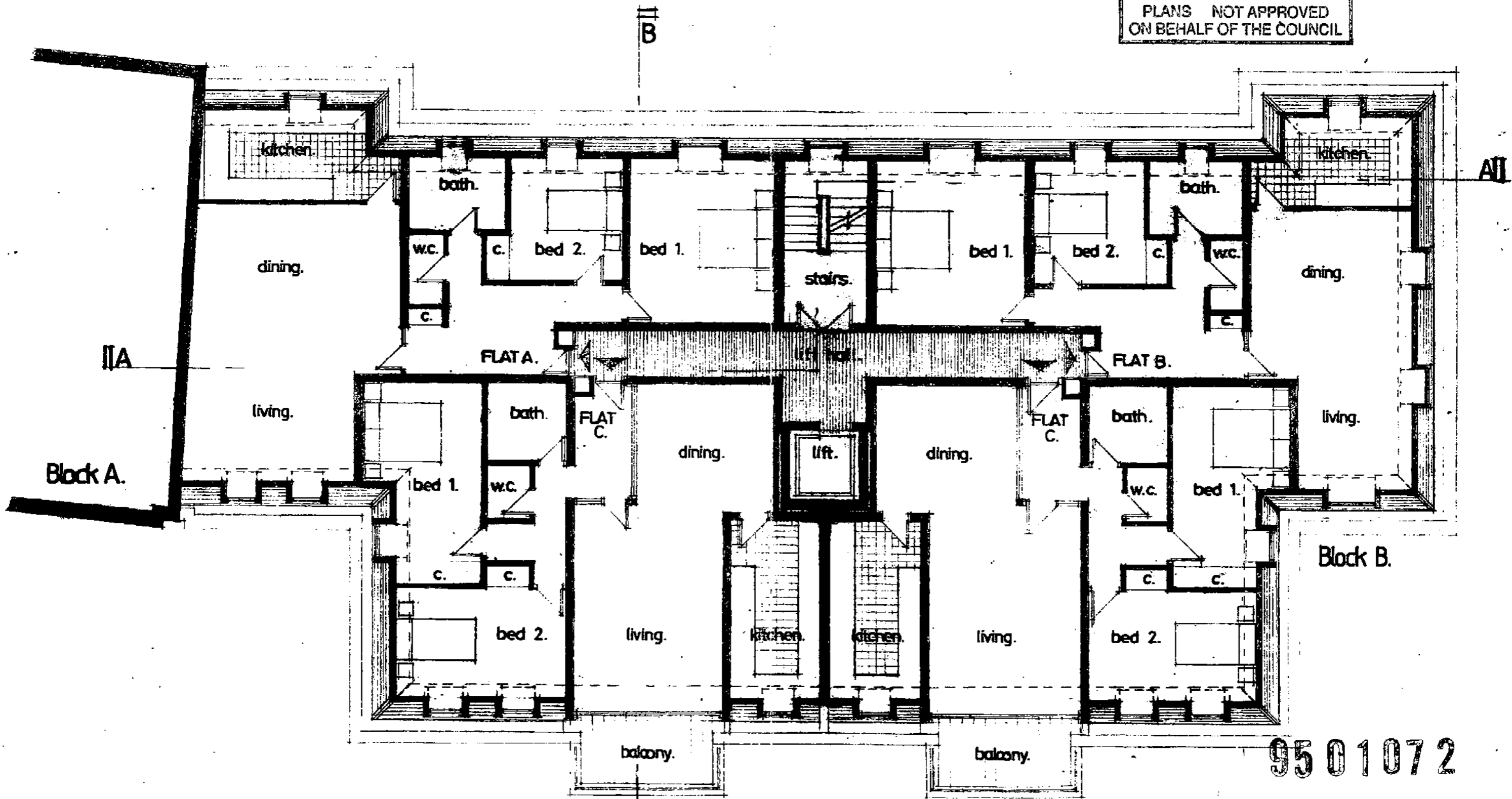


LONDON BOROUGH OF CAMDEN
 TOWN AND COUNTRY PLANNING ACTS
 28 JUL 1995
 PLANS NOT APPROVED
 ON BEHALF OF THE COUNCIL



<p>DATE: 28 JUL 1995</p>	<p>SCALE: 1/50</p>	<p>DATE: 28 JUL 1995</p>	<p>DARWIN COURT GLOUCESTER AVE. LONDON N12</p>		<p>Block B 8TH FLOOR PLAN</p>	
			<p>403:10</p>	<p>A</p>		