

DEPARTMENT OF THE ENVIRONMENT REFERENCES:  
(a) APP/X5210/A/95/260162 & (b) APP/X5210/A/96/265759

APPEALS UNDER SECTION 78 OF THE  
TOWN & COUNTRY PLANNING ACT 1990

BY

**TRUSTEES OF CENTRAL & METROPOLITAN ESTATES  
RETIREMENT BENEFITS SCHEME**

AGAINST

- A) THE DECISION OF THE LONDON BOROUGH OF CAMDEN TO REFUSE PLANNING PERMISSION FOR THE ERECTION OF AN ADDITIONAL STOREY ON BLOCKS B, C & E TO PROVIDE TWELVE ADDITIONAL RESIDENTIAL FLATS; AND
- B) THE FAILURE OF THE LONDON BOROUGH OF CAMDEN TO DETERMINE WITHIN THE STATUTORY PERIOD AN APPLICATION FOR THE ERECTION OF AN ADDITIONAL FLOOR ON BLOCKS B & C TO PROVIDE EIGHT TWO-BEDROOM FLATS

AT

**DARWIN COURT**

**2-24 GLOUCESTER AVENUE, LONDON NW1**

**EXHIBIT 1**

**JULY 1996**





Existing view of Block B from the West

Photograph 1.1





View of Block B from the West with roof extension superimposed

Photograph 1.2





Existing view of Block B from the South

Photograph 1.3





View of Block B from the South with roof extension superimposed





Existing view of Block C from the West





View of Block C from the West with roof extension superimposed





Existing view of Block C from the South





View of Block C from the South with roof extension superimposed





Existing view of Block E from the West

Photograph 1.9





View of Block E from the West with roof extension superimposed

Photograph 1.10





Existing view of Block E from the South

Photograph 1.11





View of Block E from the South with roof extension superimposed





View of Block E from the South with roof extension superimposed

Photograph 1.12 (Revision A)





Existing view of Development from the South East





View of the Development from the South East with roof extension superimposed

Photograph 1.14

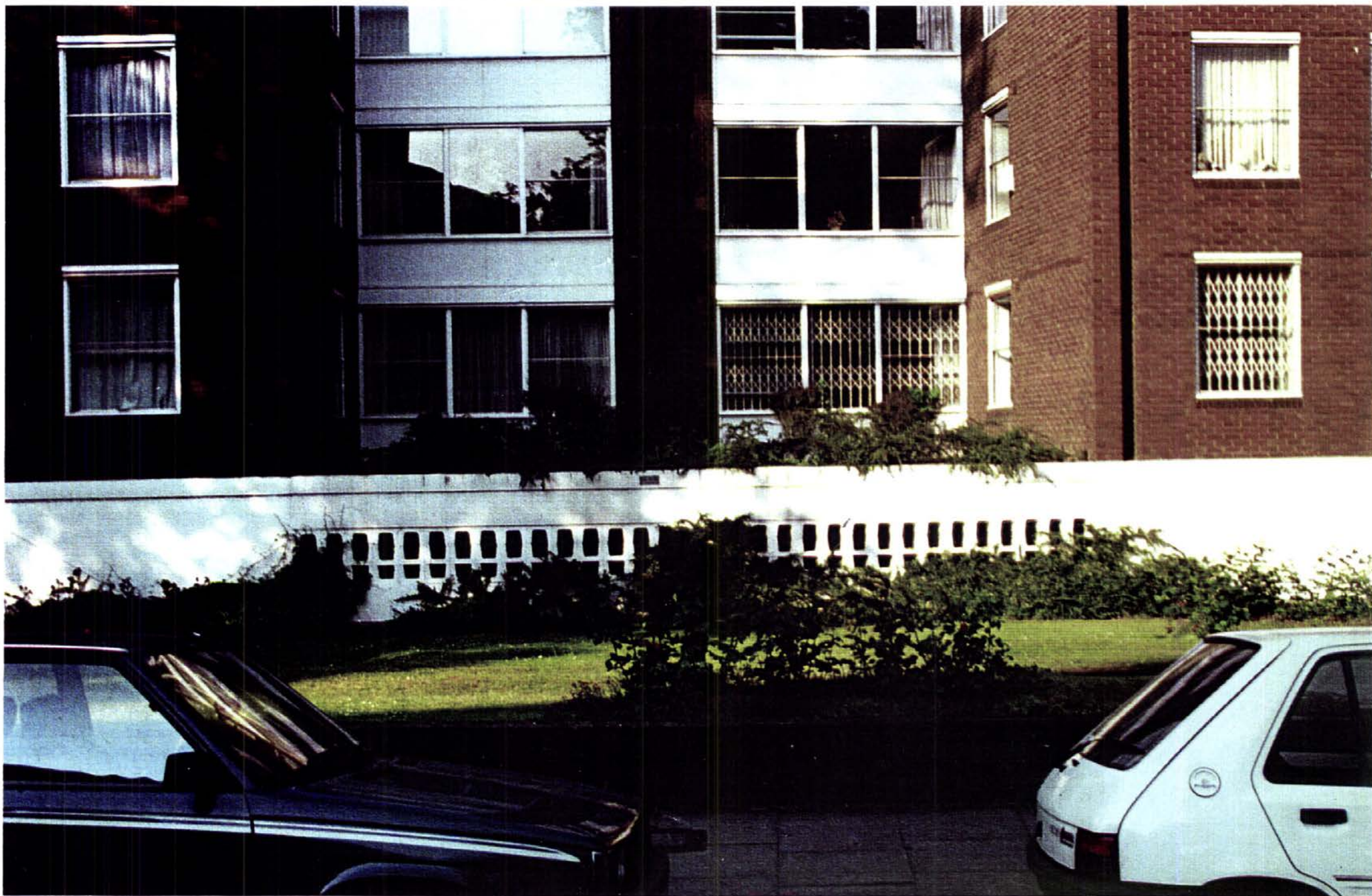




View of Existing Mansard Roof extensions on Gloucester Avenue opposite Block E

Photograph 1.15





View of external wall to semi-basement car park facing Gloucester Terrace





View of existing flat roofs to Blocks B and C

Photograph 1.17





View of existing flat roof to Block E





Existing Winter View of Blocks B and C from the South

Photograph 1-19<sup>20</sup> winter





Winter View of Blocks B and C from the South with roof extension superimposed