

Kentish Town Church of England Primary School



PV Installation
Design & Access Statement

November 2019

Contents	Page	Contents	Page
Introduction	3	The existing roofs	7
Existing building/ context	4	Solar panels	8
Conservation area	5	Planning drawings	9 - 19

Introduction

This Design and Access Statement has been prepared in support of the planning application for the installation of photo-voltaic solar panels on the existing roofs of Kentish Town Primary School. The installation will provide more than half the electrical energy for the school.

This installation is part of an overall process the school is embarking on to become zero carbon by 2030. They want to use this process of decarbonisation to help children at the school understand more about energy and the environment.

The school is teaming up with Power Up North London to deliver this project.

Headteacher James Humphries explains why this PV installation is so important for the school:

‘The installation of solar panels at Kentish Town Church of England Primary School would be beneficial in many ways:

- by reducing our carbon footprint and making us less reliant on fossil fuels*
- by reducing our electricity bills in a time of austerity*
- by harnessing the considerable support within our school community for this project (from all stakeholders)*
- by contributing to the development of our beautiful old building in its 175th year on the current site.*

Most importantly, the installation is a project which will inspire and enthuse our children about their role in protecting natural resources. I believe the project can empower our children to embrace their own sense of agency and demonstrate that they can make a difference in their community.

As a Rights Respecting school we place the United Nations Convention at the heart of what we do and the convention states:

Article 24
You have the right to the best health care possible, safe water to drink, nutritious food, a clean and safe environment, and information

Existing Building/Context

Kentish Town Primary School fronts Islip Street the centre of which forms the edge of the conservation area.

The original school building dates back to 1849.

Later extensions include the construction of a new entrance and music room to the east of the existing building more than 10 years ago. The roof is a flat felt roof with a series of rooflights.

More recently, the school has been extended to the West in 2012 with a series of new classrooms and a new playground area. The pitched roof profile to this extension forms the key East elevation to the school visible from the High Street.

The school has shown through these extensions and the condition of the school generally their commitment to a high quality built environment.




Conservation Area

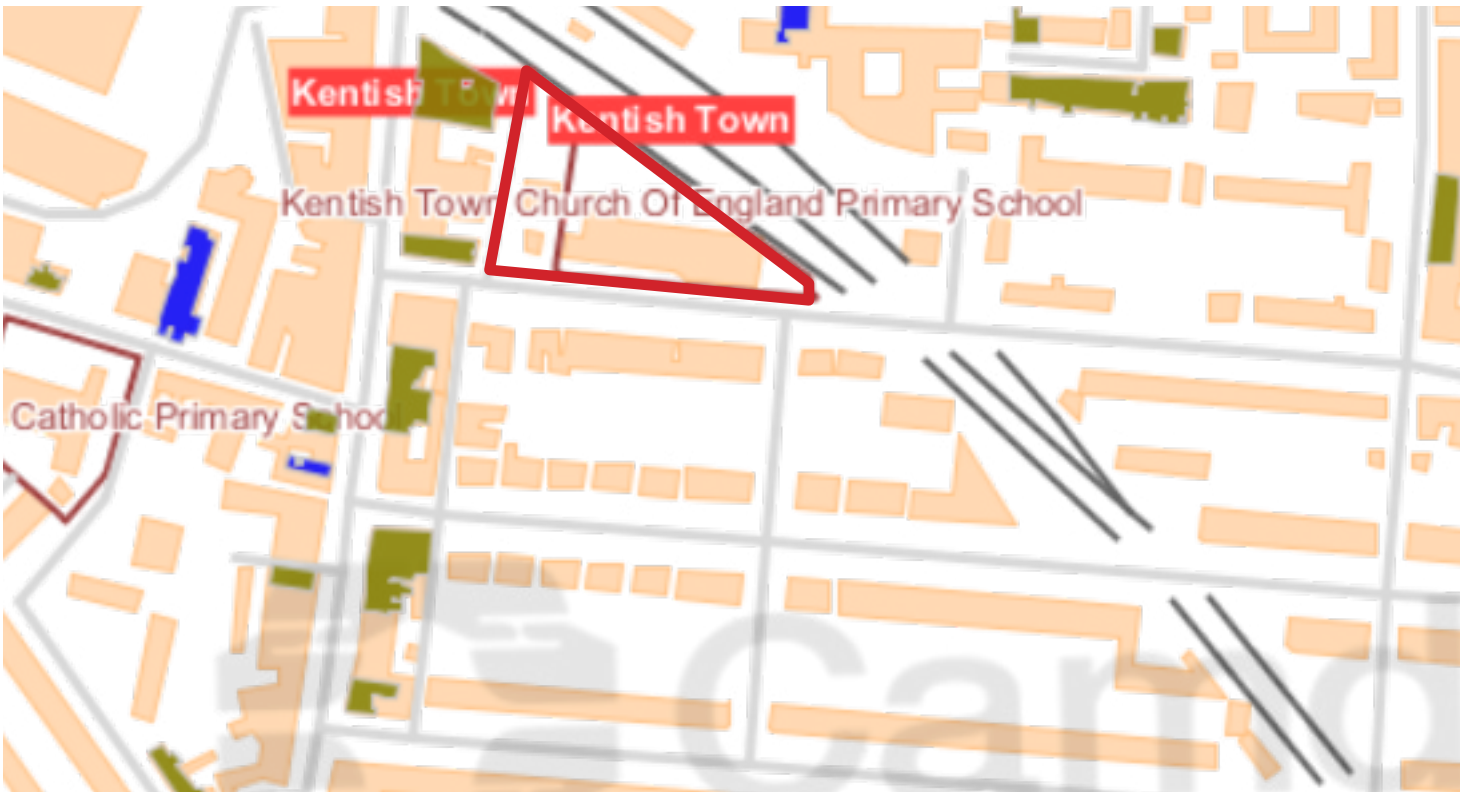
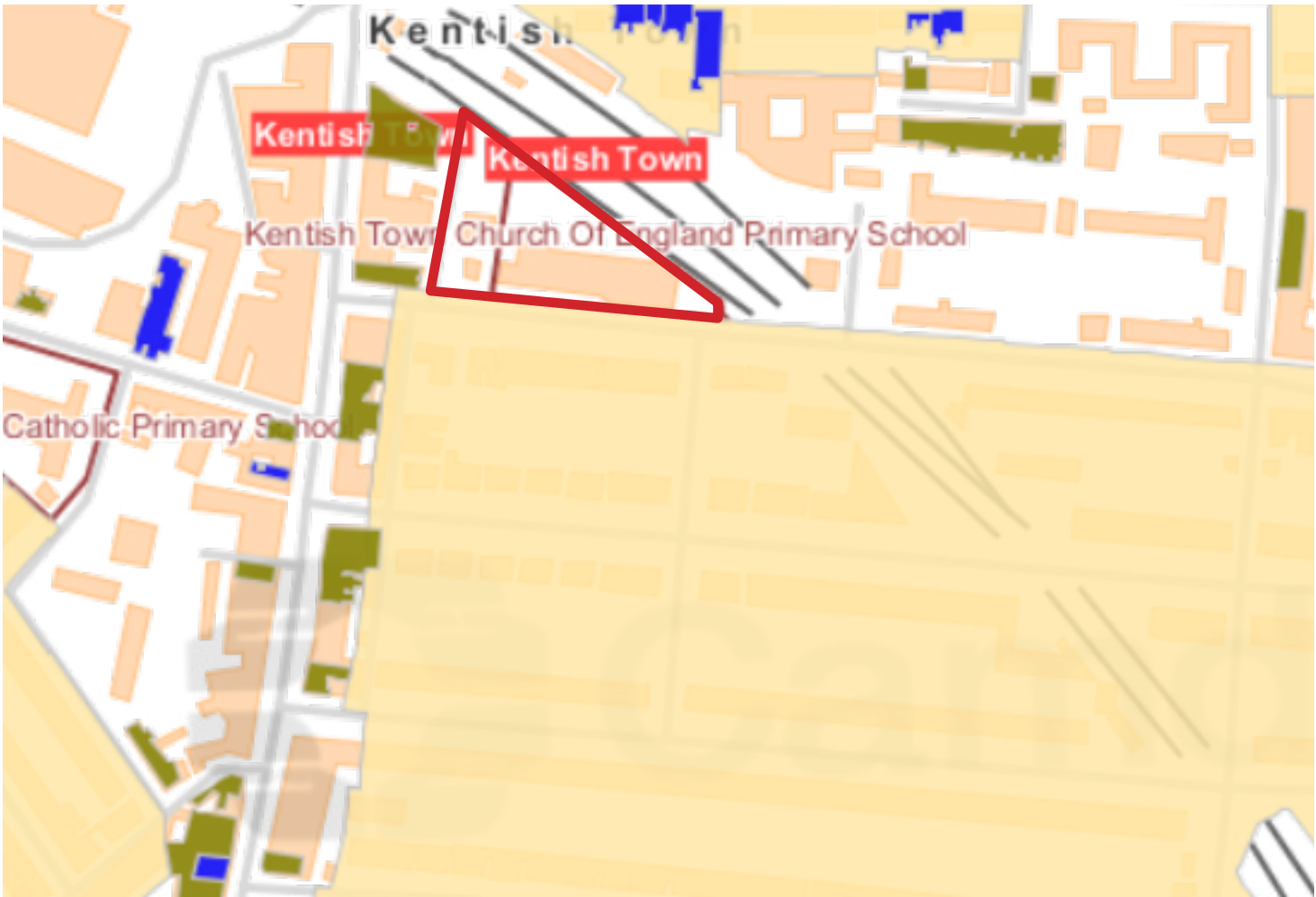
The school sits to the north of a conservation area border that extends across Islip Street.

The view of the school from this area is therefore important. Much of the school's frontage is screened by extensive planting and trees.

The roofs that will be visible to Islip Street are roofs 2 and 3 identified on the planning drawings. Roof 4 would also be visible obliquely from Islip Street.

We are suggesting the use of panels with black frames, which will match the existing dark grey roof tiles.

-  Site
-  Conservation Area





View across Islip Street opposite the school



View of the West extension from Islip Street



View of the existing school hall from Islip Street



The pitched West elevation



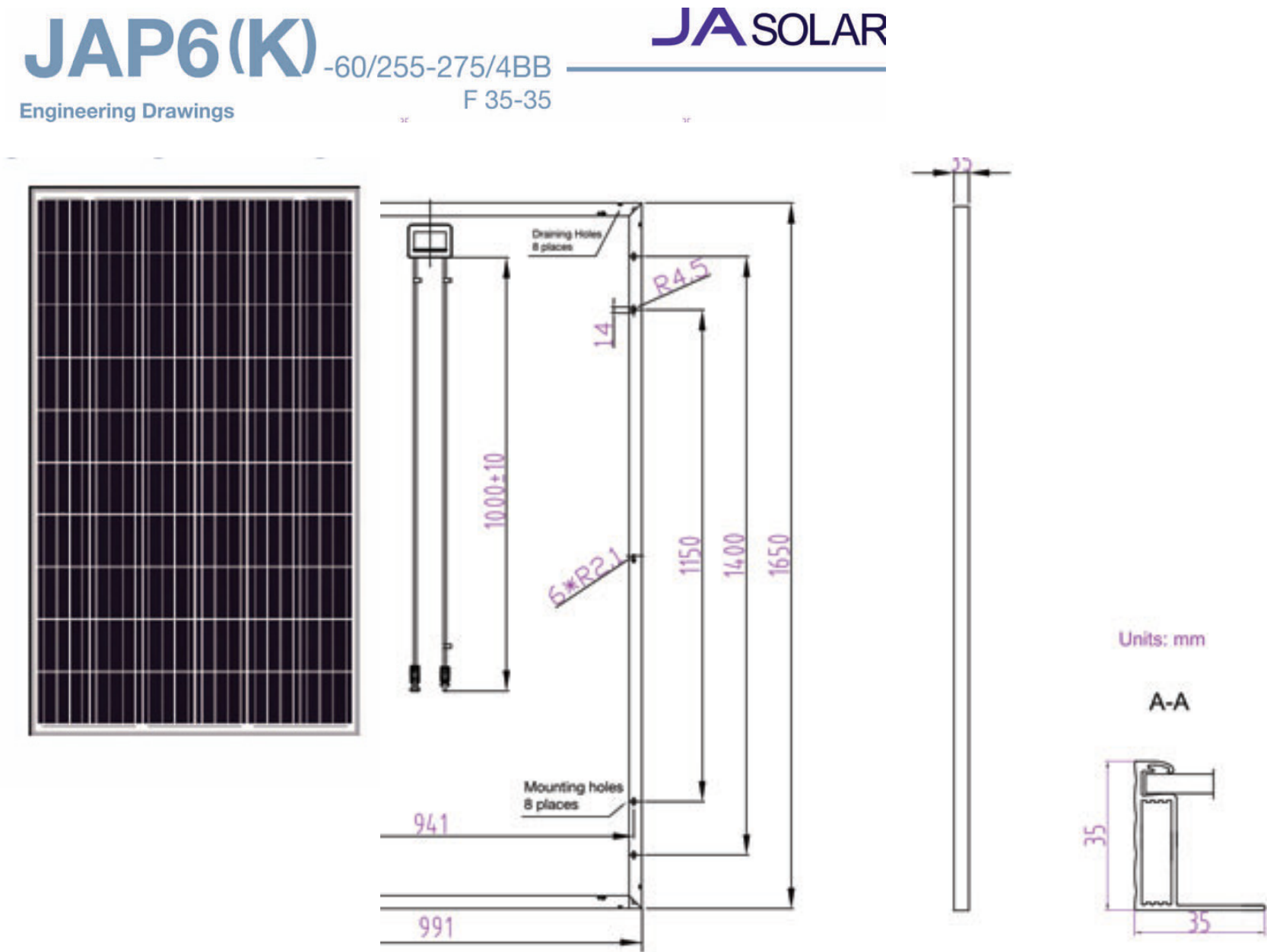
The Existing Roofs

The school has numerous roofs, many of which are orientated due south onto Islip Street. We have selected the roofs that have least obstructions and potential shade for the panels. Refer to the planning drawings below for more details of the proposed panel layout.

Solar Panels

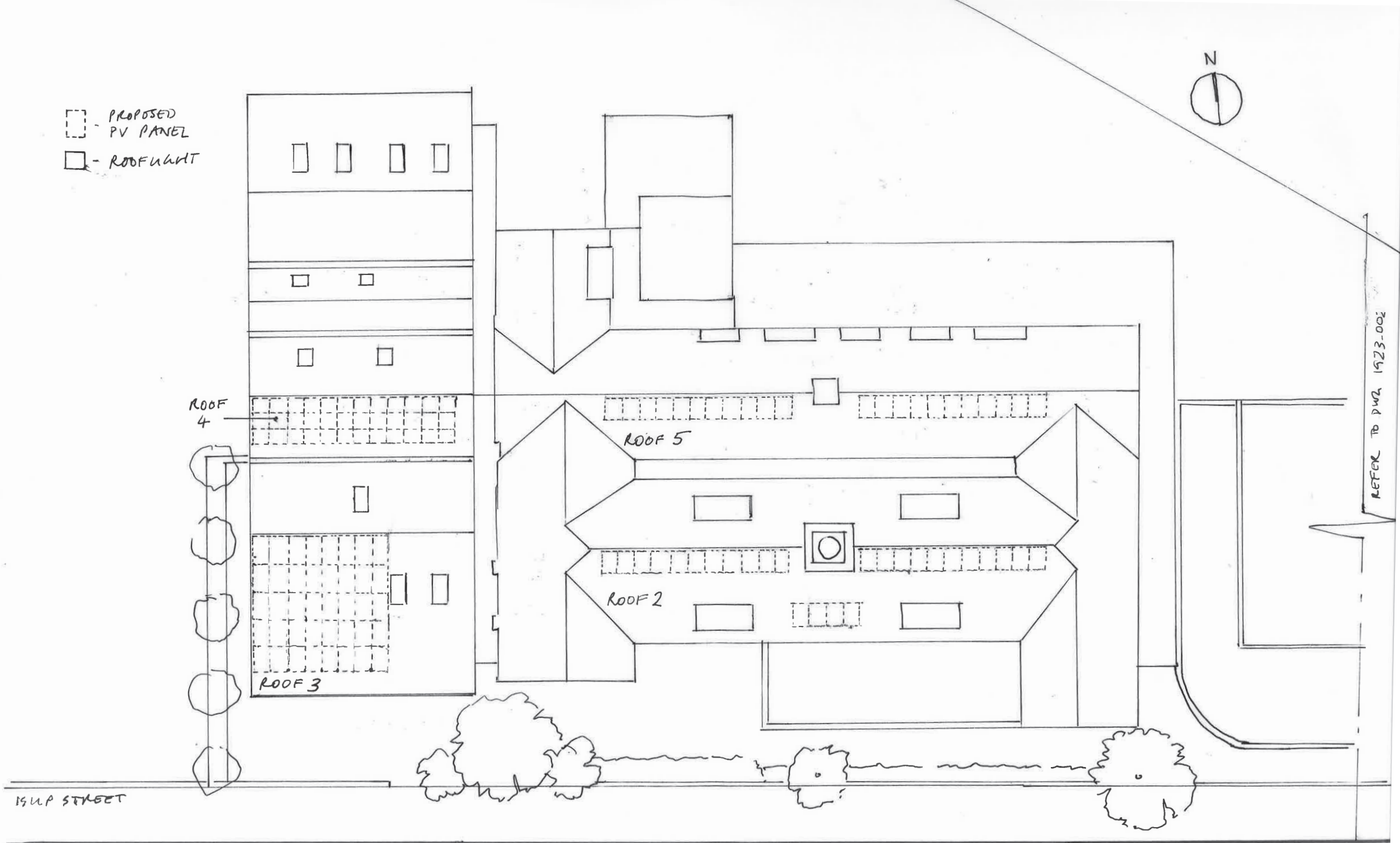
The panels proposed to be used at Kentish Town Primary School are to be JAP6(K) panels supplied by JA Solar, or similar. Please refer to appendix for technical details. These have recently been installed at Eleanor Palmer Primary School in Kentish Town.

The panels are 991 x 1650mm and are 35mm thick. They will be installed to purpose-made aluminium rails, which are fixed to the structure of the roof. They will lie close to the roof, following the existing profile.



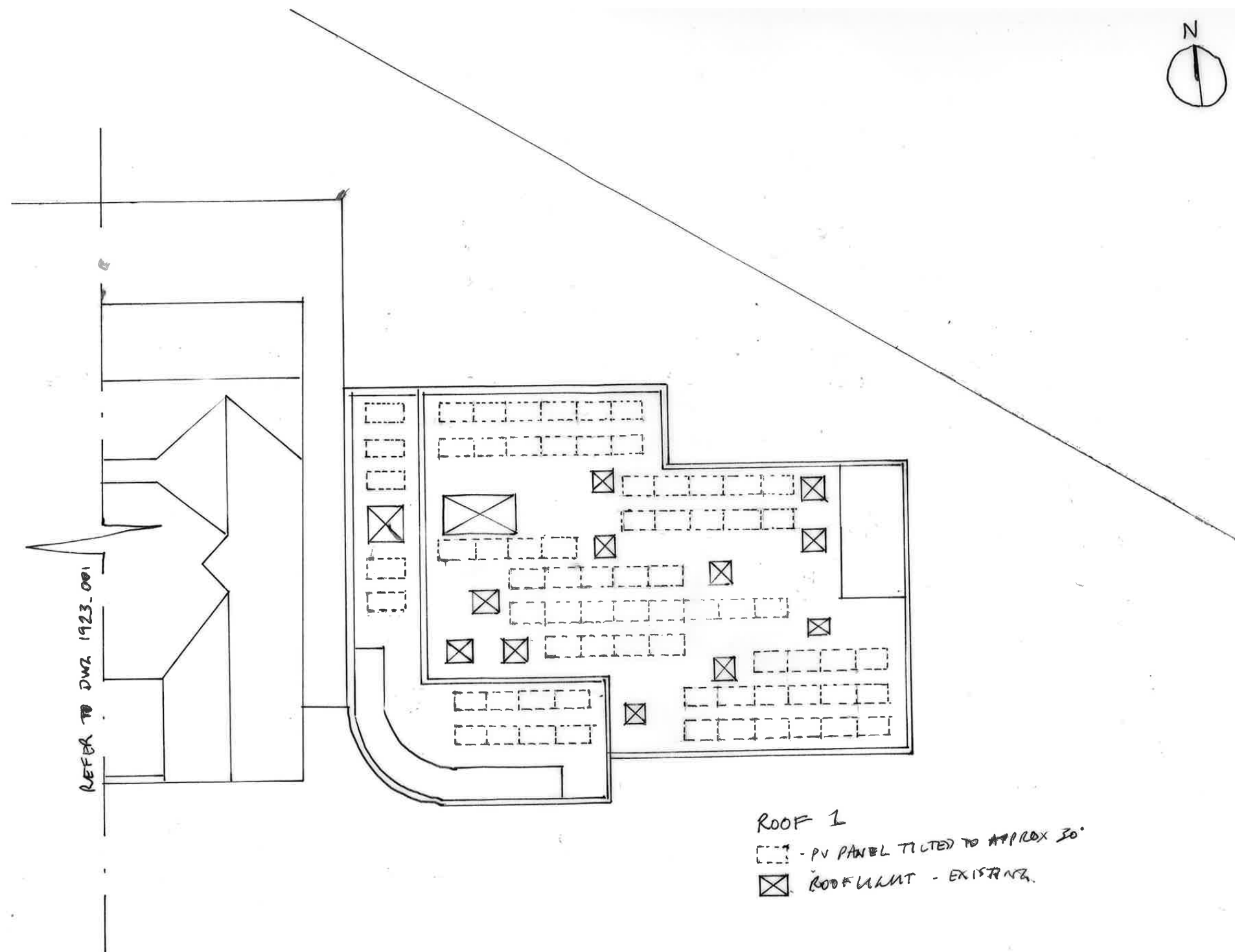
The Planning Drawings

The following pges include the planning drawings that describe the proposed installation.



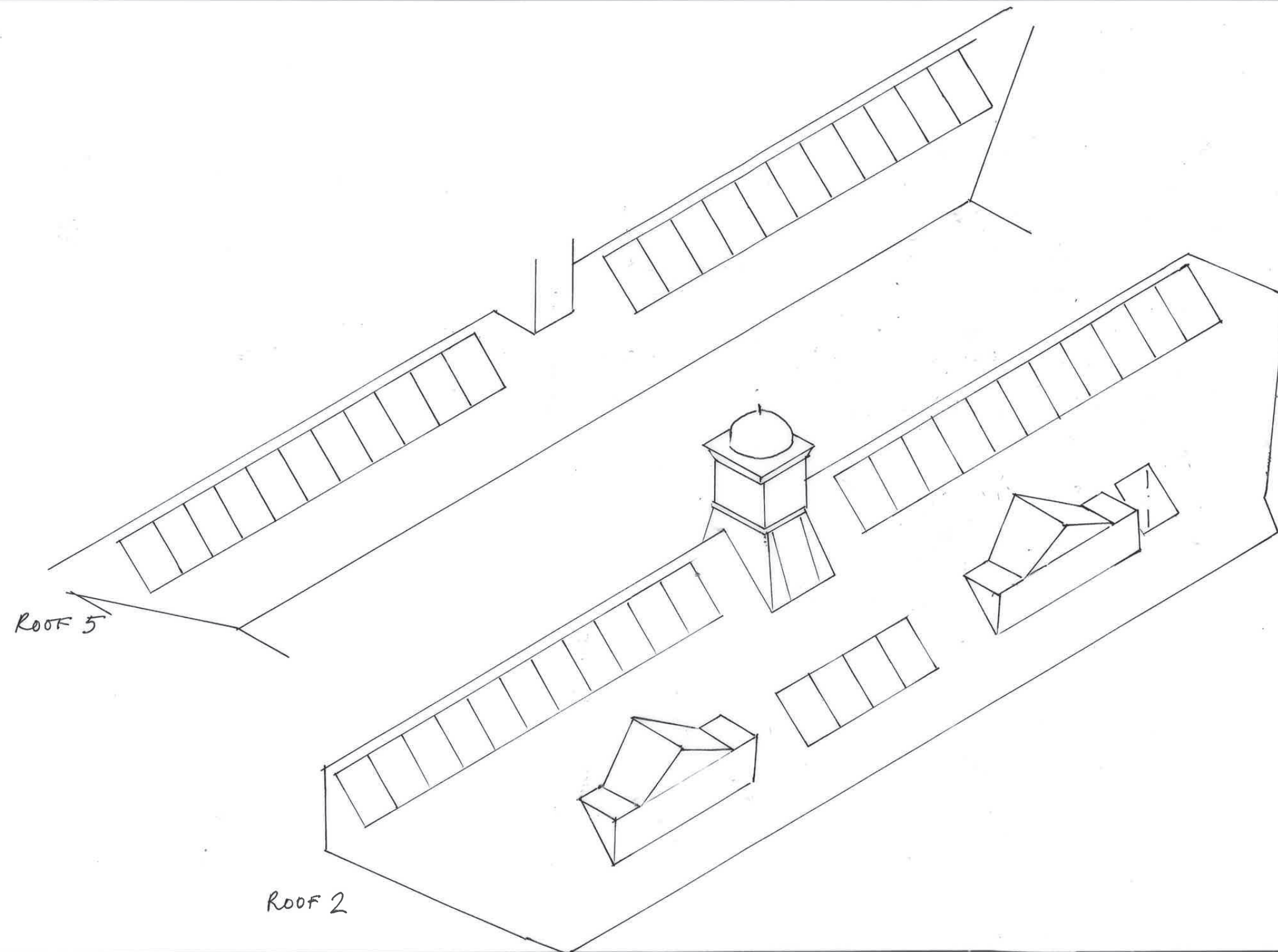
KENTISH TOWN PRIMARY SCHOOL
PV INSTALLATION
PO ISSUED FOR PLANNING 29.11.19.

LTS ARCHITECTS
ROOF PLAN 1 of 2
1923-001 PO
SCALE 1:200



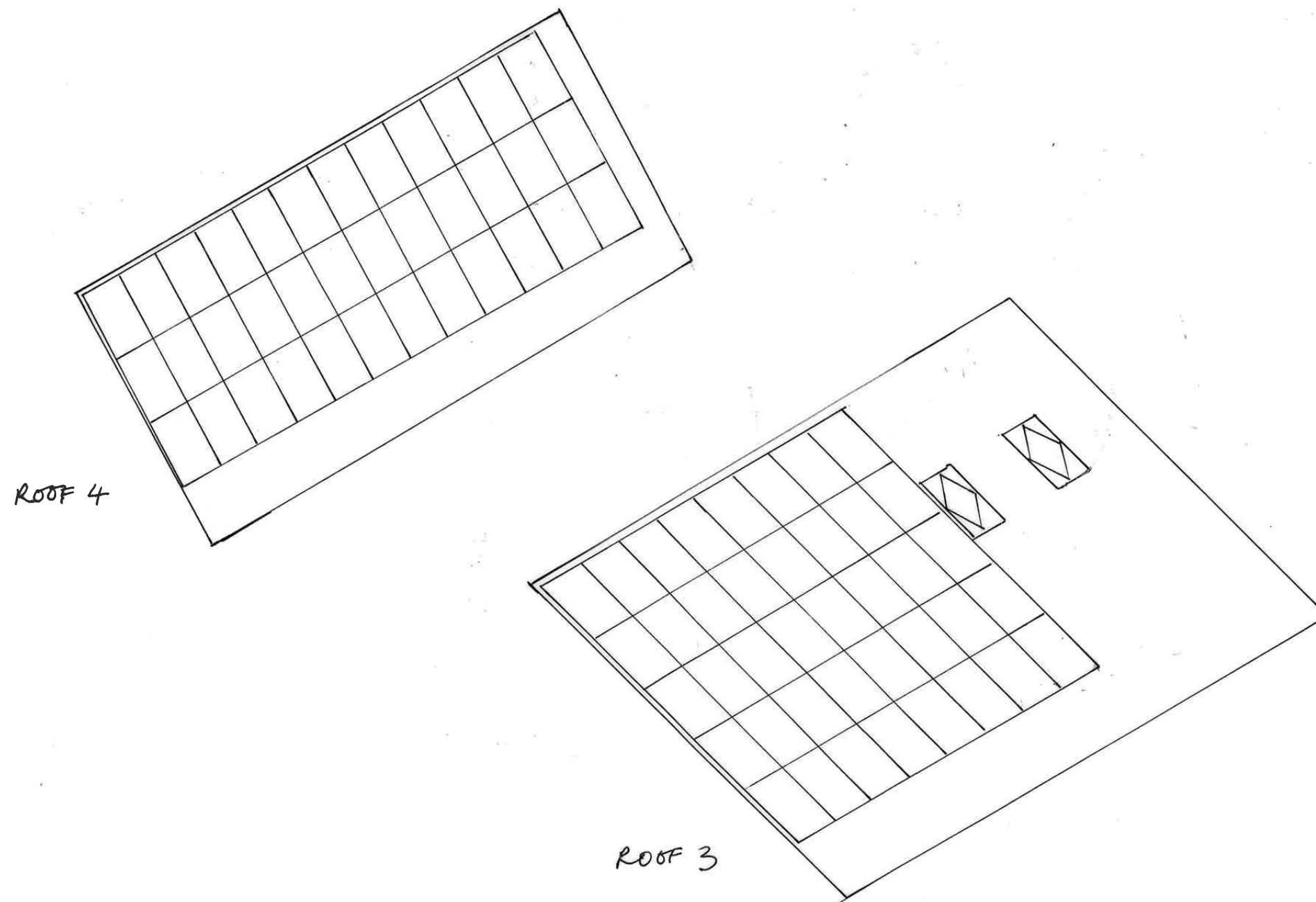
KENTISH TOWN PRIMARY SCHOOL
PV INSTALLATION.
- PO ISSUED FOR PLANNING. 29.11.19.

LTS ARCHITECTS.
ROOF PLAN 2 of 2
1923-002 PO
SCALE 1:200



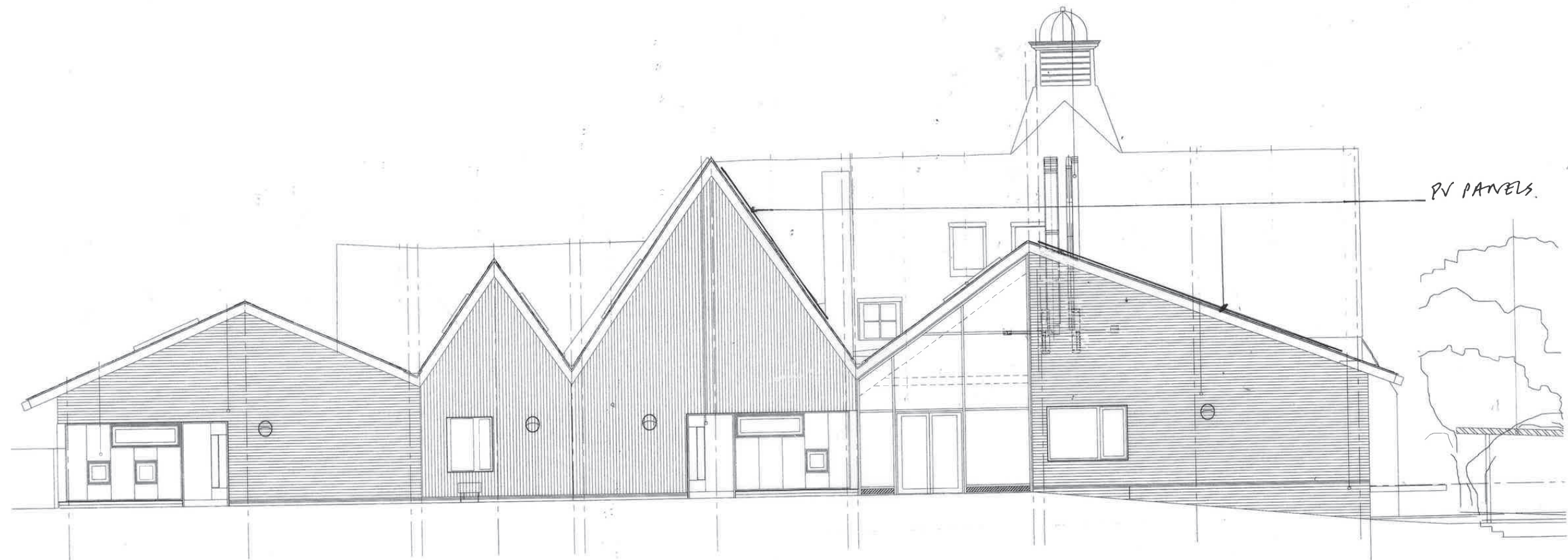
KENTISH TOWN PRIMARY SCHOOL
PV INSTALLATION
PO ISSUED FOR PLANNING. 29.11.19

LTS ARCHITECTS
ROOFS 2 & 5 VIEW
1923_003 PO
SCALE 1:100



KENTISH TOWN PRIMARY SCHOOL
PV INSTALLATION
PO ISSUED FOR PLANNING. 29.11.19

LTS ARCHITECTS
ROOFS 3 & 4 VIEW
1923_004 PO
SCALE 1:100



BASED ON BACKGROUND
ELEVATION BY
HARTWELL ASSOCIATES

KENTISH TOWN PRIMARY SCHOOL
PV INSTALLATION
PO ISSUED FOR PLANNING 29.11.19

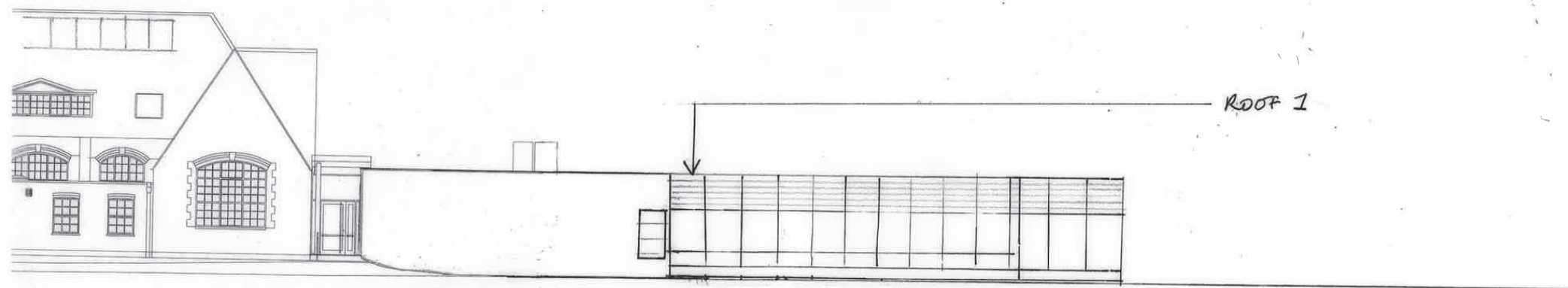
LTS ARCHITECTS
ELEVATION FRIDESWIDE PLACE
1923_005 PO
SCALE 1:100



BASED ON BACKGROUND
ELEVATION BY
HAVERSTOCK ASSOCIATES

KENTISH TOWN PRIMARY SCHOOL
PV INSTALLATION
PO ISSUED FOR PLANNING. 29.11.19

LTS ARCHITECTS
ISUP ELEVATION 1 of 2
1923-006 PO
SCALE 1:200

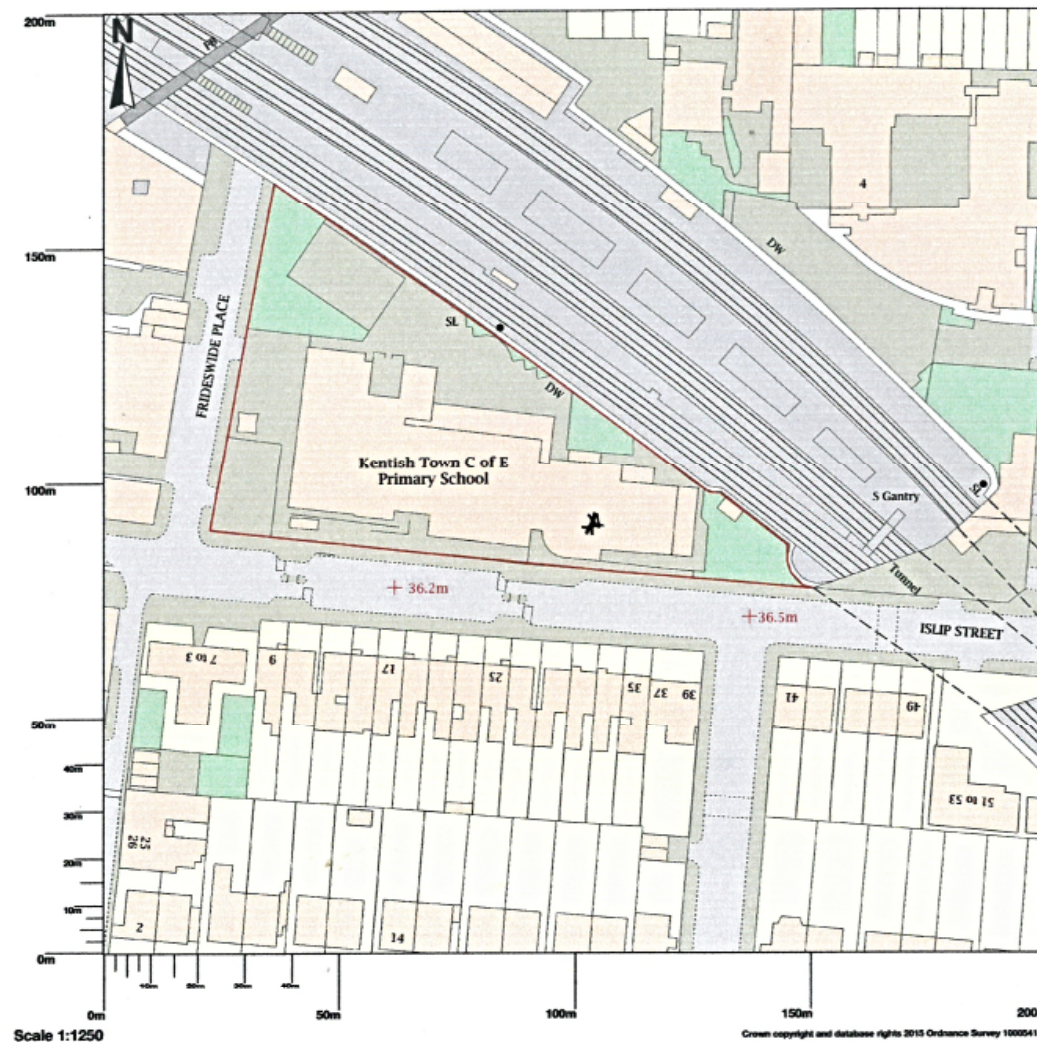


BASED ON BACKGROUND
ELEVATION BY
HAVERSTOCK ASSOCIATES

KENTISH TOWN PRIMARY SCHOOL
PV INSTALLATION
PO ISSUED FOR PLANNING, 29.11.29.

LTS ARCHITECTS
KUPST ELEVATION 2 of 2
1923_007 PO
SCALE 1:200

Kentish Town Primary School, Islip Street, London, NW5 2TU

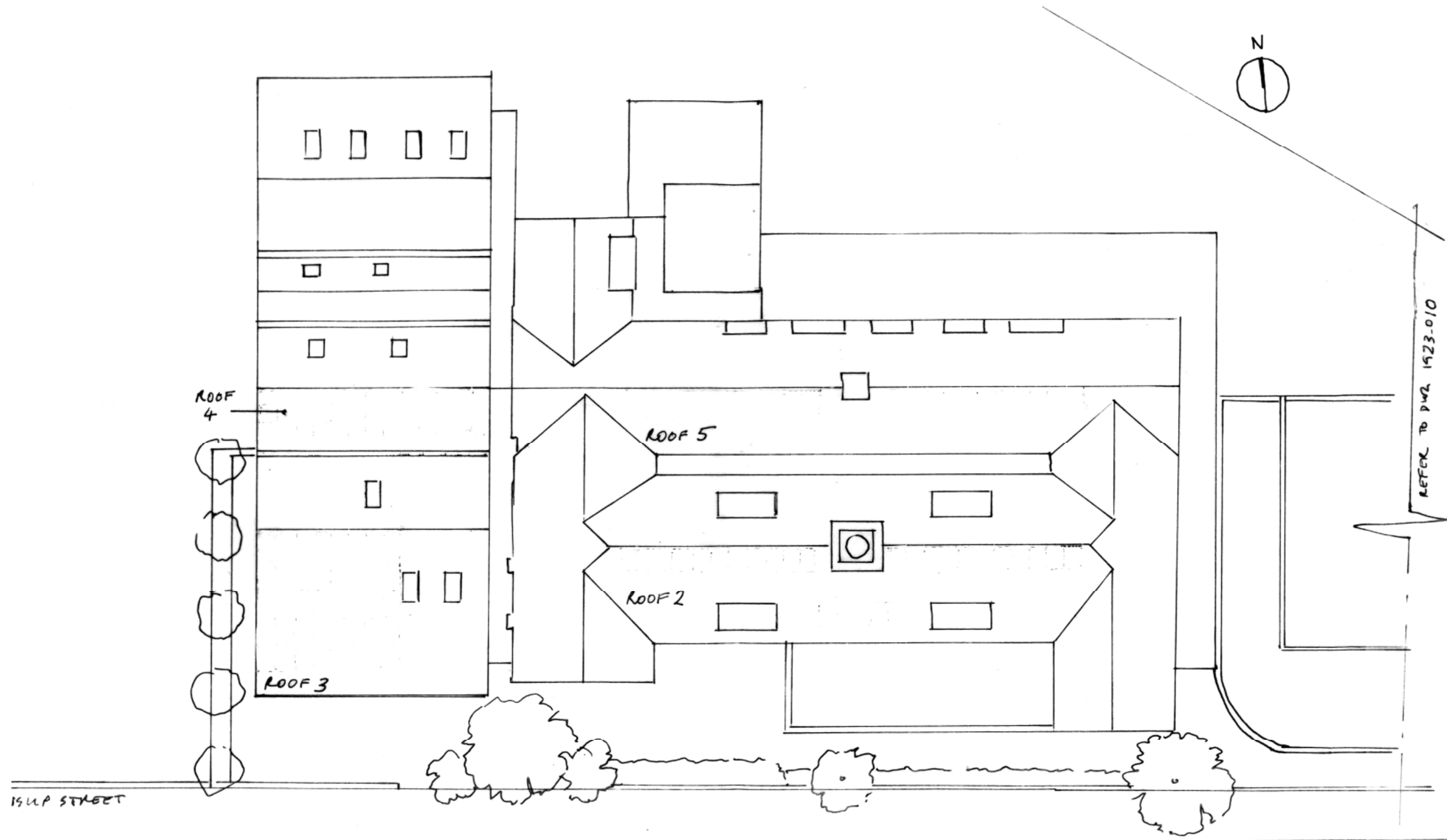


Map area bounded by: 529029,184970 529229,185170. Produced on 05 November 2019 from the OS National Geographic Database. Reproduction in whole or part is prohibited without the prior permission of Ordnance Survey. © Crown copyright 2019. Supplied by OSPlanningMaps.com a licensed OS partner (100054135). Unique plan reference: p4bos/401670/544860

* SITE INDICATED WITH
RED BOUNDARY

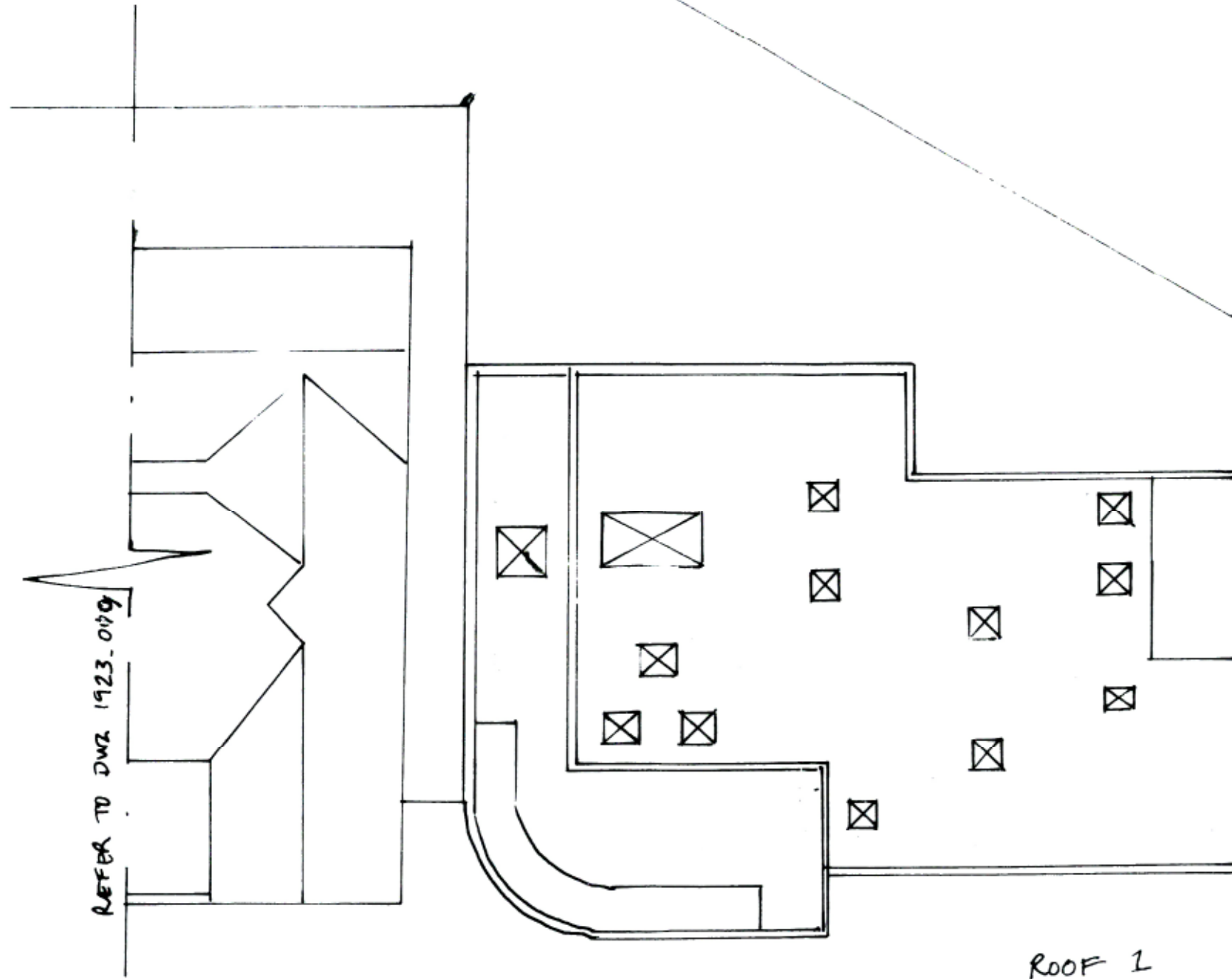
KENTISH TOWN PRIMARY SCHOOL
PV INSTALLATION
PO ISSUED FOR PLANNING 29.11.19

LTS ARCHITECTS
LOCATION PLAN
1923_008 PO
SCALE 1:1250



KENTISH TOWN PRIMARY SCHOOL
PV INSTALLATION
PO ISSUED FOR PLANNING 29.11.19.

LTS ARCHITECTS
EXISTING ROOF PATTERN 1 of 2
1923_009 PO
SCALE 1:250



Roof 1