

## 234 Shaftesbury Avenue - Photographic Schedule, Rev A – November 2019

Pre –existing condition



Fig 1 View looking into the shop unit from adjacent to the shopfront.



Fig 2 View looking towards the shopfront.

Fig 3 View of the southern party wall.

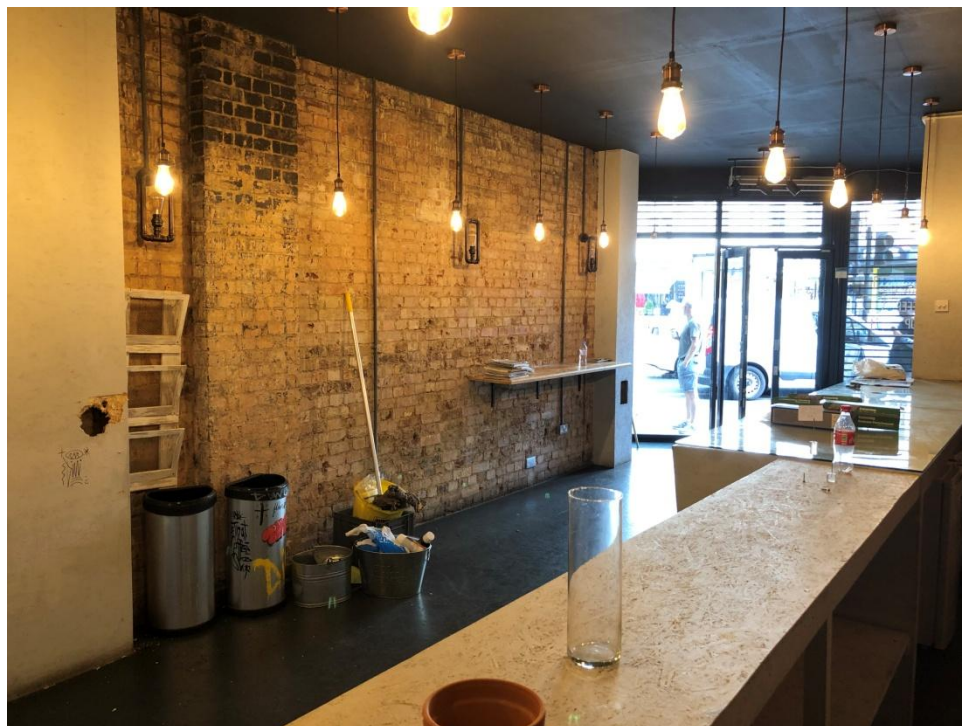
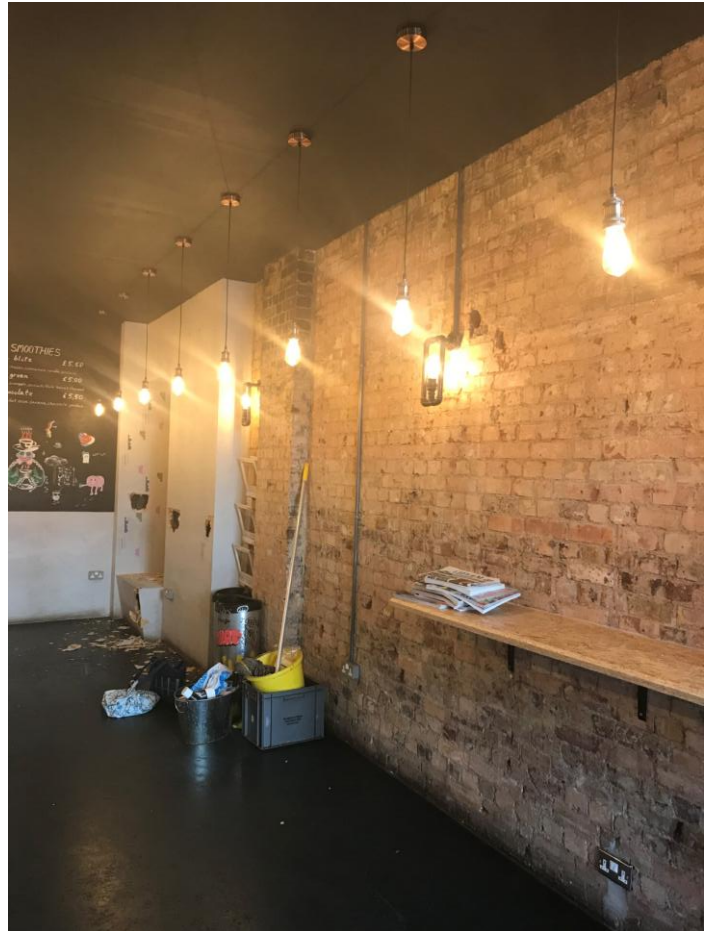


Fig 4 View of the southern party wall showing pre-existing lighting.





Fig 5 Modern sterling board boxing around existing pipework and cabling.



Fig 6 The pre-existing fascia and roller shutter.



Fig 7 The pre existing front elevation of the listed building.



As built condition



Fig 8 The modified Sterling board cladding adjacent to the entrance into the retail unit.

Fig 9 The modified and re-painted Sterling board on the opposite side of the entrance.





Fig 10 The AC cassette and extractor fan at high level behind the shopfront.



Fig 11 The tiled finish to the floor.



Fig 12 Installed televisions to the modern ceiling.



Fig 13 Extractor fan fitted at high level to the rear prep area/store room.



Fig 14 Modern partitions to form new WC at rear of retail unit.



Fig 15 Extractor fan fitted at high level to new WC area.





Fig 16 Mirror film applied to the modern Sterling board covered walls.



Fig 17 New partitions at rear of the retail unit.



Fig 18 The installed acrylic fascia sign.

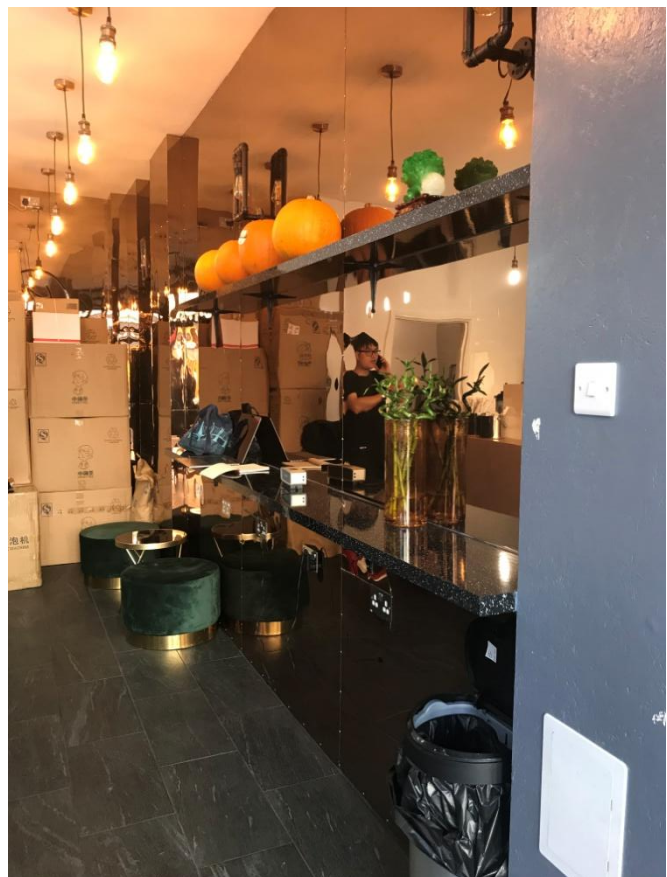


Fig 19 The southern internal party wall of the retail unit.





Fig 20 The 'as built' frontage to the retail unit.



Fig 21 The installed fascia sign.