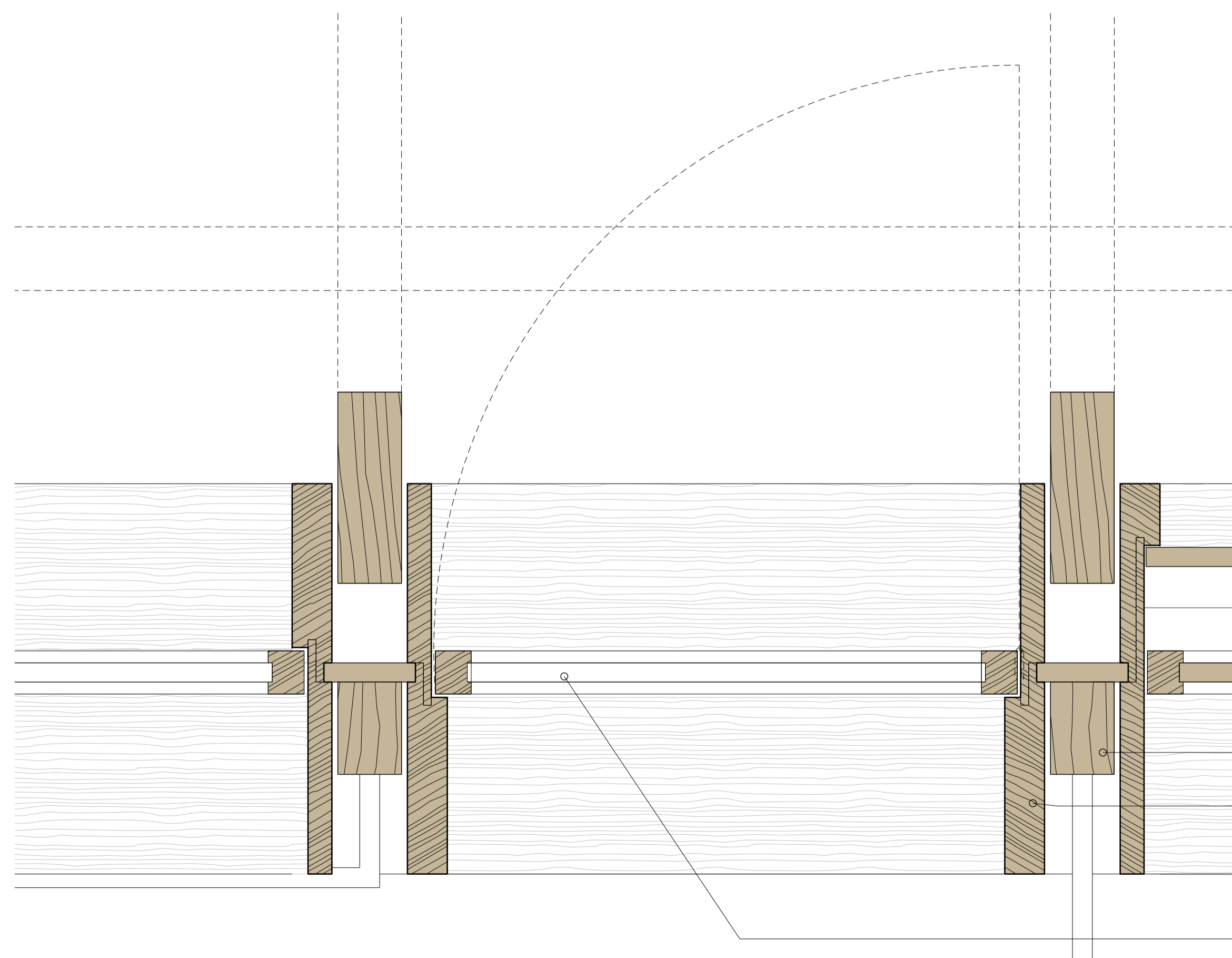


New timber framed single-glazed inward opening door with toughened glass

01 Proposed Detailed Elevation - showing First Floor door
7D(PL)27 7 Denmark Street - Mews

1:20



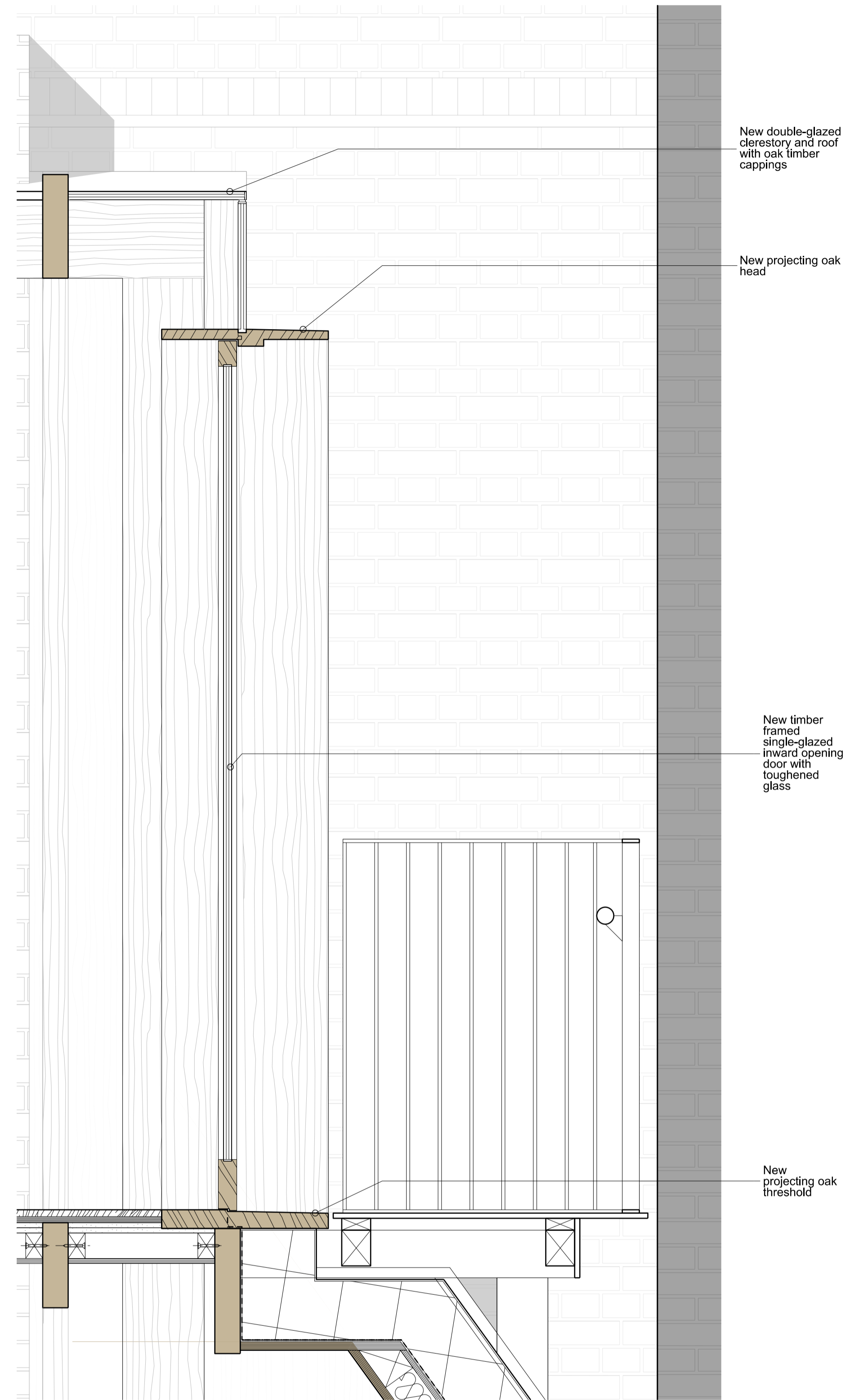
New oak fixed frame and capping

New projecting oak head

New timber framed single-glazed inward opening door with toughened glass

03 Proposed Detailed plan showing door
7D(PL)27 7 Denmark Street - Mews

1:5



New double-glazed clerestory and roof with oak timber cappings

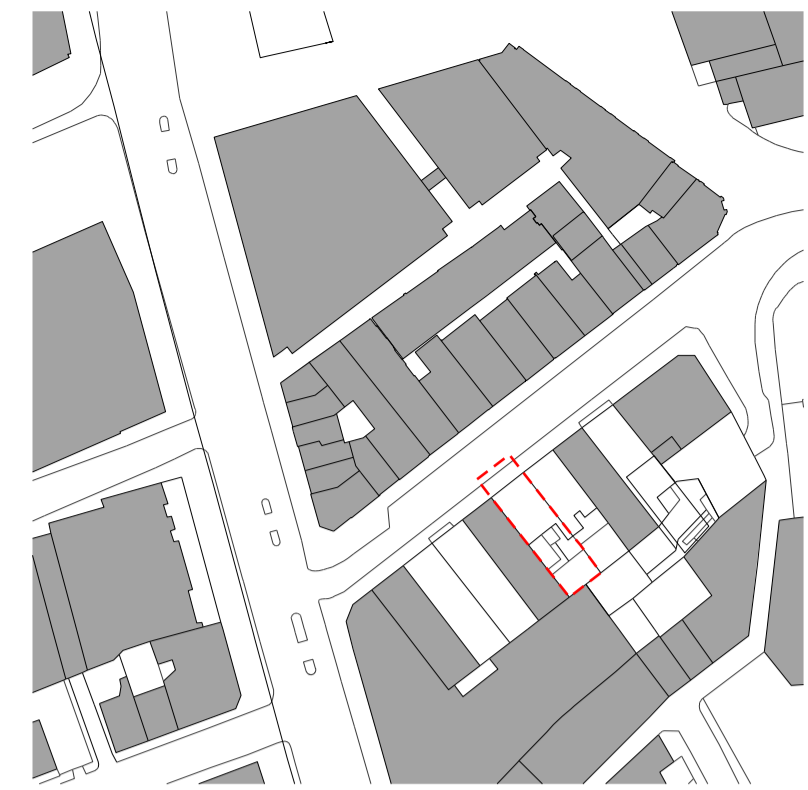
New projecting oak head

New timber framed single-glazed inward opening door with toughened glass

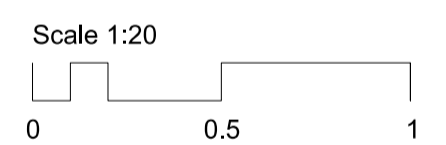
New projecting oak threshold

02 Proposed Detailed Section - showing typical window
7D(PL)27 7 Denmark Street - Mews

1:10



- External works. General notes:
- All external facades to be restored and cleaned generally
 - Unsympathetic modern materials and security measures to be removed
 - All exterior brickwork to be carefully cleaned, repaired and repointed where necessary in matching materials



Revisions			
01	18/11/19	First Issue - Discharge of Conditions	
Client			
Consolidated Ltd.			
Project			
St. Giles Circus - Zone 3			
Drawing Title			
7 Denmark Street - Mews extension Typical First Floor door detail			
Drawing Number			
1401_7D(PL)27			
Scale	Varies @ A1	Status	For Planning
Drawn by	EW	Date	20/08/19
Do not scale. All dimensions to be confirmed on site. Information contained in this drawing is the sole copyright of Ian Chalk Architects and is not to be reproduced without permission.			
All internal layouts are for illustrative purposes only			
		70 Cowcross Street London EC1M 6EJ 02037807355 07785 973723 ianchalkarchitects.com	