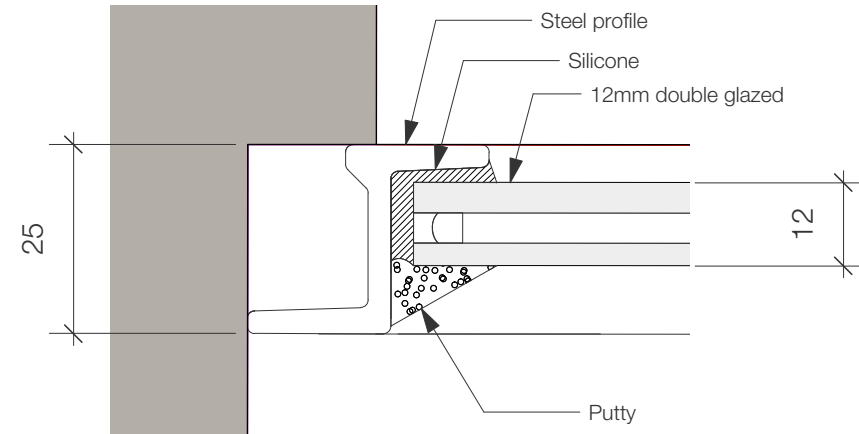
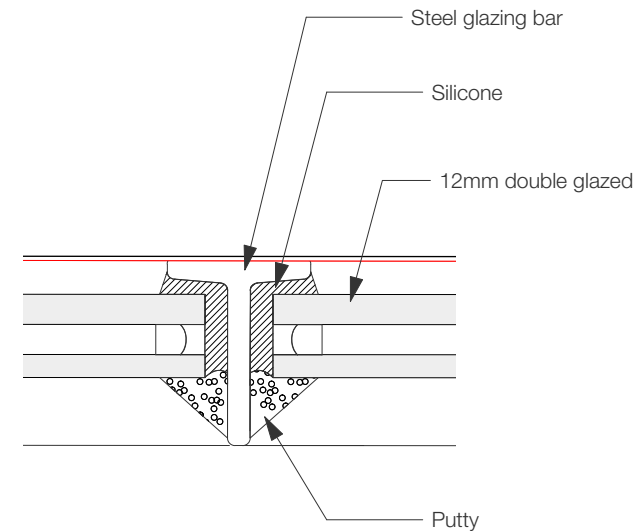


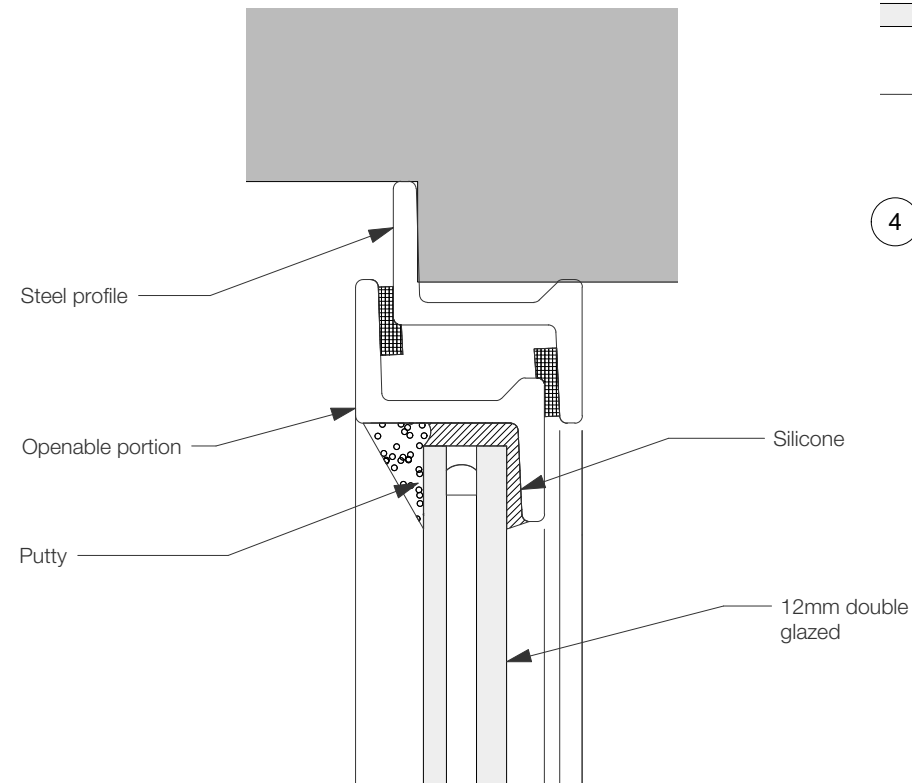
1 Section - Window  
Scale: 1:10



2 Jamb Detail  
Scale: 1:1



4 Glazing Bar Detail  
Scale: 1:1

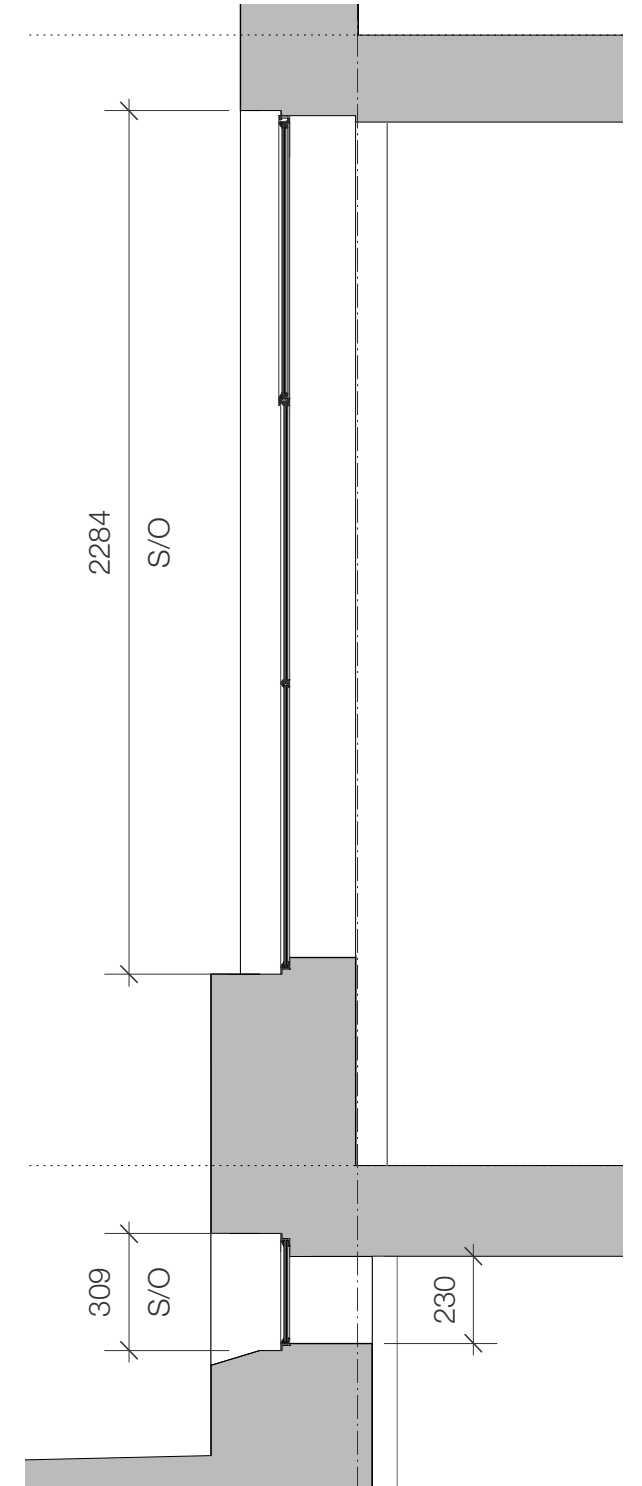


3 Head Detail  
Scale: 1:1

All dimensions need to be checked and confirmed on site

#### Typical Crittal Window:

- steel window to have double glazing
- window frame to be powder coated, colour in anthracite



5 Section - Window  
Scale: 1:20



6 Key Plan  
Scale: 1:100

**Chassay Studio**

108 Palace Gardens Terrace, London W8 4RT t. 0207 243 1516  
www.chassaystudio.com

#### General Notes

- 1) Do not scale from this drawing.
- 2) Written dimensions only to be used.
- 3) All dimensions are in millimetres.
- 4) These drawings shall be read in conjunction with all other relevant drawings, written instructions and specifications.
- 5) Any discrepancies or inconsistencies must be reported to the architect immediately.

© CHASSAY STUDIO Ltd 2017

| Rev | By | Description of Change                   | Date     | Checked |
|-----|----|---|----------|---------|
| -   | WT | Issued for planning condition discharge | 06.09.19 | TC      |

**Hanway House**  
London W1T 1UH

#### Title

TYPICAL WINDOW - PAGE 2

Job Code Drawing No. Revision

**1661 -E-19**

Date  
31.10.2018

status : FOR

INFORMATION

Scale

1:10 @ A3