

This drawing is to discharge condition 6 relating to planning consent 2014/4726/P for; 'the erection of two storey side and rear extensions following demolition of existing garage and rear extension, replacement roof, and excavation of basement.'

Condition 6: Details of the location, design and method of waste storage and removal, shall be submitted to and approved by the local planning authority in writing. The storage as approved shall be provided prior to the first occupation of the new house and permanently retained thereafter.

Reason: To ensure that sufficient provision for the storage and collection of waste has been made in accordance with the requirements of policy CS18 of the London Borough of Camden Local Development Framework Core Strategy and policies DP26, DP28 and DP12 of the London Borough of Camden Local Development Framework Development Policies.

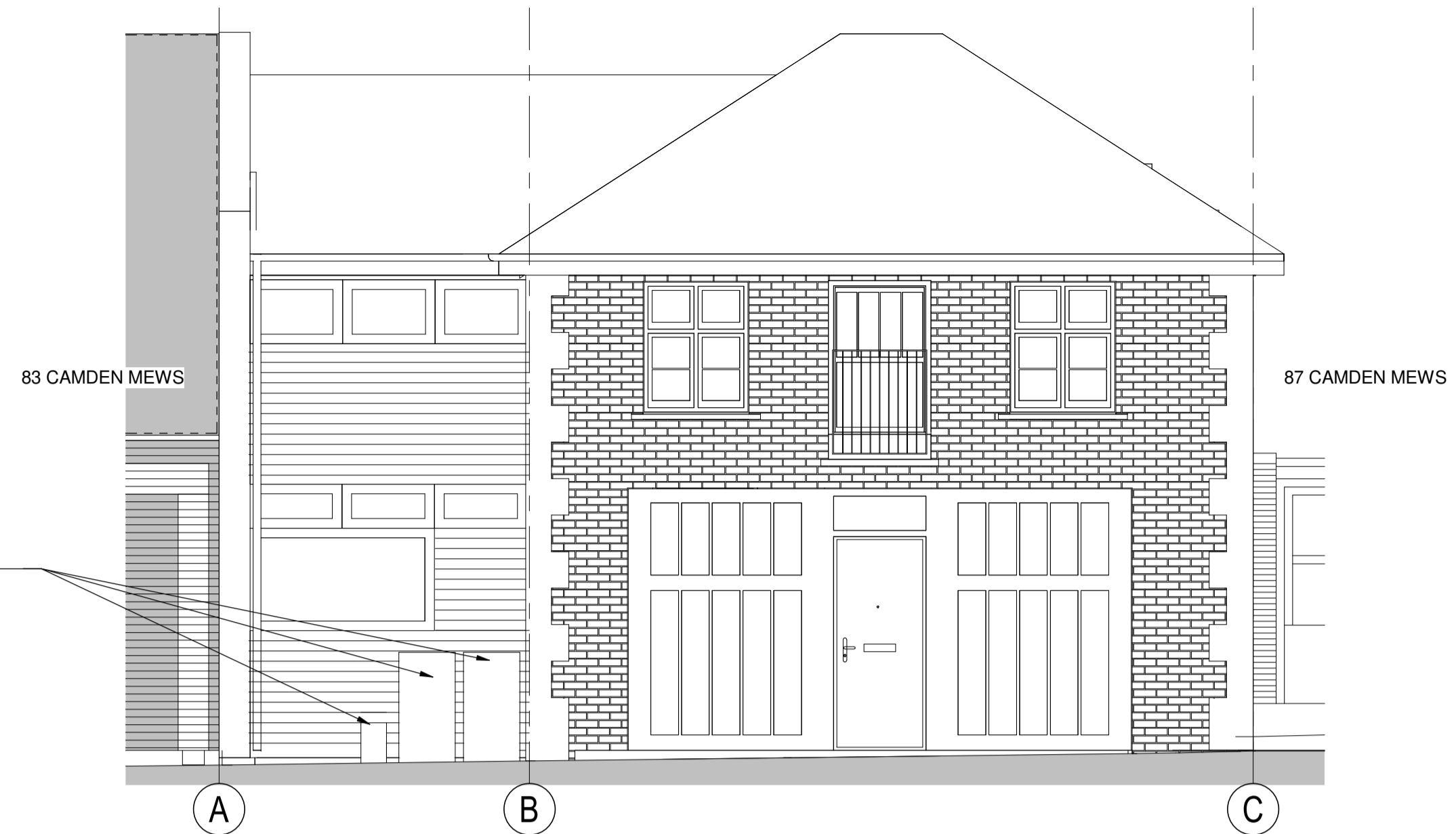
Proposal :-

We propose that all refuse is placed in bins to the street as is currently the case.

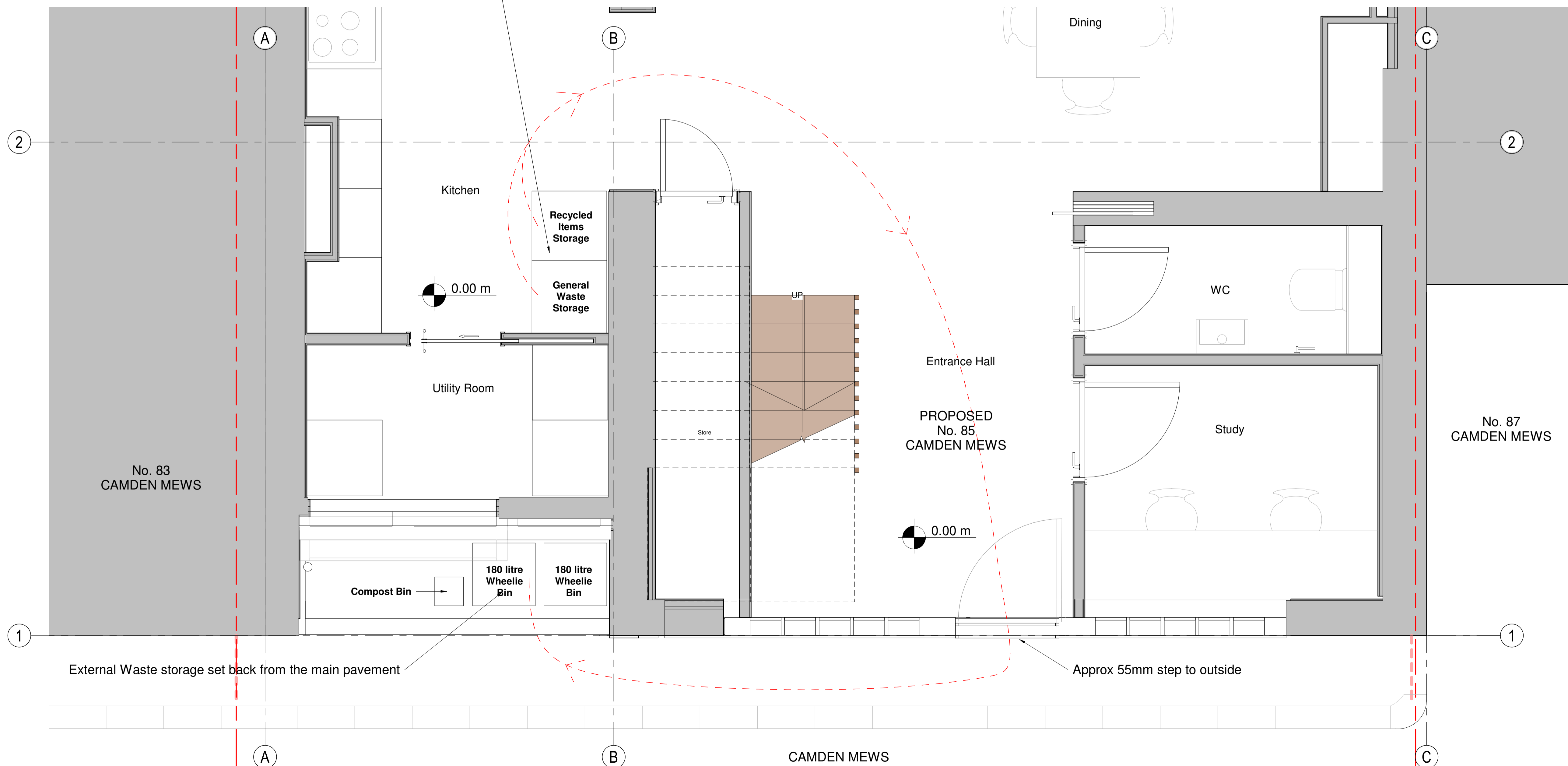
- We have allowed for the same provision as neighbouring dwelling on Camden Mews of:
 - 180 litre general waste 1064mm(height) x 543mm(width) x 543mm(depth).
 - 180 litre mixed recycling 1064mm(height) x 543mm(width) x 543mm(depth),
 - a small compost bucket.

Internal storage of general waste and recycling will be kept in the kitchen and taken out through the front door to the external storage location. Journey depicted by red dashed line.

Location of proposed external waste storage is convenient for removal.



2 PROPOSED Front Elevation - Waste Storage Location
1230 1 : 50



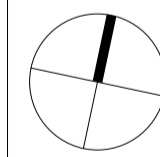
1 PROPOSED Ground Floor - Waste Storage
1230 1 : 20

| SAFETY, HEALTH AND ENVIRONMENTAL INFORMATION: | |
|---|---------------------------------|
| IN ADDITION TO THE HAZARDS/RISKS NORMALLY ASSOCIATED WITH THE TYPES OF WORK DETAILED ON THIS DRAWING, NOTE THE FOLLOWING: | |
| Significant Residual Risks: | |
| Action to be Taken: | Refer to Health and Safety Plan |

NOTES:

Only use figured dimensions from issued PDF drawings (not CAD files), where dimensions do not exist please request from architect. We are happy for you to make use of our drawings as long as the information is not used as the basis of any claim against us if there are any discrepancies between our cad files and dimensions given on the drawings or on any architectural drawing. Please note, that DWG files are created from Revit so errors may occur during reporting.

| REV | DATE | DETAIL | DRN | CHK |
|-----|----------|---|-----|-----|
| 1 | 26.11.19 | Submitted for discharge of planning condition | HD | JW |



SHEET STATUS **FOR PLANNING**

PROJECT TITLE
85 Camden Mews
CLIENT
Whitehall Park

DRAWING TITLE
Location, Design and Method of Waste Storage and Removal.

| | | |
|--------------------|-----------------------|---------------|
| DATE 26/11/19 | SCALE As indicated | ①A1 ①A3 |
| MODEL STATUS S0 | DRAWN HD | CHECKED KG |

| | |
|--|----------------------|
| DRAWING NUMBER CM-CS-ZZ-ZZ-DR-A-1230 | REVISION 1 |
|--|----------------------|

CULLINAN STUDIO
5 BALDWIN TERRACE LONDON N1 7RU TEL: 020 7704
PROJECT EMAIL: 85_camdenmews@cullinastudio.com