

Second Floor

First Floor

Upper Ground Floor

Upper Ground Floor

Lower Ground Floor

Remove existing glazed metal canopy

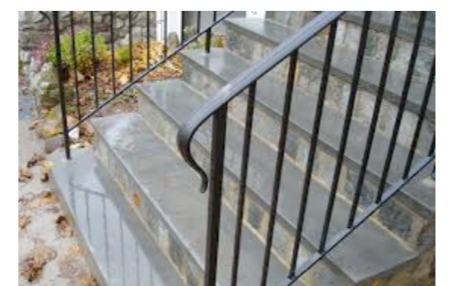
replace existing balustrade with new simple traditional metal railings

stone copings to match

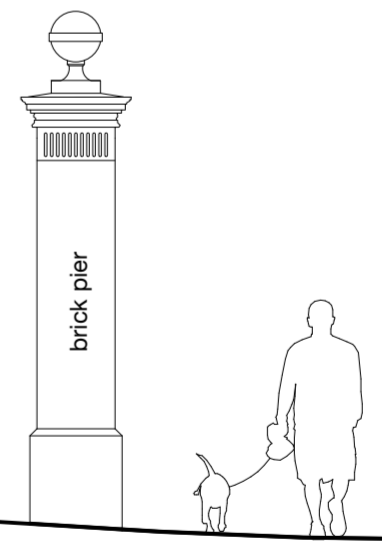
existing metal staircase and platform - painted black

lower existing brick balustrade walls and install new black-painted simple traditional metal railings - flat bar bottom bar and handrail with circular uprights in the style below:

re-face existing steps with stone with bull-nosing, rebuilding bottom steps (which are currently overly-tall) to ensure an even riser height



56.000
 55.000
 54.000
 53.000
 52.000
 51.000
 50.000
 49.000
 48.000



BROD WIGHT Architects
 8a Baynes Mews --- London --- NW3 5BH

Linton Studio, 35 Steele's Road
 London NW3 4RG

www.brodwight.co.uk office@brodwight.co.uk
 Tel 020 7722 0810 This drawing is copyright

Drawing Title:
Proposed Side Elevation

Drawing Ref:
1076-AP2-05B

Date: December 2018 Scale: 1:50@A2 / 1:100@A4

	existing walls
	existing elements to be removed
	proposed walls