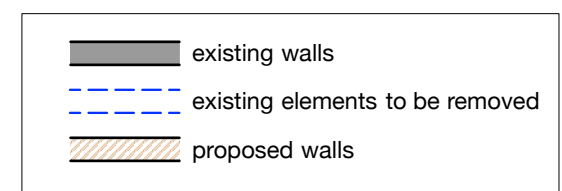


lower existing brick balustrade walls and install new black-painted simple traditional metal railings - flat bar bottom bar and handrail with circular uprights

re-face existing steps with stone with bull-nosing, rebuilding bottom steps (which are currently overly-tall) to ensure an even riser height

FRONT ELEVATION



**BROD WIGHT**  
**Architects**  
8a Baynes Mews --- London --- NW3 5BH

Linton Studio, 35 Steele's Road  
London NW3 4RG

www.brodwight.co.uk office@brodwight.co.uk  
Tel 020 7722 0810 This drawing is copyright

Drawing Title:  
**Proposed Front Elevation**

Drawing Ref:  
**1076-AP2-04B**

Date  
December 2018

Scale  
1:50@A2 / 1:100@A4