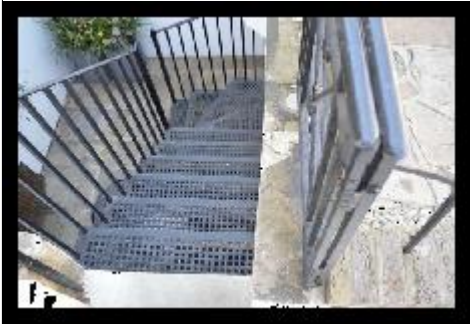




Existing railings retained.
New square checker plate metal stair,
Balustrade rails to be equal to ex.
Half round handrail 50 x 12mm to match ex.
Simple 'drop -on' hinge to gate.



Form new gate from
existing balustrading

Street level

Existing Window retained
and overhauled as required

Basement level

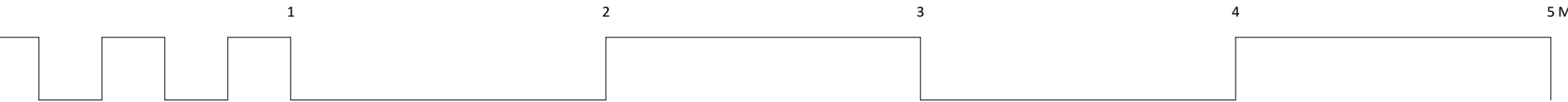
Front elevation

Ground Floor Plan

Basement Plan

Existing Window retained and overhauled as required

Revise door to inward opening.



Metal stairs, use existing
pattern to

Lead roof.

Street level

Revise door swing.
Timber door and sidelight

Basement level

Lead roof.

REV B 22.11.2019 Ex. Basement Window retained and repaired as required
REV A 14.11.2019 Stairs moved to inner face of lightwell.

DRAWING TITLE	PROJECT	SCALE	1 : 20 @ A1
PROPOSED EXTERNAL STAIRS	14 Argyle Street London WC1H 8EG	DATE	July 2019
		DWG No	572 20 B