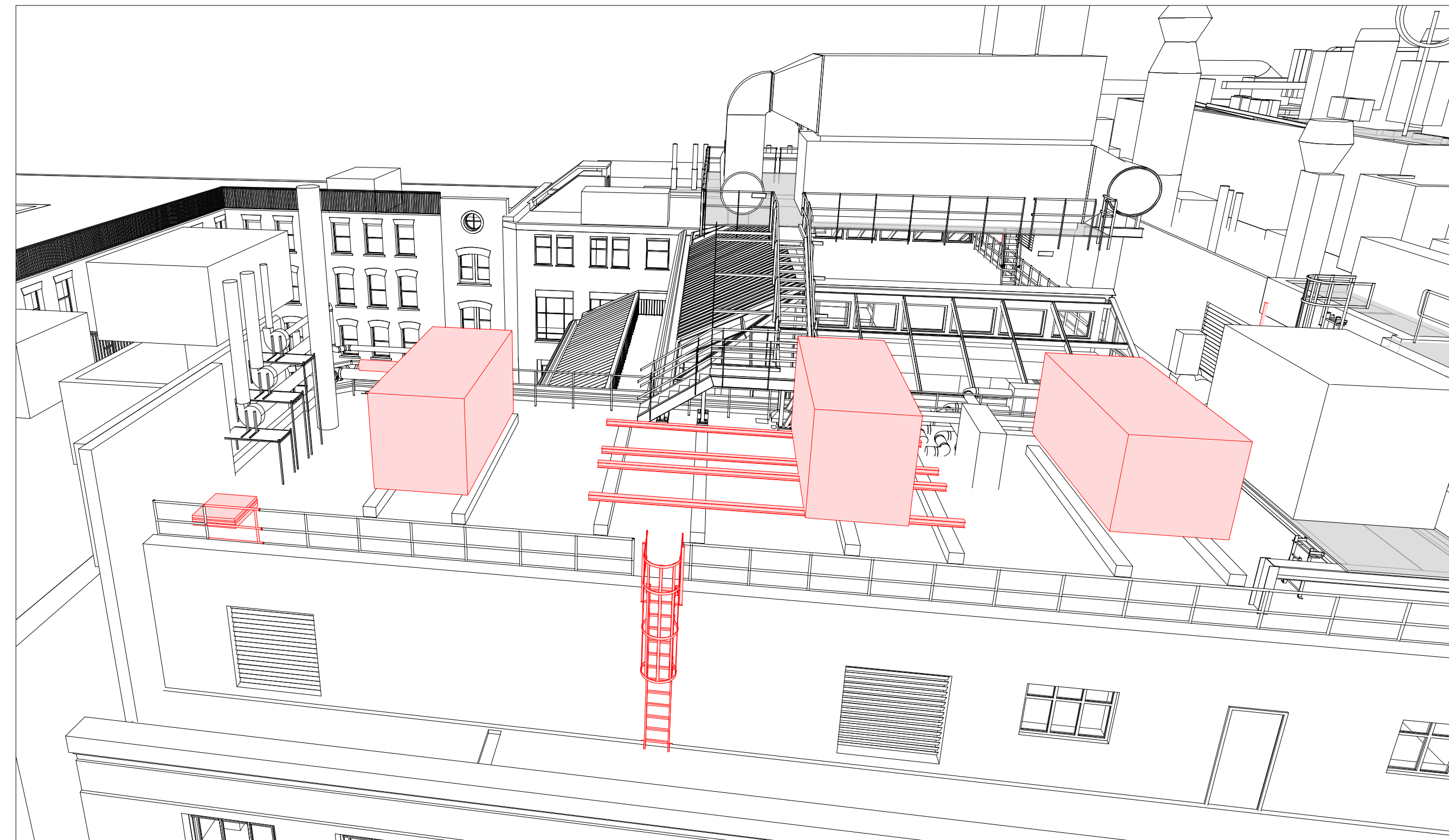


DO NOT SCALE
 THIS DRAWING IS © IAN RITCHE ARCHITECTS LTD
 Dimensions to be verified on site.
 Figured dimensions to take preference to those scaled.
 All discrepancies to be clarified with the project Architect.
 Unless otherwise stated all levels to be AOD.
 This drawing is the property of Ian Ritchie Architects Ltd. and is issued on the condition it is not reproduced, retained or disclosed to any unauthorized person, either wholly or in part without written consent.

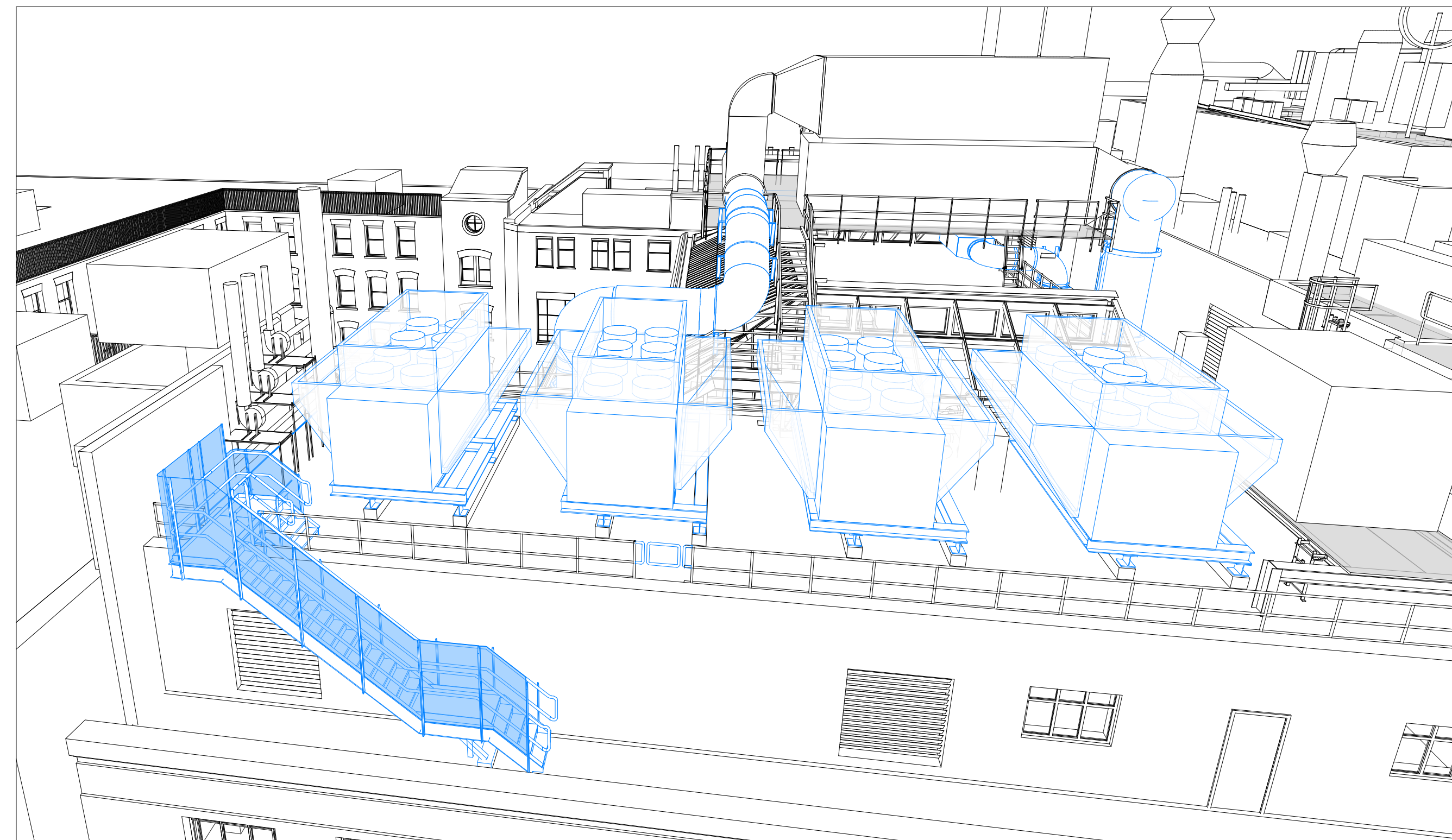
REVISIONS:
 1. Level 4 to Level 5 stair revised.
 2. Chiller side attenuators added.



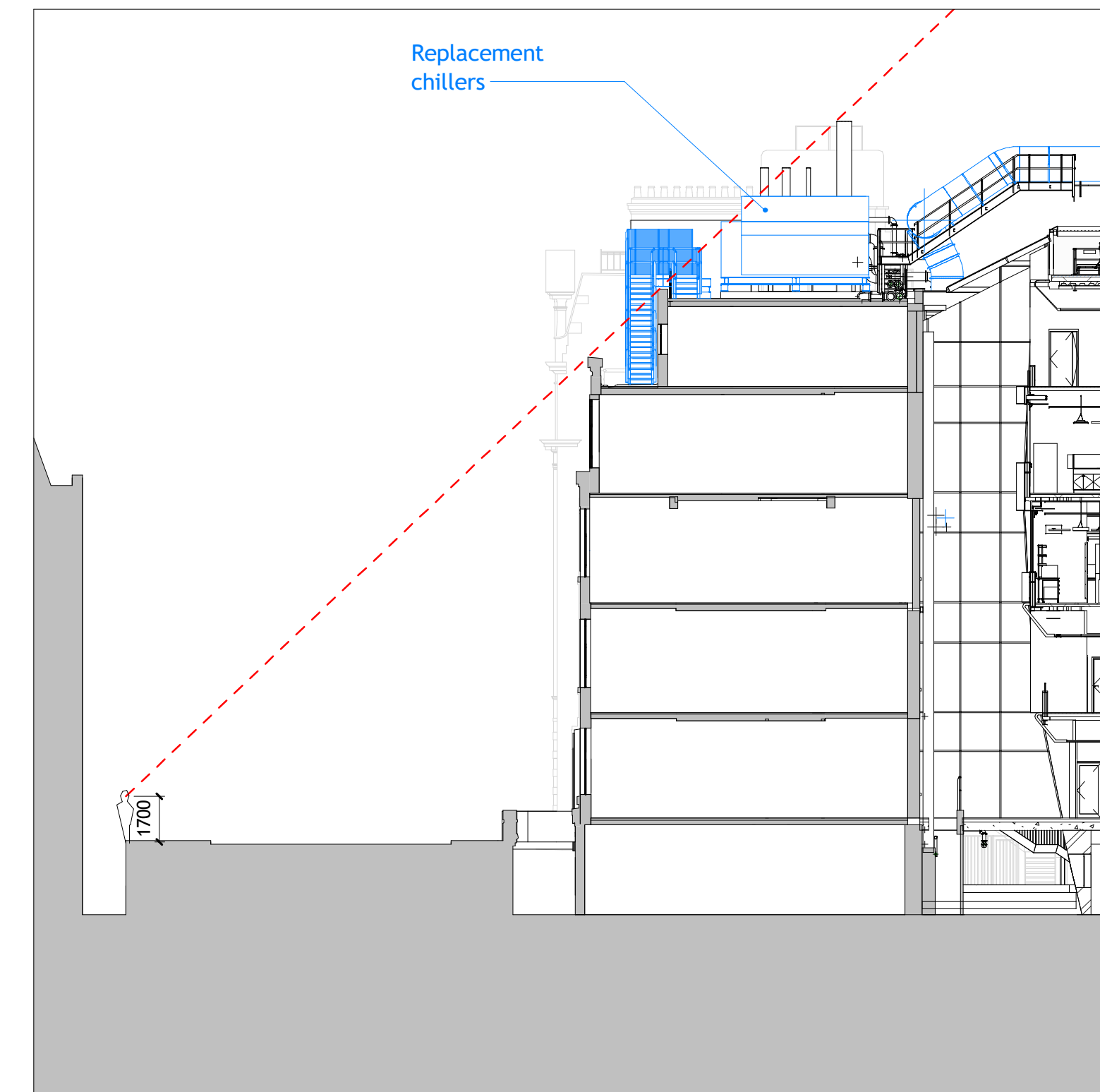
1 3D View Showing Existing Chillers



2 View from Gower Street / Store Street Corner



3 3D View Showing Proposed Chillers



4 Section Indicating View Cone From Opposite Side of Gower Street
 1 : 200

3B	26.11.19	CR	AS	Revised Planning	
3A	28.06.19	TR	AS	Issued for Planning	
Rev	Date	By	Ck	Ap	Description

Job Title
**LONDON SCHOOL OF
 HYGIENE AND TROPICAL
 MEDICINE (KEPPEL STREET)**

Drawing Title
**Replacement Chillers
 Visibility Assessment**

IAN RITCHE ARCHITECTS Ltd.
 110 Three Colt Street London E14 8AZ
 Tel: (44) 2073381100 Fax: (44)
 2073381199

Status PLANNING		
Scale 1 : 200@A1	Date 24.06.19	
Drawn TR	Checked CR	Approved AS
Job No. 739	Drawing No. 739-IRAL-02- 08-7001	Rev. 3B