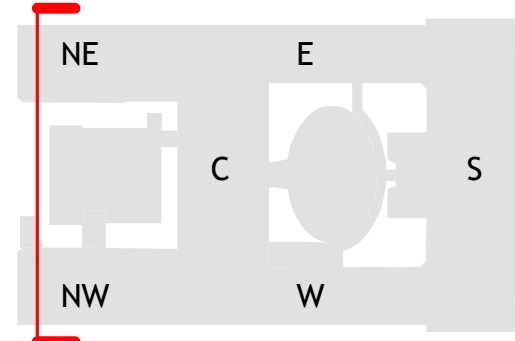
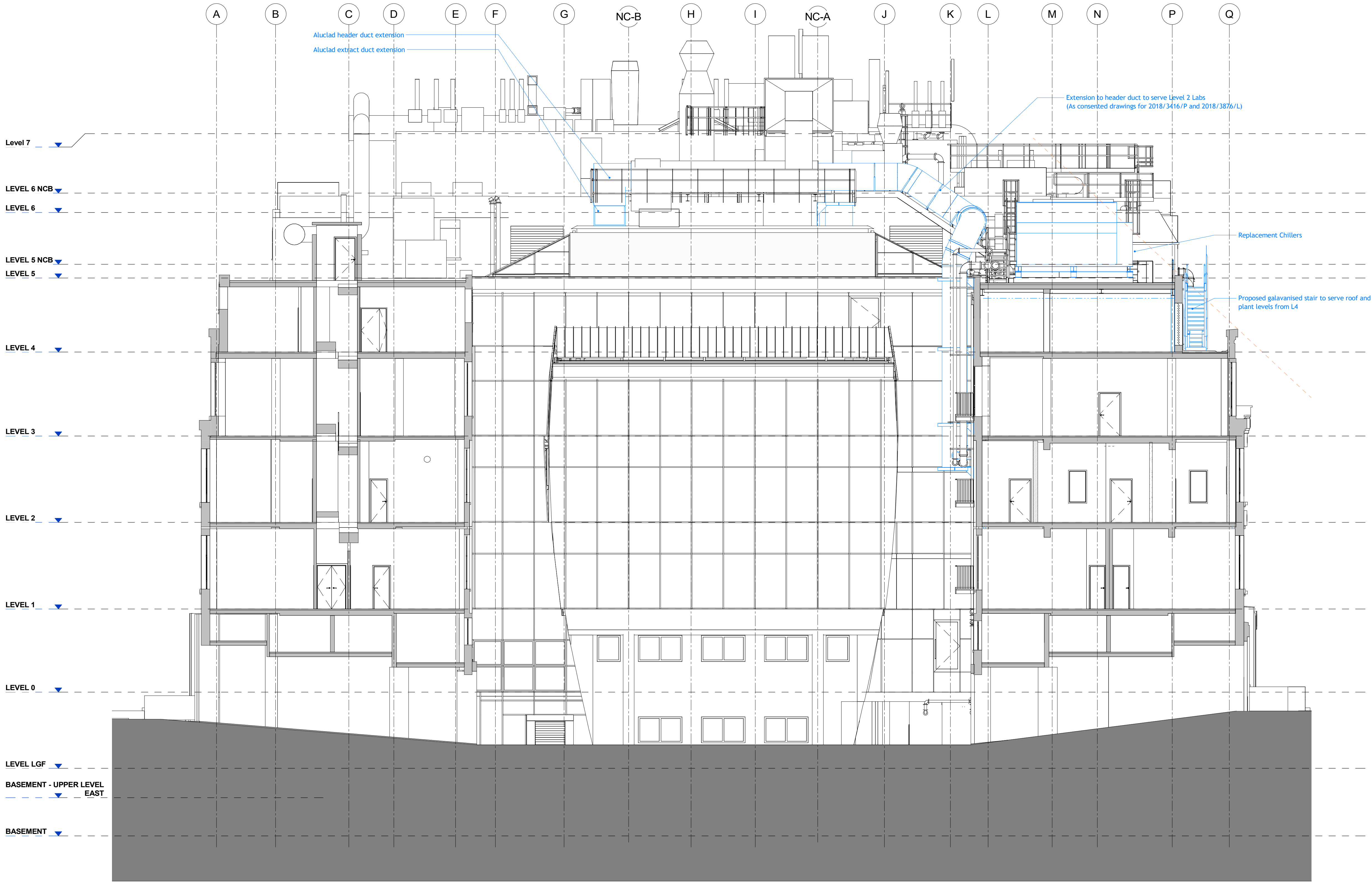


DO NOT SCALE
THIS DRAWING IS © IAN RITCHIE ARCHITECTS LTD
Dimensions to be verified on site.
Figured dimensions to take preference to those scaled.
All discrepancies to be clarified with the project Architect.
Unless otherwise stated all levels to be AOD.
This drawing is the property of Ian Ritchie Architects Ltd. and is issued on the condition it is not reproduced, retained or disclosed to any unauthorised person, either wholly or in part without written consent.

REVISIONS:

1. Level 4 to Level 5 stair revised.
2. Chiller side attenuators added.



	26.11.19	CR	CR	AS	Revised Planning
	28.06.19	TR	CR	AS	Issued for Planning
v	Date	By	Ck	Ap	Description

Job Title
LONDON SCHOOL OF
HYGIENE AND TROPICAL
MEDICINE (KEPPEL STREET)

Drawing Title
Planning Section -
Proposed - NW Wing
Looking South

© IAN RITCHIE ARCHITECTS LTD.
110 Three Colt Street London E14 8AZ
Tel: (44) 2073381100 Fax: (44)
2073381199

Status
PLANNING

Scale
As indicated@A1

Date
24.06.19

Drawn
TR

Checked
CR

Approved
AS

Job No.
739

Drawing No.
739-IRAL-02-
08-2251

Rev.
3B

1 Planning Section - Proposed - North Courtyard Looking South
1 : 100