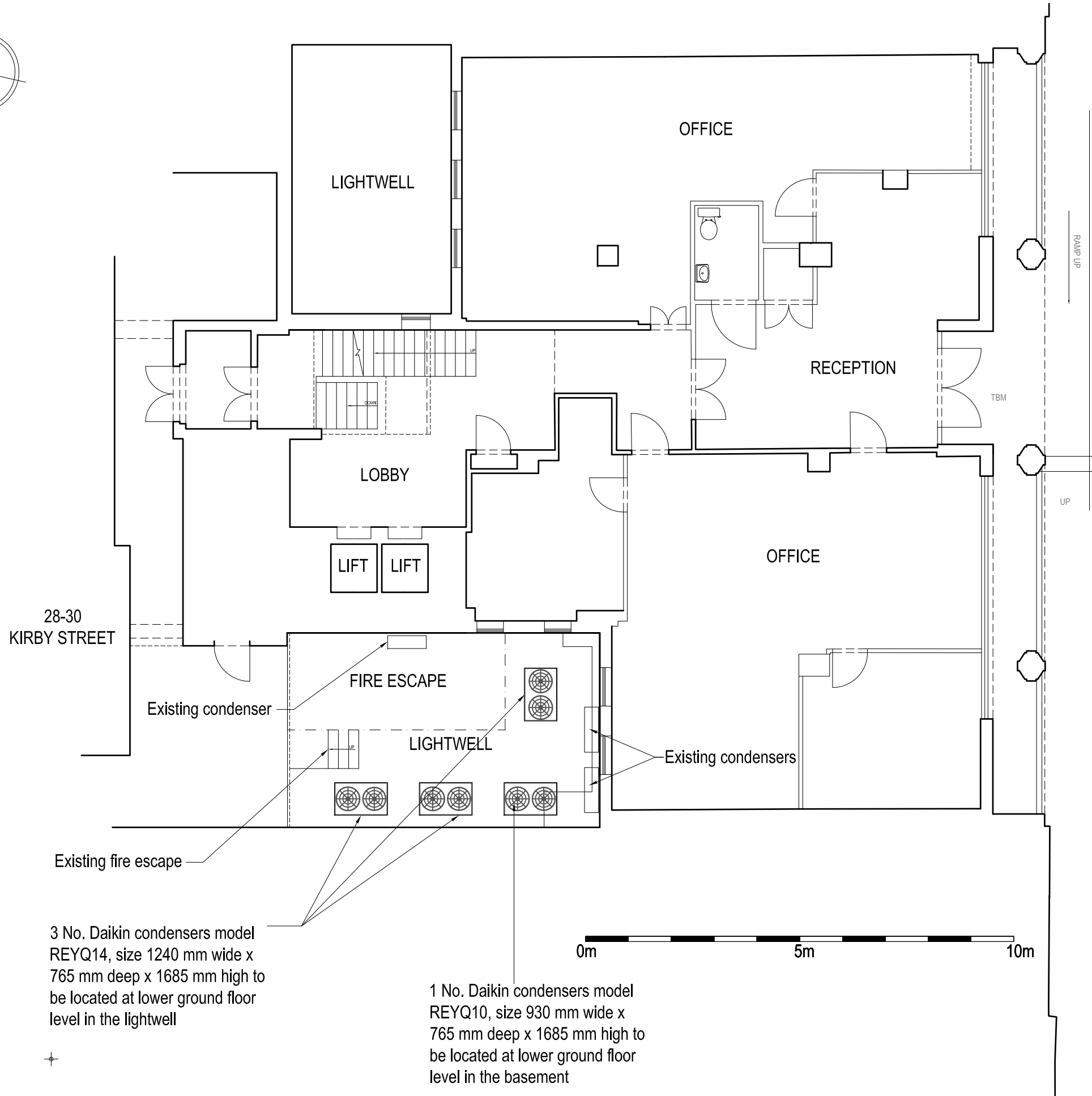
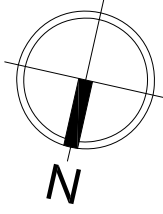


NOTES  
 All dimensions and levels to be checked by Contractor and verified before work commences; dimensions must not be scaled from this drawing.  
 Copyright reserved.

EC REGULATIONS - GENERAL NOTE  
 Where reference is made on this drawing to British Standards or to specific manufacturer's products or trade names, this is intended to indicate a minimum acceptable standard of performance etc. Materials and components conforming to an equivalent European Standard may be used and supporting evidence shall be produced at tender stage to confirm fitness for purpose.



3 No. Daikin condensers model REYQ14, size 1240 mm wide x 765 mm deep x 1685 mm high to be located at lower ground floor level in the lightwell

1 No. Daikin condensers model REYQ10, size 930 mm wide x 765 mm deep x 1685 mm high to be located at lower ground floor level in the basement

HATTON GARDEN

## PLANNING ISSUE

ESTEL PROPERTY INVESTMENTS No.3 LTD

One Bridge Wharf  
 156 Caledonian Road, London N1 9UU  
 Tel: 020 7636 6833

Threeways House  
 36 George Street, Oxford OX1 2BJ  
 Tel: 01865 260 600

e-mail: info@tmd-surveyors.co.uk  
 www.tmd-surveyors.co.uk



Project  
 40-42 HATTON GARDEN  
 LONDON  
 EC1N 8EB

Drawing:  
 PROPOSED  
 GROUND FLOOR  
 GENERAL ARRANGEMENT PLAN

Scale:	Date:	Drawn By:	Checked By:
1:100@A3	OCT 2019	GAW	DMC
Job No.	Dwg No.	Rev'n	
10245	PL-04	.	.
		.	.
		.	.