

E1.0 Existing Lower Ground Floor Plan

12A Orde Hall Street

1830

Rev - PLANNING

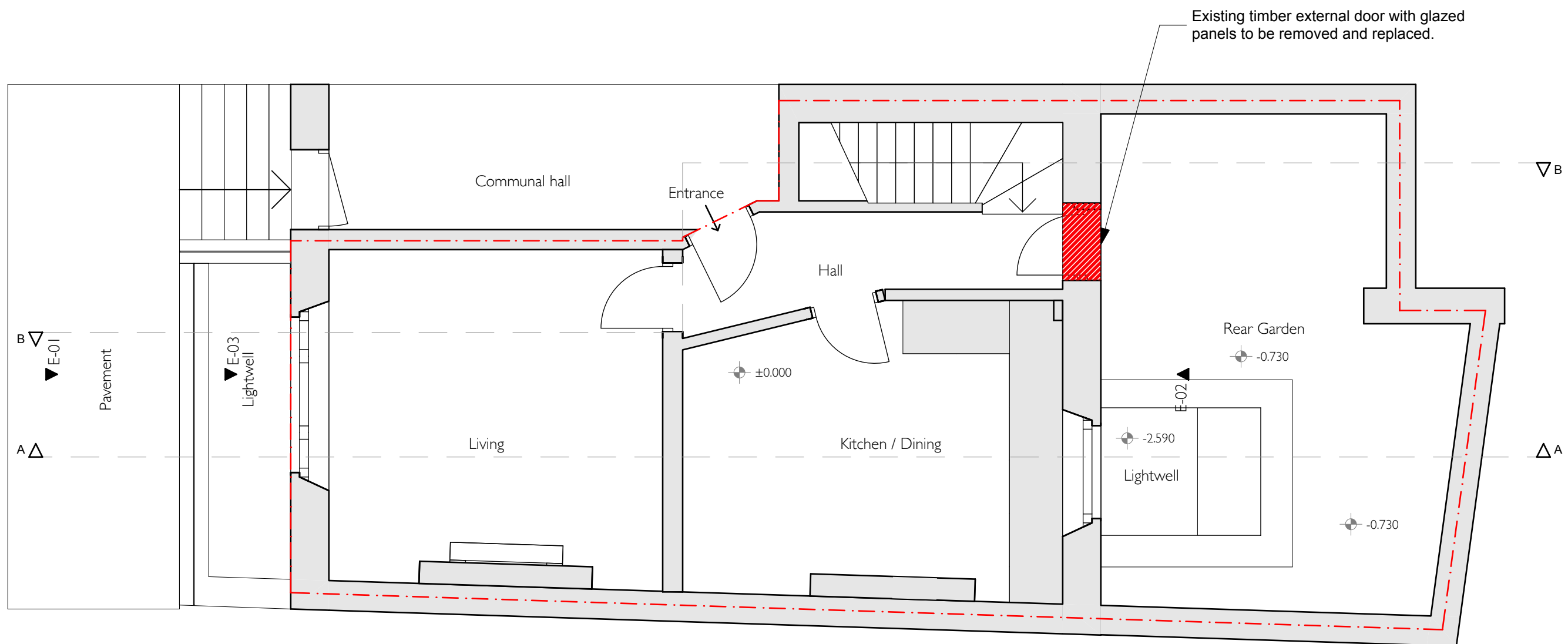
Issued 22/11/19

POYNITS WORKS

© Copyright 2019
All rights reserved
Poynts Works Ltd. 1:50 scale at A3



Existing single glazed timber sash window
to be removed and replaced.



E1.1 Existing Upper Ground Floor Plan

12A Orde Hall Street

1830

Rev - PLANNING

Issued 22/11/19

POYNITS WORKS

© Copyright 2019
All rights reserved
Poynts Works Ltd.

1:50 scale at A3





Front Elevation E-01

E2.0 Existing Front Elevation

12A Orde Hall Street

1830

Rev - PLANNING

Issued 22/11/19

POYNITS WORKS

© Copyright 2019
All rights reserved
Poynts Works Ltd. 1:50 scale at A3



Front Elevation - including Front Lightwell E-03

Existing timber external door with
glazed panels to be removed and
replaced.

E2.1 Existing Rear Elevation

12A Orde Hall Street

1830

Rev - PLANNING

Issued 22/11/19

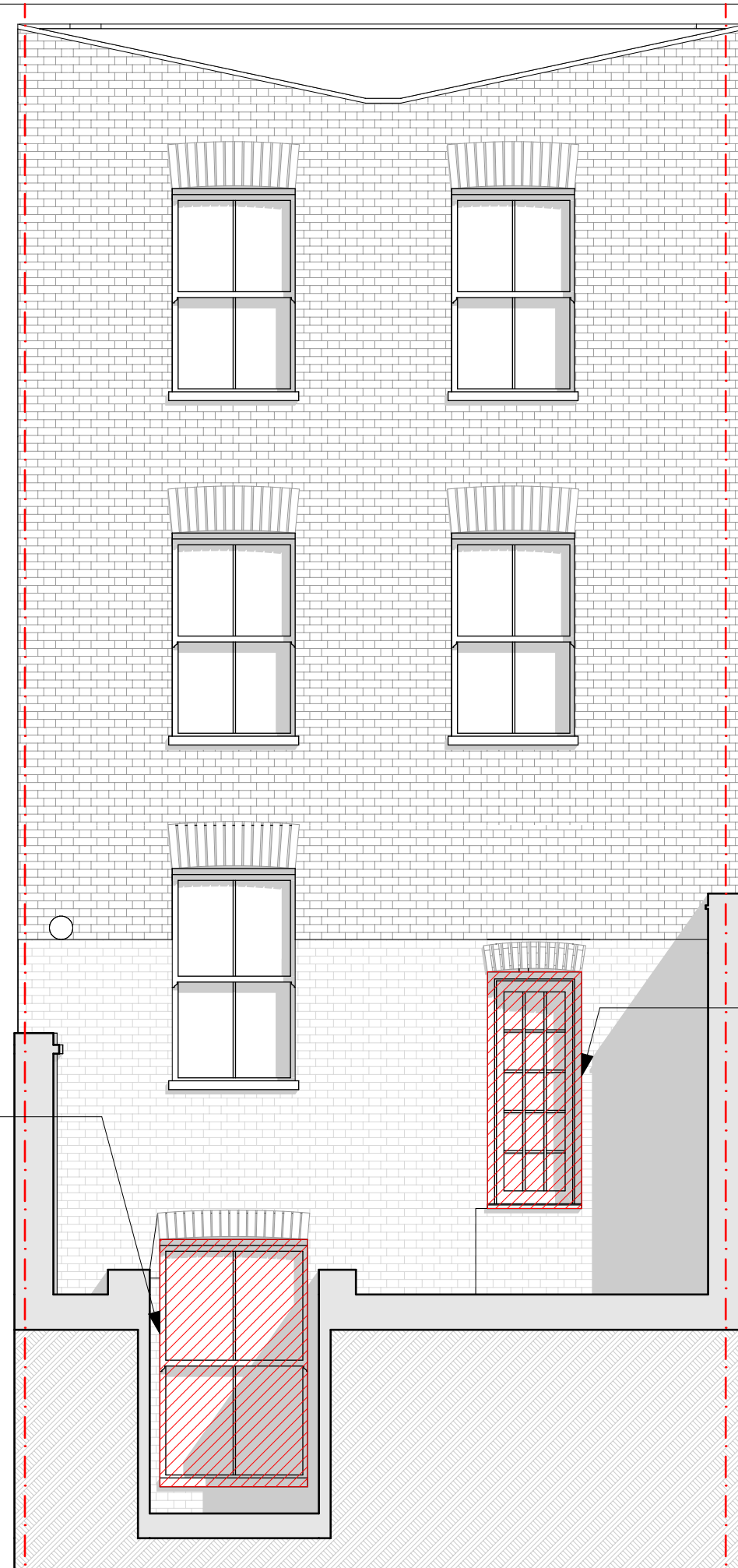
POYNITS WORKS

© Copyright 2019
All rights reserved
Poynts Works Ltd. 1:50 scale at A3



Existing single glazed timber sash window to be removed and replaced.

Existing timber external door with glazed panels to be removed and replaced.



Rear Elevation E-02