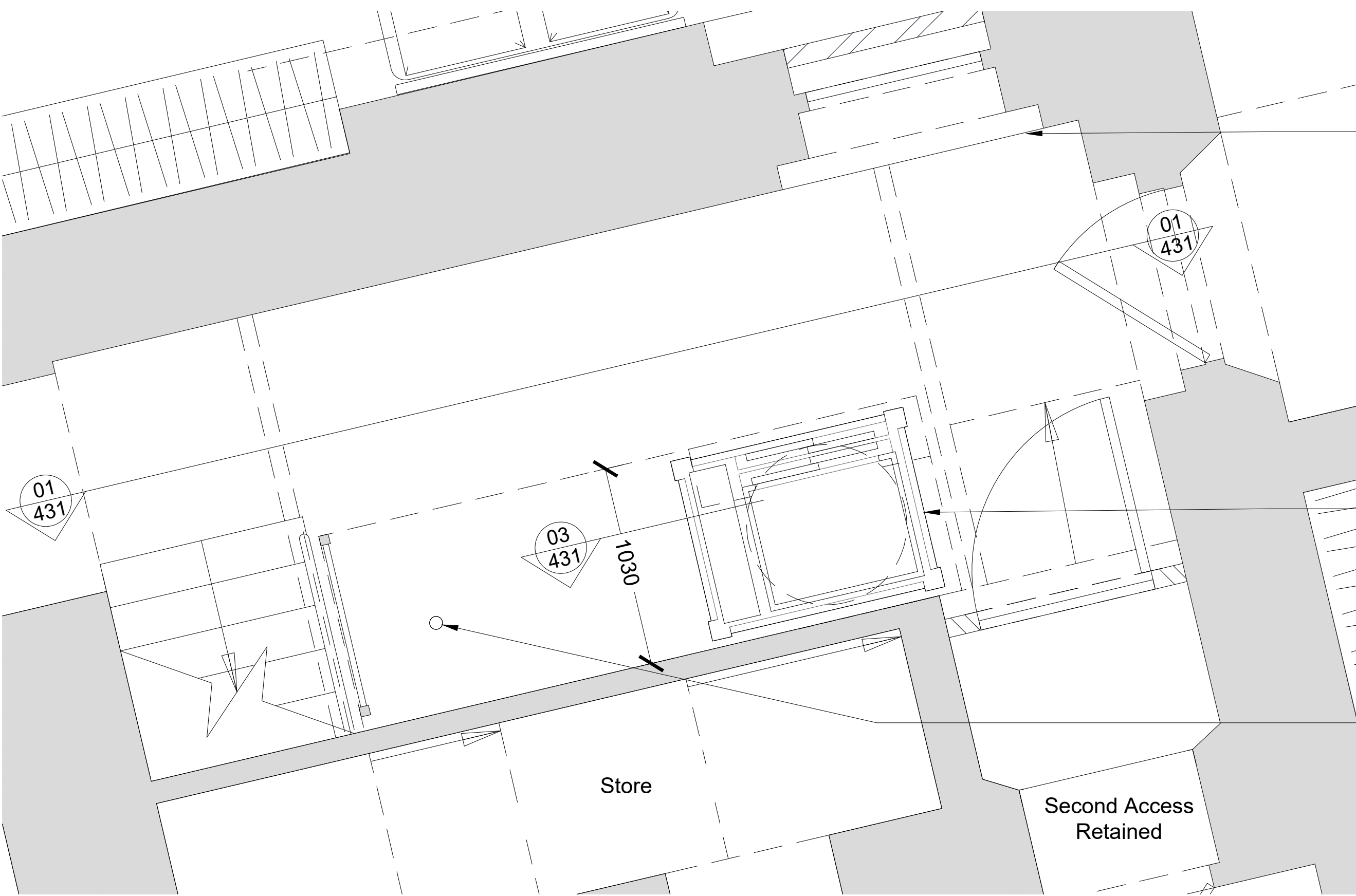
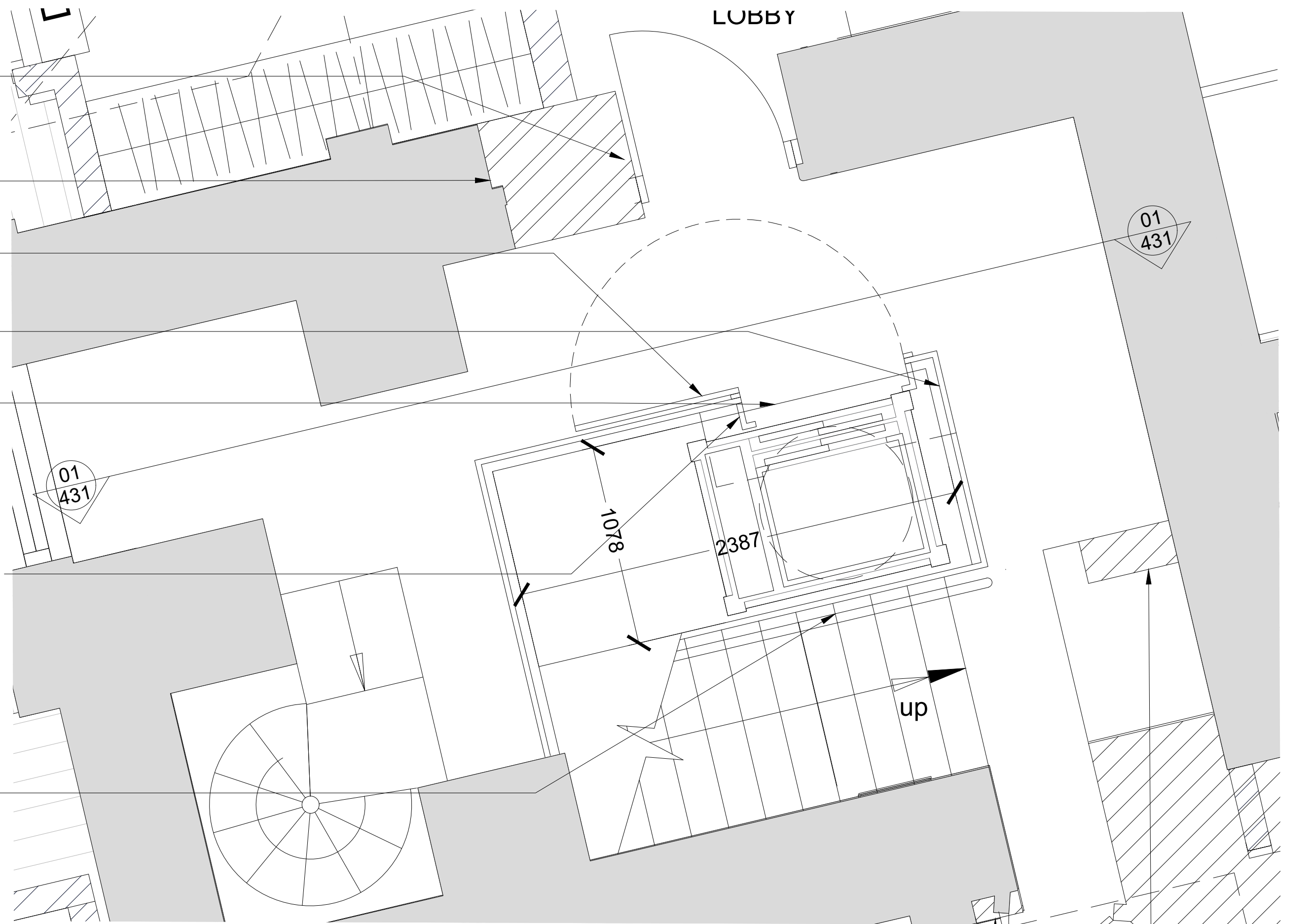


2 - FIRST FLOOR PLAN



1 - GROUND FLOOR PLAN

- Blocked door detail
- New door opening and replacement door to match existing
- Red brick infill to match existing
- Existing balustrade folded out with hinge
- Existing balustrade retained
- Perforated metal landing extension, galvanized and painted black. Steel angle support to structural engineer specification
- New metal balustrade to match corresponding floor balustrade, painted black
- Existing fire pole access door retained
- New painted metal handrail to match existing handrail



3 - SECOND FLOOR PLAN

- Remove nib and brickwork over
- Infill corner

- Existing door fixed shut
- New lift (dashed circle and lines denote circular lift and protruding landing permitted in previous permission)
- Existing fire pole retained

Note:
Dashed circle and lines within stair opening denote circular lift and protruding landing permitted in previous permission.

Revisions						Revisions					
Rev	Date	By	Description	Checked	Approved	Rev	Date	By	Description	Checked	Approved
P1	18.11.17	ABF	DRAFT Preliminary Issue	LP	RH						
P2	31.01.18	ABF	DRAFT Preliminary Issue	LP	RH						
P3	22.03.18	RB	Planning Conditions Discharge	JM	RH						
P4	23.10.18	TS	Lift Amendment	JM	RH						
P5	20.06.19	RB	Lift Amendment	ABF	RH						
P6	20.09.19	RH	Lift Amendment	ABF	RH						
P7	31.10.19	RH	Lift reduced in size	ABF	RH						

A1
A3

Client Sign Off		Architect / Originator: Tate Harmer Platinum Land Project: Belsize Park Firestation Drawing Title: Proposed Lift Plan		Unit G182, Stamford Works, 3 Gilt Street, London N16 6JH Tel: +44 (0)207 241 7481 Email: studio@tateharmer.com 8 Overpel House, 1 Duke of York Square, Kings Road, London, SW3 4LY Date of Origin: 28.11.17 Scale: 1:20 Drawing Number: BFS THA PR AL 430 P7 Revision Drawing Status: Planning		Do not scale. All dimensions to be checked on site. This drawing is copyright.	
-----------------	--	---	--	---	--	--	--