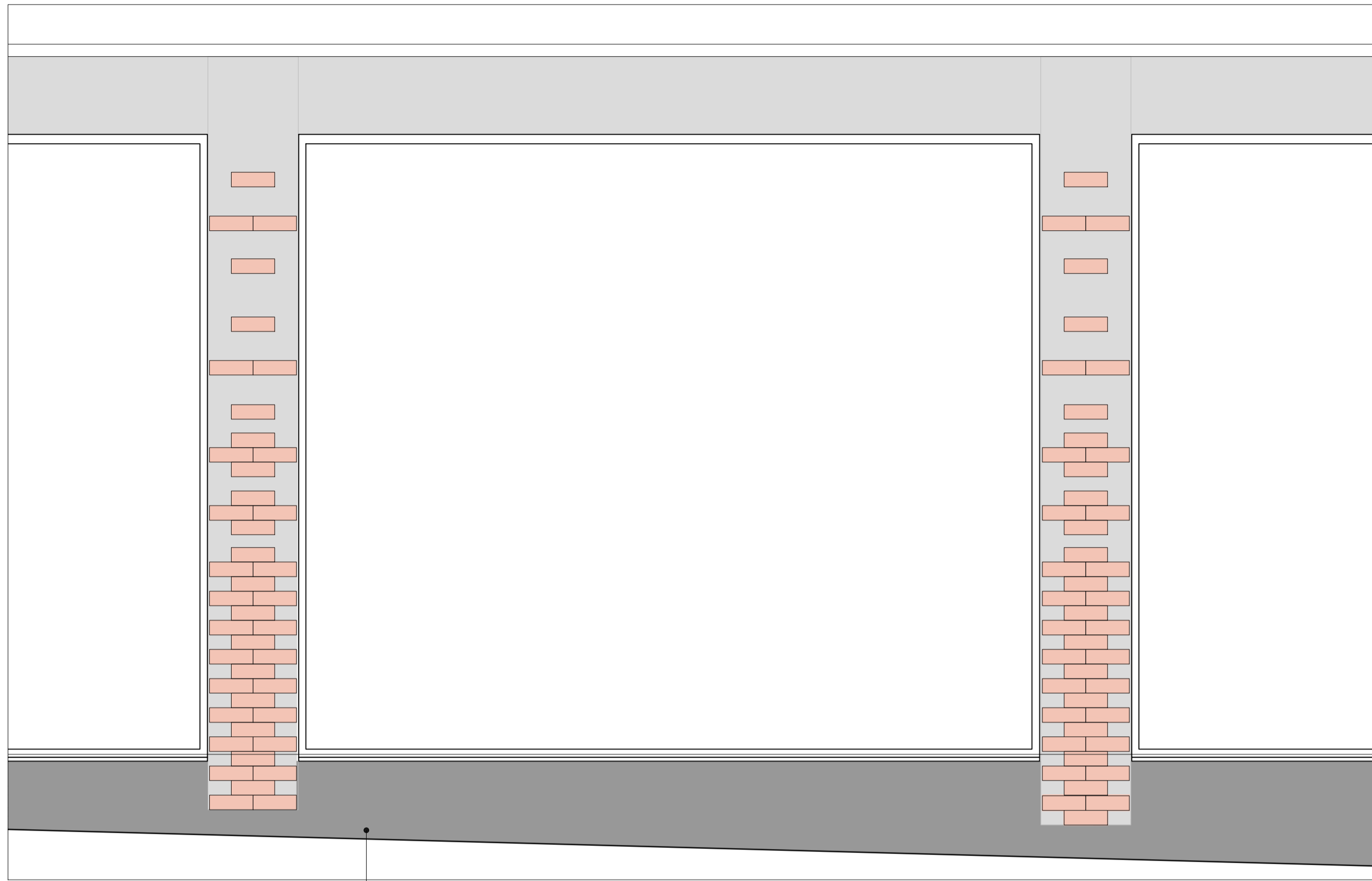
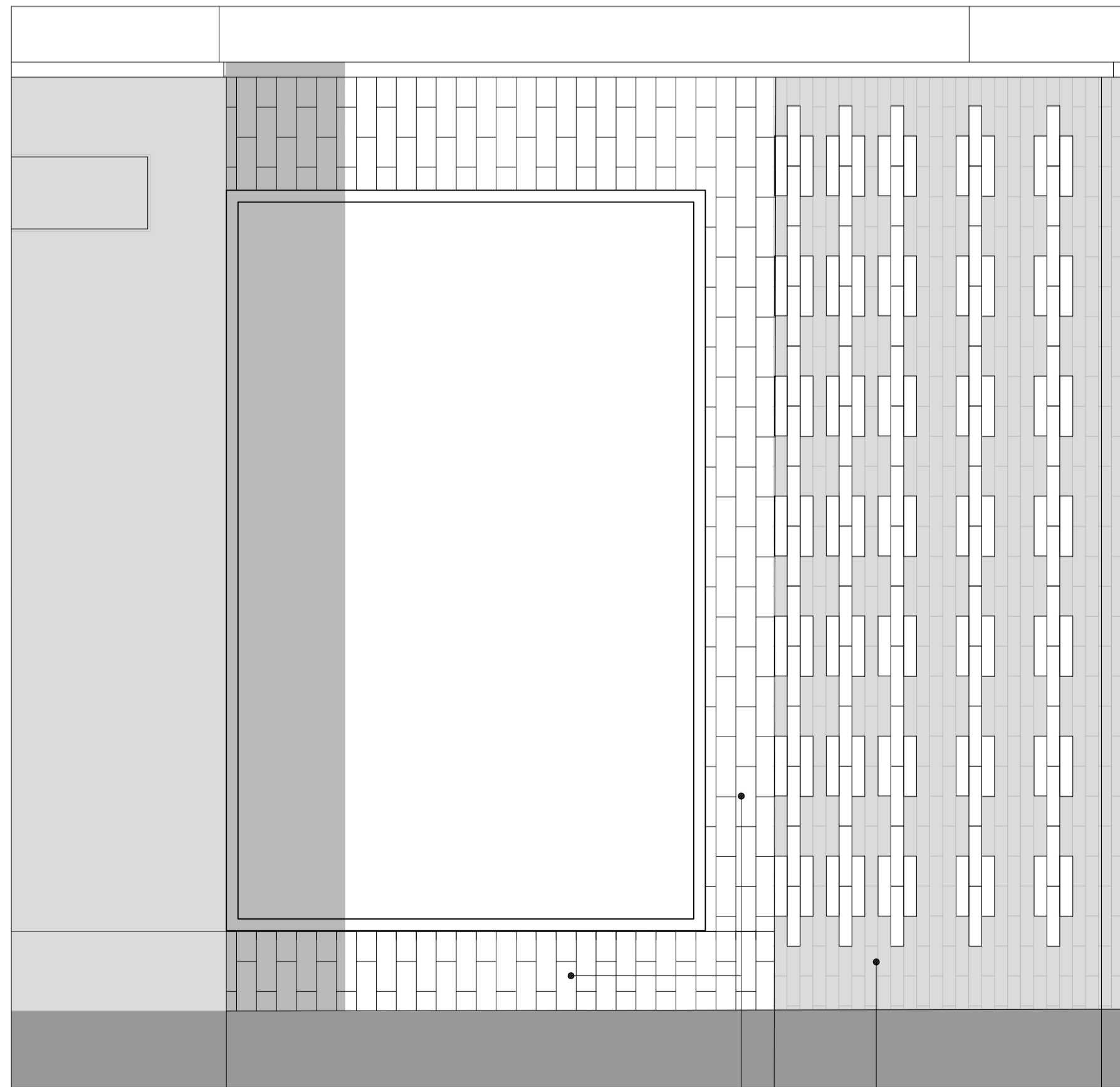


1 KEY PLAN
1:200@A1



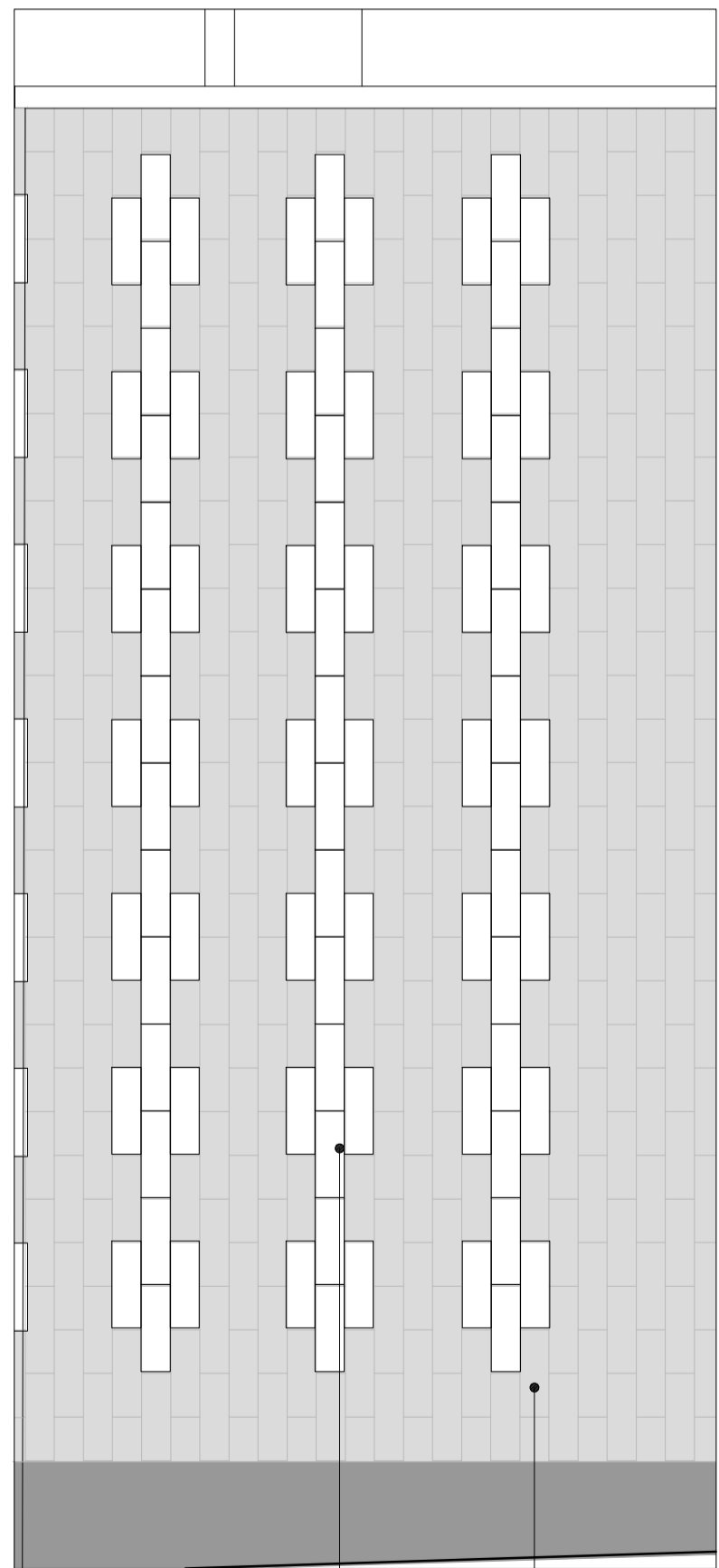
2 RENDER DETAIL
1:20@A1

Existing render system made good and painted in light grey with a dark grey plinth and brick coloured details.



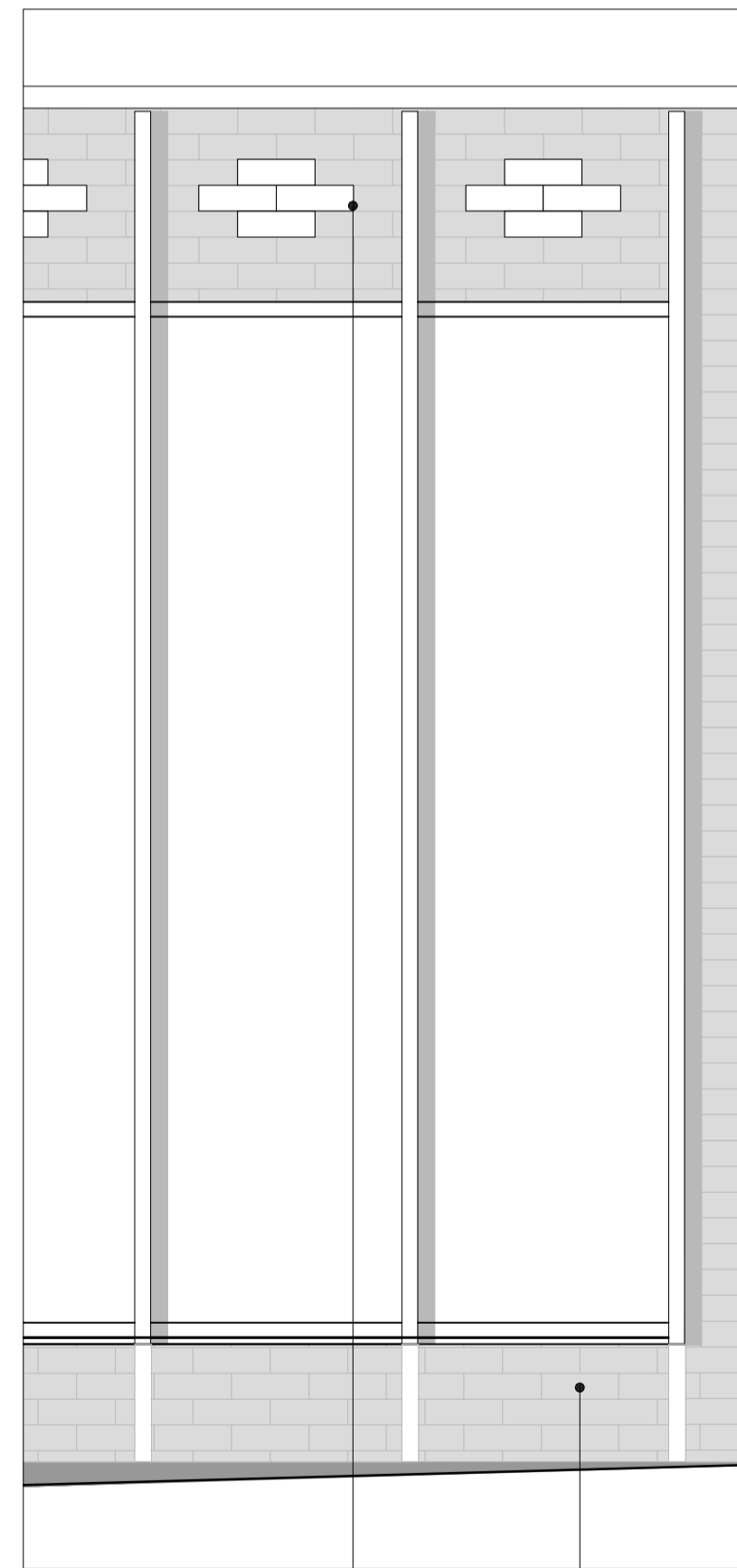
3 BRICK DETAIL
1:20@A1

HG Matthews hand dipped White glazed brick slip to replace existing render. Vertical stretcher bond with light mortar.



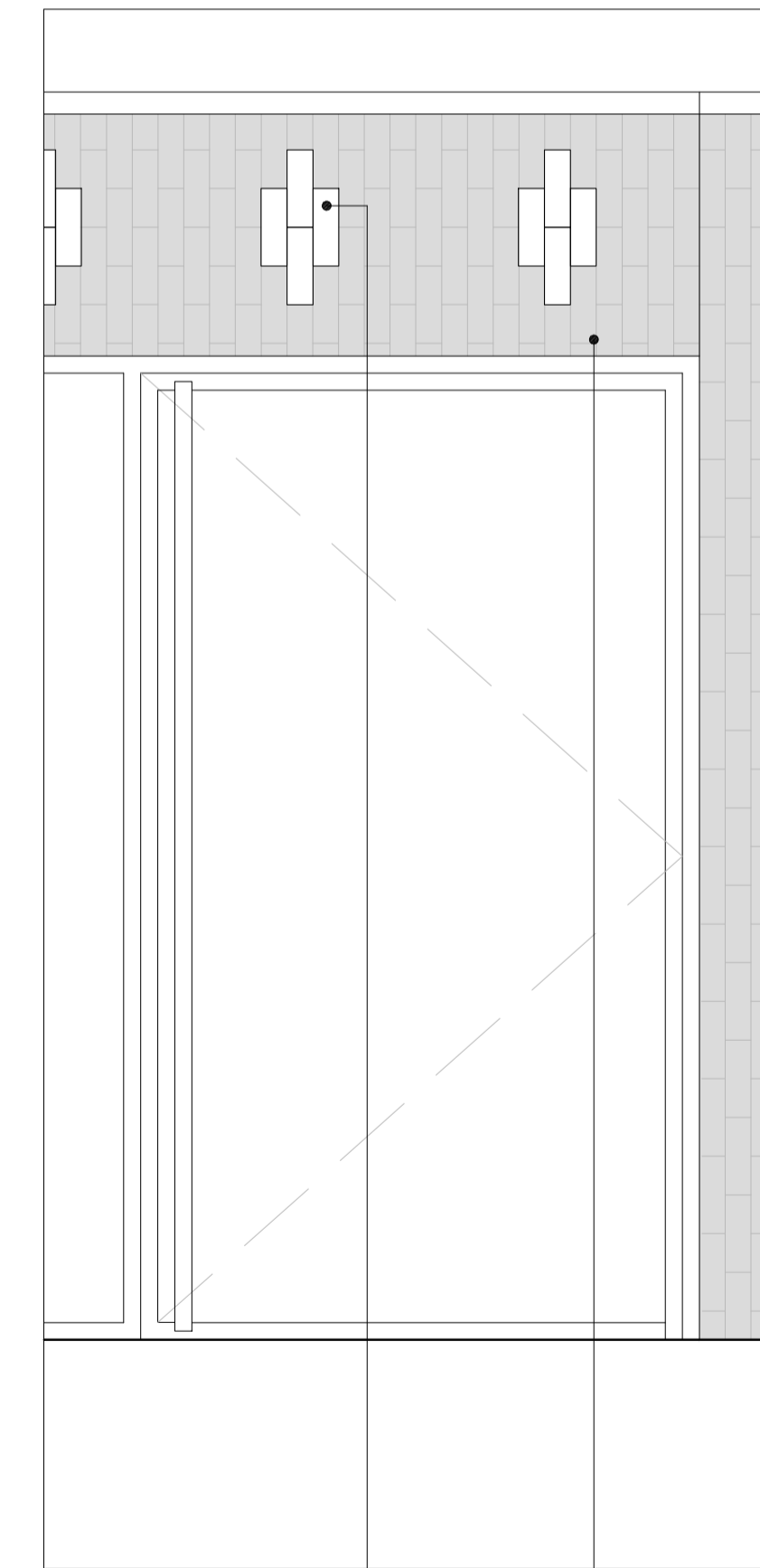
4 BRICK DETAIL
1:20@A1

HG Matthews hand dipped White glazed brick slip to replace existing render. Vertical stretcher bond with light mortar.



5 BRICK DETAIL
1:20@A1

HG Matthews hand dipped White glazed brick slip to replace existing render. Stretcher bond with light mortar.



6 BRICK DETAIL
1:20@A1

HG Matthews hand dipped White glazed brick slip to replace existing render. Stretcher bond with light mortar.



NOTES
DRAWINGS INDICATE DESIGN INTENT ONLY.
ALL DIMENSIONS IN MILLIMETERS UNLESS NOTED OTHERWISE.
THE CONTRACTOR IS RESPONSIBLE FOR TAKING AND CHECKING ALL DIMENSIONS.
DO NOT SCALE FROM THE DRAWING.
REPORT ALL CONFLICTS OF INFORMATION TO MINIFIE ARCHITECTS AND SEEK ADVICE BEFORE PROCEEDING.
THIS DRAWING IS THE COPYRIGHT OF MINIFIE ARCHITECTS LTD.
WHERE GIVEN DIMENSIONS ARE ONLY APPROXIMATE & SUBJECT TO A MEASURED SITE SURVEY.
THESE ARE SUBJECT TO AN M&E & STRUCTURAL SURVEY. THIS DRAWING IS BASED UPON A
COPIES OF ORIGINAL ARCHIVE DRAWINGS AND ITS ACCURACY AND PROPORTIONALITY CANNOT BE
WHOLLY RELIED UPON.

NO.	DATE	ISSUE/REVISION

A 04.11.2019 Amendments to brick detailing.

CHARLES DARWIN HOUSE
12 ROGER STREET
HOLBORN
LONDON
WC1N 2JU

DRAWING TITLE:
**PROPOSED
BRICK DETAILS**

DRAWN : RC SCALE : 1:20 @A1 NORTH
CHECKED : BM DATE : OCT '19

PROJECT NO. : 1575 DRAWING NO. : AD/420
STATUS : PLANNING

MINIFIE ARCHITECTS
Studio 1,
14 Marshalsea Road
London SE1 1HL

© Minifie Architects Ltd