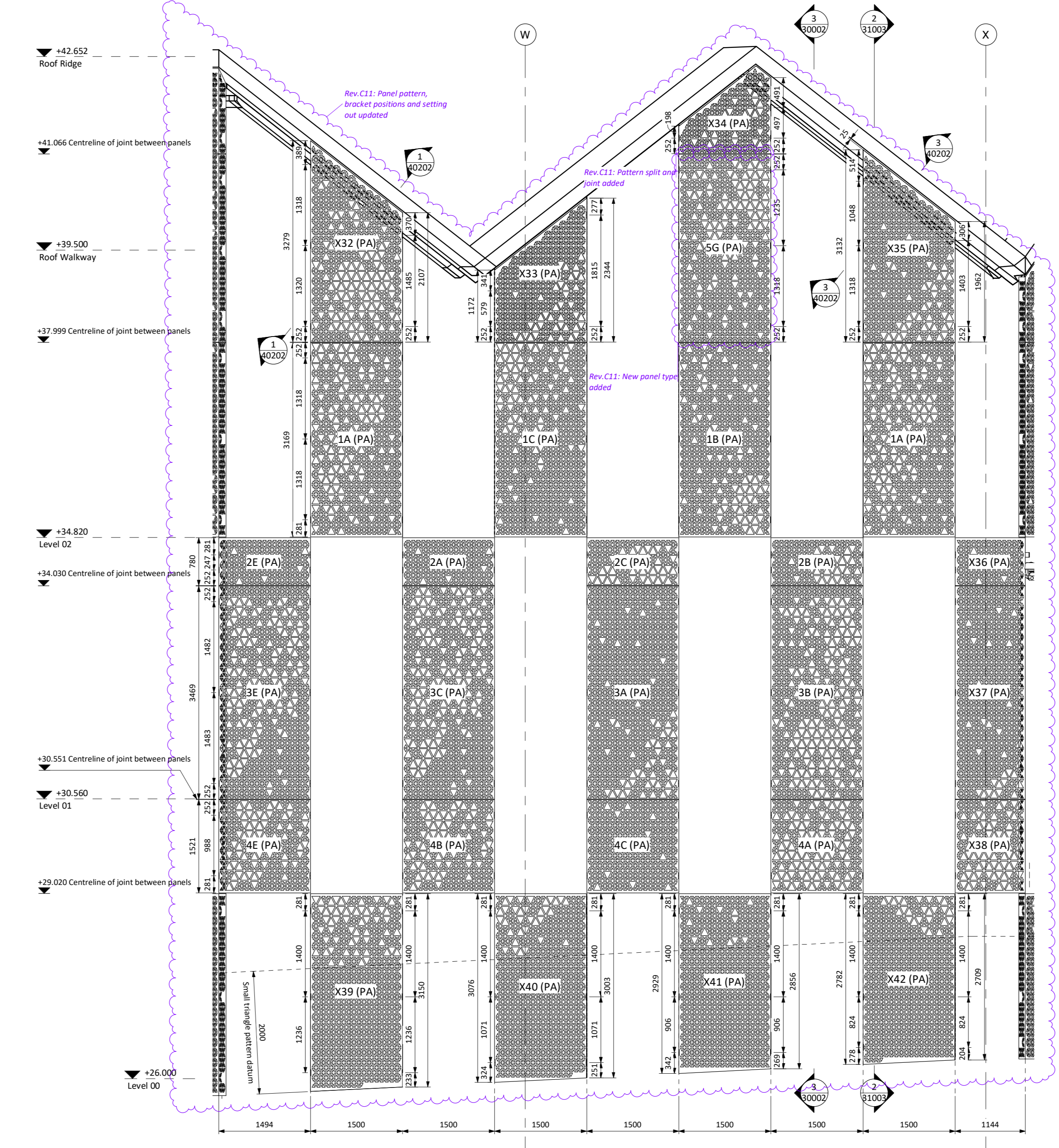


1 Curtain Walling East Elevation  
1:50

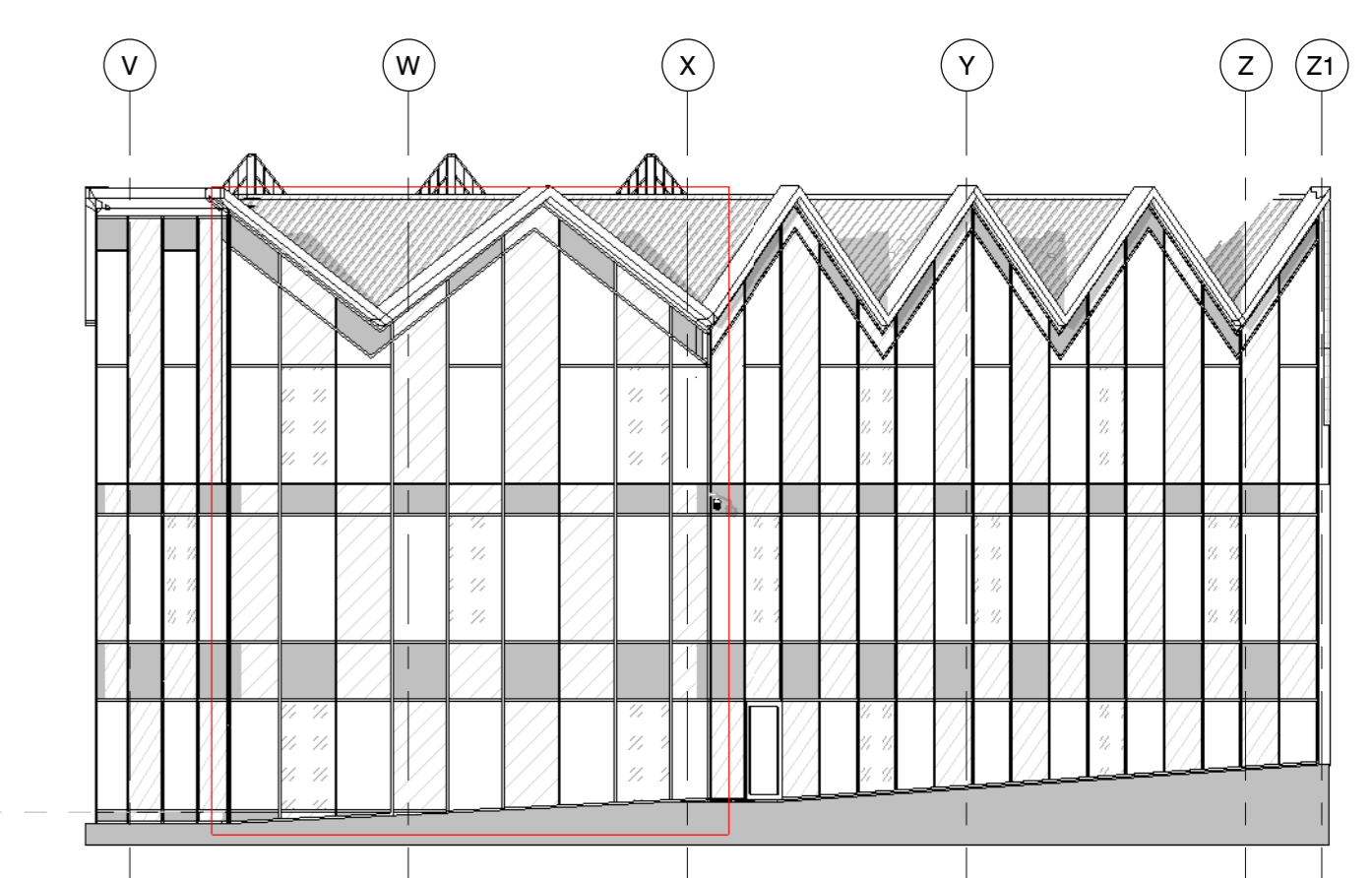


2 Curtain Walling East Elevation Perforated Panels  
1:50

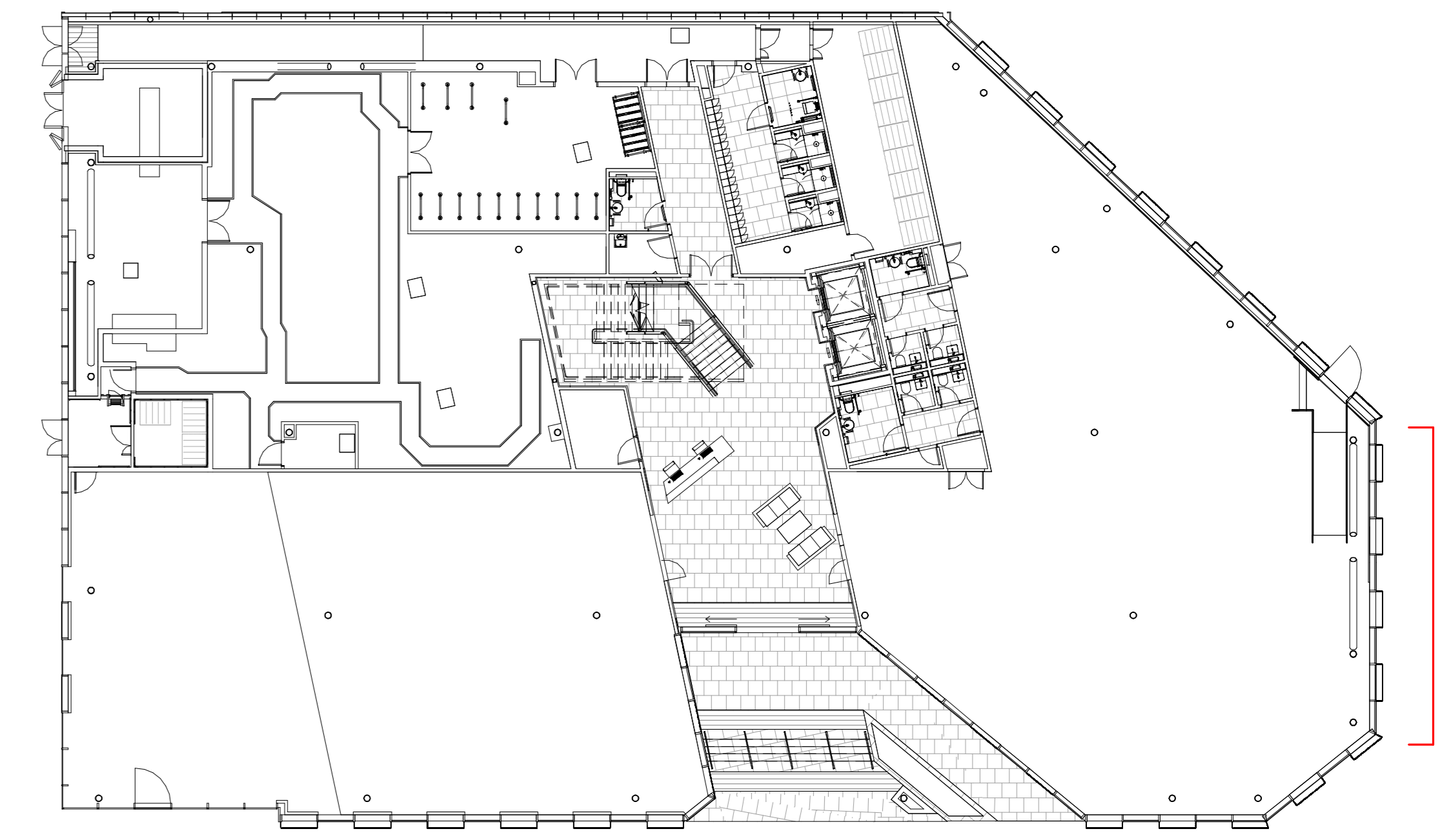
- |     |  |     |   |
|-----|--|-----|---|
| ALP | PPC metal louvred panel (RAL 70C)              | AAP | Natural anodised aluminium-faced insulated panel          |
| C   | Clear glass                                    | GB  | Glazed balustrade   |
| PA  | Perforated natural anodised aluminium panel    | EAC | Embossed natural anodised aluminium-faced insulated panel |
| TG  | Translucent glass                              | SG  | Double-glazed back painted spandrel panel                 |
| BAA | Black anodised aluminium cladding              | SP  | Insulated panel (finish RAL 9006)                         |
| ARC | Natural anodised aluminium rainscreen cladding | ERC | Embossed natural anodised aluminium rainscreen cladding   |

All panel to panel joints to be 10mm excluding the West facade which will be butt-jointed - please refer to KXC-Q1-XX-001-A-STL-31-40110 & 40111 for detailed panel setting out principle

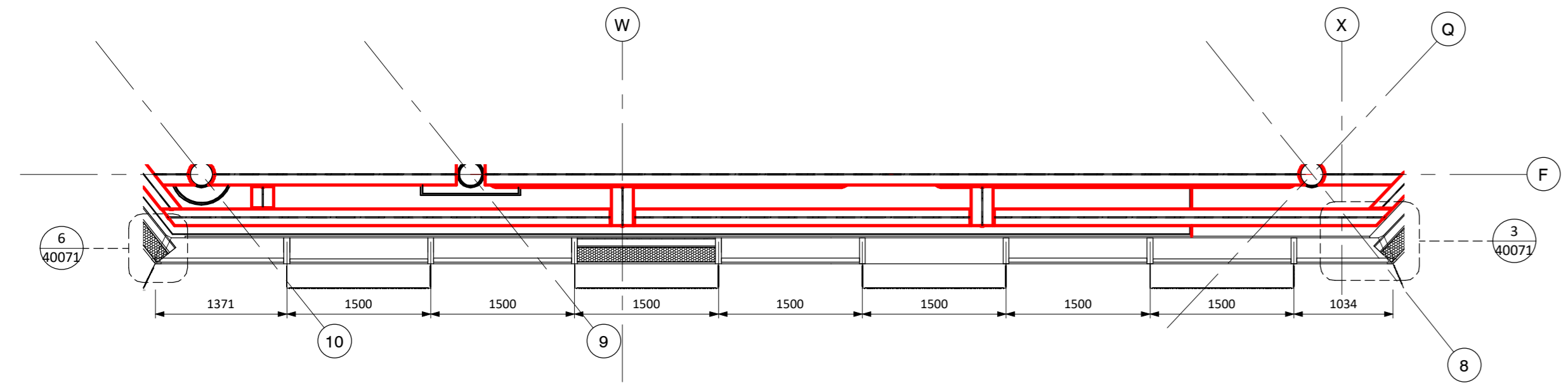
Panel Types Key  
1:50



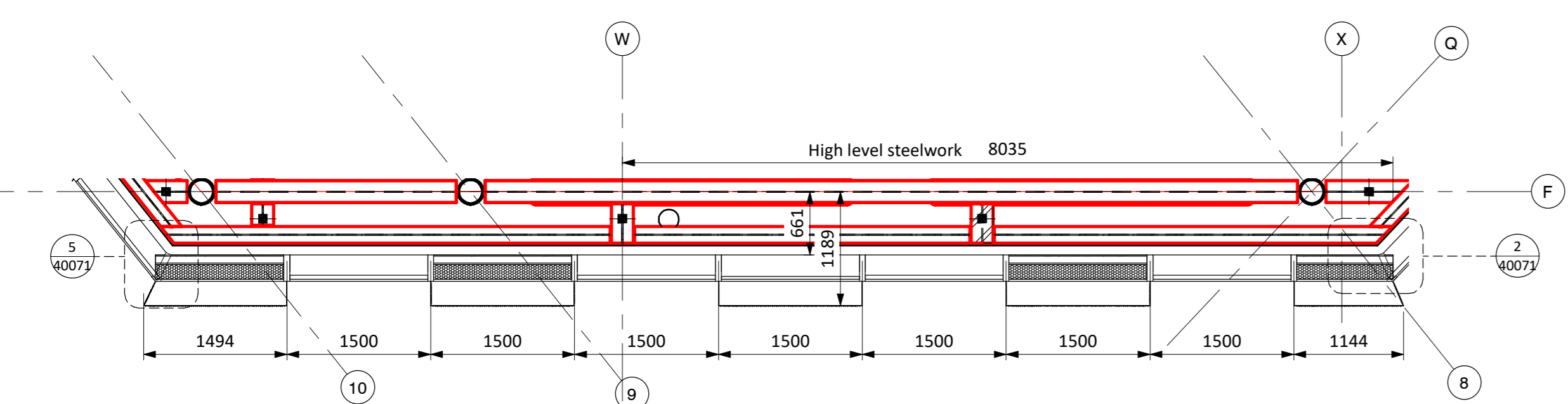
Curtain walling reference East elevation  
1:200



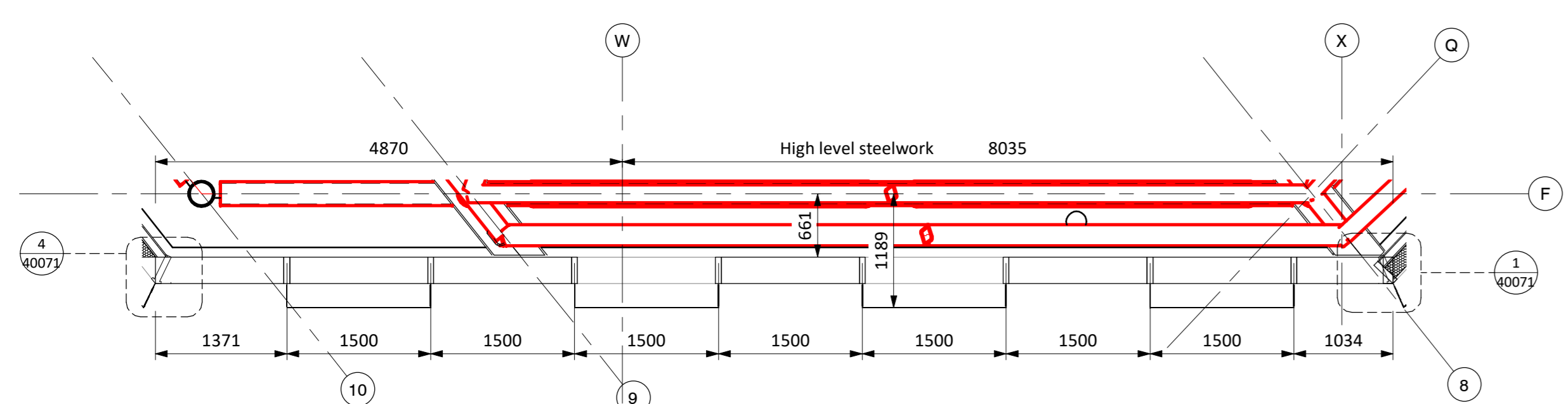
East Curtain Walling Plan Reference  
1:200



3 Level 00 Curtain Walling East Detail Plan  
1:50



4 Level 01 Curtain Walling East Detail Plan  
1:50



5 Level 02 Curtain Walling East Detail Plan  
1:50

STATUS	REV	DATE	DESCRIPTION	REVISOR
A	C11	18.09.19	Revised following CoA & FAA comments	AT
A	C10	29.08.19	General updates following FAA workshops	AT
S4	P80	05.12.18	Curtain walling updates	CC
S4	P58	12.10.18	Revisions made following Stage 4 CMT review	CC
S1	P55	02.10.18	Revisions made following Facade Workshop 23.08.18: Rev 4m perforated sheet size confirmed by FAA. Perforated panel dimensions updated.	CC
S4	P34	27.07.18	STAGE 4 ISSUE: Revisions made following CoA comments (23.07.18).	CC
S1	P18	20.06.18	Issued for co-ordination; changes identified.	CC
S1	P15	01.06.18	Issued for co-ordination; changes identified.	CC
S1	P14	25.05.18	First issue for co-ordination.	CC

**BAM Construction**

CLIENT: \_\_\_\_\_ REVISOR: AT  
CHECKED BY: CC  
ORIGINATOR NO: 151890

CONSULTANT: **STRIDE TREGLOWN**  
www.stride-treglow.com © Stride Treglow Limited 2017

PROJECT: King's Cross Q1  
Handside Street  
King's Cross Central  
London N1C 4AL

DRAWING TITLE: **Curtain Wall Elevation - East**

SUITABILITY STATUS: <b>A : CONSTRUCTION ISSUE</b>	SCALE: <b>As indicated @ A0</b>
SITE   PROJ.COLLECT.   ZONE   PROJ.REF   ROLE   ORIGIN.   CLASS.   NUMBER	REVISION: <b>C11</b>
KXC-Q1-ZZ-001-A-STL-31-40002	