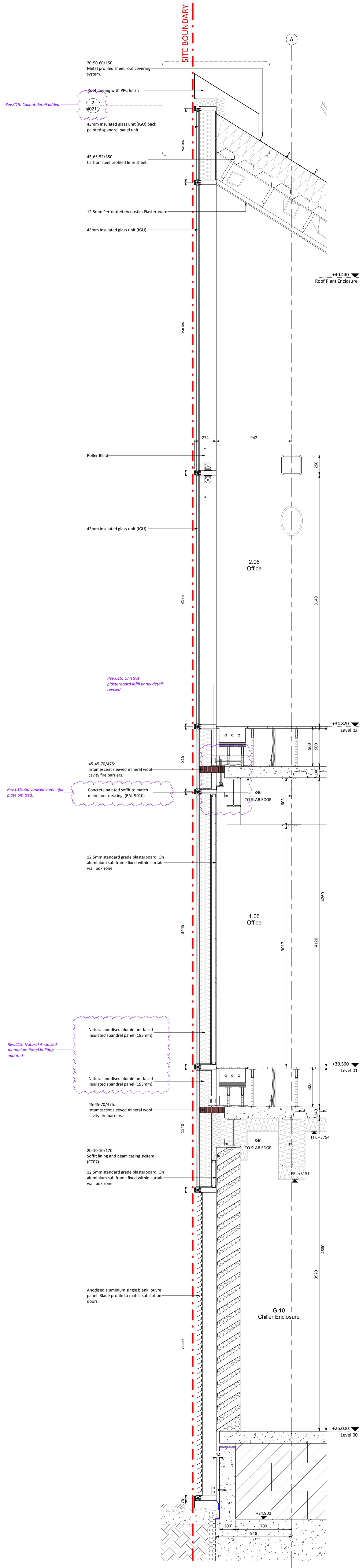


DRAWING NOTES

- The design of the external envelope is a Contractor's Design Portion (CDP). Therefore all elements comprising the external envelope of the building are shown for design intent/ coordination purposes only. Refer to Fleetwood Architectural Aluminium documentation for all external construction information.

BUILDING FABRIC PERFORMANCE

Element	Value
External Walls:	0.20W/m ² K
Floor:	0.18W/m ² K
Roof:	0.18W/m ² K
Windows, roof windows and roof lights:	0.9 W/m ² K
Personnel doors:	1.84W/m ² K
Air permeability (m ³ /hr/m ² @ 50 Pa)	3



1 Strip Section 3 West
1:20

STATUS	REV	DATE	DESCRIPTION
A	C15	18.10.19	General updates - changes identified where relevant.
A	C16	20.08.19	General updates following FAA workshops
S4	P82	07.12.18	Drawings updated
S4	P58	12.10.18	Revisions made following Stage 4 CMT review
S4	P53	12.09.18	Drawing amended following Arup's comments
S4	P52	12.09.12	First issue for co-ordination

CUSTOMER	REVISION
BAM Construction	JL
	CC
	151890

CONSULTANT
STRIDE TREGLOWN
 www.stride-treglow.com © Stride Treglow Limited 2017
 PROJECT
King's Cross Q1
 Handyside Street
 King's Cross Central
 London N1C 4AL

DRAWING TITLE
Strip Sections - West Elevation Sheet 2

SUITABILITY STATUS	SCALE
A : CONSTRUCTION ISSUE	As indicated @ A0
SITE PROJECT ZONE PROJREF ROLE ORIGIN CLASS NUMBER	REVISION
KXC-Q1-ZZ-001-A-STL-21-31012	C15