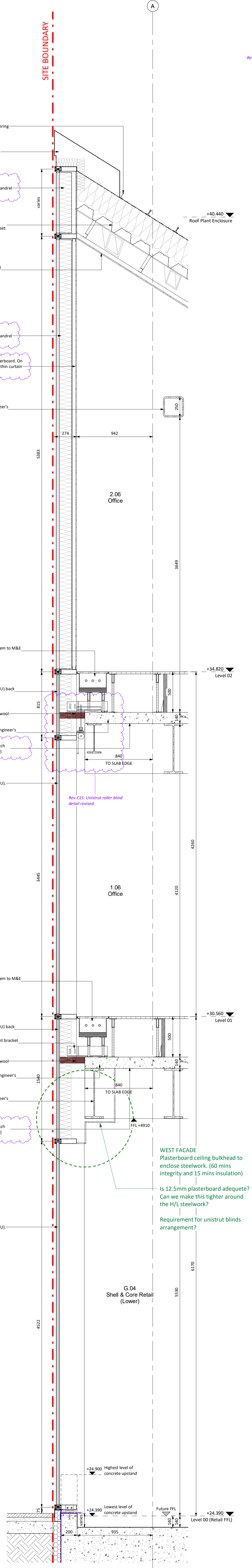


**DRAWING NOTES**

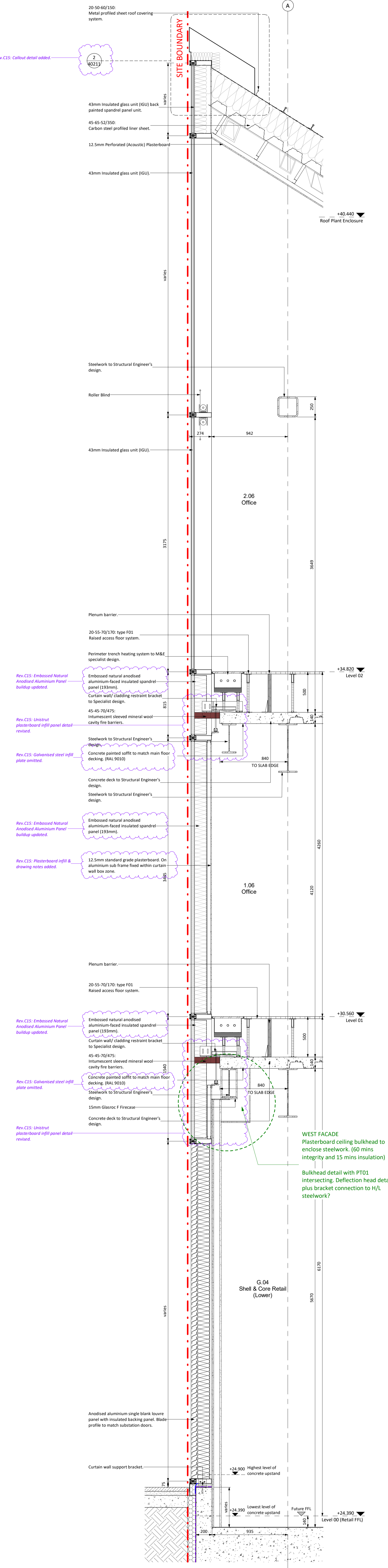
- The design of the external envelope is a Contractor's Design Portion (CDP). Therefore all elements comprising the external envelope of the building are shown for design intent/coordination purposes only. Refer to Fleetwood Architectural Aluminium documentation for all external construction information.

**BUILDING FABRIC PERFORMANCE**

Element	Value
External Walls:	0.20W/m²K
Floor:	0.18W/m²K
Roof:	0.18W/m²K
Windows, roof windows and roof lights:	0.9 W/m²K
Personnel doors:	1.84W/m²K
Air permeability (m³/hr/m² @ 50 Pa)	3



1 Strip Section 1 West 1:20



2 Strip Section 2 West 1:20

STATUS	REV	DATE	DESCRIPTION
A	C15	18.10.19	General updates - changes identified where relevant.
A	C10	29.08.19	General updates following FAA workshops
S4	P42	07.12.18	Drawings updated
S4	P58	12.10.18	Revisions made following Stage 4 CMT review
S4	P44	11.08.18	Slab and beam edge updated
S4	P42	28.08.18	Concrete upstands and ground level transoms revised.
S4	P40	15.06.18	STAGE 4 ISSUE: First Issue

CLIENT: BAM Construction  
 REVISION: JL  
 CHECKED BY: CC  
 ORIGINATOR: 151890

CONSULTANT: STRIDE TREGLOWN  
 www.stride-treglow.com © Stride Treglow Limited 2017  
 PROJECT: King's Cross Q1  
 Handyside Street  
 King's Cross Central  
 London N1C 4AL

DRAWING TITLE: Strip Sections - West Elevation Sheet 1

SUITABILITY STATUS	SCALE
A : CONSTRUCTION ISSUE	As indicated @ A0
SITE   PROJ.Collect.   ZONE   PROJ.Ref   ROLE   ORIGIN.   CLASS.   NUMBER	REVISION
KXC-Q1-ZZ-001-A-STL-21-31011	C15