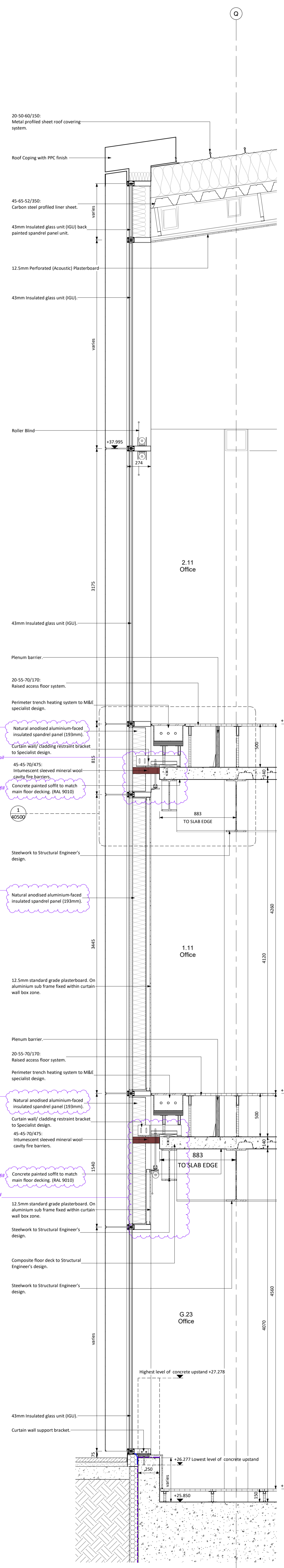
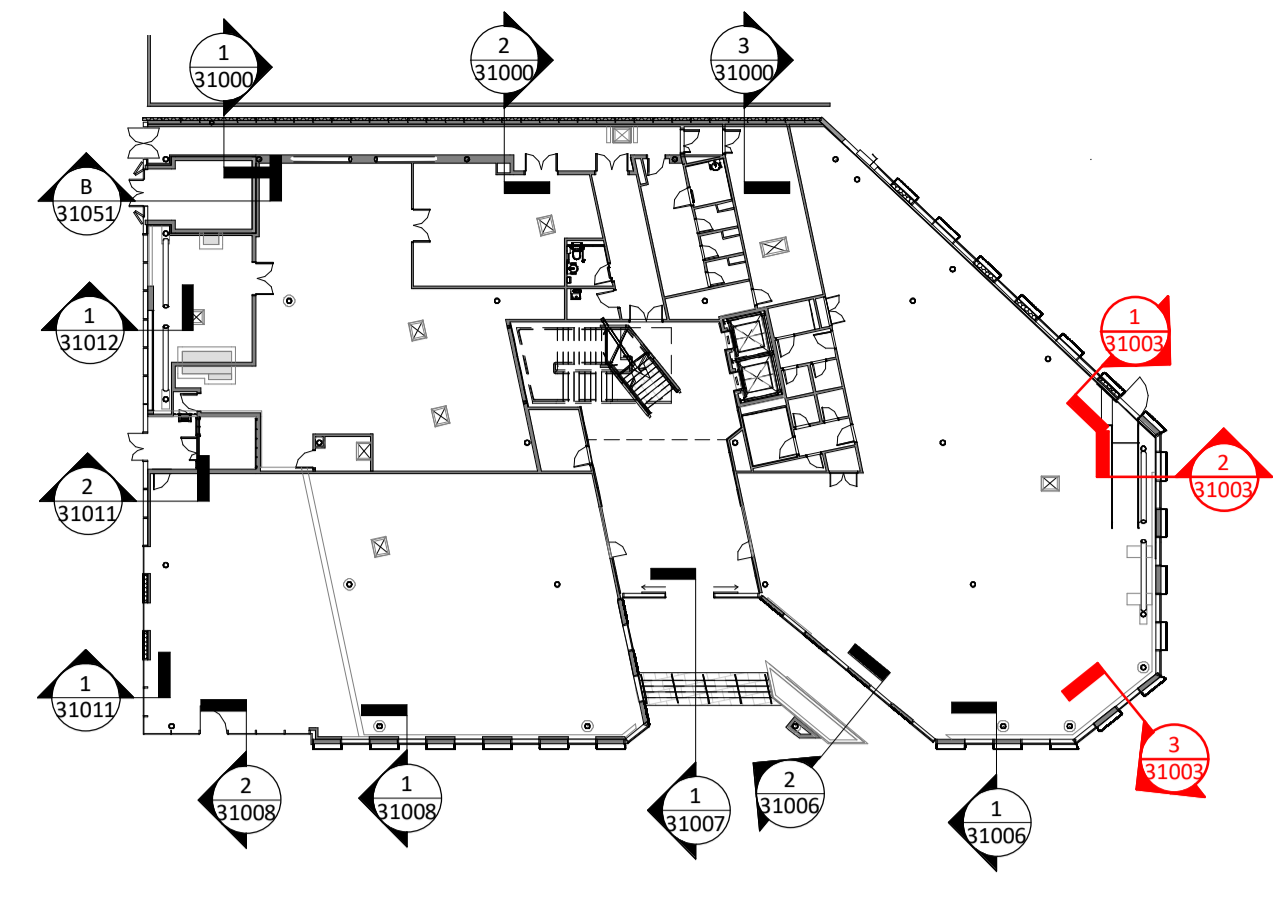


DRAWING NOTES

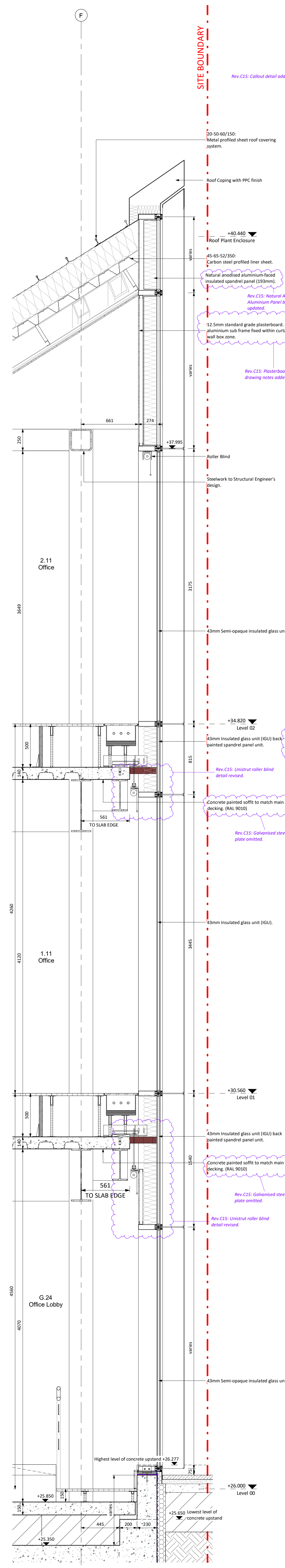
- The design of the external envelope is a Contractor's Design Portion (CDP). Therefore all elements comprising the external envelope of the building are shown for design intent/ coordination purposes only. Refer to Fleetwood Architectural Aluminium documentation for all external construction information.

BUILDING FABRIC PERFORMANCE

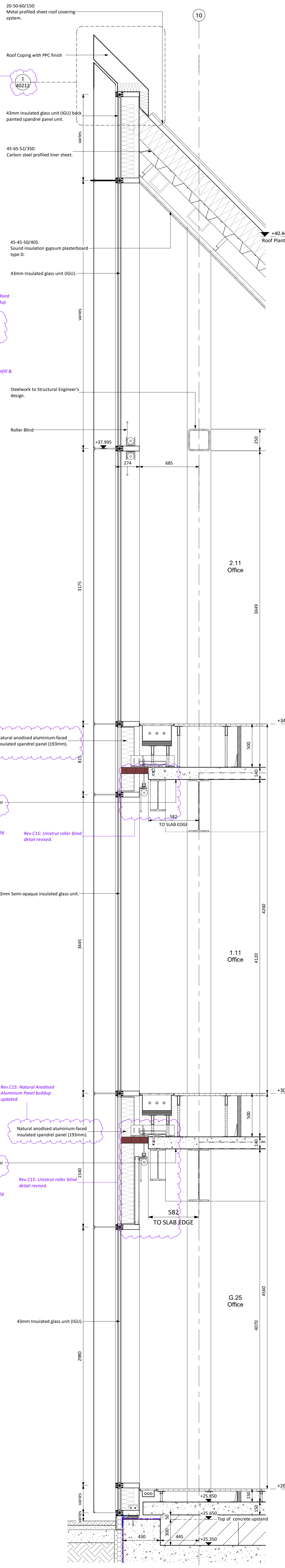
Element	Value
External Walls:	0.20W/m²K
Floor:	0.18W/m²K
Roof:	0.18W/m²K
Windows, roof windows and roof lights:	0.9 W/m²K
Personnel doors:	1.84W/m²K
Air permeability (m³/hr/m² @ 50 Pa)	3



1 Strip Section North-East
1:20



2 Strip Section East
1:20



3 Strip Section South-East
1:20

STATUS	REV	DATE	DESCRIPTION
A	C15	18.10.19	General updates - changes identified where relevant.
A	C10	29.08.19	General updates following FAA workshops
S4	P82	07.12.18	Drawings updated
S4	P58	12.10.18	Revisions made following Stage 4 CMT review
S4	P42	28.08.18	Concrete upstands and ground level transoms revised.
S4	P40	15.08.18	Concrete upstands and ground level transoms revised.
S4	P18	27.07.18	STAGE 4 ISSUE
S1	P33	24.07.18	Final issue for coordination.

CLIENT: **BAM Construction** REVISION: JL
CHECKED BY: CC
ORIGINATOR: 151890

CONSULTANT: **STRIDE TREGLOWN**
www.stride-treglow.com © Stride Treglow Limited 2017

PROJECT: **King's Cross Q1**
Handyside Street
King's Cross Central
London N1C 4AL

DRAWING TITLE: **Strip Sections - North-East_South-East Elevation**

SUITABILITY STATUS: **A : CONSTRUCTION ISSUE** SCALE: **As indicated @ A0**

SITE | PROJ.COLLECT. | ZONE | PROJ.REF | ROLE | ORIGIN. | CLASS. | NUMBER | REVISION
KXC-Q1-ZZ-001-A-STL-21-31003 **C15**