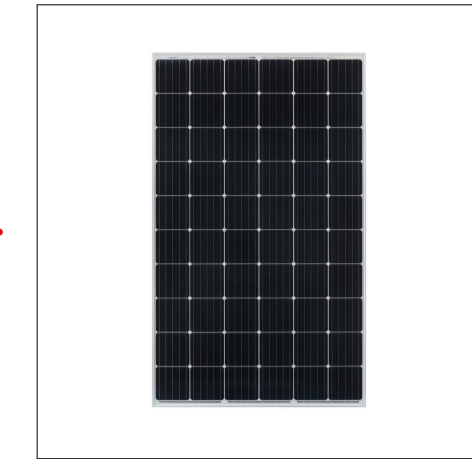
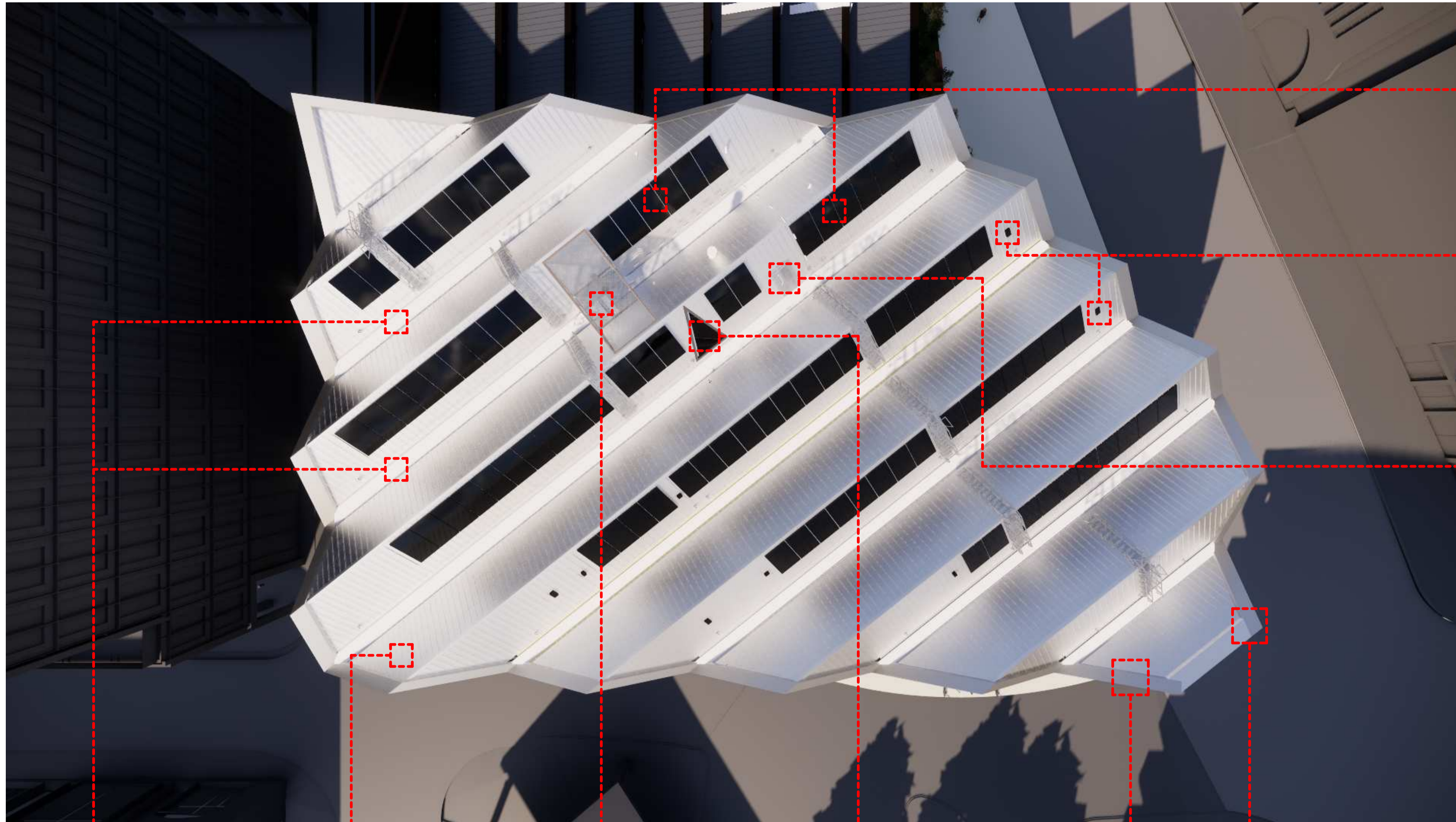


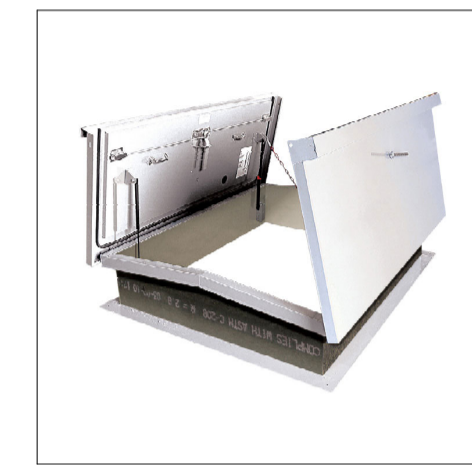
STATUS	REVISION	DATE	DESCRIPTION
S3	P118	02.08.19	First Issue for Review & Comment.
A	C10	29.08.19	Sample notes & images updated.
A	C16	29.10.19	External materials image render updated. Sample notes revised.
A	C17	31.10.19	External material revised.
A	C18	12.11.19	Sample notes & images updated



Photovoltaics
Description:
JA Solar 290W Module Panels
Colour:
Black



Bat / Bird Boxes
Description:
Nestbox Company
Eco Bat Box & Sparrow Terrace Nest Box
Colour:
Black



Roof Hatch
Description:
BilcoType E Roof Hatch-Ladder Access
Colour:
Aluminium – mill finish



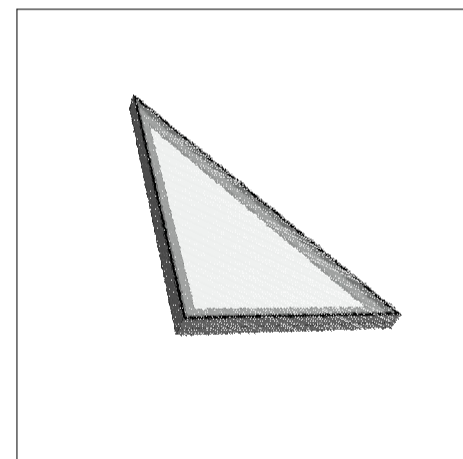
Roof Walkway
Description:
EVOWalk Rooftop Walkway to be installed on standing seam roof
Colour:
Aluminium – mill finish



Roof Standing Seam
Description:
Euroclad Elite PLUS 5 Standing seam over structural deck
Colour:
Aluminium – mill finish
Sample:
Refer to Sample 004



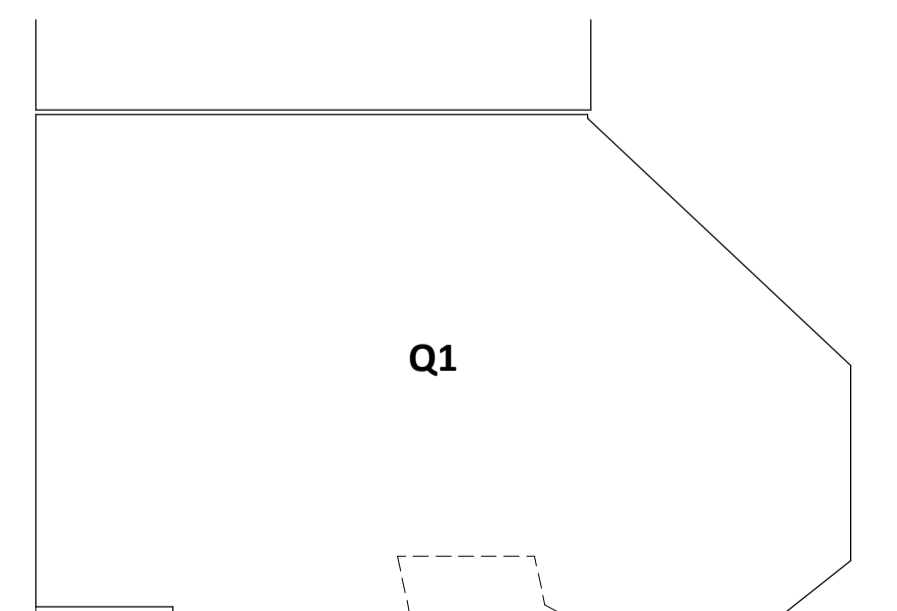
Plant Enclosure Grill
Description:
Metal louvred enclosure
Colour:
Aluminium



Rooflight
Description:
Schuco FWS60 SG Rooflight
Colour:
Aluminium – mill finish



Roof Coping
Description:
3mm Aluminium
Colour:
Natural Anodised
Sample:
Refer to Sample 016



DRAWING NOTES:

- This drawing is to be viewed alongside physical samples which are available on-site.
- Where external finishes are not confirmed (TBC), they are to be submitted in a separate application.