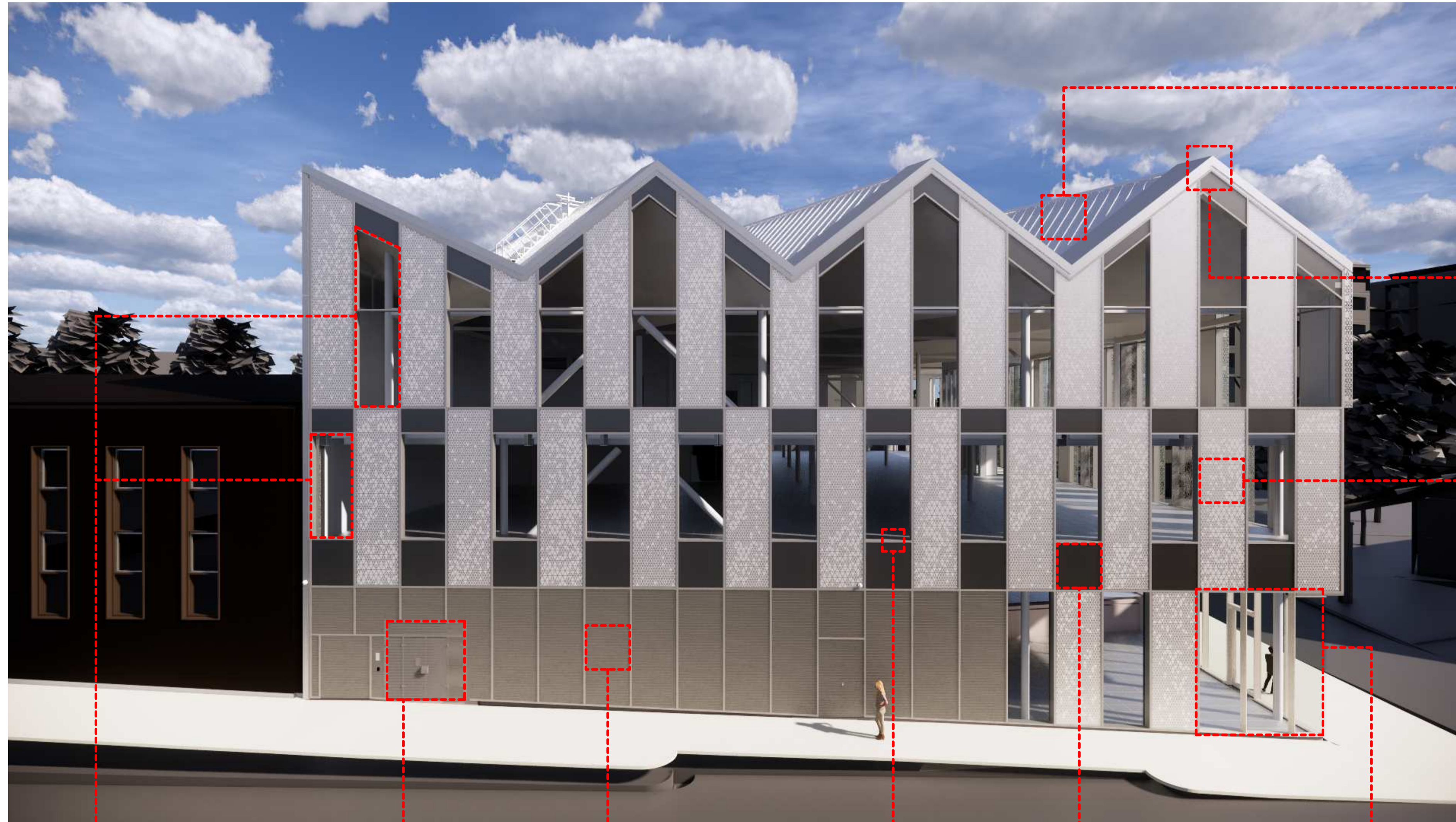
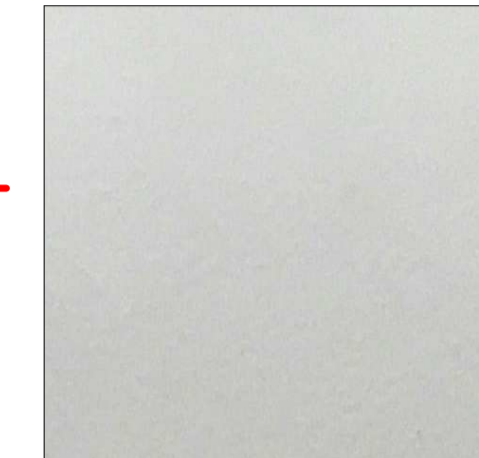


STATUS	REVISION	DATE	DESCRIPTION
S3	P118	02.08.19	First Issue for Review & Comment.
A	C10	29.08.19	Sample notes & images updated.
A	C16	29.10.19	External materials image render updated. Sample notes revised.
A	C17	31.10.19	External material revised.
A	C18	12.11.19	Sample notes & images updated



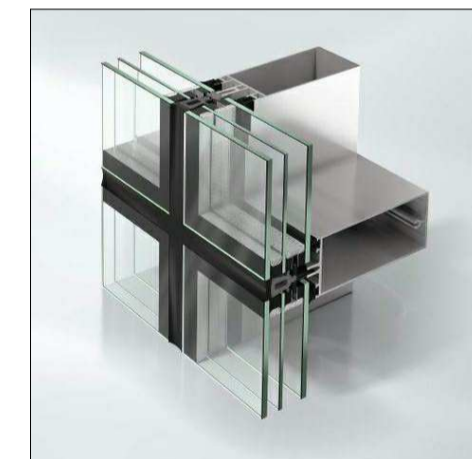
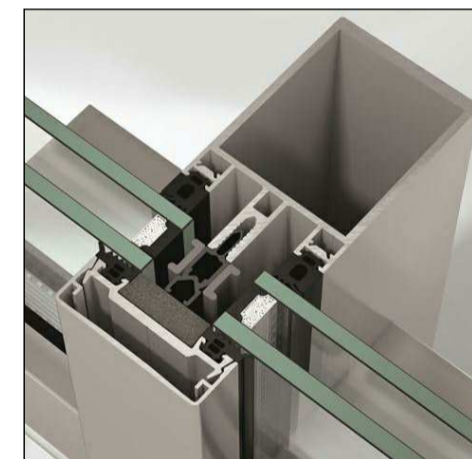
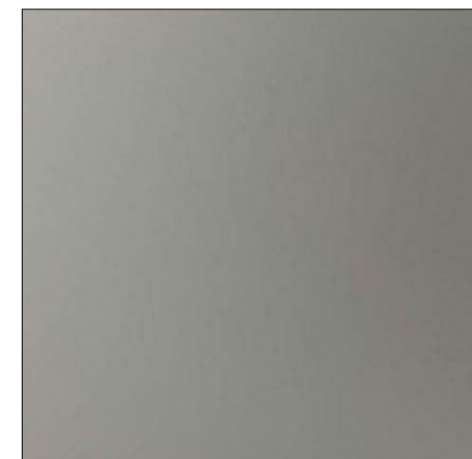
Roof Standing Seam
 Description:
 Euroclad Elite PLUS 5
 Standing seam over structural deck
 Colour:
 Aluminium – mill finish
 Sample:
 Refer to Sample 004



Roof Coping
 Description:
 3mm Aluminium
 Colour:
 Natural Anodised
 Sample:
 Refer to Sample 016



Embossed Aluminium Panel
 Description:
 3mm Aluminium Routed Spandrel Panel
 Colour:
 Natural Anodised
 Sample:
 Refer to Sample 039



Clear Glass – Office
 Description:
 PressGlass 43mm Solar Control Glass (G-value = 0.38)
 Colour:
 Transparent
 Sample:
 Refer to Sample 024

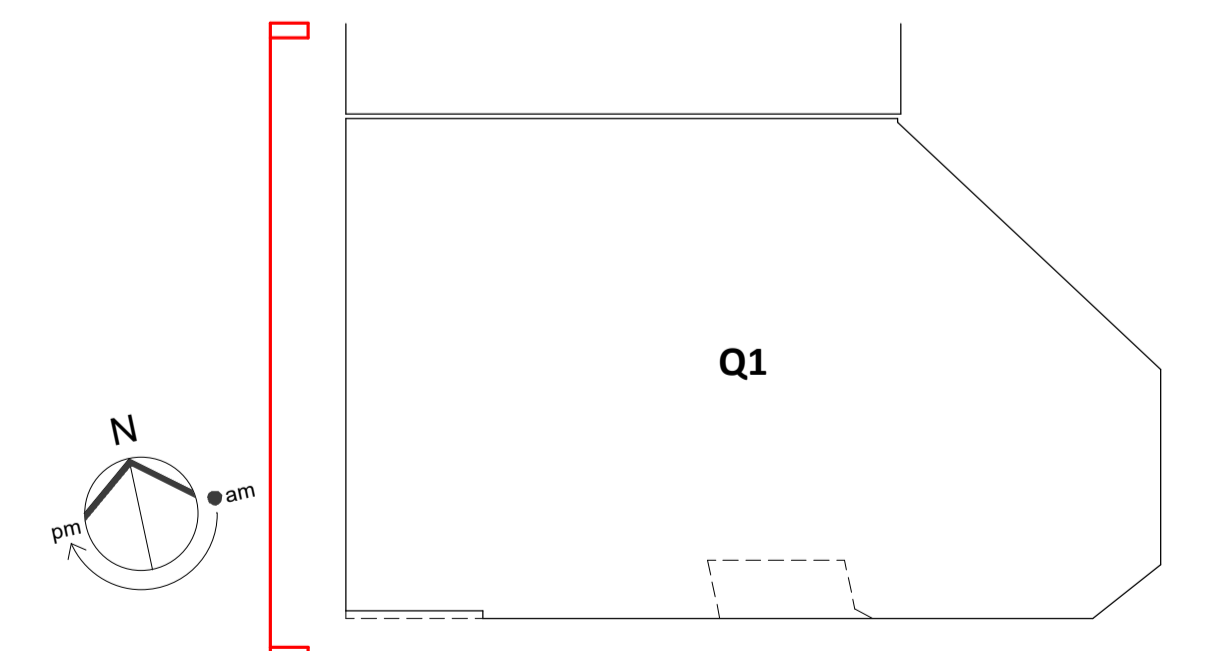
Sub-station door
 Description:
 Sunray louvre door
 Colour:
 Tiger PPC Drylac 68/90510
 Sample:
 Refer to Sample 030

Louvre
 Description:
 AluPlus MLS50-SM Louvre
 Colour:
 Natural Anodised

Curtain Wall System – Office
 Description:
 Schuco FWS60 (Capped)
 Colour:
 Natural Anodised (External)
 White PPC RAL 9010 (Internal)
 Sample:
 Available on site

Spandrel Glass
 Description:
 PressGlass 43mm Insulated Glass Unit
 Colour:
 RAL 7037
 Sample:
 Refer to Sample 011

Curtain Wall System – Retail
 Description:
 Schuco FWS60 SG (Glass-Glass)
 Colour:
 Black Silicone (External)
 White PPC RAL 9010 (Internal)
 Sample:
 Refer to Sample 033



DRAWING NOTES:

- This drawing is to be viewed alongside physical samples which are available on-site.
- Where external finishes are not confirmed [TBC], they are to be submitted in a separate application.