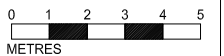
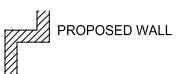




DISCLAIMER:
In accordance with our duties under the Misrepresentation Act 1967 and the Misdescription Act 1991, these details have been prepared in good faith but are not intended to constitute part of an offer of contract or create any contractual relationship. No description or information of any kind provided by CPC London or its Agents, whether written or verbal, contained in these Particulars or elsewhere ("Information") may be relied upon as a statement of representation, warranty or fact. Neither CPC London nor its Agents have any authority to make any representation or warranty and accordingly any information is given entirely without responsibility on the part of CPC London, its Agents or the seller. Any plans, photos, and computer generated images shown are indicative and cannot be guaranteed to represent the complete interiors/exterior of a scheme. Any Areas, measurements or distances given are approximate only. Any products and materials shown or indicated are indicative only and may be subject to variations or change. It is not possible to scale from these drawings. Any reference to alterations of the use of any part of the property is not a statement that any necessary planning, building regulations or other consent has been obtained. These matters must be verified by any buyer/lessee. Any buyer/lessee must satisfy himself by inspection or otherwise as to the correctness of any information given.
© All rights reserved to CPC London.

NOTES:

- PROPERTY 1
- PROPERTY 2
- PROPERTY 3

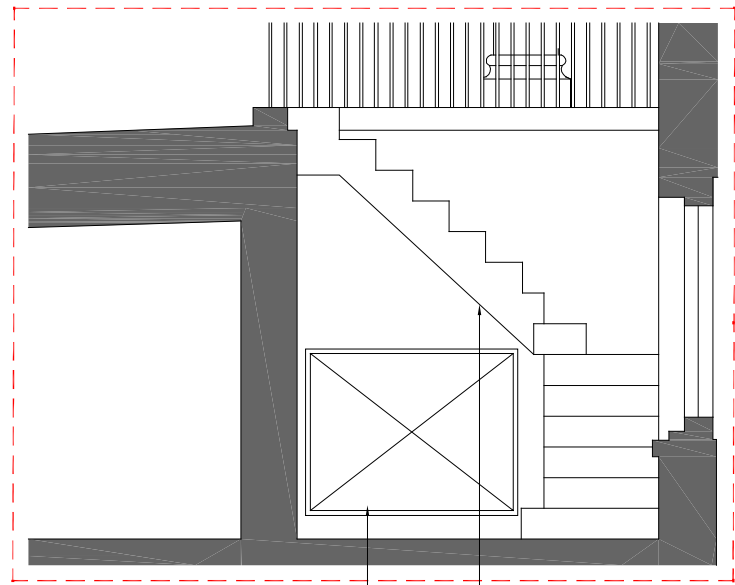
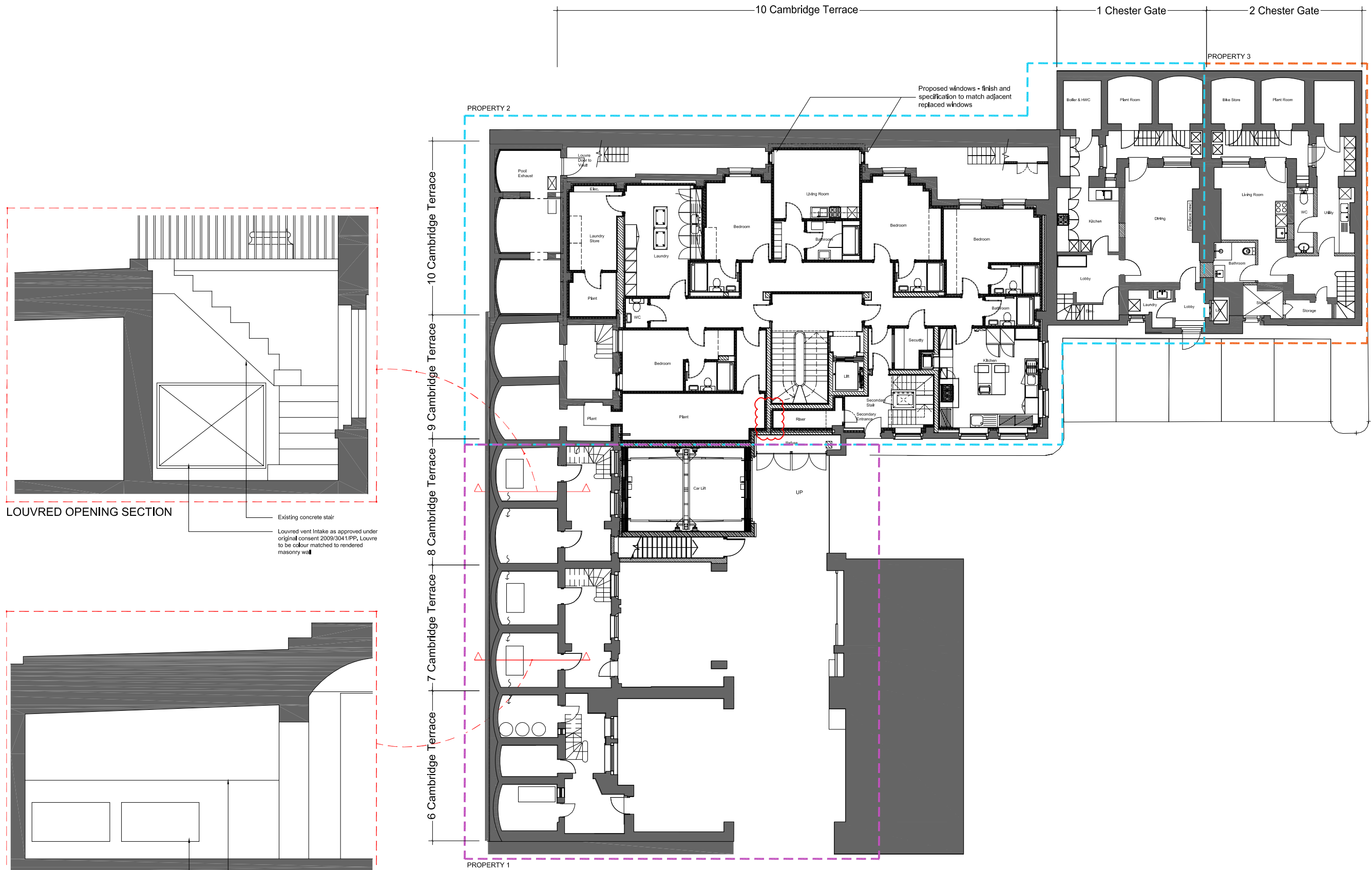


REV. BY: DATE: DESCRIPTION

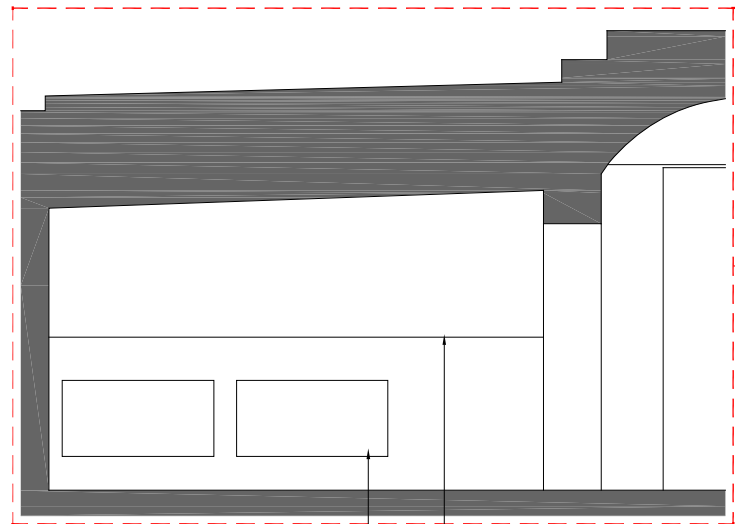
PROJECT CODE:
Project Quad
PROJECT TITLE:
**9-10 Cambridge Terrace
and 1-2 Chester Gate
Regents Park
London NW1**

DRAWING TITLE:
**LOWER GROUND FLOOR
PROPOSED**

DRAWN BY: **BW** CHECKED BY: **TS**
ISSUED FOR:
PLANNING
SCALE: **1:200 @ A3** DATE: **OCT '19**
DRAWING NO. **639-2.002 H** REVISION:



LOUVRED OPENING SECTION
Existing concrete stair
Louvred vent intake as approved under original consent 2009/3041/PP. Louvre to be colour matched to rendered masonry wall



VENT SLOT SECTION
Line indicates existing springing point of arch
Low level vent slots at minimum required size