



Middlesex Hospital Annexe Site
44 Cleveland Street, W1T 4JU

For and on behalf of
Middlesex Annex LLP

Listed Building Workhouse

Listed Building Conditions 4e

Additional Information - Conservation Rooflight Window Detail

Design team

Llewelyn Davies
Temple
Aecom
Arup
Crosby Transport Planning
Urban Counsel
Delva Pateman Redlar
MOLA

Issued - 14-11-2019

Additional Information

Condition 4e - Additional Information

Conservation Rooflight Windows - Specification

Manufacturer: VELUX Company Ltd.

Product reference: GGL centre-pivot roof window, CONSERVATION ROOFLIGHT with recessed flashing & fittings.

- Roof pitch: 40°
- Roof Covering - Slate
- Window - Code: GGL UK08.
- Finishes:
Internal finish: White Painted pine code 2
- External cladding: Black aluminium;
- colour reference RAL Colour 9005
- Glazing: 7021U.
- Glazing Bars - As per roof plan
- Blinds, Awning and Shutter:
Type: DML Blackout blind.
- Operation: Manual
- Energy efficiency installation collars: Insulation Collar – Code BDX 2000.
- Flashing: EDN.

The window will be openable to allow access for cleaning, the alternative would mean access onto the roof for regular maintenance.

The top 2 floors provide duplex apartments, incorporating an openable rooflights would create a stack effect within the apartment, thus pulling colder air from the lower floor into the upper floor creating a cooling effect.

Providing an openable rooflights would reduce the energy use within the apartment and prevent overheating.

Openable rooflights would allow for night time cooling in the summer and as they are predominately located on the West & East roof, this will provide cross ventilation which will further reduce overheating.

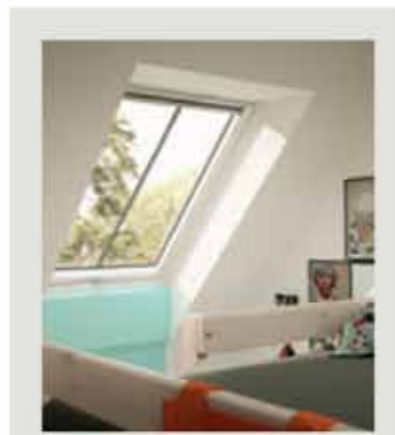
VELUX conservation roof windows

For traditional buildings



When planning dictates that a window of traditional external appearance is required, conservation roof windows should be considered. All of our conservation roof windows have the same technical features of a VELUX roof window but in a traditional black conservation style.

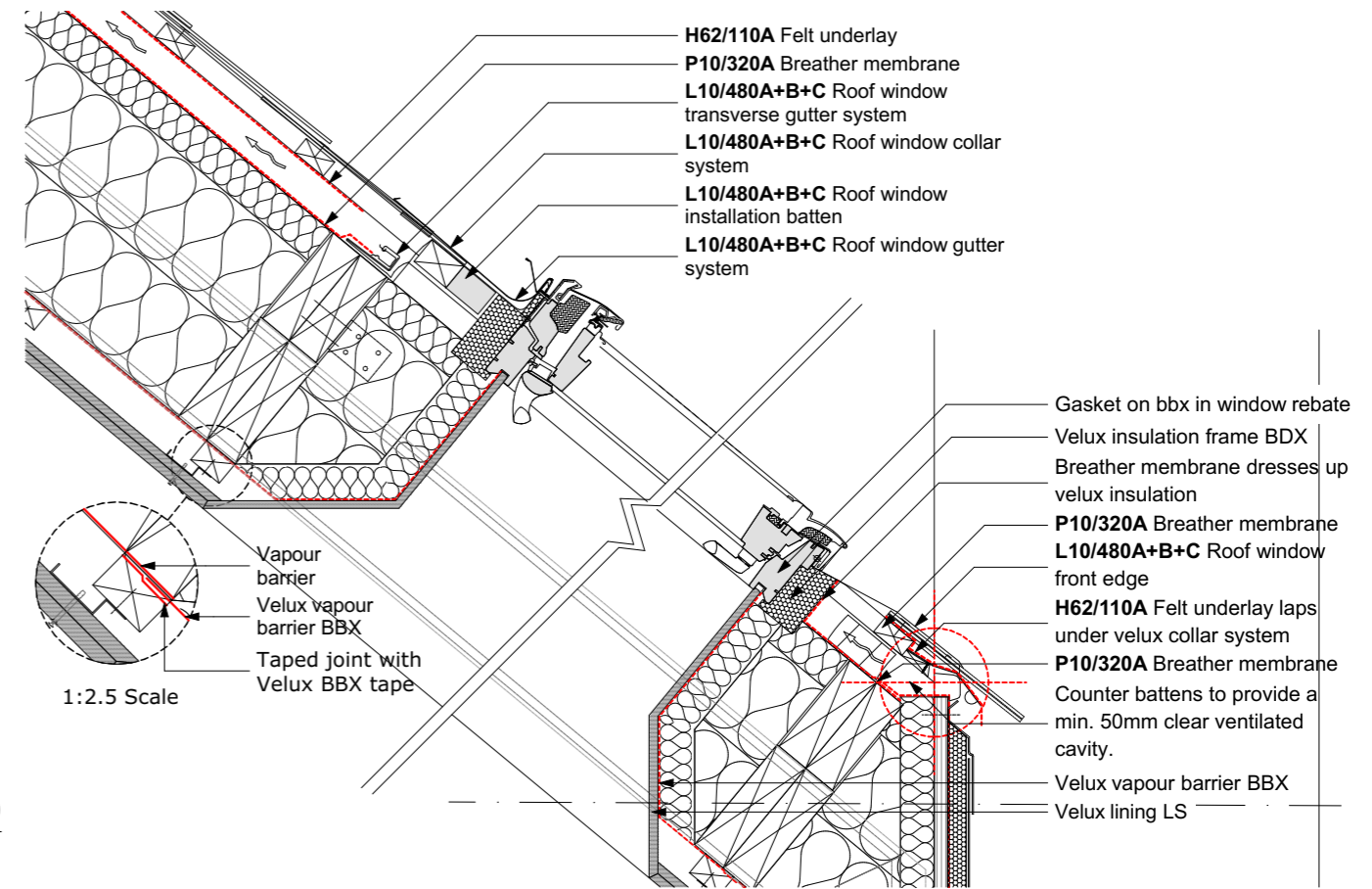
- Available in either centre-pivot or top-hung.
- Black external profiles and glazing bar. In RAL colour 9005.
- Recessed installation for slate and tiled roofs.
- Top-hung roof windows listed below are suitable for emergency escape.
- Other sizes and glazing options available – contact us for further information.



What does a conservation package include?

- Roof window with pre-fitted glazing bar with laminated glazing as standard for safety.
- Recessed flashings available for a more streamlined external appearance
- Insulation collar and underfelt collar provided for a weathertight and energy efficient installation.

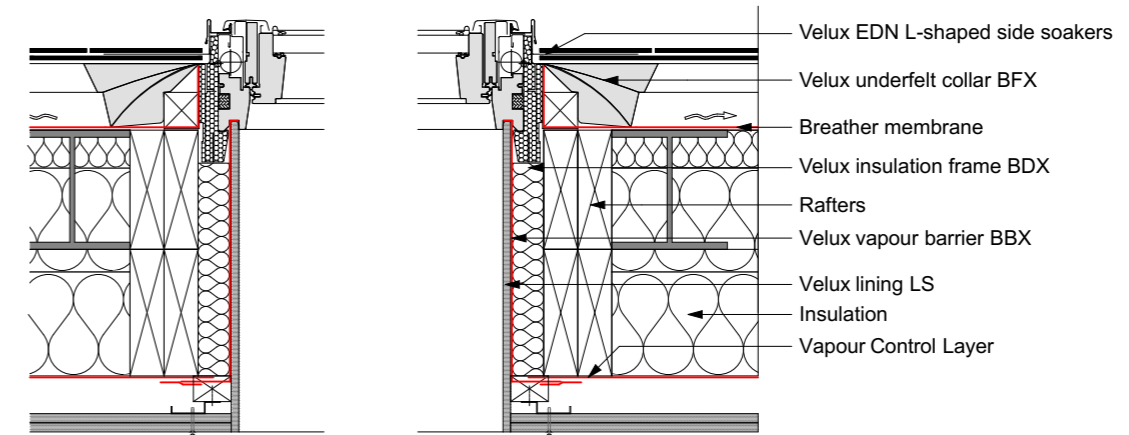
Conservation Rooflight. It is proposed to use a central pivot window to allow access for cleaning & improved ventilation. Depending on the size of rooflight will contain 1 or 2 glazing bars.



D04

ROOF WINDOW HEAD AND SILL

1:10



D02

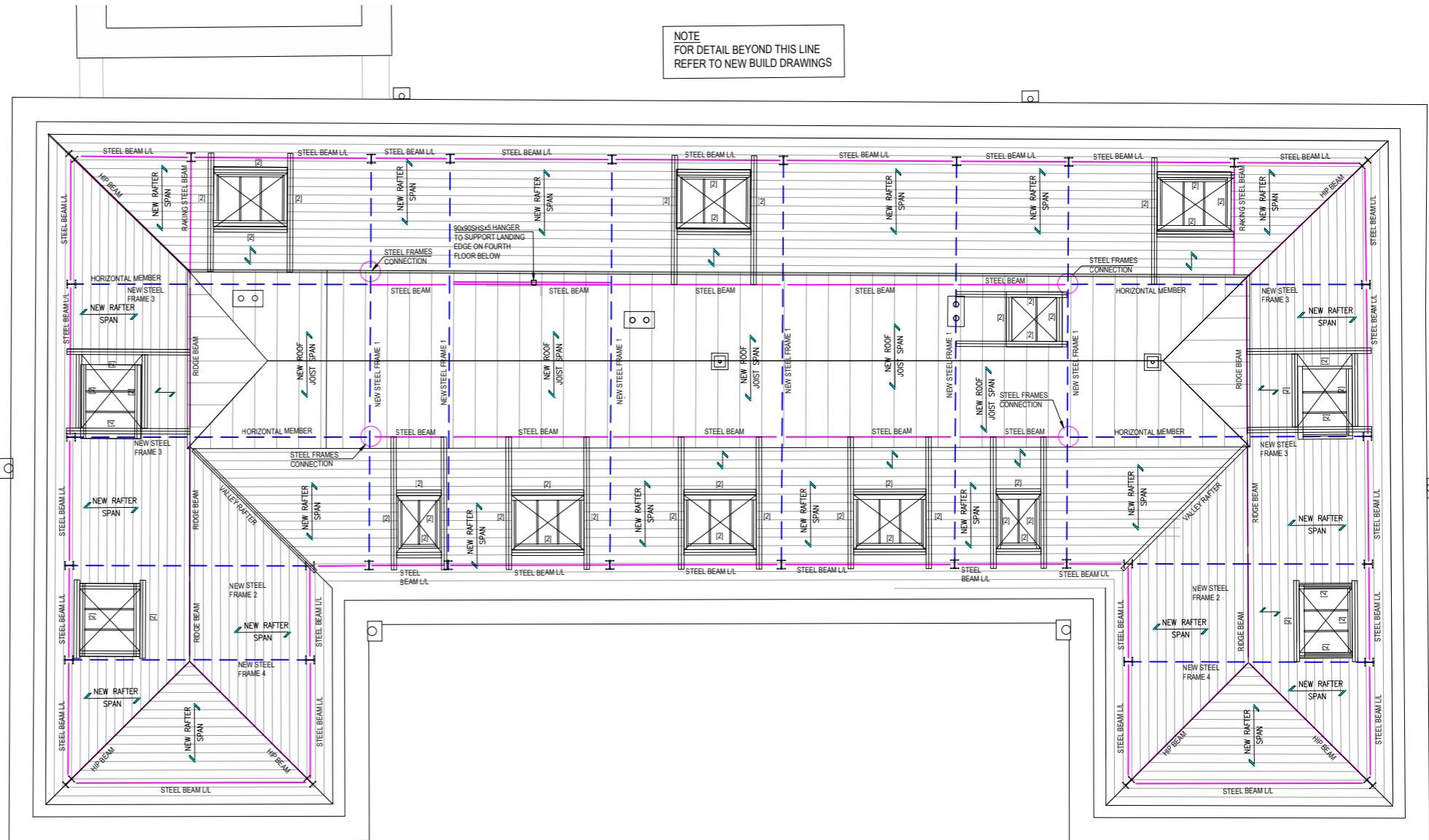
ROOF WINDOW JAMB

1:10

Conservation Rooflight detail showing head, sill & window jamb with recessed fitting.

Condition 4e - Conservation Rooflights with Glazing Bars

NOTE
FOR DETAIL BEYOND THIS LINE
REFER TO NEW BUILD DRAWINGS

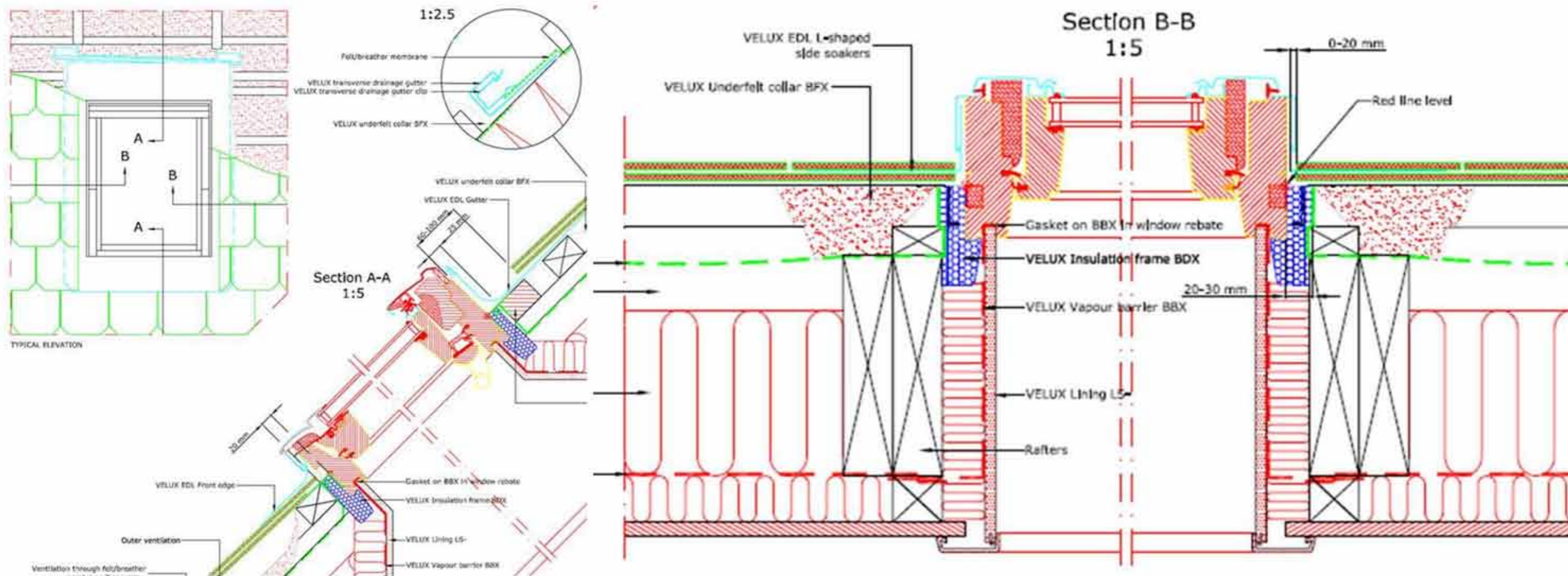


PROPOSED ROOF PLAN
[LEVEL RF]
1:50 @ A1

NOTE
FOR TYPICAL DETAILS AND DETAILS OF
STEEL FRAMES REFER TO DRG. Nos.
MHA-ACM-XX-XX-DE-S-00001 TO 00003.
MHA-ACM-WH-XX-DE-S-00001 TO 00003.

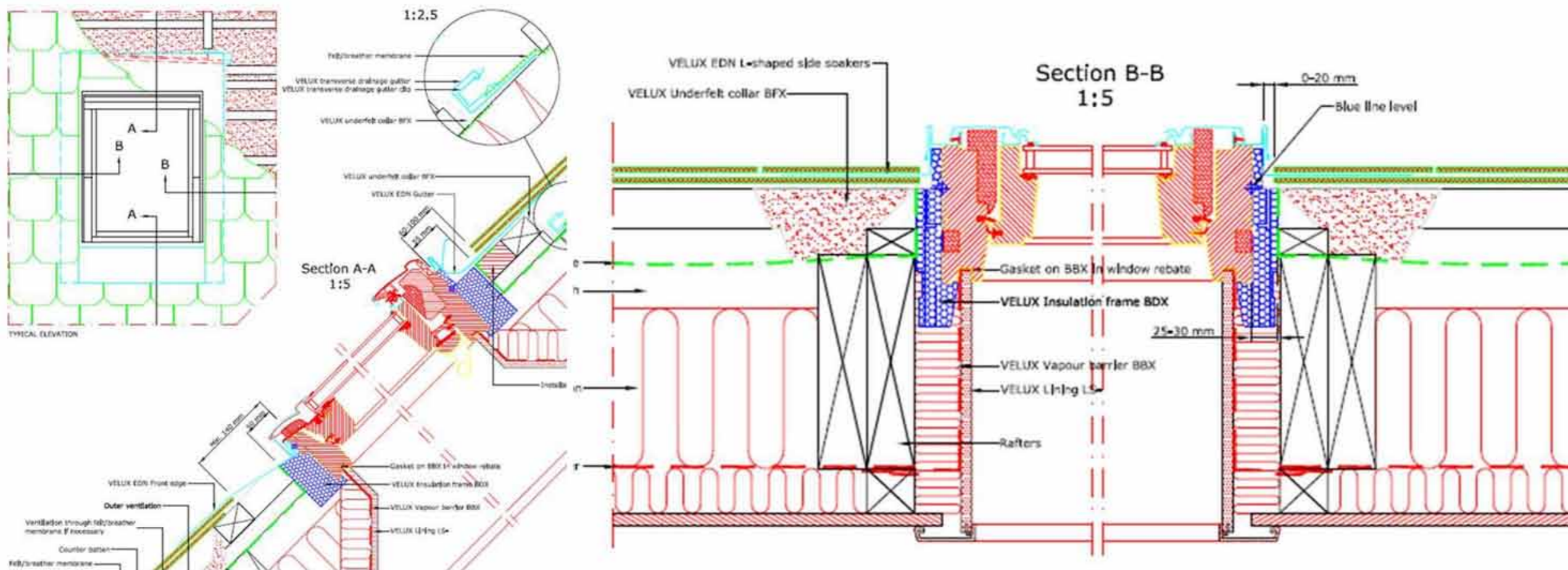
KEY	
	DENOTES NEW BRICKWORK TO MATCH EXISTING AND TO BE FULLY TOOTHED INTO EXISTING.
	DENOTES NEW STEEL BEAMS. 254x146 UB 43 RIDGE MEMBERS. UNO. 203x133 UB 30 HP MEMBERS UNLESS NOTED OTHERWISE. REFER TO FRAME DETAILS FOR FURTHER INFORMATION.
	DENOTES EXISTING STEEL BEAMS.
	DENOTES NEW STEEL FRAME. FOR DETAILS OF FRAMES REFER TO DRAWINGS MHA-ACM-XX-XX-DE-S-00003, 00004 & 00005
	DENOTES EXTENT OF DEMOLITION
	DENOTES NEW PRESTRESSED CONCRETE LINTELS
	DENOTES NEW 200x50 TIMBER JOISTS @ 400 CTRS
	DENOTES NEW MASS CONCRETE PADSTONE. REFER TO DETAIL 2.
	DENOTES NEW 175x50 TIMBERS RAFTERS @ 400 CTRS

Condition 4e - Conservation Rooflight Windows details - Standard & Recessed



Standard Rooflight Detail

Not used on the Listed Building



Recessed Rooflight Detail

Proposed detail for the listed building as illustrated in the submitted pack of drawings.

Drawing reference: BPD-LDW-WH-ZZ-DR-A-303001 ROOF DETAILS - SHEET 1_C1.pdf

As shown on page 3

LLEWELYN
DAVIES