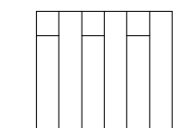
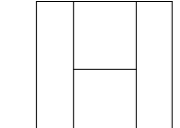
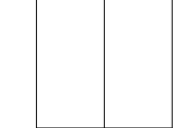
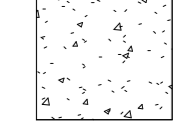
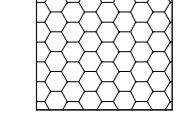

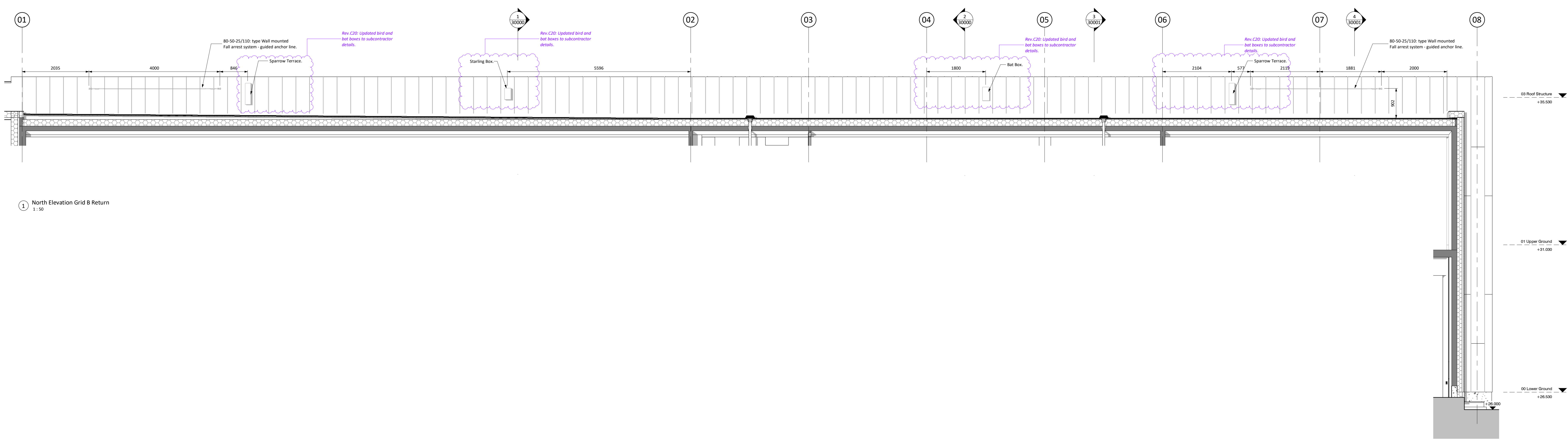


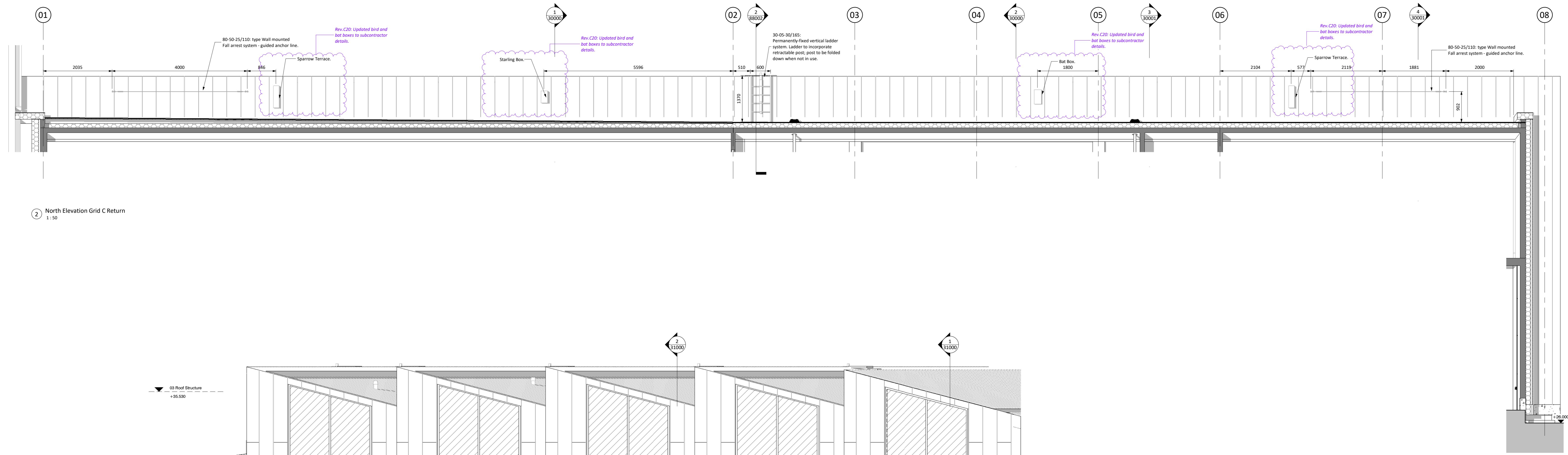
- CLADDING TYPE KEY**
-  Vertical Accoya Timber Cladding
 -  Zinc Standing Seam Cladding
 -  Trimotherm Vertical Facade Panels
 -  Concrete Plinth
 -  Bitumen Faced XPS Insulation Boards
 -  Glazing to perform as barrier guarding in accordance with BS 6180

Drawing Note:

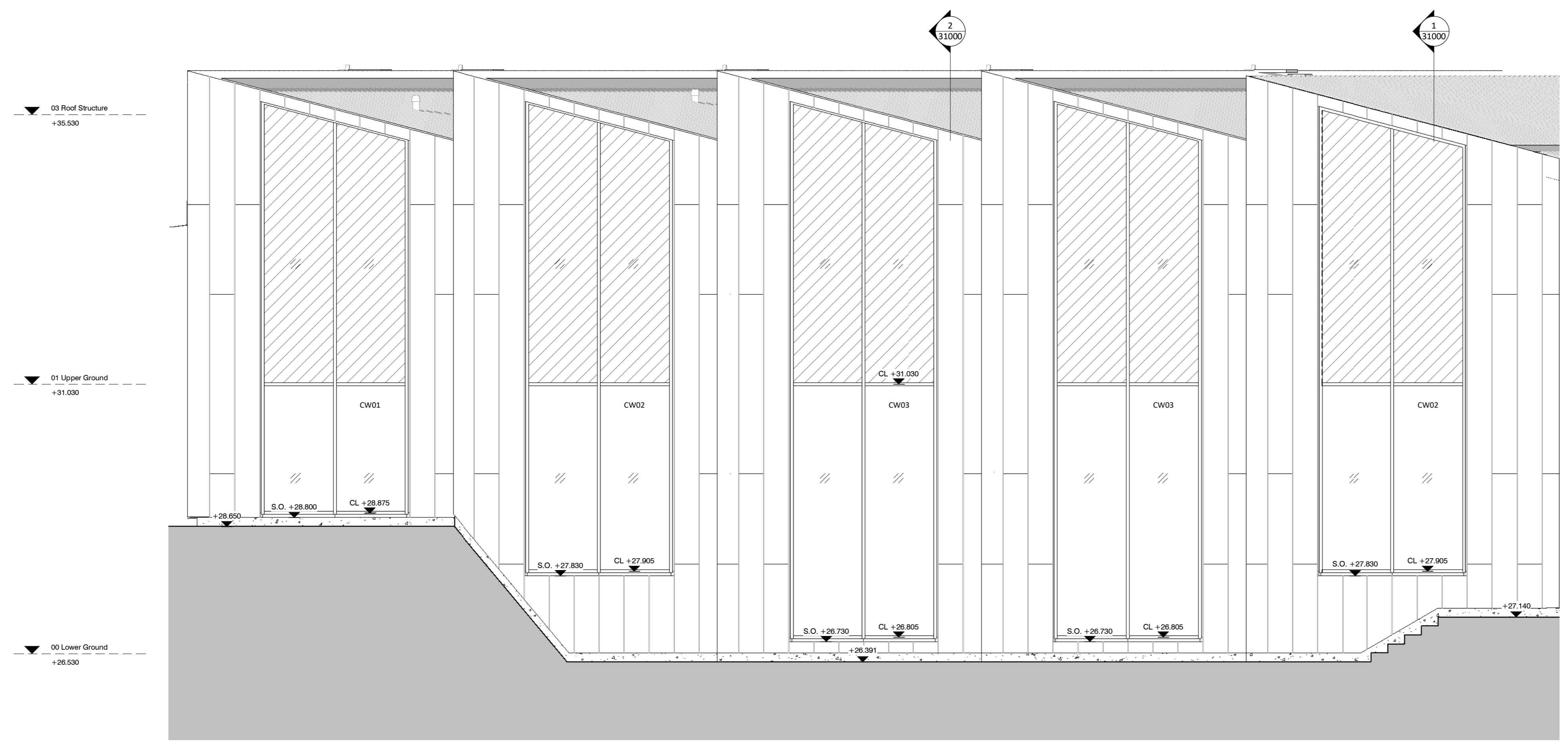
- All operable windows to be equipped with actuators as part of facade consultant's package.



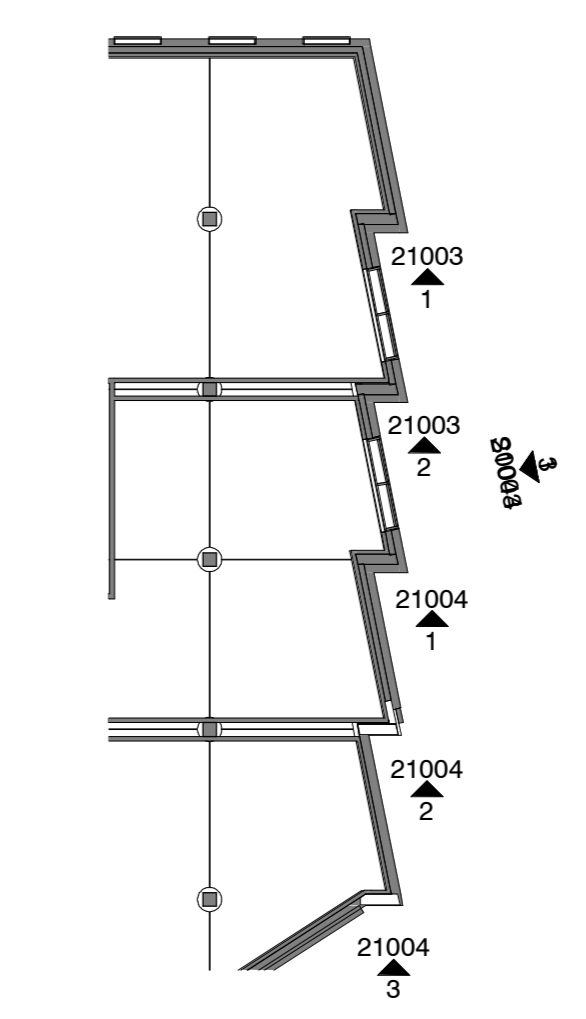
1 North Elevation Grid B Return
1:50



2 North Elevation Grid C Return
1:50



3 North Elevation Grids A - F
1:50



| STATUS | REV | DATE | DESCRIPTION | REVISOR |
|--------|-----|----------|---|---------|
| A | C20 | 13.11.19 | CONSTRUCTION ISSUE - Planning condition update | AS |
| A | C12 | 03.08.19 | CONSTRUCTION ISSUE: issued as part of package | AS |
| A | C01 | 26.03.19 | CONSTRUCTION ISSUE: Changes identified where relevant. | AS |
| S4 | P56 | 21.05.18 | Added operable and barrier guarding window requirements | CC |
| S4 | P47 | 16.01.17 | STAGE 4 ISSUE: Added Bird and Bat Boxes | CC |
| S4 | P36 | 25.11.16 | STAGE 4 ISSUE: For information | CC |
| S1 | P31 | 14.11.16 | First Issue: For Coordination | CC |

CONSULTANT
STRIDE TREGLOWN
www.stridetreglown.com © Stride Treglown Limited 2017
PROJECT
King's Cross Q2
King's Cross Q2 Site

DRAWING TITLE
North Elevation

| SUITABILITY STATUS | SCALE |
|---|-------------------|
| A : CONSTRUCTION ISSUE | As indicated @ A0 |
| SITE PROJ.COLLECT. ZONE PROJ.REF ROLE ORIGIN. CLASS. NUMBER | REVISION |
| KXC-Q2-ZZ-001-A-STL-21-21003 | C20 |