



# Waste Storage and Collection Strategy at 22 Tower Street, London WC2H 9NS

**By:** AC  
**Ref:** 13139 – Waste Strategy October 2019  
**Date:** 04/10/19

6 New Bridge Street  
London EC4V 6AB  
T: 020 7489 0213  
F: 020 7248 4743  
E: info@dwdllp.com  
W: dwdllp.com

- 
1. This Waste Strategy Note contains the details which the occupier of the development at 22 Tower Street, London WC2H 9NS, will adhere to regarding the storage and collection of waste generated at the development.
  2. This Waste Strategy is submitted to the London Borough of Camden in connection with application ref: 2019/0004/P for:

*“erection of a first floor front and side extension, internal and external alterations and replacement of rear conservatory with a single storey rear extension”*

## Waste Storage Strategy

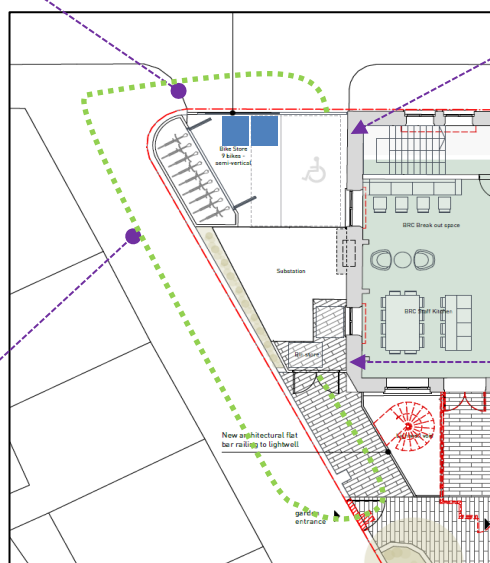
3. The development will be occupied in its entirety by B1(a) offices totalling 1,890sq.m which is 10sq.m less than the existing arrangement of B1(a) office floorspace through the loss of small areas of floorspace in various locations throughout the building. Waste storage will be provided by 2x 1,100L Eurobins which, whilst empty, will be stored in the daytime to the rear of the building in a dedicated and secure enclosure. That storage enclosure has capacity for one off bulky refuse storage and smaller bins if required.
4. Toward the end of the working day, building management will transfer the empty bins via Tower Court to a holding area at the front of the building to occupy the disabled parking bay. The secure gates will ensure that access to the bins is restricted.
5. Building management will transfer refuse from internal bins and storage into the 1,100L Eurobins in readiness for those bins to be collected later that day or in the early hours the following day. Following collection, building management will transfer the now empty bins back to the secure storage area, via Tower Court.
6. The pathway between the front and rear storage areas is level. Tower Court itself is paved in flagstones which are level with flush grouting. The pathway within the rear courtyard of 22 Tower Street will be replaced and level with flush grouting (please refer to the Design and Access Statement for more details).
7. A storage and route map is annotated on the proposed ground floor plan over page.



2 Photo of flush transfer from Tower Street to Tower Court (Google Street View)



2 Photo showing flush paving along Tower Court (Google Street View)



Secure storage location prior to collection and during internal collection. Bins to be stored in the approximate area shaded blue.

Daytime secure storage location for 2x 1,100L empty bins

Denotes transfer path of moving emptied bins

### Nuisance Mitigation

8. To ensure that the storage, movement and collection of refuse does not cause nuisance to neighbouring amenity the following measures will be employed:
  - Where possible and required rubber castors can be installed on the Eurobins.
  - The number of bins transferred will be kept to a minimum and efforts to reduce waste generation will be promoted through the BRC's internal policies.
  - The transfer of bins will only take place between 07:00 and 19:00 Monday to Saturday.
  - Waste collection will be scheduled within the same time parameter, likely to be in the early morning in line with current local arrangements.
  - Eurobin lids will be kept shut at all times and the secure storage room will be ventilated to prevent odour build-up.

### Collection Contractor

9. The applicant has consulted with Veolia Commercial Waste contractor who has confirmed that collection for this area usually takes place between 06:00 to 08:00 and during the evening at 18:00 to 20:00. Some streets in the area have a midnight collection although the applicant does not propose to adopt a midnight collection

time. Veolia confirmed that collection times can be agreed at greater frequencies at times throughout the day.