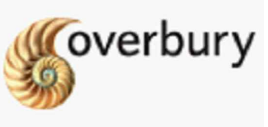
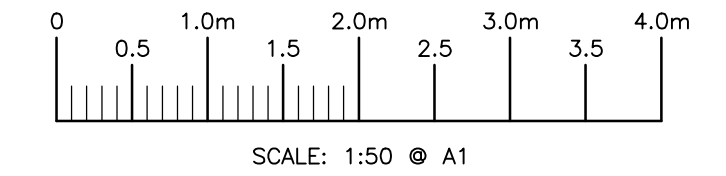


NOTE: ACCESS PANEL LOCATIONS TO BE AGREED WITH ARCHITECT
ACCESS DOORS TO BE PROVIDED TO SVP'S WHERE INDICATED
AND TO BE CO-ORDINATED WITH ARCHITECTS ACCESS PANEL.
ACCESS PANEL TO HAVE 150MM X150MM CLEAR OPENING

- NOTES:
1. THIS DRAWING IS THE PROPERTY OF HITEK CONSULTANTS LIMITED AND IS PROTECTED UNDER THE COPYRIGHTS DESIGNS AND PATENTS ACT 1988. ALL RIGHTS RESERVED. THIS DRAWING IS ISSUED ON CONDITION THAT IT IS NOT COPIED, REPRINTED OR REPRODUCED, WHOLLY OR IN PART, WITHOUT THE CONSENT OF HITEK CONSULTANTS LIMITED.
 2. DO NOT SCALE FROM THIS DRAWING. ALL DIMENSIONS AND SETTING OUT TO BE TAKEN FROM ARCHITECTURAL DRAWINGS.
 3. THIS DRAWING SHALL BE READ IN CONJUNCTION WITH THE ARCHITECTS, STRUCTURAL ENGINEERS AND ALL OTHER SERVICES DRAWINGS AND SPECIFICATIONS.
 4. THE INFORMATION CONTAINED ON THIS DRAWING HAS BEEN PRODUCED FROM A NON DESTRUCTIVE VISUAL SURVEY AND RECORD DOCUMENTATION ONLY. IT IS THE CONTRACTORS RESPONSIBILITY TO VERIFY ALL INFORMATION PRIOR TO ANY SERVICES BEING ISOLATED AND STRIPPED OUT.
 5. THE CONTRACTOR SHALL CO-ORDINATE ALL SERVICES ACCESS POSITIONS WITH OTHER TRADES AS REQUIRED.
 6. THE CONTRACTOR SHALL ENSURE ALL SERVICES PENETRATING FIRE COMPARTMENTS AND SMOKE CURTAINS ARE FIRE STOPPED TO THE SAME STANDARD AS THE BUILDING ELEMENT THEY PENETRATE.
 7. ALL DIMENSIONS ARE IN MILLIMETERS.
 8. THE USE OF SHORT RADIUS OR 90° BENDS FOR CHANGES IN DIRECTION IS NOT PERMITTED; ONLY LONG OR MEDIUM RADIUS 45° BENDS SHALL BE USED. ALL JUNCTIONS SHALL BE 45°.
 9. THE SANITARY DRAINAGE DESIGN AND INSTALLATION SHALL BE IN STRICT ACCORDANCE WITH BS. EN. 12056-2 AND BUILDING REGULATIONS APPROVED DOCUMENT H.
 10. DRAINAGE PIPEWORK SHALL BE INSTALLED IN CAST IRON AND ACOUSTICALLY INSULATED AND BOXED OUT.
 11. WHERE FOUL DRAINAGE PIPEWORK OFFSETS, PIPEWORK SHALL BE SET TO FALL AT 1:80 UNLESS OTHERWISE STATED ON THE DRAWINGS.
 12. COMMON VENT PIPEWORK SHALL BE SET TO FALL AT 1:100 UNLESS OTHERWISE STATED ON THE DRAWINGS.
 13. FOR BELOW GROUND DRAINAGE DETAILS REFER TO STRUCTURAL ENGINEERS DRAWINGS AND SPECIFICATION.

- LEGEND:
- AAV – AUTOMATIC AIR ADMITTANCE VALVE
 - AFL – ABOVE FLOOD LEVEL
 - AD – ACCESS DOOR
 - AP – ACCESS PANEL
 - ASP – ANTI-SYPHON PIPE
 - DP – DRAIN POINT
 - DW – DISHWASHER
 - CE – CLEANING EYE
 - C/W – COMPLETE WITH
 - L/L – LOW LEVEL
 - M/L – MID LEVEL
 - H/L – HIGH LEVEL
 - RE – RODDING EYE
 - S – SINK
 - SHW – SHOWER
 - SVP – SOIL VENT PIPE
 - SS – STUB STACK
 - SP – SOIL PIPE
 - TB – TO BELOW
 - WHB – WASH HAND BASIN
 - WF – WASTE FLOAT
 - W/M – WASHING MACHINE



FOR TENDER ONLY

T1	21.10.19	TENDER ISSUE	CAM	FMc
Rev	Date	Details	By	Chd



Hitek Consultants Ltd
Chartered Building Services Consulting Engineers
The Stables
Parsonage Farm
Hollow Hill Lane
Iver, Bucks
SL0 0JV

T 01753 650 310
F 0844 880 5702
E info@hitekconsultants.co.uk
cad@hitekconsultants.co.uk
www.hitekconsultants.co.uk

Project
**36 - 38 GORDON SQUARE
LONDON
SEPP REFURBISHMENT WORKS**

Client
UNIVERSITY COLLEGE LONDON

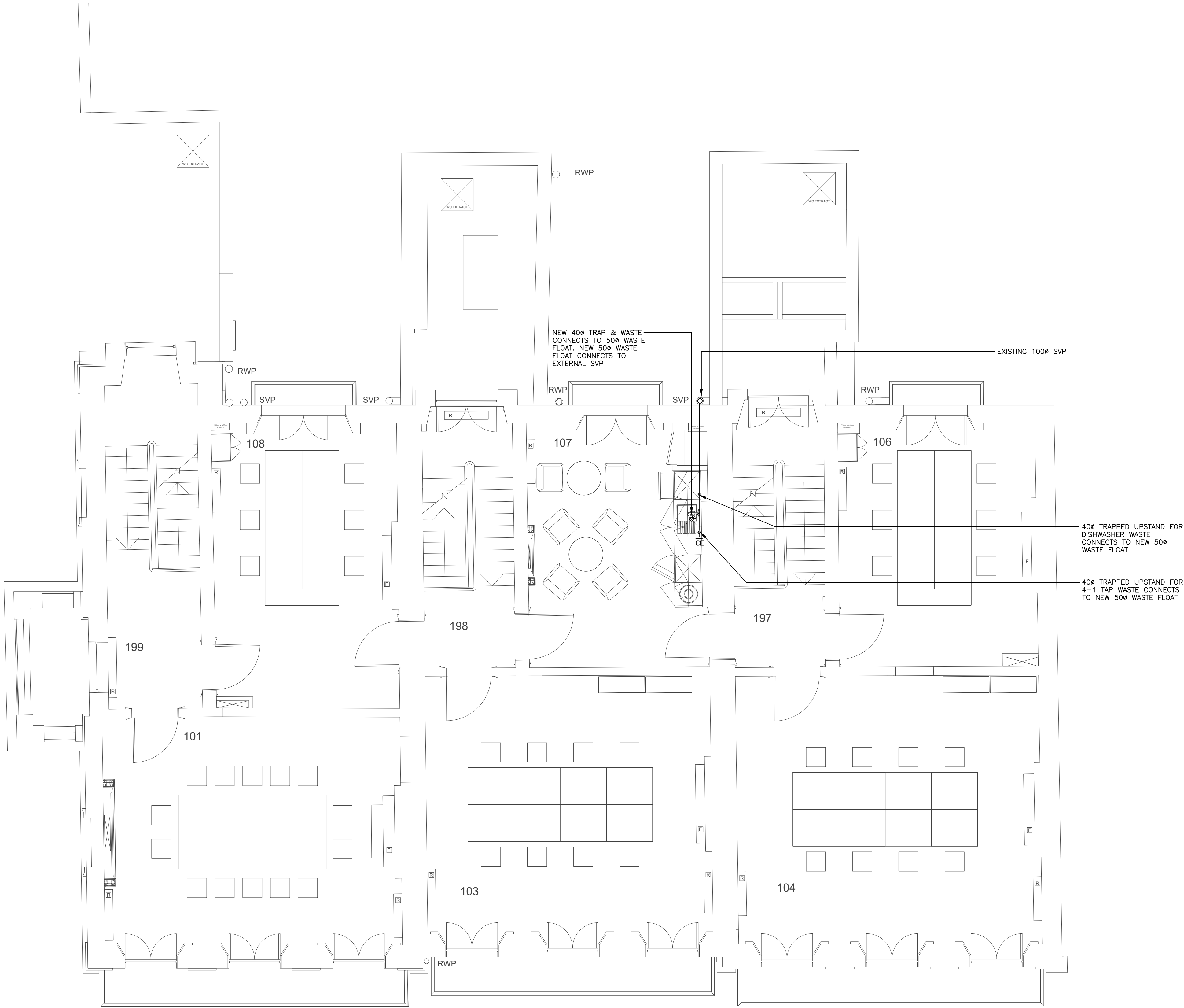
Architect
DIVERSE INTERIOR ARCHITECTURE

Title
**STAGE 4 GROUND FLOOR. PROPOSED
ABOVE GROUND DRAINAGE
LAYOUT**

Scale 1:50 @ A1	Drawing no. 5973-00-PS-1002
Date SEPT 2019	Revision T1
Designed IM	Cad ref 5973-00-PS-1002-T1
Drawn CAM	Checked DTS

COPYRIGHT NOTICE
THIS DRAWING REMAINS THE PROPERTY OF HITEK CONSULTANTS LIMITED. COPIES OF THIS DRAWING OR PARTS THEREOF ARE PROHIBITED WITHOUT EXPRESS PERMISSION

NOTE: ACCESS PANEL LOCATIONS TO BE AGREED WITH ARCHITECT
ACCESS DOORS TO BE PROVIDED TO SVP'S WHERE INDICATED
AND TO BE CO ORDINATED WITH ARCHITECTS ACCESS PANEL
ACCESS PANEL TO HAVE 150MM X150MM CLEAR OPENING



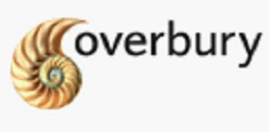
- NOTES:
- THIS DRAWING IS THE PROPERTY OF HITEK CONSULTANTS LIMITED AND IS PROTECTED UNDER THE COPYRIGHTS DESIGNS AND PATENTS ACT 1988. ALL RIGHTS RESERVED. THIS DRAWING IS ISSUED ON CONDITION THAT IT IS NOT COPIED, REPRINTED OR REPRODUCED, WHOLLY OR IN PART, WITHOUT THE CONSENT OF HITEK CONSULTANTS LIMITED.
 - DO NOT SCALE FROM THIS DRAWING. ALL DIMENSIONS AND SETTING OUT TO BE TAKEN FROM ARCHITECTURAL DRAWINGS.
 - THIS DRAWING SHALL BE READ IN CONJUNCTION WITH THE ARCHITECTS, STRUCTURAL ENGINEERS AND ALL OTHER SERVICES DRAWINGS AND SPECIFICATIONS.
 - THE INFORMATION CONTAINED ON THIS DRAWING HAS BEEN PRODUCED FROM A NON DESTRUCTIVE VISUAL SURVEY AND RECORD DOCUMENTATION ONLY. IT IS THE THE CONTRACTORS RESPONSIBILITY TO VERIFY ALL INFORMATION PRIOR TO ANY SERVICES BEING ISOLATED AND STRIPPED OUT.
 - THE CONTRACTOR SHALL CO-ORDINATE ALL SERVICES ACCESS POSITIONS WITH OTHER TRADES AS REQUIRED.
 - THE CONTRACTOR SHALL ENSURE ALL SERVICES PENETRATING FIRE COMPARTMENTS AND SMOKE CURTAINS ARE FIRE STOPPED TO THE SAME STANDARD AS THE BUILDING ELEMENT THEY PENETRATE.
 - ALL DIMENSIONS ARE IN MILLIMETERS.
 - THE USE OF SHORT RADIUS OR 90° BENDS FOR CHANGES IN DIRECTION IS NOT PERMITTED; ONLY LONG OR MEDIUM RADIUS 45° BENDS SHALL BE USED. ALL JUNCTIONS SHALL BE 45°.
 - THE SANITARY DRAINAGE DESIGN AND INSTALLATION SHALL BE IN STRICT ACCORDANCE WITH BS. EN. 12056-2 AND BUILDING REGULATIONS APPROVED DOCUMENT H.
 - DRAINAGE PIPEWORK SHALL BE INSTALLED IN CAST IRON AND ACOUSTICALLY INSULATED AND BOXED OUT.
 - WHERE FOUL DRAINAGE PIPEWORK OFFSETS, PIPEWORK SHALL BE SET TO FALL AT 1:80 UNLESS OTHERWISE STATED ON THE DRAWINGS.
 - COMMON VENT PIPEWORK SHALL BE SET TO FALL AT 1:100 UNLESS OTHERWISE STATED ON THE DRAWINGS.
 - FOR BELOW GROUND DRAINAGE DETAILS REFER TO STRUCTURAL ENGINEERS DRAWINGS AND SPECIFICATION.

LEGEND:

AAV – AUTOMATIC AIR ADMITTANCE VALVE
AFL – ABOVE FLOOD LEVEL
AD – ACCESS DOOR
AP – ACCESS PANEL
ASP – ANTI-SYPHON PIPE
DP – DRAIN POINT
DW – DISHWASHER
CE – CLEANING EYE
C/W – COMPLETE WITH
L/L – LOW LEVEL
M/L – MID LEVEL
H/L – HIGH LEVEL
RE – RODDING EYE
S – SINK
SHW – SHOWER
SVP – SOIL VENT PIPE
SS – STUB STACK
SP – SOIL PIPE
TB – TO BELOW
WHB – WASH HAND BASIN
WF – WASTE FLOAT
W/M – WASHING MACHINE

0 0.5 1.0m 1.5 2.0m 2.5 3.0m 3.5 4.0m

SCALE: 1:50 @ A1



FOR TENDER ONLY

T1	21.10.19	TENDER ISSUE	CAM	FMc
Rev	Date	Details	By	Chd

Hitek Consultants Ltd
Chartered Building Services Consulting Engineers
The Stables
Parsonage Farm
Hollow Hill Lane
Iver, Bucks
SL0 0JW

T 01753 650 310
T 0844 880 5701
F 0844 880 5702
E info@hitekconsultants.co.uk
cad@hitekconsultants.co.uk
www.hitekconsultants.co.uk

Project

**36 - 38 GORDON SQUARE
LONDON
SEPP REFURBISHMENT WORKS**

Client

UNIVERSITY COLLEGE LONDON

Architect

DIVERSE INTERIOR ARCHITECTURE

Title

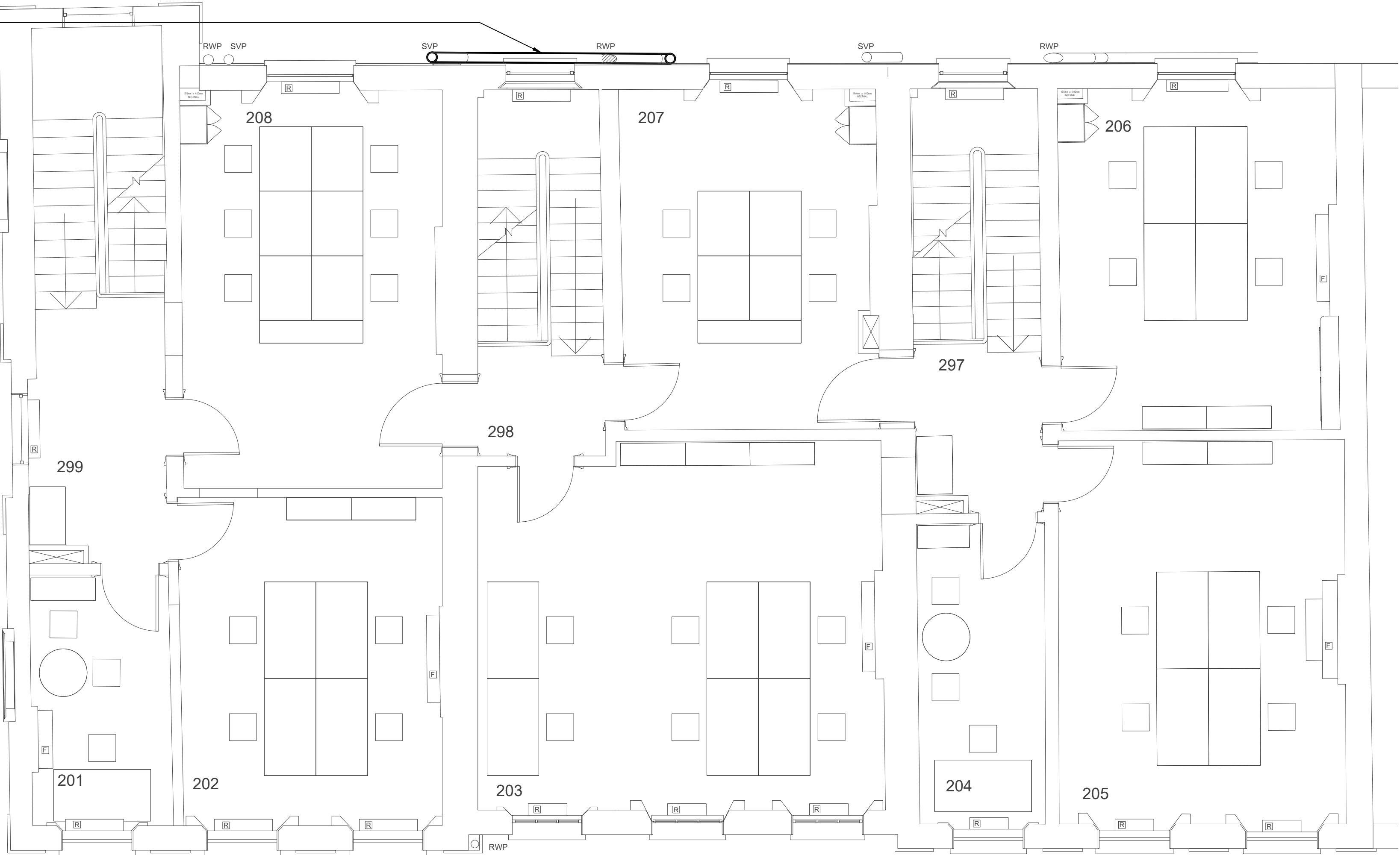
**STAGE 4 FIRST FLOOR. PROPOSED
ABOVE GROUND DRAINAGE
LAYOUT**

Scale	1:50 @ A1	Drawing no.	5973-01-PS-1003
Date	SEPT 2019	Revision	T1
Designed	IM	Cad ref	5973-01-PS-1003-T1
Drawn	CAM	Checked	DTS

COPYRIGHT NOTICE
THIS DRAWING REMAINS THE PROPERTY OF HITEK CONSULTANTS LIMITED. COPIES OF THIS DRAWING OR PARTS THEREOF ARE PROHIBITED WITHOUT EXPRESS PERMISSION

NOTE: ACCESS PANEL LOCATIONS TO BE AGREED WITH ARCHITECT
ACCESS DOORS TO BE PROVIDED TO SVP'S WHERE INDICATED
AND TO BE CO ORDINATED WITH ARCHITECTS ACCESS PANEL
ACCESS PANEL TO HAVE 150MM X150MM CLEAR OPENING

CUT BACK AND DIVERT EXISTING
RAIN WATER DOWN PIPE TO
FACILITATE WINDOW MODIFICATION.

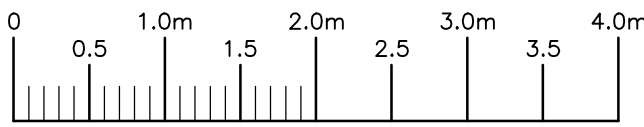


NOTES:

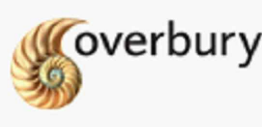
- THIS DRAWING IS THE PROPERTY OF HITEK CONSULTANTS LIMITED AND IS PROTECTED UNDER THE COPYRIGHTS DESIGNS AND PATENTS ACT 1988. ALL RIGHTS RESERVED. THIS DRAWING IS ISSUED ON CONDITION THAT IT IS NOT COPIED, REPRINTED OR REPRODUCED, WHOLLY OR IN PART, WITHOUT THE CONSENT OF HITEK CONSULTANTS LIMITED.
- DO NOT SCALE FROM THIS DRAWING. ALL DIMENSIONS AND SETTING OUT TO BE TAKEN FROM ARCHITECTURAL DRAWINGS.
- THIS DRAWING SHALL BE READ IN CONJUNCTION WITH THE ARCHITECTS, STRUCTURAL ENGINEERS AND ALL OTHER SERVICES DRAWINGS AND SPECIFICATIONS.
- THE INFORMATION CONTAINED ON THIS DRAWING HAS BEEN PRODUCED FROM A NON DESTRUCTIVE VISUAL SURVEY AND RECORD DOCUMENTATION ONLY. IT IS THE THE CONTRACTORS RESPONSIBILITY TO VERIFY ALL INFORMATION PRIOR TO ANY SERVICES BEING ISOLATED AND STRIPPED OUT.
- THE CONTRACTOR SHALL CO-ORDINATE ALL SERVICES ACCESS POSITIONS WITH OTHER TRADES AS REQUIRED.
- THE CONTRACTOR SHALL ENSURE ALL SERVICES PENETRATING FIRE COMPARTMENTS AND SMOKE CURTAINS ARE FIRE STOPPED TO THE SAME STANDARD AS THE BUILDING ELEMENT THEY PENETRATE.
- ALL DIMENSIONS ARE IN MILLIMETERS.
- THE USE OF SHORT RADIUS OR 90° BENDS FOR CHANGES IN DIRECTION IS NOT PERMITTED; ONLY LONG OR MEDIUM RADIUS 45° BENDS SHALL BE USED. ALL JUNCTIONS SHALL BE 45°.
- THE SANITARY DRAINAGE DESIGN AND INSTALLATION SHALL BE IN STRICT ACCORDANCE WITH BS. EN. 12056-2 AND BUILDING REGULATIONS APPROVED DOCUMENT H.
- DRAINAGE PIPEWORK SHALL BE INSTALLED IN CAST IRON AND ACOUSTICALLY INSULATED AND BOXED OUT.
- WHERE FOUL DRAINAGE PIPEWORK OFFSETS, PIPEWORK SHALL BE SET TO FALL AT 1:80 UNLESS OTHERWISE STATED ON THE DRAWINGS.
- COMMON VENT PIPEWORK SHALL BE SET TO FALL AT 1:100 UNLESS OTHERWISE STATED ON THE DRAWINGS.
- FOR BELOW GROUND DRAINAGE DETAILS REFER TO STRUCTURAL ENGINEERS DRAWINGS AND SPECIFICATION.

LEGEND:

AAV – AUTOMATIC AIR ADMITTANCE VALVE
AFL – ABOVE FLOOD LEVEL
AD – ACCESS DOOR
AP – ACCESS PANEL
ASP – ANTI-SYPHON PIPE
DP – DRAIN POINT
DW – DISHWASHER
CE – CLEANING EYE
C/W – COMPLETE WITH
L/L – LOW LEVEL
M/L – MID LEVEL
H/L – HIGH LEVEL
RE – RODDING EYE
S – SINK
SHW – SHOWER
SVP – SOIL VENT PIPE
SS – STUB STACK
SP – SOIL PIPE
TB – TO BELOW
WHB – WASH HAND BASIN
WF – WASTE FLOAT
W/M – WASHING MACHINE

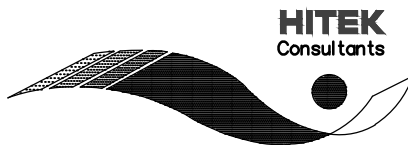


SCALE: 1:50 @ A1



FOR TENDER ONLY

T1	21.10.19	TENDER ISSUE	CAM	FMc
Rev	Date	Details	By	Chd



Hitek Consultants Ltd
Chartered Building Services Consulting Engineers
The Stables
Parsonage Farm
Hollow Hill Lane
Iver, Bucks
SL0 0JV
T 01753 650 310
T 0844 880 5701
F 0844 880 5702
E info@hitekconsultants.co.uk
cad@hitekconsultants.co.uk
www.hitekconsultants.co.uk

Project
**36 - 38 GORDON SQUARE
LONDON
SEPP REFURBISHMENT WORKS**

Client
UNIVERSITY COLLEGE LONDON

Architect
DIVERSE INTERIOR ARCHITECTURE

Title
**STAGE 4 SECOND FLOOR. PROPOSED
ABOVE GROUND DRAINAGE
LAYOUT**

Scale	1:50 @ A1	Drawing no.	5973-02-PS-1004
-------	-----------	-------------	-----------------

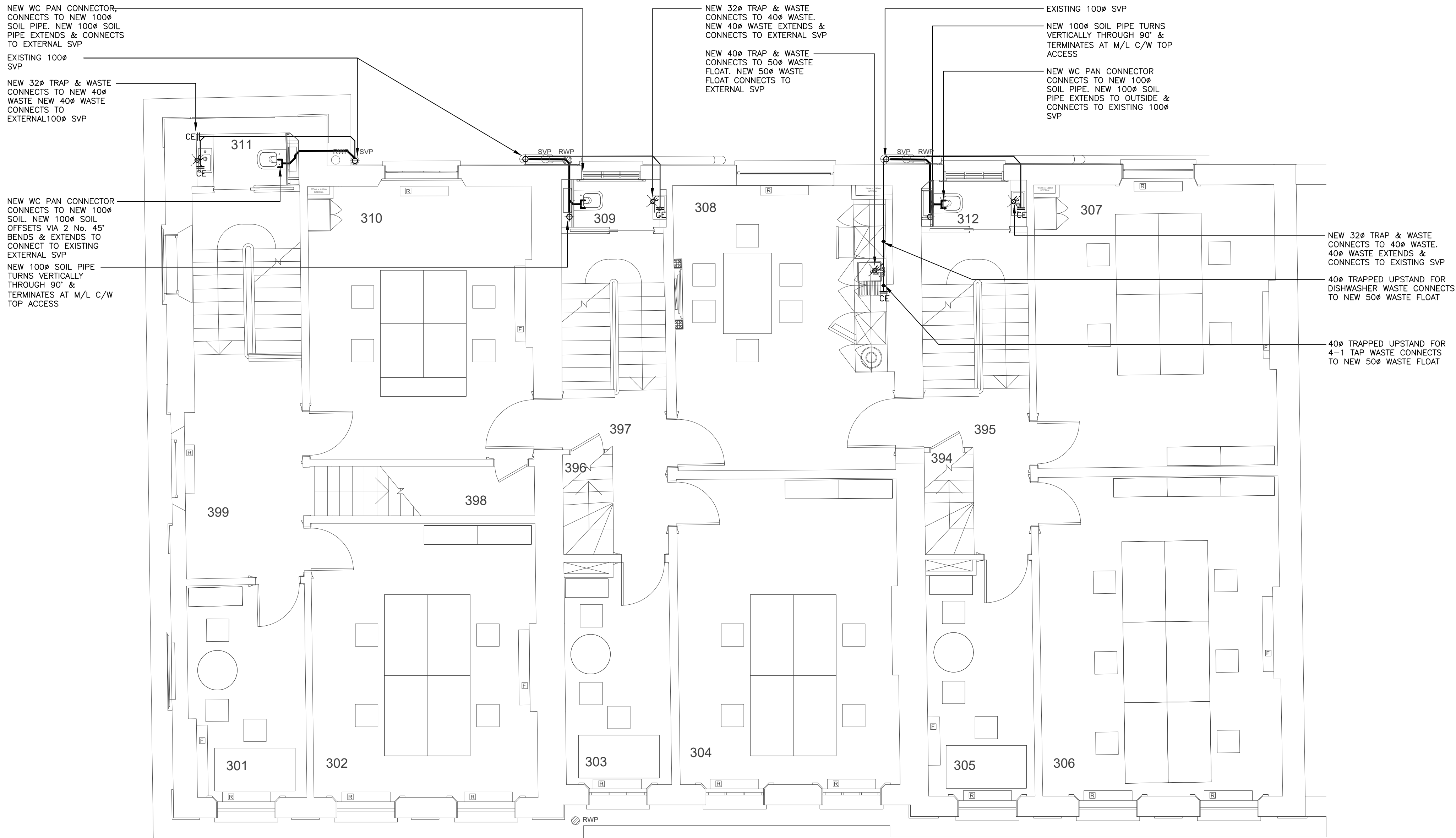
Date	SEPT 2019	Revision	T1
------	-----------	----------	----

Designed	IM	Cad ref	5973-02-PS-1004-T1
----------	----	---------	--------------------

Drawn	CAM	Checked	DTS
-------	-----	---------	-----

COPYRIGHT NOTICE
THIS DRAWING REMAINS THE PROPERTY OF HITEK CONSULTANTS LIMITED. COPIES OF
THIS DRAWING OR PARTS THEREOF ARE PROHIBITED WITHOUT EXPRESS PERMISSION

NOTE: ACCESS PANEL LOCATIONS TO BE AGREED WITH ARCHITECT
ACCESS DOORS TO BE PROVIDED TO SVP'S WHERE INDICATED
AND TO BE CO ORDINATED WITH ARCHITECTS ACCESS PANEL
ACCESS PANEL TO HAVE 150MM X150MM CLEAR OPENING

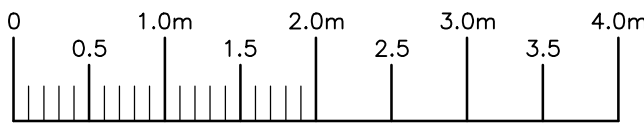


NOTES:

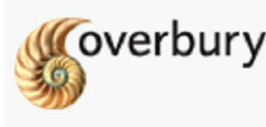
- THIS DRAWING IS THE PROPERTY OF HITEK CONSULTANTS LIMITED AND IS PROTECTED UNDER THE COPYRIGHTS DESIGNS AND PATENTS ACT 1988. ALL RIGHTS RESERVED. THIS DRAWING IS ISSUED ON CONDITION THAT IT IS NOT COPIED, REPRINTED OR REPRODUCED, WHOLLY OR IN PART, WITHOUT THE CONSENT OF HITEK CONSULTANTS LIMITED.
- DO NOT SCALE FROM THIS DRAWING. ALL DIMENSIONS AND SETTING OUT TO BE TAKEN FROM ARCHITECTURAL DRAWINGS.
- THIS DRAWING SHALL BE READ IN CONJUNCTION WITH THE ARCHITECTS, STRUCTURAL ENGINEERS AND ALL OTHER SERVICES DRAWINGS AND SPECIFICATIONS.
- THE INFORMATION CONTAINED ON THIS DRAWING HAS BEEN PRODUCED FROM A NON DESTRUCTIVE VISUAL SURVEY AND RECORD DOCUMENTATION ONLY. IT IS THE THE CONTRACTORS RESPONSIBILITY TO VERIFY ALL INFORMATION PRIOR TO ANY SERVICES BEING ISOLATED AND STRIPPED OUT.
- THE CONTRACTOR SHALL CO-ORDINATE ALL SERVICES ACCESS POSITIONS WITH OTHER TRADES AS REQUIRED.
- THE CONTRACTOR SHALL ENSURE ALL SERVICES PENETRATING FIRE COMPARTMENTS AND SMOKE CURTAINS ARE FIRE STOPPED TO THE SAME STANDARD AS THE BUILDING ELEMENT THEY PENETRATE.
- ALL DIMENSIONS ARE IN MILLIMETERS.
- THE USE OF SHORT RADIUS OR 90° BENDS FOR CHANGES IN DIRECTION IS NOT PERMITTED; ONLY LONG OR MEDIUM RADIUS 45° BENDS SHALL BE USED. ALL JUNCTIONS SHALL BE 45°.
- THE SANITARY DRAINAGE DESIGN AND INSTALLATION SHALL BE IN STRICT ACCORDANCE WITH BS. EN. 12056-2 AND BUILDING REGULATIONS APPROVED DOCUMENT H.
- DRAINAGE PIPEWORK SHALL BE INSTALLED IN CAST IRON AND ACOUSTICALLY INSULATED AND BOXED OUT.
- WHERE FOUL DRAINAGE PIPEWORK OFFSETS, PIPEWORK SHALL BE SET TO FALL AT 1:80 UNLESS OTHERWISE STATED ON THE DRAWINGS.
- COMMON VENT PIPEWORK SHALL BE SET TO FALL AT 1:100 UNLESS OTHERWISE STATED ON THE DRAWINGS.
- FOR BELOW GROUND DRAINAGE DETAILS REFER TO STRUCTURAL ENGINEERS DRAWINGS AND SPECIFICATION.

LEGEND:

AAV - AUTOMATIC AIR ADMITTANCE VALVE
AFL - ABOVE FLOOD LEVEL
AD - ACCESS DOOR
AP - ACCESS PANEL
ASP - ANTI-SIPHON PIPE
DP - DRAIN POINT
DW - DISHWASHER
CE - CLEANING EYE
C/W - COMPLETE WITH
L/L - LOW LEVEL
M/L - MID LEVEL
H/L - HIGH LEVEL
RE - RODDING EYE
S - SINK
SHW - SHOWER
SVP - SOIL VENT PIPE
SS - STUB STACK
SP - SOIL PIPE
TB - TO BELOW
WHB - WASH HAND BASIN
WF - WASTE FLOAT
W/M - WASHING MACHINE

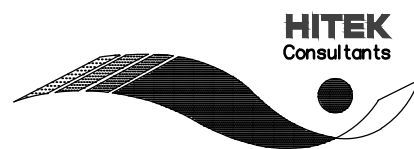


SCALE: 1:50 @ A1



FOR TENDER ONLY

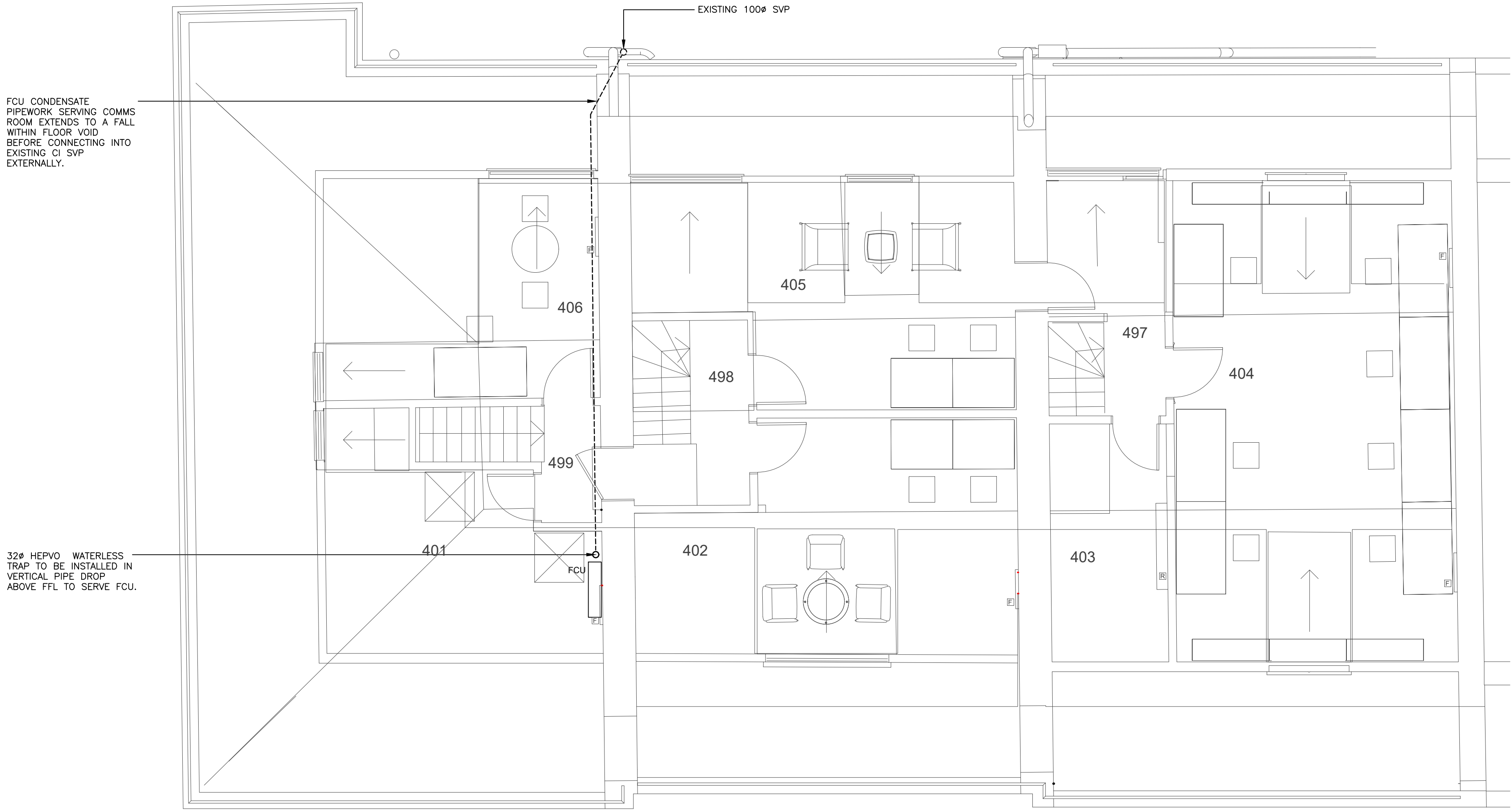
T1	21.10.19	TENDER ISSUE	CAM	FMc
Rev	Date	Details	By	Chd



Hitek Consultants Ltd
Chartered Building Services Consulting Engineers
The Stables
Parsonage Farm
Hollow Hill Lane
Iver, Bucks
SL0 0JW
T 01753 650 310
T 0844 880 5701
F 0844 880 5702
E info@hitekconsultants.co.uk
cad@hitekconsultants.co.uk
www.hitekconsultants.co.uk

Project	36 - 38 GORDON SQUARE LONDON SEPP REFURBISHMENT WORKS		
Client	UNIVERSITY COLLEGE LONDON		
Architect	DIVERSE INTERIOR ARCHITECTURE		
Title	STAGE 4 THIRD FLOOR. PROPOSED ABOVE GROUND DRAINAGE LAYOUT		
Scale	1:50 @ A1	Drawing no.	5973-03-PS-1005
Date	SEPT 2019	Revision	T1
Designed	IM	Cad ref	5973-03-PS-1005-T1
Drawn	CAM	Checked	DTS
copyright notice THIS DRAWING REMAINS THE PROPERTY OF HITEK CONSULTANTS LIMITED. COPIES OF THIS DRAWING OR PARTS THEREOF ARE PROHIBITED WITHOUT EXPRESS PERMISSION			

NOTE: ACCESS PANEL LOCATIONS TO BE AGREED WITH ARCHITECT
ACCESS DOORS TO BE PROVIDED TO SVP'S WHERE INDICATED
AND TO BE CO-ORDINATED WITH ARCHITECTS ACCESS PANEL
ACCESS PANEL TO HAVE 150MM X150MM CLEAR OPENING

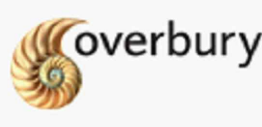
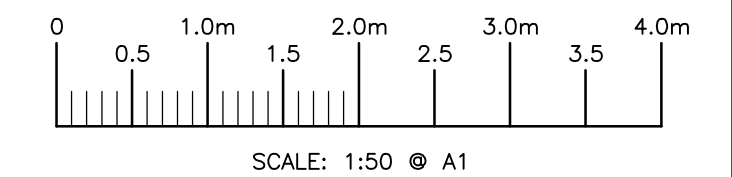


NOTES:

- THIS DRAWING IS THE PROPERTY OF HITEK CONSULTANTS LIMITED AND IS PROTECTED UNDER THE COPYRIGHTS DESIGNS AND PATENTS ACT 1988. ALL RIGHTS RESERVED. THIS DRAWING IS ISSUED ON CONDITION THAT IT IS NOT COPIED, REPRINTED OR REPRODUCED, WHOLLY OR IN PART, WITHOUT THE CONSENT OF HITEK CONSULTANTS LIMITED.
- DO NOT SCALE FROM THIS DRAWING. ALL DIMENSIONS AND SETTING OUT TO BE TAKEN FROM ARCHITECTURAL DRAWINGS.
- THIS DRAWING SHALL BE READ IN CONJUNCTION WITH THE ARCHITECTS, STRUCTURAL ENGINEERS AND ALL OTHER SERVICES DRAWINGS AND SPECIFICATIONS.
- THE INFORMATION CONTAINED ON THIS DRAWING HAS BEEN PRODUCED FROM A NON DESTRUCTIVE VISUAL SURVEY AND RECORD DOCUMENTATION ONLY. IT IS THE CONTRACTORS RESPONSIBILITY TO VERIFY ALL INFORMATION PRIOR TO ANY SERVICES BEING ISOLATED AND STRIPPED OUT.
- THE CONTRACTOR SHALL CO-ORDINATE ALL SERVICES ACCESS POSITIONS WITH OTHER TRADES AS REQUIRED.
- THE CONTRACTOR SHALL ENSURE ALL SERVICES PENETRATING FIRE COMPARTMENTS AND SMOKE CURTAINS ARE FIRE STOPPED TO THE SAME STANDARD AS THE BUILDING ELEMENT THEY PENETRATE.
- ALL DIMENSIONS ARE IN MILLIMETERS.
- THE USE OF SHORT RADIUS OR 90° BENDS FOR CHANGES IN DIRECTION IS NOT PERMITTED; ONLY LONG OR MEDIUM RADIUS 45° BENDS SHALL BE USED. ALL JUNCTIONS SHALL BE 45°.
- THE SANITARY DRAINAGE DESIGN AND INSTALLATION SHALL BE IN STRICT ACCORDANCE WITH BS. EN. 12056-2 AND BUILDING REGULATIONS APPROVED DOCUMENT H.
- DRAINAGE PIPEWORK SHALL BE INSTALLED IN CAST IRON AND ACOUSTICALLY INSULATED AND BOXED OUT.
- WHERE FOUL DRAINAGE PIPEWORK OFFSETS, PIPEWORK SHALL BE SET TO FALL AT 1:80 UNLESS OTHERWISE STATED ON THE DRAWINGS.
- COMMON VENT PIPEWORK SHALL BE SET TO FALL AT 1:100 UNLESS OTHERWISE STATED ON THE DRAWINGS.
- FOR BELOW GROUND DRAINAGE DETAILS REFER TO STRUCTURAL ENGINEERS DRAWINGS AND SPECIFICATION.

LEGEND:

- AAV - AUTOMATIC AIR ADMITTANCE VALVE
ATL - ABOVE FLOOD LEVEL
AD - ACCESS DOOR
AP - ACCESS PANEL
ASP - ANTI-SYPHON PIPE
DP - DRAIN POINT
DW - DISHWASHER
CE - CLEANING EYE
C/W - COMPLETE WITH
L/L - LOW LEVEL
M/L - MID LEVEL
H/L - HIGH LEVEL
RE - RODDING EYE
S - SINK
SHW - SHOWER
SVP - SOIL VENT PIPE
SS - STUB STACK
SP - SOIL PIPE
TB - TO BELOW
WHB - WASH HAND BASIN
WF - WASTE FLOAT
W/M - WASHING MACHINE



FOR TENDER ONLY

	21.10.19	TENDER ISSUE	CAM	FMc
Rev	Date	Details	By	Chd
<div><div></div><div>Hitek Consultants Ltd Chartered Building Services Consulting Engineers The Stables Parsonage Farm Hollow Hill Lane Iver, Bucks SL0 0JW</div><div><div>T 01753 650 310 F 0844 880 5701 E 0844 880 5702 E info@hitekconsultants.co.uk cad@hitekconsultants.co.uk www.hitekconsultants.co.uk</div></div></div>				
project 36 - 38 GORDON SQUARE LONDON SEPP REFURBISHMENT WORKS				
client UNIVERSITY COLLEGE LONDON				
architect DIVERSE INTERIOR ARCHITECTURE				
title STAGE 4 FOURTH FLOOR. PROPOSED ABOVE GROUND DRAINAGE LAYOUT				
scale	1:50 @ A1		Drawing no.	5973-04-PS-1006
date	SEPT 2019		Revision	T1
designed	IM		Cad ref	5973-04-PS-1004-T1
drawn	CAM		Checked	DTS
<div><div>COPYRIGHT NOTICE THIS DRAWING REMAINS THE PROPERTY OF HITEK CONSULTANTS LIMITED. COPIES OF THIS DRAWING OR PARTS THEREOF ARE PROHIBITED WITHOUT EXPRESS PERMISSION</div></div>				

OVERBURY

The Charlotte Building
17 Gresse Street, London W1T 1QL

T: 020 7307 4400
W: www.overbury.com

