




Application ref: 2018/4072/L

Dated: 20 December 2018

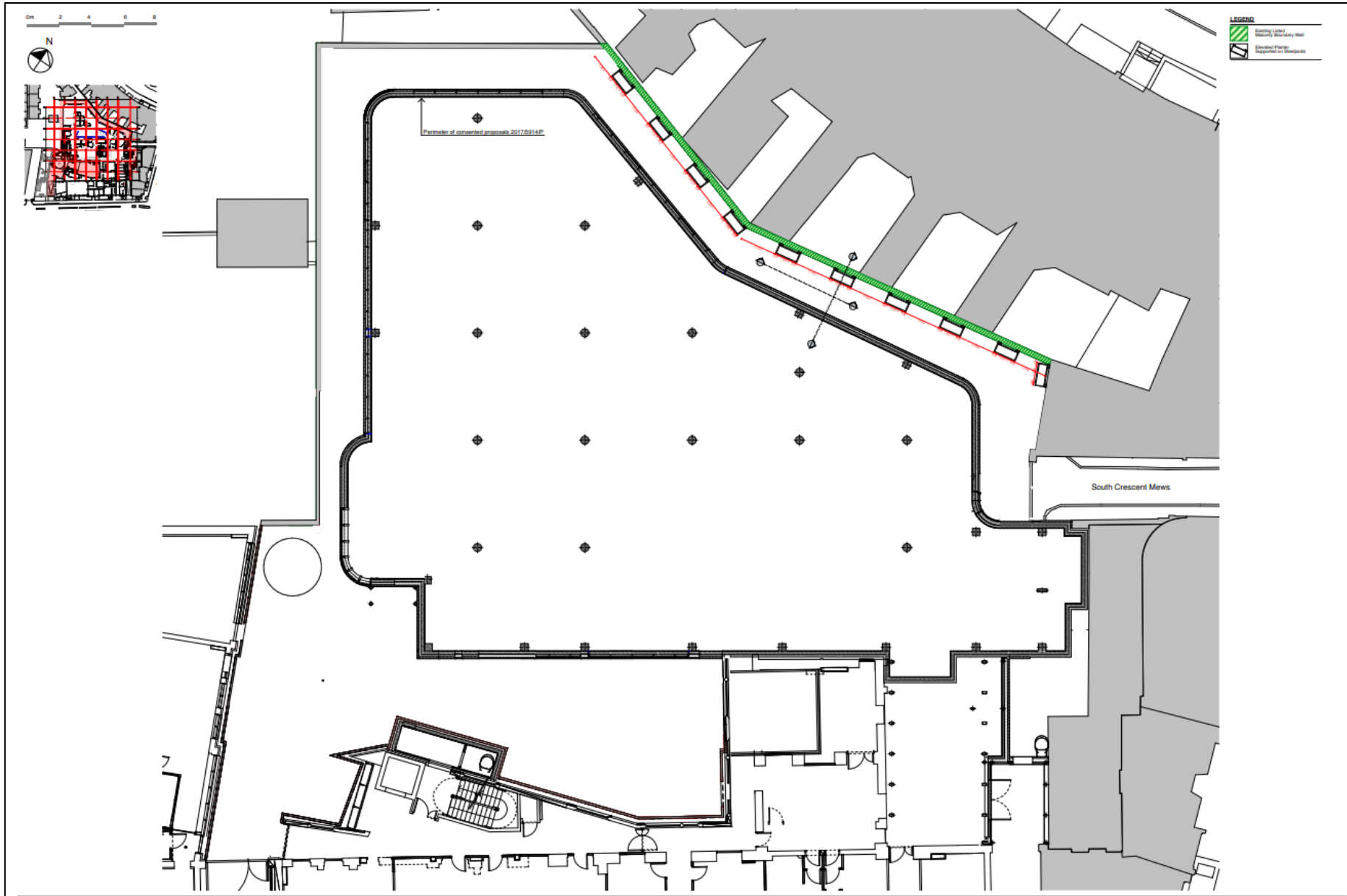
### Conditions And Reasons:

2. The development hereby permitted shall be carried out in accordance with the following approved plans: PL(00)03A, TP2-BMJ-ZZ-00-PL-A-1900, TP2-BMJZZ-XX-PL-A-1905, SK.101; Permanent Works to Listed Wall Schedule; letter 2 dated 22.8.18 from Montagu Evans.

### Changes required to approved plans as follows

- PL(00)03A – no change
- TP2-BMJ-ZZ-00-PL-A-1900 – change proposed, see following information 
- TP2-BMJZZ-XX-PL-A-1905 – change proposed, see following information 
- SK.101 – change proposed, see following information 
- Permanent Works to Listed Wall Schedule; letter 2 dated 22.8.18 from Montagu Evans. – will be updated in the future in accordance with the above once agreed

# Approved Drawing TP2-BMJ-ZZ-00-PL-A-1900



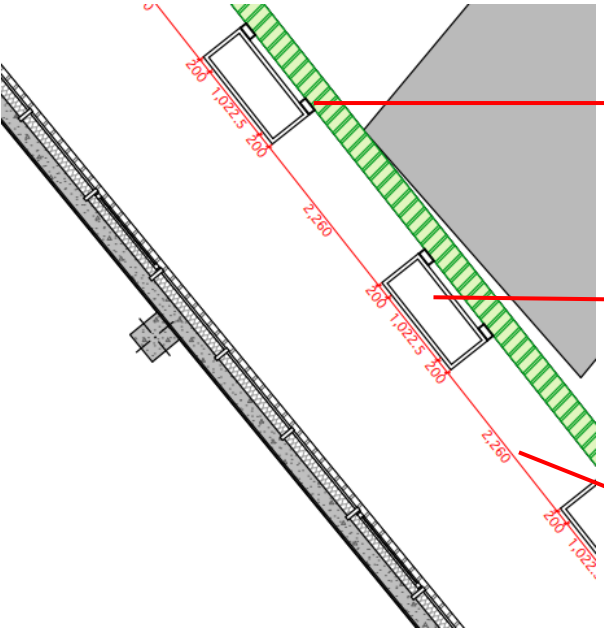
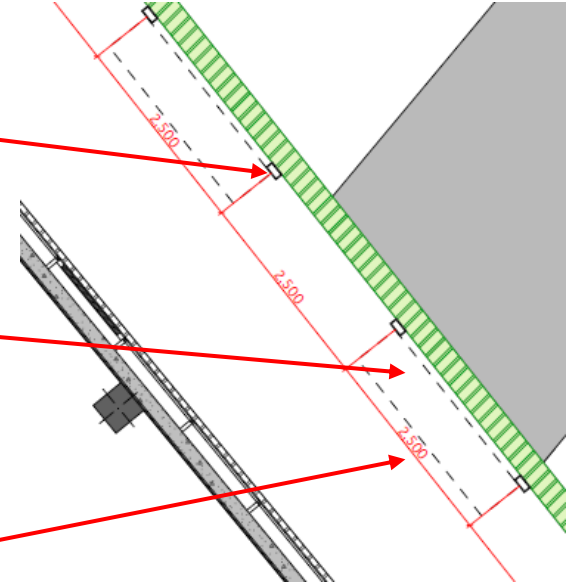
# Revised Drawing TP2-BMJ-ZZ-00-PL-A-1900 Rev P02



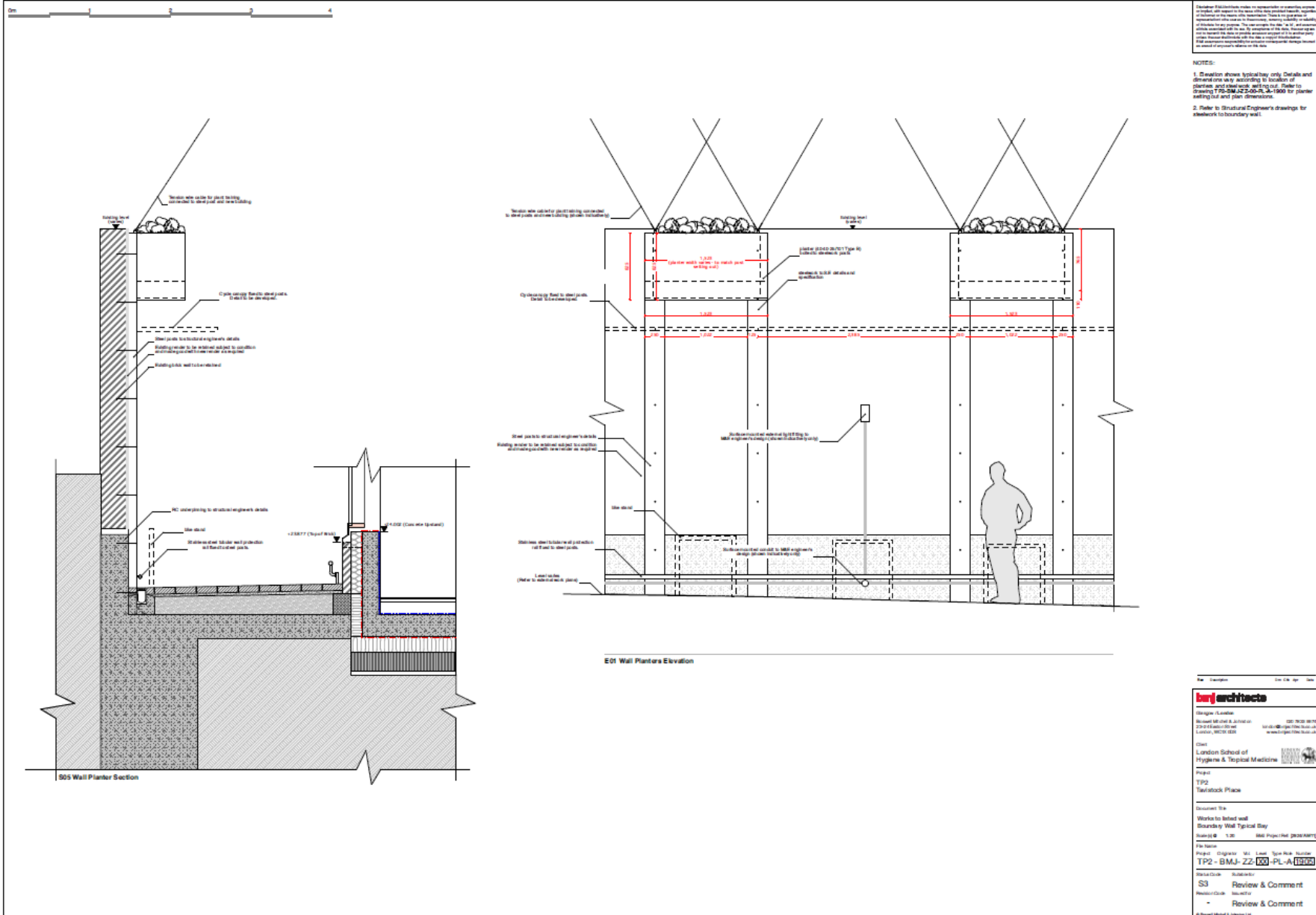
LEGEND  
Water supported on steel joists

South Crescent Mews

# Changes

Approved Drawing TP2-BMJ-ZZ-00-PL-A-1900	Change/s	Revised Drawing TP2-BMJ-ZZ-00-PL-A-1900 REV P02
	<p data-bbox="911 464 1129 628">Post width Reduced from 250 mm to 200mm</p> <p data-bbox="911 692 1253 821">Size and position of planters adjusted to follow post setting out</p> <p data-bbox="942 949 1181 1035">Spacing of steel posts adjusted</p>	

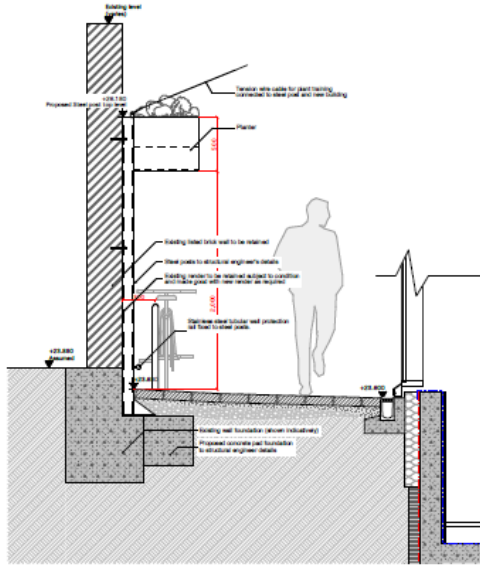
# Approved Drawing TP2-BMJ-ZZ-00-PL-A-1905



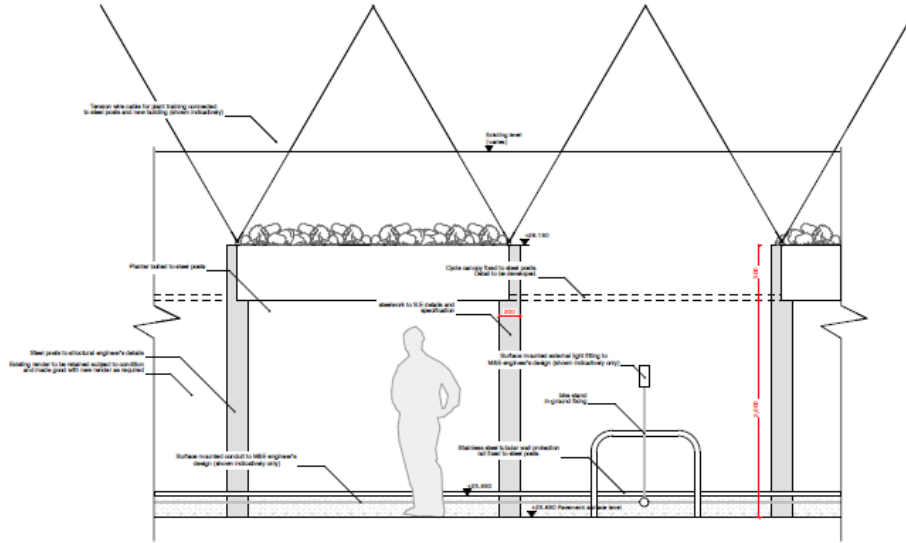
# Revised Drawing TP2-BMJ-ZZ-00-PL-A-1905 Rev P02

0m 1 2 3 4

**NOTE:**  
 Details show typical bay only. Details and dimensions vary according to location of planers and glasswork within bay. Refer to Drawing TP2-BMJ-ZZ-00-PL-A-1905 for planer setting out and plan dimensions.

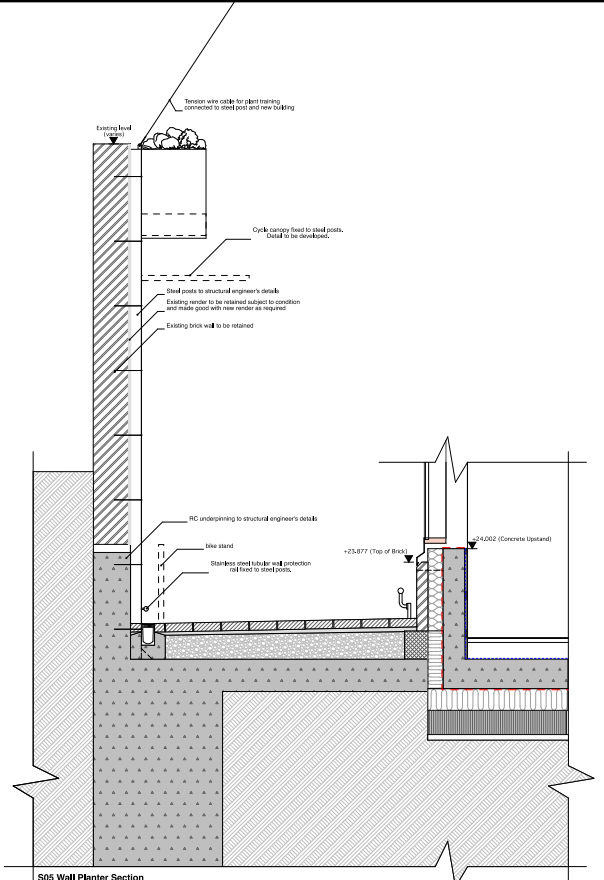
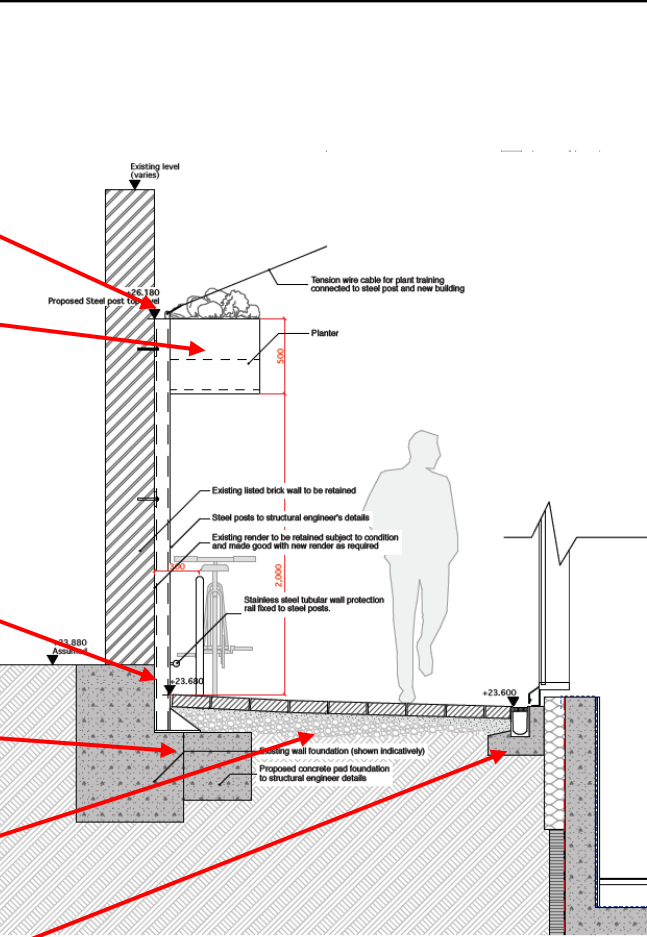


S05 Wall Planter Section

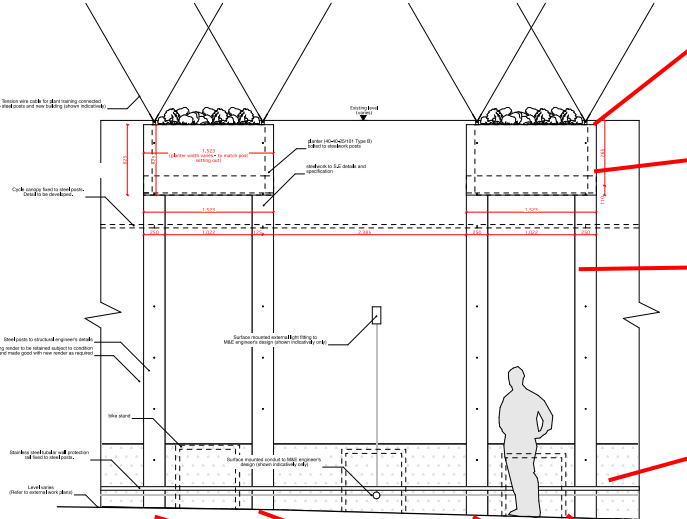
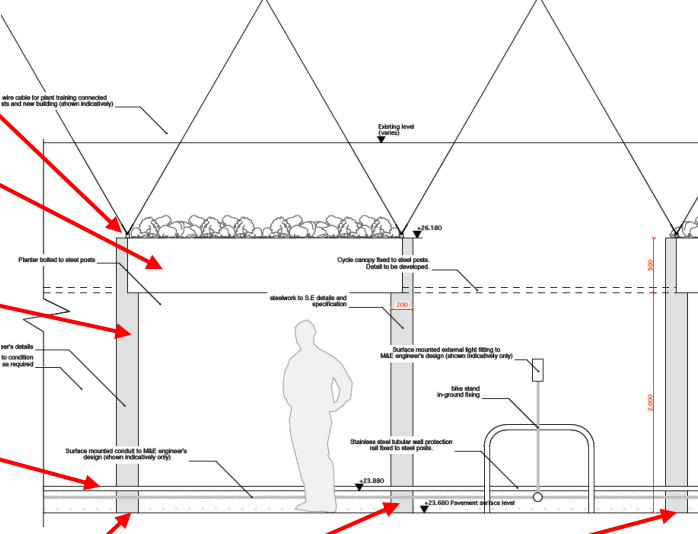


E01 Wall Planters Elevation

# Changes

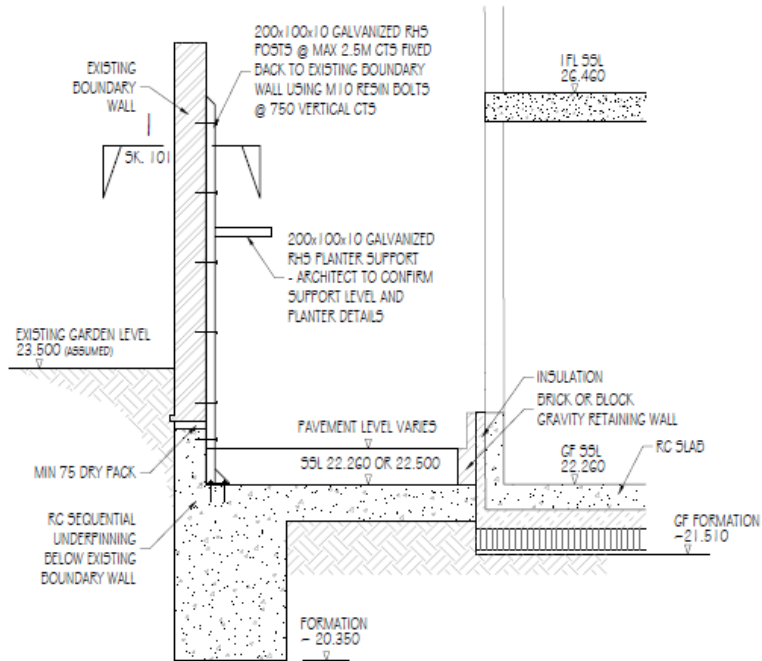
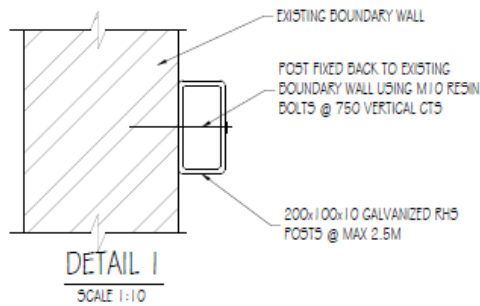
<p align="center"><u>Approved Drawing</u> TP2-BMJ-ZZ-00-PL-A-1905</p>	<p align="center">Change/s</p>	<p align="center"><u>Revised Drawing</u> TP2-BMJ-ZZ-00-PL-A-1905 <b>Rev P02</b></p>
 <p><b>S05 Wall Planter Section</b></p> <p>Approved drawing details include: Tension wire cable to plant training (connected to steel post and new building), Existing level, Cyclor canvas fixed to steel posts (Detail to be developed), Steel posts to structural engineer's details, Existing render to be retained subject to condition and made good with new render as required, Existing brick wall to be retained, RC underpinning to structural engineer's details, Site stand, Stainless steel tubular wall protection rail fixed to steel posts, +23.877 (Top of brick), +24.002 (Concrete slabs), and a drainage gully.</p>	<p>Height of post reduced</p> <p>Height of planter reduced and size adjusted</p> <p>Level of reduced dig significantly reduced and foundations revised</p> <p>Fixing into existing foundation added</p> <p>Concrete slab omitted</p> <p>Drainage gully repositioned to suit new paving falls</p>	 <p><b>S05 Wall Planter Section</b></p> <p>Revised drawing details include: Existing level (varies), Proposed Steel post to rail, Tension wire cable for plant training connected to steel post and new building, Planter (2,000 height), Existing listed brick wall to be retained, Steel posts to structural engineer's details, Existing render to be retained subject to condition and made good with new render as required, Stainless steel tubular wall protection rail fixed to steel posts, +23.890 Assumed, +23.690, +23.600, Existing wall foundation (shown indicatively), and Proposed concrete pad foundation to structural engineer details.</p>

# Changes

<p><u>Approved Drawing</u> TP2-BMJ-ZZ-00-PL-A-1905</p>	<p>Change/s</p>	<p><u>Revised Drawing</u> TP2-BMJ-ZZ-00-PL-A-1905 <b>Rev P02</b></p>
	<p>Height of post reduced</p> <p>Height of planter reduced and size adjusted</p> <p>Post width reduced from 250mm to 200mm</p> <p>Level of reduced dig significantly reduced</p> <p>Spacing of steel posts adjusted</p>	



# Approved Drawing SK101



**PRELIMINARY**

**Wilde**  
**CARTER-CLACK**

49 Romney Street  
London SW1P 3RF

Tel 020 7233 0303

mail@carterclack.co.uk  
www.carterclack.co.uk

project: LONDON SCHOOL OF HYGIENE & TROPICAL MEDICINE  
TP2 TAVISTOCK PLACE

job no: 4159

sheet no: SK.101

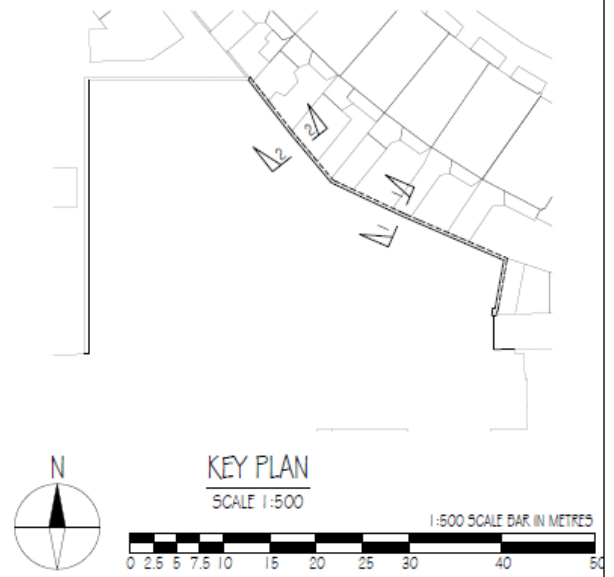
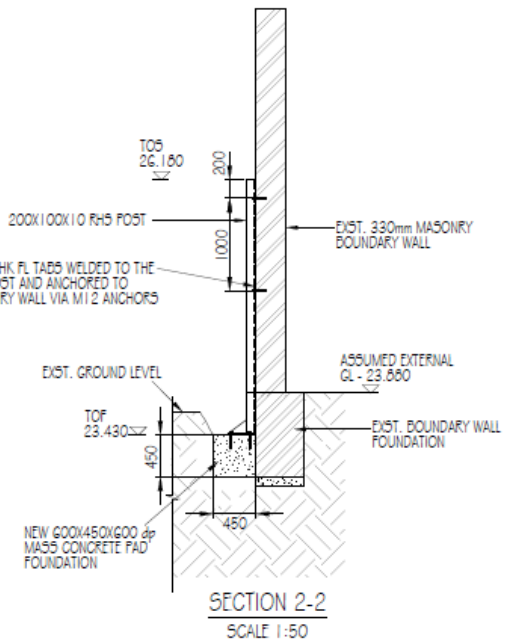
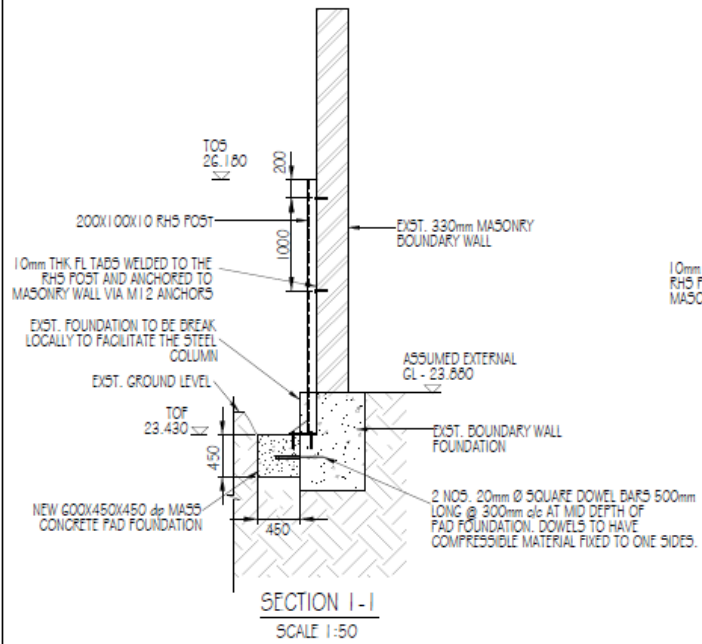
scale: 1:50

title: NORTH-EAST BOUNDARY WALL RESTRAINT DETAILS

date: JUNE 18

engineer: FB

# Revised Drawing SK101 Rev P1



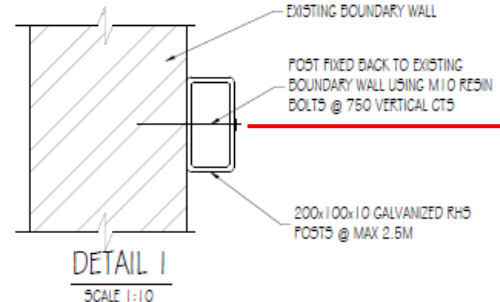
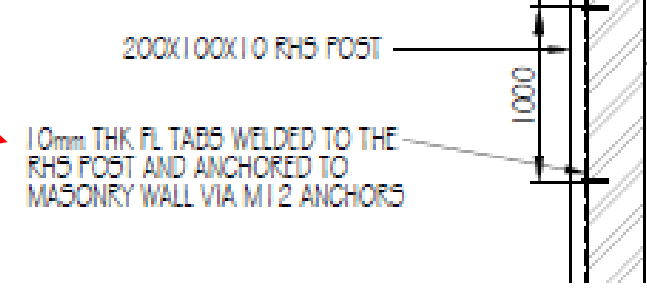
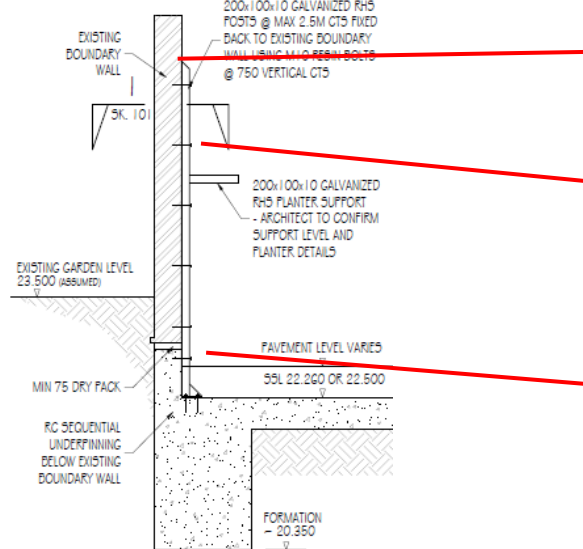
NOTE:  
ALL HOLES AROUND STEEL COLUMNS TO BE FILLED WITH SOIL TO FLUSH WITH EXISTING GROUND LEVEL.

**PRELIMINARY**

<b>Wilde</b> <b>CARTER-CLACK</b>		49 Romney Street London SW1P 3RF	Tel 020 7233 0303	mail@carterclack.co.uk www.carterclack.co.uk
project: LONDON SCHOOL OF HYGIENE & TROPICAL MEDICINE TP2 TAVISTOCK PLACE			job no: 4159	sheet no: SK.101
title: NORTH-EAST BOUNDARY WALL RESTRAINT DETAILS			scale: 1:50	date: JULY 18
			engineer: FB	

PI	ASP	TJS	04.09.18	SECTIONS REVISED
REV	DRN	CHK	DATE	DESCRIPTION

# Changes

<p align="center"><b>Approved Drawing</b> <b>SK101</b></p>	<p align="center"><b>Change/s</b></p>	<p align="center"><b>Revised Drawing</b> <b>SK101 Rev P1</b></p>
	<p align="center">Centre fixing of post changed to fixing through flat tabs either side</p>	
	<p align="center">Height of post reduced</p> <p align="center">Number/centres of fixing points reduced from 6 to 2 (6 fixings reduced to 4 fixings)</p> <p align="center">Level of reduced dig significantly reduced allowing underpinning to be omitted. Extent of post foundation also greatly reduced.</p> <p align="center">Fixing into existing foundation added</p>	