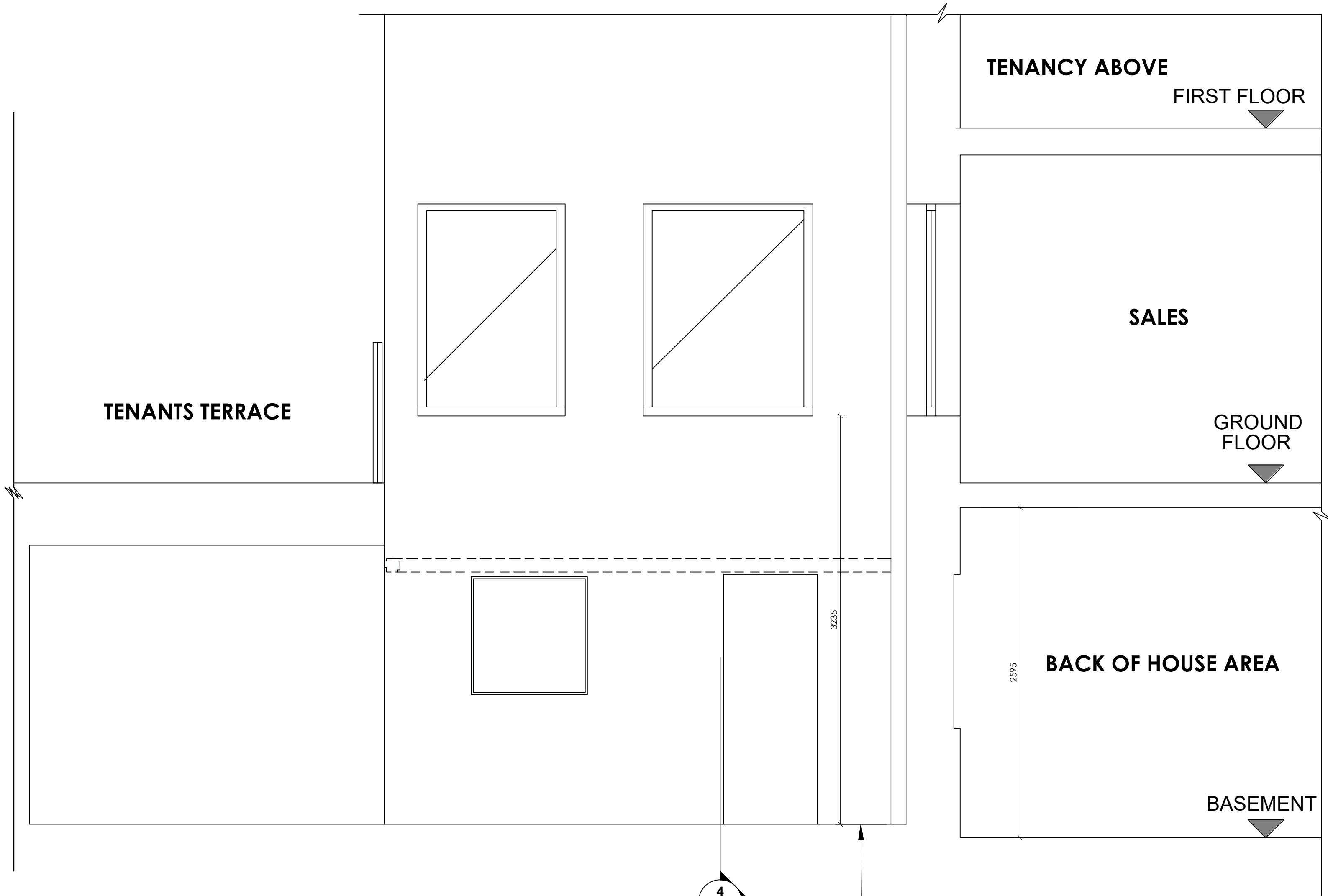
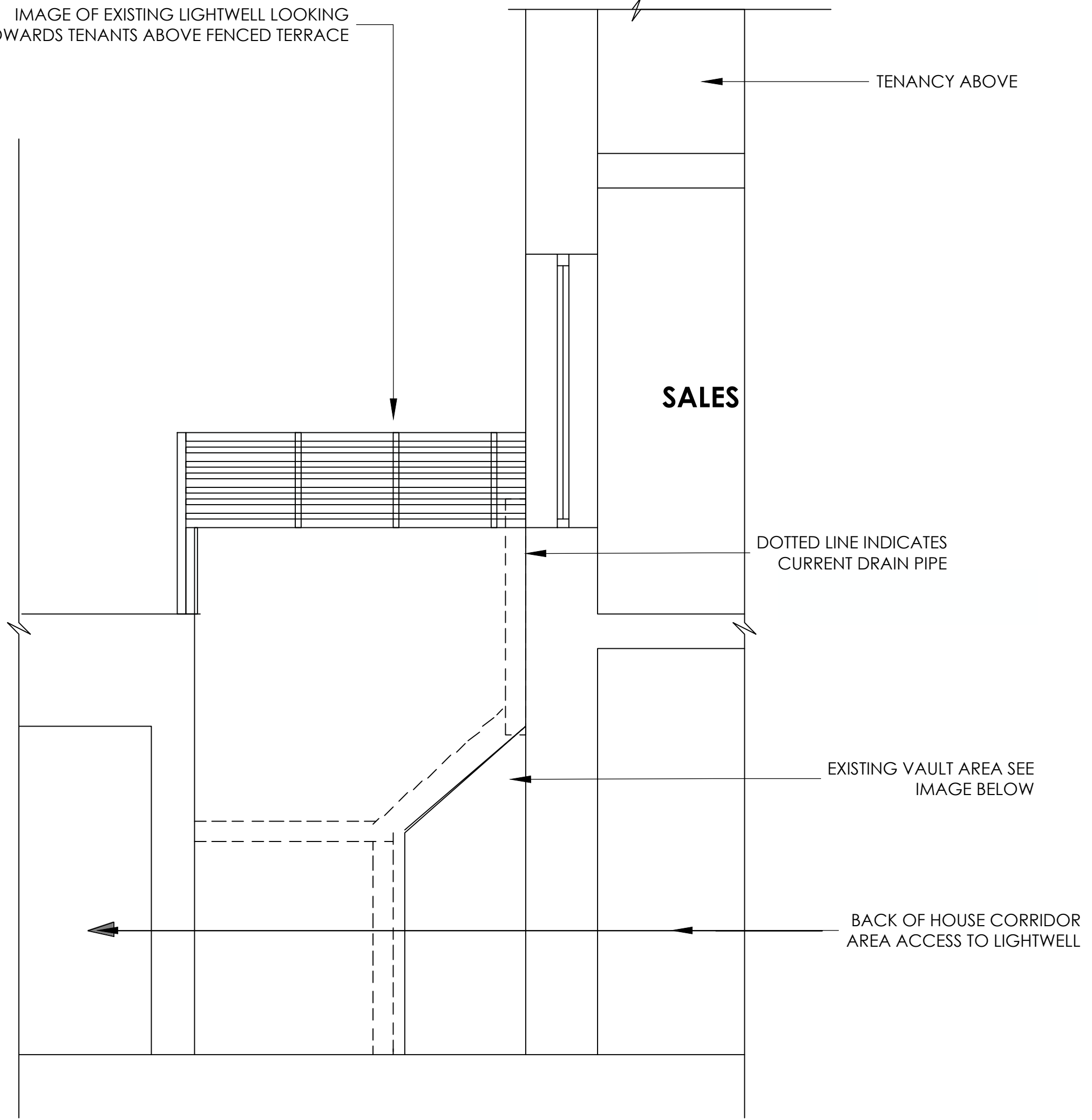




IMAGE OF EXISTING LIGHTWELL LOOKING TOWARDS TENANTS ABOVE FENCED TERRACE



3 EXISTING LIGHTWELL SECTION
1:25 @ A1 - 1:50 @ A3



4 EXISTING LIGHTWELL SECTION
1:25 @ A1 - 1:50 @ A3

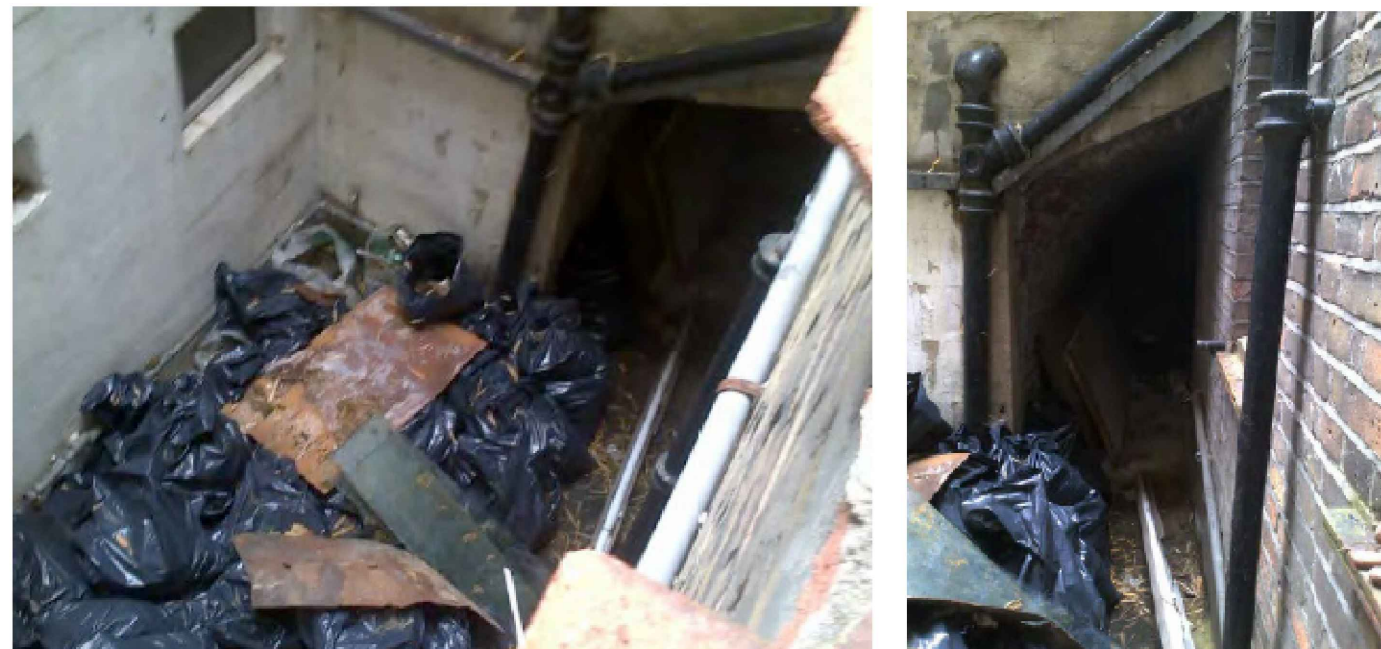
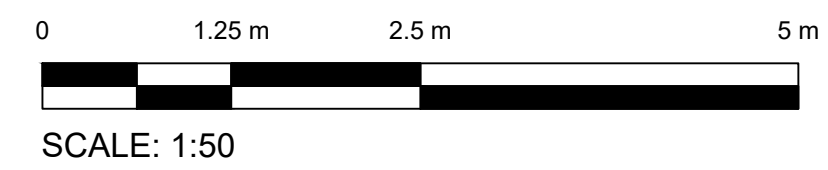


IMAGE OF EXISTING ENTRANCE TO VAULT IN LIGHTWELL



REV	COMMENT	AUTH	DATE
1			
2			
3			
4			
5			
6			
7			
8			
9			
10			

© COPYRIGHT REMAINS WITH INK ASSOCIATES LTD.
THIS DRAWING IS ISSUED ON THE CONDITION THAT IT IS NOT REPRODUCED, RETAINED OR DISCLOSED TO ANY UNAUTHORIZED PERSON EITHER WHOLLY OR IN PART WITHOUT THE CONSENT IN WRITING OF INK ASSOCIATES LTD.
THIS DRAWING REMAINS THE INTELLECTUAL PROPERTY OF INK ASSOCIATES LTD. (000694) DO NOT SCALE FROM THIS DRAWING. ALL MEASUREMENTS ARE IN MILLIMETERS UNLESS STATED OTHERWISE. THE GENERAL CONTRACTOR (GCC) IS RESPONSIBLE TO VERIFY DIMENSIONS ON SITE PRIOR TO MANUFACTURE. ANY DIMENSIONAL DISCREPANCIES ARE TO BE REPORTED TO INK ASSOCIATES LTD IMMEDIATELY. THE GENERAL CONTRACTOR (GCC) IS TO PRODUCE A FULL SET OF SCALED CONSTRUCTION DRAWINGS FOR CONSTRUCTION AND APPROVAL PRIOR TO MANUFACTURE. THE CONTRACTOR IS TO ENSURE STRUCTURAL STABILITY OF ALL INSTALLATION DETAILS AND ELEMENTS. ALWAYS REFER TO RELATED DRAWINGS WHEN CONSIDERING INFORMATION CONTAINED WITHIN THIS DRAWING. ALL WORKS CARRIED OUT ON SITE ARE TO BE IN ACCORDANCE WITH ALL CURRENT AND RELEVANT LOCAL BUILDING REGULATIONS AND CONSTRUCTION DESIGN MANAGEMENT (CDM) REGULATIONS. ALL MATERIALS & SURFACE FINISHES USED ON SITE ARE TO BE IN ACCORDANCE WITH APPROPRIATE FIRE RATINGS AS STIPULATED BY BUILDING CONTROL AND THE LOCAL FIRE OFFICER.

DATE CREATED 23.10.2019	PROJECT TITLE 38 LAMB'S CONDUIT STREET, LONDON
DRAWN BY: ME	CLIENT J CREW
CHECKED BY: SWB	PROJECT NO. JC-001
SCALE / SHEET SIZE AS STATED	
PRINT DATE 24/10/2019	

DRAWING TITLE EXISTING LIGHTWELL SECTIONS		
DWG NO. EX2-02	SUFFIX .02	REV 1