

- General Notes**
1. Do not scale
  2. All dimensions are shown in millimetres unless otherwise noted
  3. Refer to project based risk assessments before undertaking any work
  4. Notify the architect of any discrepancy immediately

All new metalwork to be galvanized steel, with PPC coating to match steel surrounding metalwork.

Post formed of 4 No. 50x50mm SHS steel sections held by plate detail

Closer mechanism housed in rectangular section head rail

Railing formed of 20x20mm square steel rails welded to 50x10mm steel flat rails top and bottom with intermediate rails for stability, carefully fixed to prevent climbing

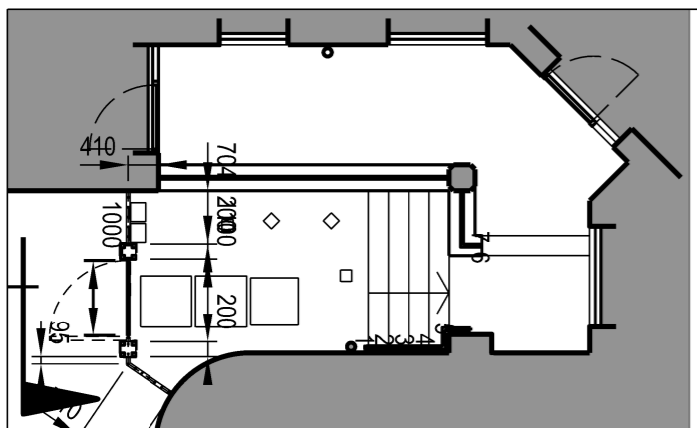
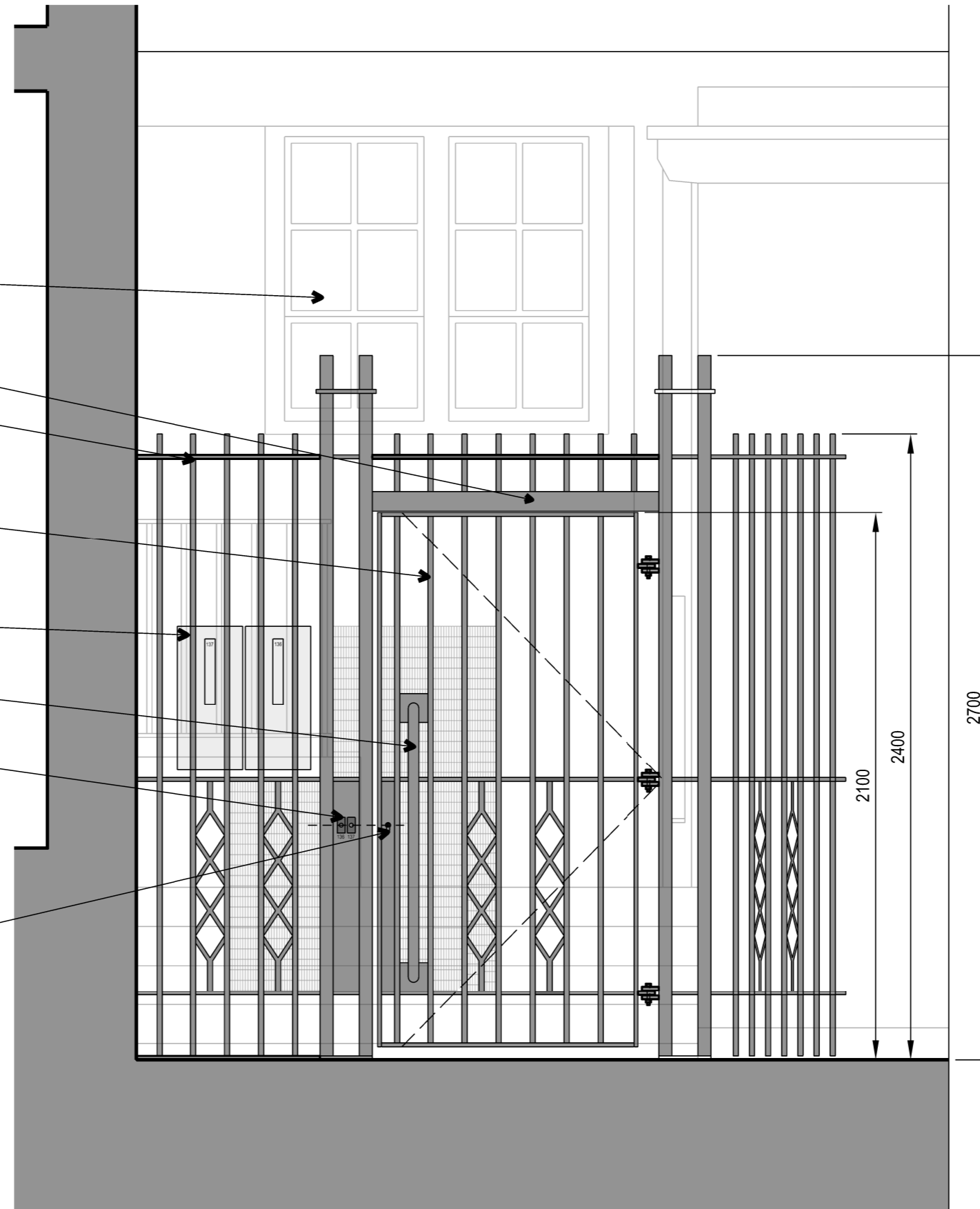
Gate formed of 20x20mm square steel rails welded to 50x10mm steel flat frame with intermediate rails for stability, carefully fixed to prevent climbing

2 No. railing mounted metal post boxes

Pull bar fixed to plates welded between vertical railings

Flat entry call buttons mounted on steel plate fixed within post detail. Cables to be contained within steel section

Gate secured with mortice dead latch, key operated from public side and with thumb-turn internally. Mesh to be installed to railing and gate to internal face to a minimum radius of 900mm from thumbturn to prevent intruder access.



| Rev | Date | Issue Reason | Chk |
|-----|------|--------------|-----|
|     |      |              |     |
|     |      |              |     |
|     |      |              |     |
|     |      |              |     |
|     |      |              |     |
|     |      |              |     |
|     |      |              |     |
|     |      |              |     |
|     |      |              |     |
|     |      |              |     |
|     |      |              |     |
|     |      |              |     |
|     |      |              |     |
|     |      |              |     |
|     |      |              |     |
|     |      |              |     |
|     |      |              |     |
|     |      |              |     |
|     |      |              |     |
|     |      |              |     |
|     |      |              |     |
|     |      |              |     |
|     |      |              |     |

David Lees Architects  
david@davidleesarchitects.co.uk 07597 573 892

Client  
Heritage Surveys Ltd  
L. B. Camden

Project  
Levita House  
Project 136/137  
Security Gate

Title  
Proposed Gate &  
Railing Elevation

Status  
For Comment

|                        |                        |                   |
|------------------------|------------------------|-------------------|
| Project Number<br>1905 | Date<br>2019/06/05     | Checked By<br>DL  |
| Revision<br>#          | Scale @ ISO A3<br>1:20 | Approved By<br>DL |

Drawing Number  
L(0)007