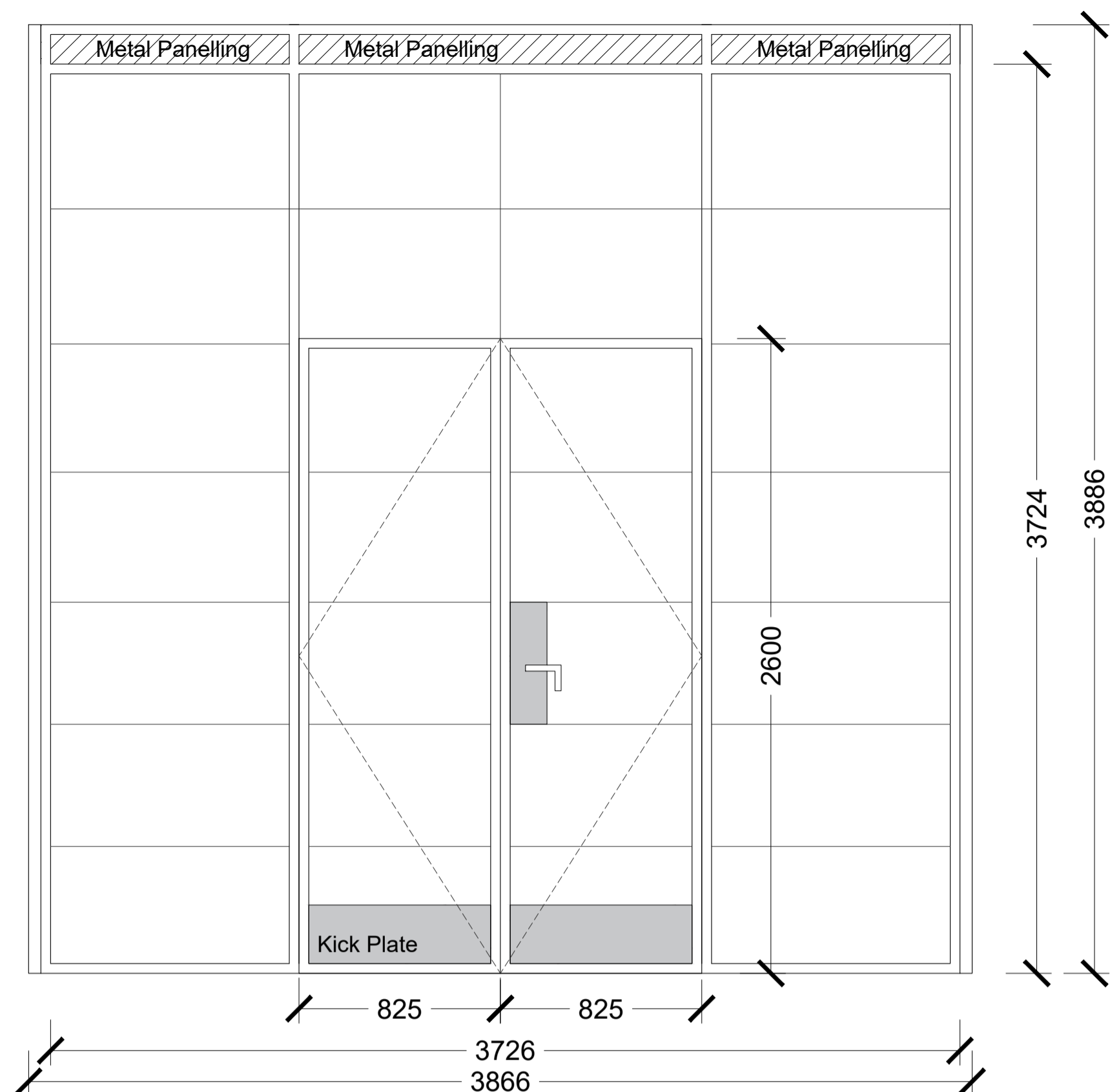
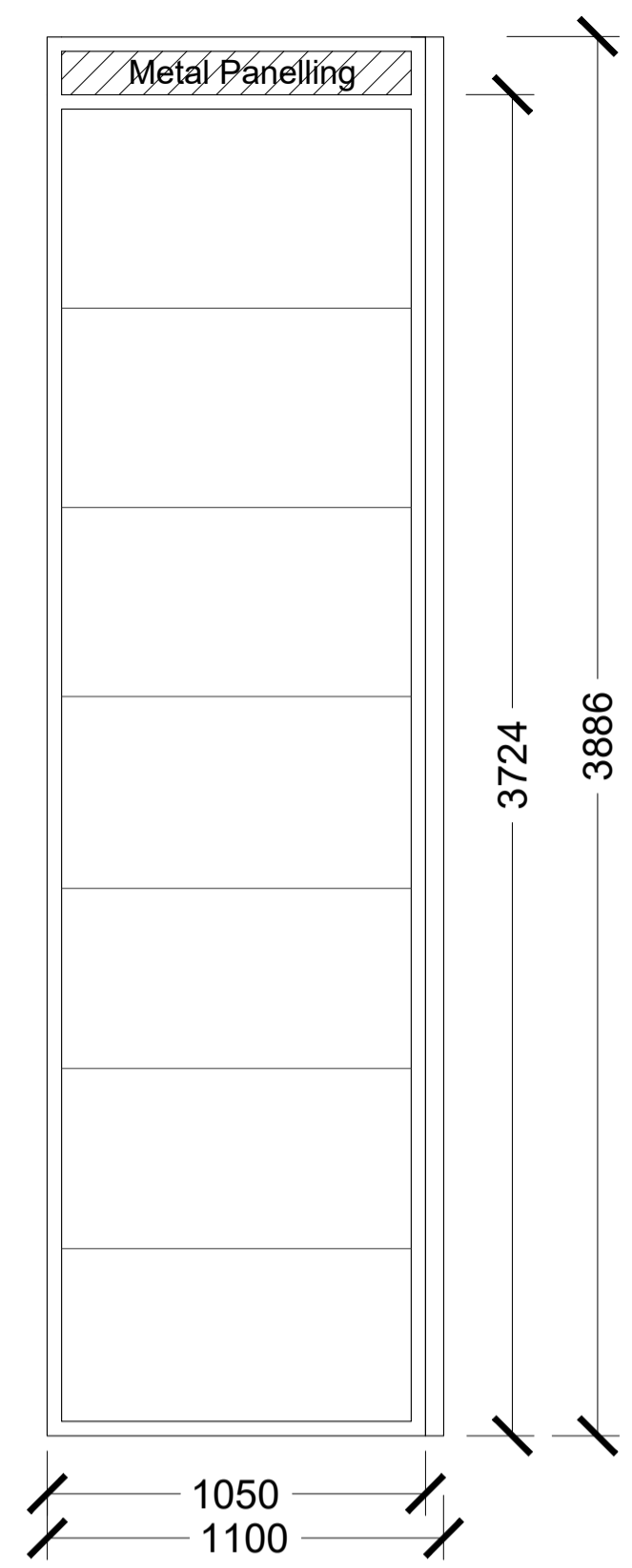


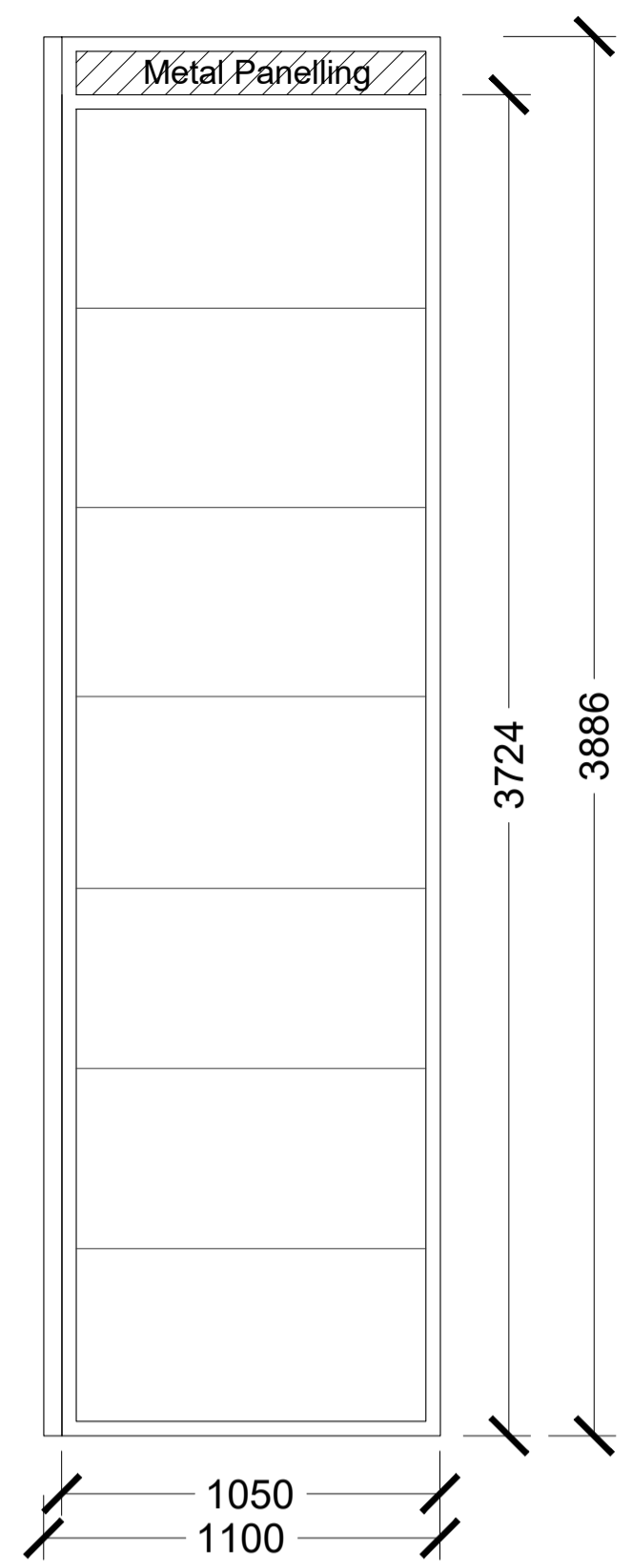
1 - Long Elevation
For enclosures holding EXDG01
Total numbers - 1



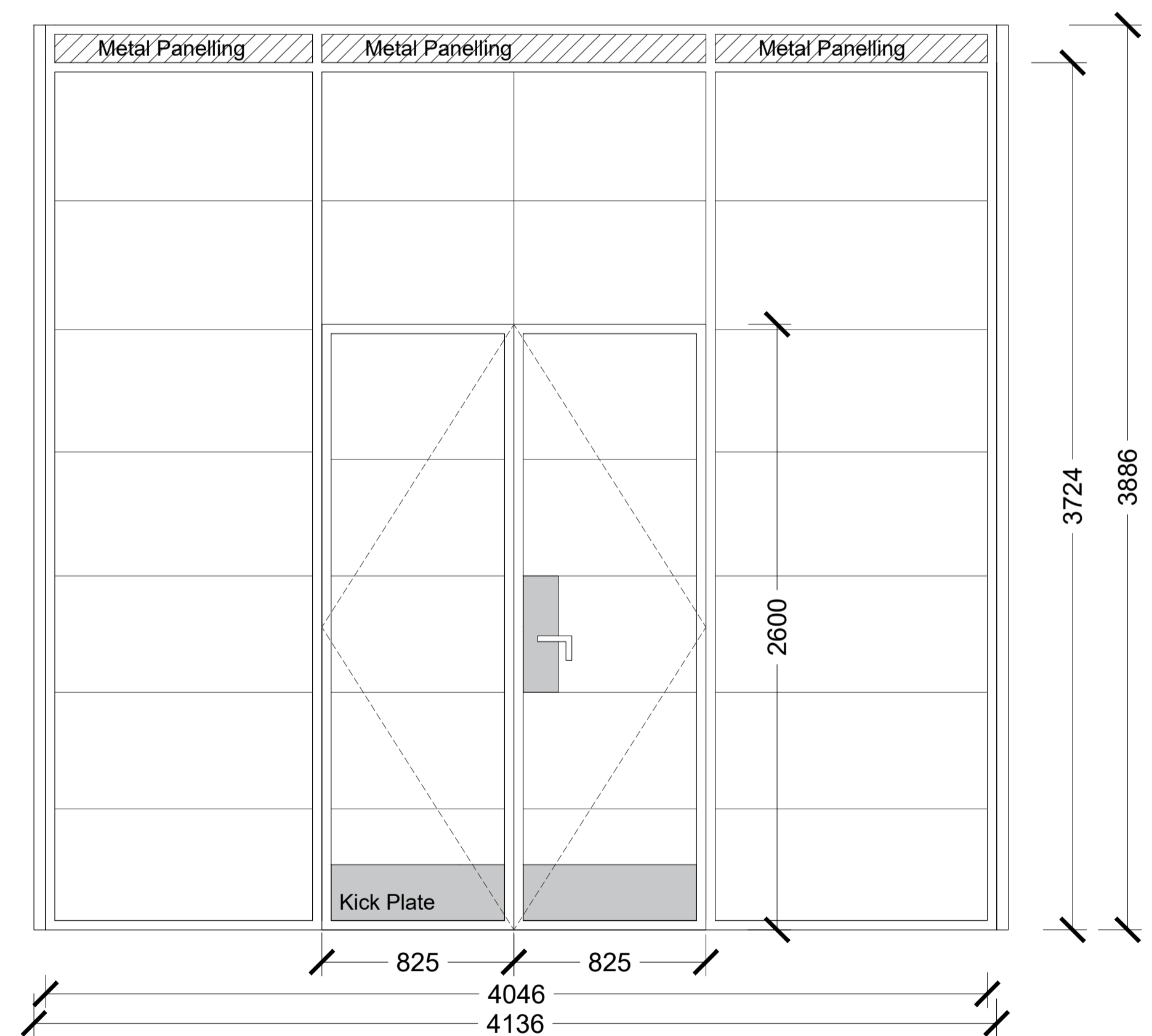
2 - Long Elevation
For enclosures holding EXDG02, EXDG03
Total numbers - 2



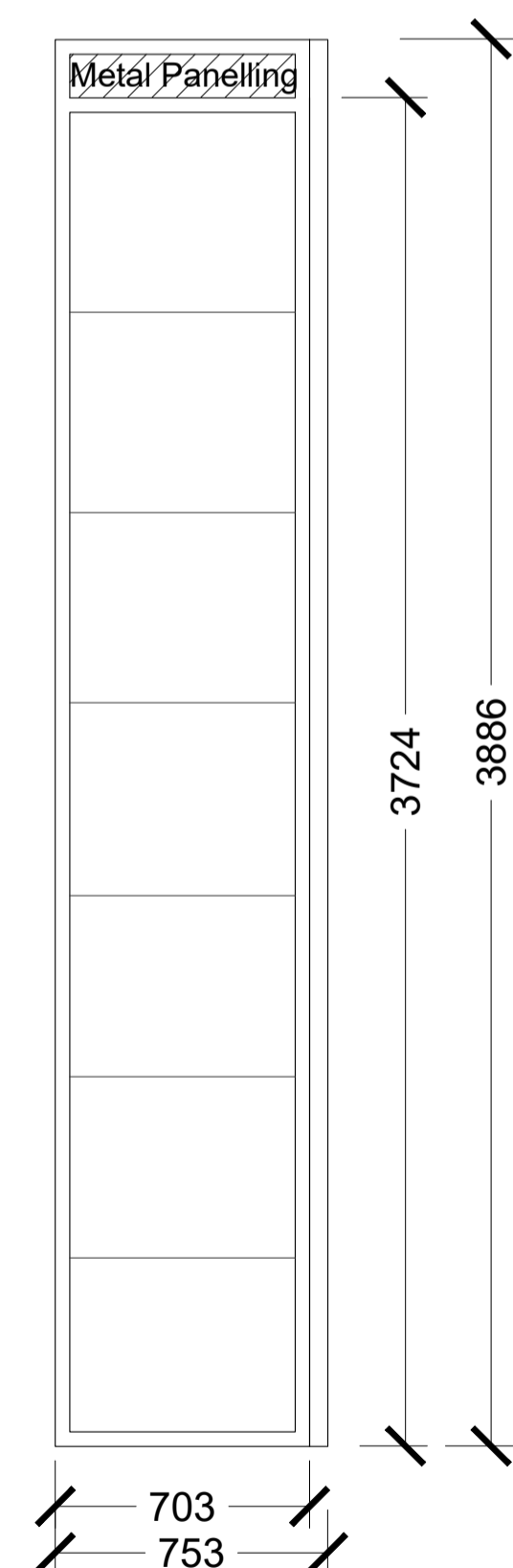
3 - Short Elevation 1
For sides of enclosures holding EXDG01, EXDG02, EXDG03
Total numbers - 3



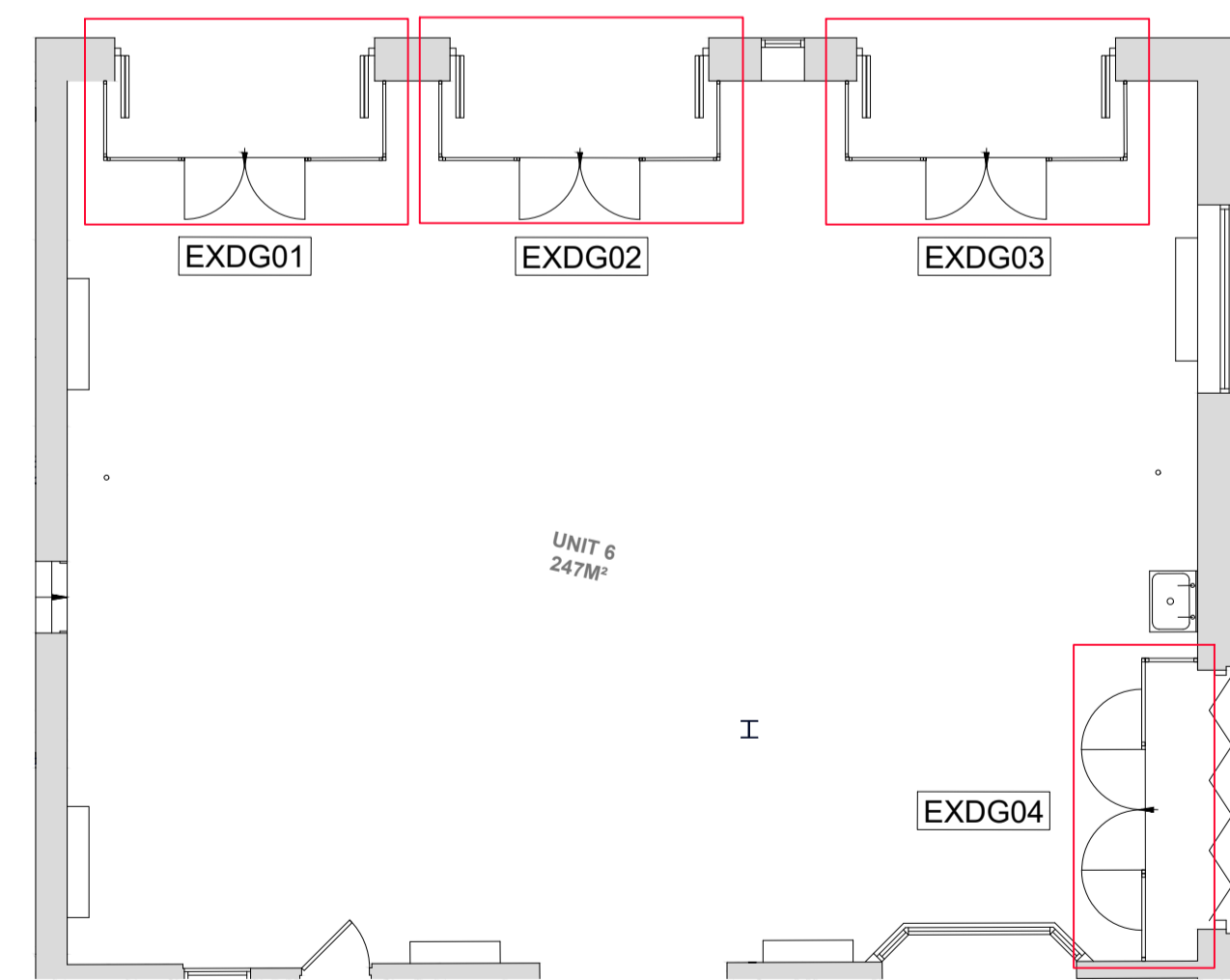
4 - Short Elevation 2
For sides of enclosures holding EXDG01, EXDG02, EXDG03
Total numbers - 3



5 - Long Elevation
For enclosure holding EXDG04
Total numbers - 1



6 - Short Elevation
For enclosure holding EXDG04
Total numbers - 1



7 - Appliance Bay Plan
1:100

Revisions					Revisions						
Rev	Date	By	Description	Checked	Approved	Rev	Date	By	Description	Checked	Approved
P1	14.03.19	TS	Floor Coverings	JM	RH						
P2	08.05.19	TS	Minor Amendments	JM	RH						
P3	30.05.19	TS	Amended off Critical Comments	JM	RH						

Key
 Metal Panelling

A1
A3

Architect / Originator: Tate Harmer	Unit 6182, Stamford Works, 3 Clifft Street, London N16 6JH Tel: +44 (0)207 241 7481 Email: studio@tateharmer.com	Do not scale. All dimensions to be checked on site. This drawing is copyright.
Client: Platinum Land	8 Quorn House, 1 Duke of York Square, Kings Road, London, SW3 4LY	
Project: Belsize Park Firestation		Date of Origin: 28.11.17
Drawing Title: Unit 6 - Appliance Bay Secondary Glazing		Drawn By: TS
Client Sign Off	Scale: 1:20 @ A1	Drawing Status: Planning
Drawing Number: BFS THA PR AL 801 P3	Revision	