
St Pancras Church Gardens

Design /Access & Heritage Statement

9 July 2019



ME Landscape Studio

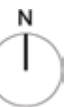
Contents

1.	Executive Summary	3
2.	Site Location	4
3.	Existing Site	5
4.	Brief	6
5.	Landscape Plan	7
6.	Accessibility	8
7.	Heritage	9
8.	Surface materials	10
9.	Planting	11
	- Trees and Shrubs	
	- Herbaceous plants	
	- Hedges	
	- Roses & Wildflowers	
10.	Enhancing Wildlife Value	15

Executive Summary

St Pancras Parish Church, in conjunction with LB Camden, are proposing to create a new garden space directly to the south of St Pancras Church and to make this more accessible to the wider community.

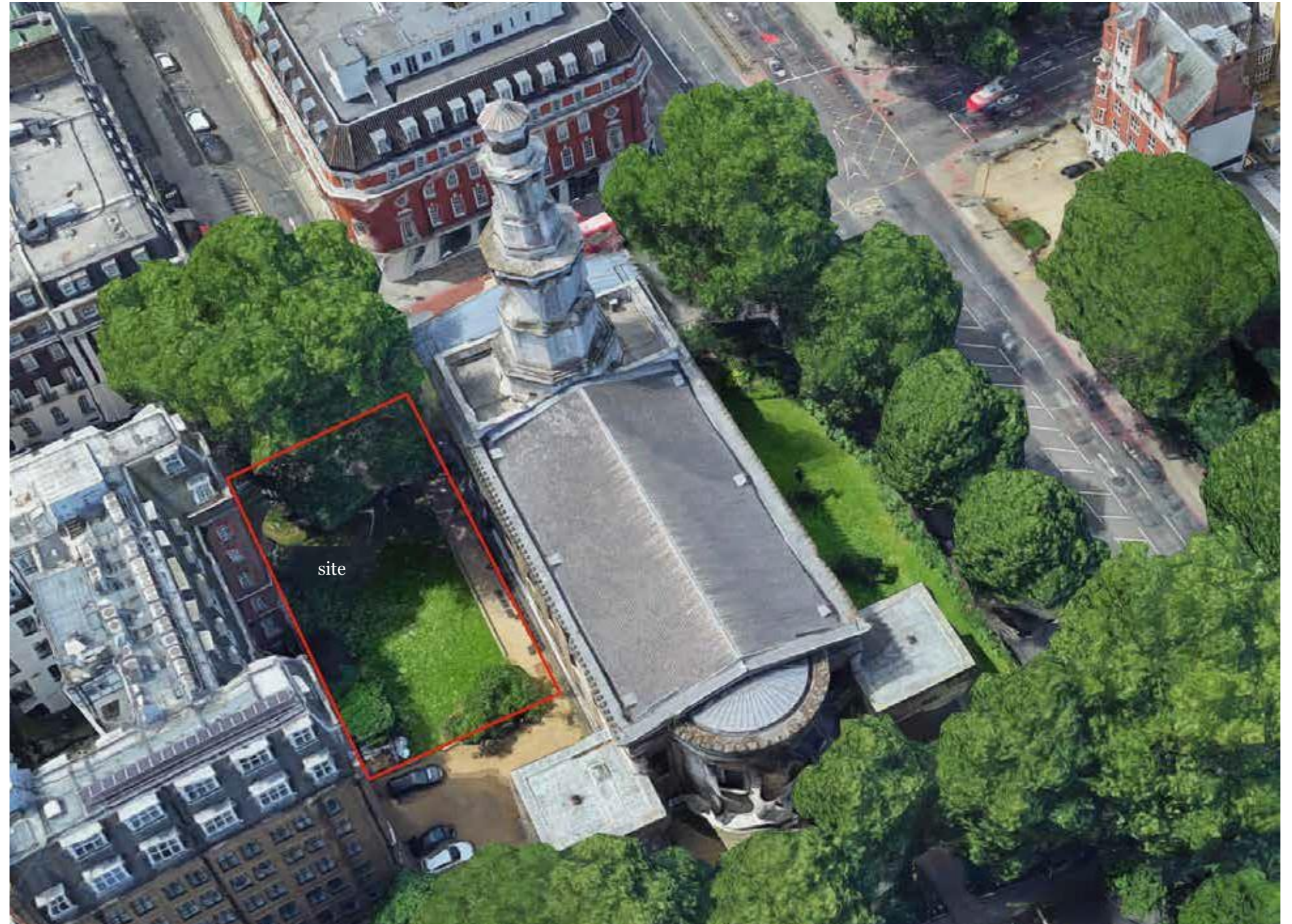
ME Landscape Studio have been appointed to develop the landscape proposals for the site. This document summarises the site context, brief and proposals for the garden site.



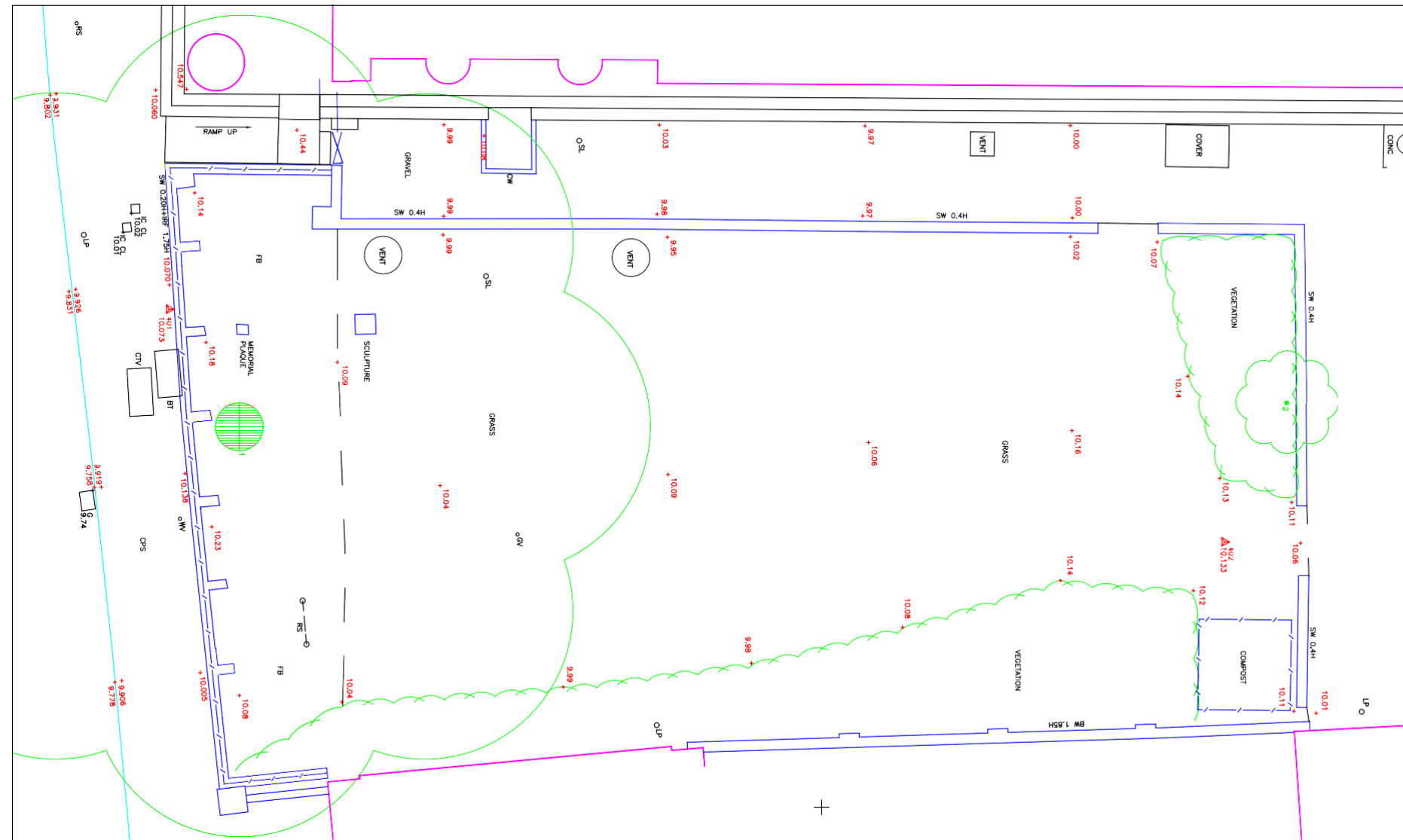
Site Location

The site is located within the grounds of St Pancras Church, in an area to the south of the church. The church lies to the northern boundary of Bloomsbury, on the south side of Euston Road and at the corner of Upper Woburn Place, in the borough of Camden. The church and grounds are within the Bloomsbury Conservation Area. The postcode is: NW1 2BA.

The church was built between 1819-1822. The church is a grade 1 listed building.



Existing Site



St Pancras Parish Church is located on Euston Road and close to an area of deficiency for access to nature and open space.

The site is located on the busy Euston Road in close proximity to Euston train station. The Church serves approximately 3500 local parishioners and has over 60,000 pass it on a daily basis. The area suffers from a high level of traffic related congestion and pollution which has been recorded at reaching more than double EU limits in air pollutants.

The garden at present is rectangular shaped and predominately poorly grassed with some surrounding shrubs. There is a large London Plane tree to the western edge of the garden, close to the boundary. There are some moveable benches that are scattered along the existing pathway, and a composting area along the southern boundary. The garden faces the busy road of Upper Woburn Place. The garden lacks interest and structure and is not particularly inviting from the road. There are no benches in the grassed area and no signage indicating the garden can be used by the public. There is no obvious purpose for the space and it doesn't offer any opportunities for recreation, which leaves it as a wasted space that attracts litter.



shade in the space (27 Feb @ 12.40)



lawn area



planting to southern boundary



onyx sculpture



stone edging/upstand



service cover in lawn

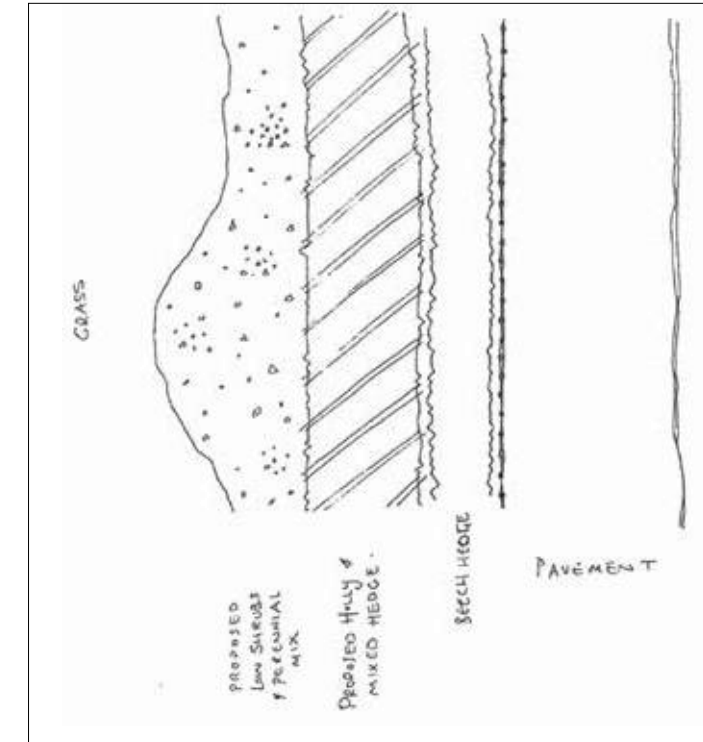
Brief

The brief from the client set out a number of objectives for the improvement of the site. The key elements of the brief are the:

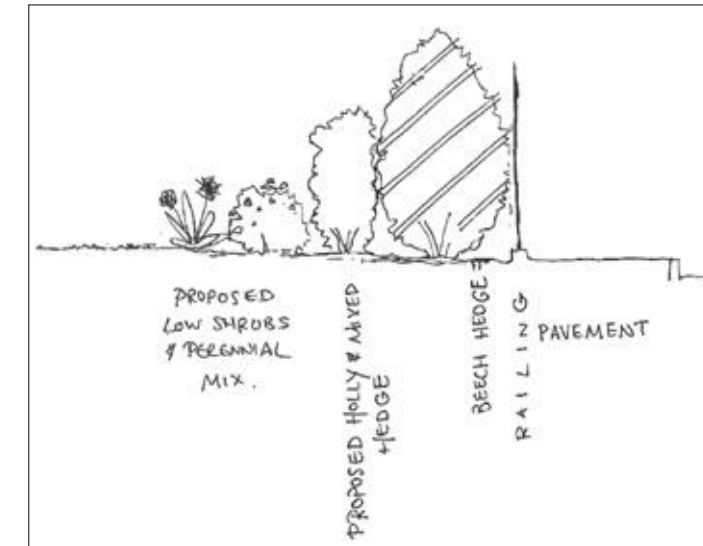
- Creation of a series of small seating areas set within planting beds;
- Relocation of compost bins and tool sheds;
- Creation of a visually more attractive area;
- Provide a diverse range of planting to give provide colour and seasonal interest;
- Increase the amount of usable space and enhance biodiversity;
- Create focused seating areas in the grass areas.

The aim of the improvements works is to provide an inviting and relaxing green space for the local community, workers and commuters, which will help mitigate against local open space deficiencies and the impact of HS2 locally. Whilst this is officially a Church garden, this project intends to open the garden to the wider public. The proposal includes introducing new planting along the boundary between the gardens and Upper Woburn Place to help mitigate against high levels of pollution from passing vehicles and to help to reduce noise levels. New seating areas surrounded by hedging and colourful mixed planting will provide relaxing areas for passive recreation and contemplation. The churchyard also forms part of a green walkway from Grays Inn Road to Regents Park, and part of the westward B-line for pollinating insects traversing London. The garden therefore aims to increase biodiversity in the species selection for planting, to contribute to both local and strategic ecological networks.

The project aims to transform the space into a valued community garden with a variety of planting and landscaped seating areas to help build relationships within the diverse local community, provide a tranquil resting place, increase biodiversity and to improve opportunities for volunteer gardening.



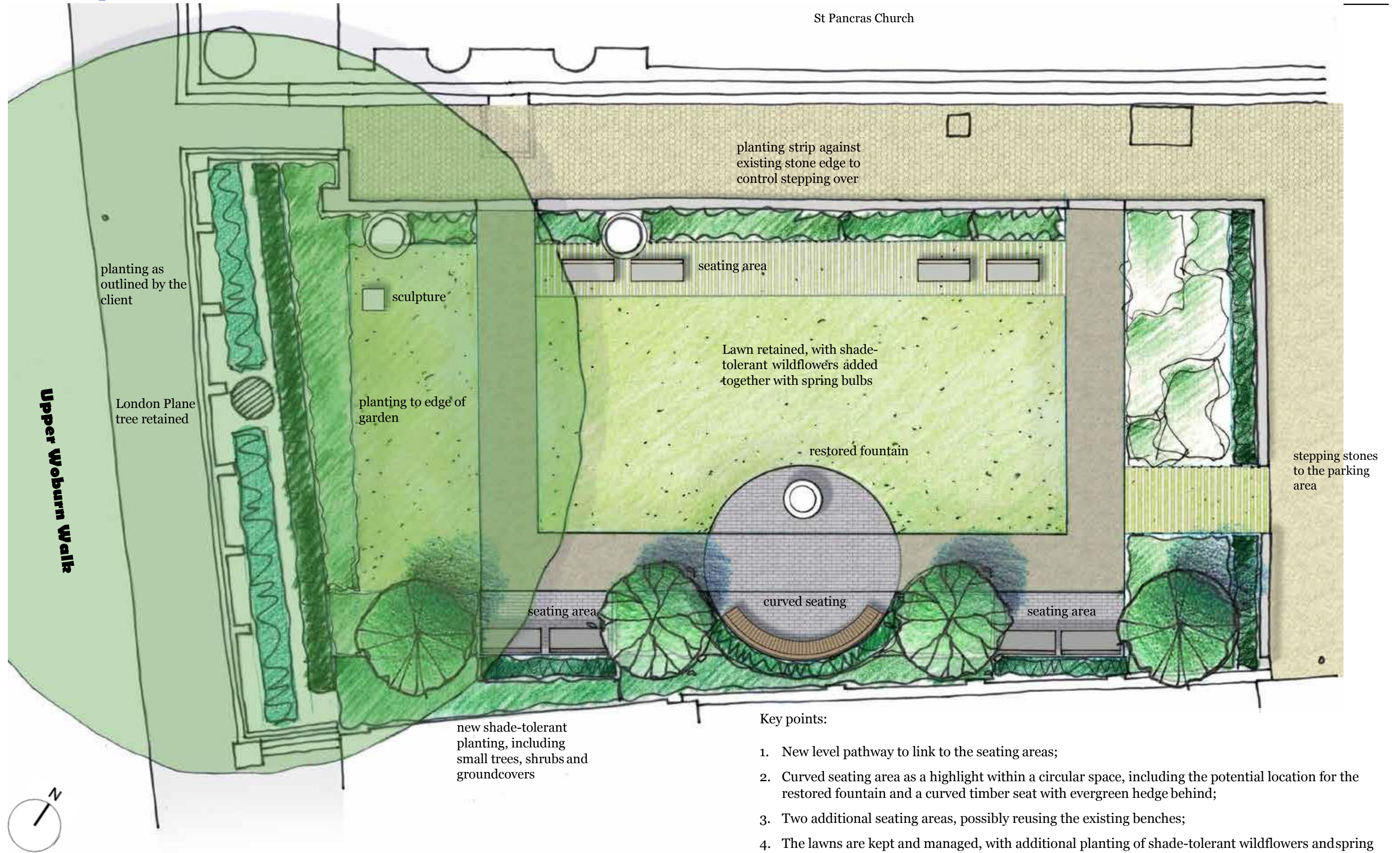
Example section of boundary planting along Upper Woburn Walk



Example elevation of boundary planting along Upper Woburn Walk

Extracts from the briefing document

Landscape Plan



Key points:

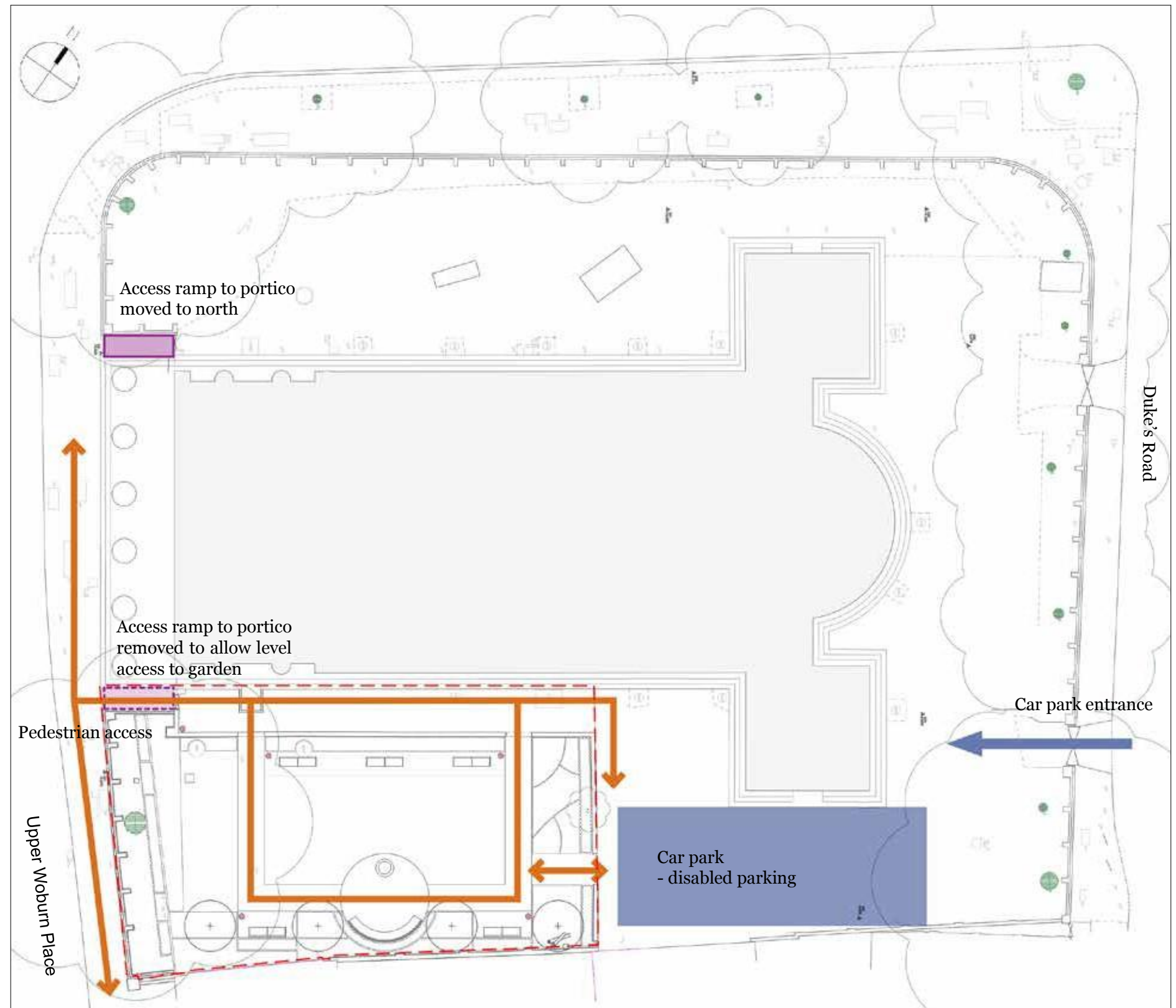
1. New level pathway to link to the seating areas;
2. Curved seating area as a highlight within a circular space, including the potential location for the restored fountain and a curved timber seat with evergreen hedge behind;
3. Two additional seating areas, possibly reusing the existing benches;
4. The lawns are kept and managed, with additional planting of shade-tolerant wildflowers and spring bulbs. The London Plane tree is retained and reinforced with additional planting.

Accessibility

The new garden space is for the use of both parishioners and the wider public, as the gardens will be open during the day. Primary access to the new garden space is from the footpath along Upper Woburn Place.

The ramp to the portico (and main church entrance) from Upper Woburn Place is proposed to be moved to the northern end of the portico, allowing level access from the footpath to Upper Woburn Place to the gravel pathway to the south of the church and in to the garden area. The existing granite upstands to the northern edge of the new garden act as a barrier to level access in to the garden, apart from an opening at the eastern end. We are proposing a second opening at the western end, with the new footpath access linking to these level openings. The existing gravel area is to be reinforced with a honeycomb reinforcing grid, to improve the stability of the gravel. These changes provide suitable level access to the whole garden area.

Vehicular access is controlled, and from the existing car park to the east of the new garden. The car park provides disabled parking spaces, and is accessed from Duke's Road. There are level routes from the car park in to the new garden space.



Heritage

St Pancras Parish Church

The church is a grade 1 listed building and sites within the designated Bloomsbury Conservation Area.

The Church itself forms an important part of the setting of Bloomsbury Conservation area. The Church dominates the corner of Upper Woburn Walk and Euston Road. The building is Greek Revival style, general plan and form influenced by St Martin-in-the-Fields, with rich detailing influenced by, and in some cases copied from, casts of the Erechtheum, Athens.

The proposed works will enhance the setting of the south garden of the church and will not interfere or touch the listed building. The intention is to increase public access and use of the gardens which will go some way to mitigate against the loss of public open space due to HS2 construction works. Proposals to change the siting of the disabled access ramp are being considered by the church and will be taken forward as a separate piece of work.

The Diocese of London is supportive of the proposal as well and St Pancras Lands Trust who owns the land surrounding the church. It is worth noting that Faculty permission is not required for these works due to ownership by St Pancras Lands Trust.

The proposed works/alterations are all in line with policy guidance contained within the local and national policies which clearly resist any development that causes harm to the historic environment and properties. The proposed works will enhance the historic character of the surroundings of the grade I listed building and the overall conservation area.

St James's Gardens Drinking Fountain

Within the proposal consideration has been given to include the grade II listed drinking fountain which was formally sited in St James's Gardens. Over 10 years ago the fountain was badly damaged by fire and removed from site. The fountain has since been kept in storage by Camden's Green Spaces Team. Due to HS2 construction works, St James's Gardens was permanently closed in 2017. One of the assurances Camden secured from HS2 Ltd was to restore the fountain and relocate locally.

Support has been garnered to relocate the restored fountain within the south garden of St Pancras Parish New Church once the garden works have been completed. This was felt the most appropriate location as St James's Gardens sites within the Parish boundary on St Pancras Church and it would add character and interest to the new garden design.



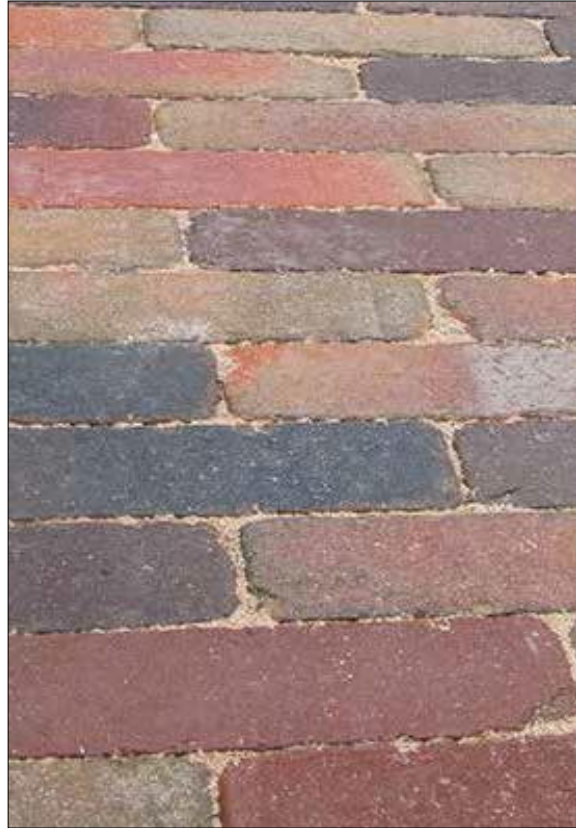
Artworks, Statues and Memorials

Having given thought to the proposed location of the fountain and referring to Camden's Artworks, Statues and Memorials Guidance. It is felt relocating the fountain within St Pancras Church Gardens is appropriate in terms of history and context. St James's Gardens (former burial ground) has been permanently closed due to HS2 construction. St James's Gardens sits within the Parish boundary of the church, therefore is closely affiliated with the closed gardens.

The fountain will help create a sense of identity to the church gardens as part of the improvement works and will become a point of interest for tourists and locals alike.

The proposal to relocate the fountain in the church was initially suggested by the local Vicar, Revd. Anne Stevens. Support has been received from The Diocese of London and St Pancras Lands Trust as well as Cllr Adam Harrison, Cabinet Member for Sustainable Camden. Due to the high running costs of having the fountain working and the limited funding available to restore the fountain, this proposal is to restore as an ornamental feature only.

Surfacing Materials



Dutch bricks



Stabilisation system with Cotswold gravel

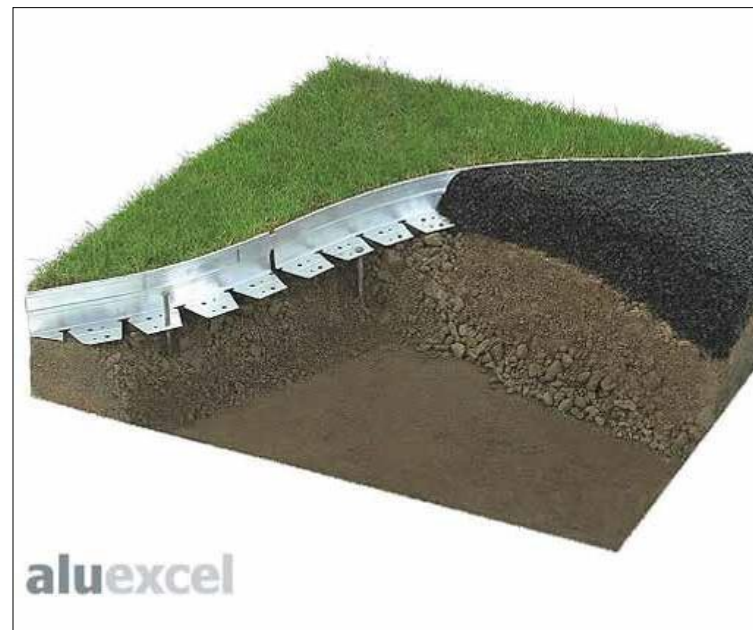


Resin-bound gravel footpath - porous surfacing to minimise impacts on tree roots

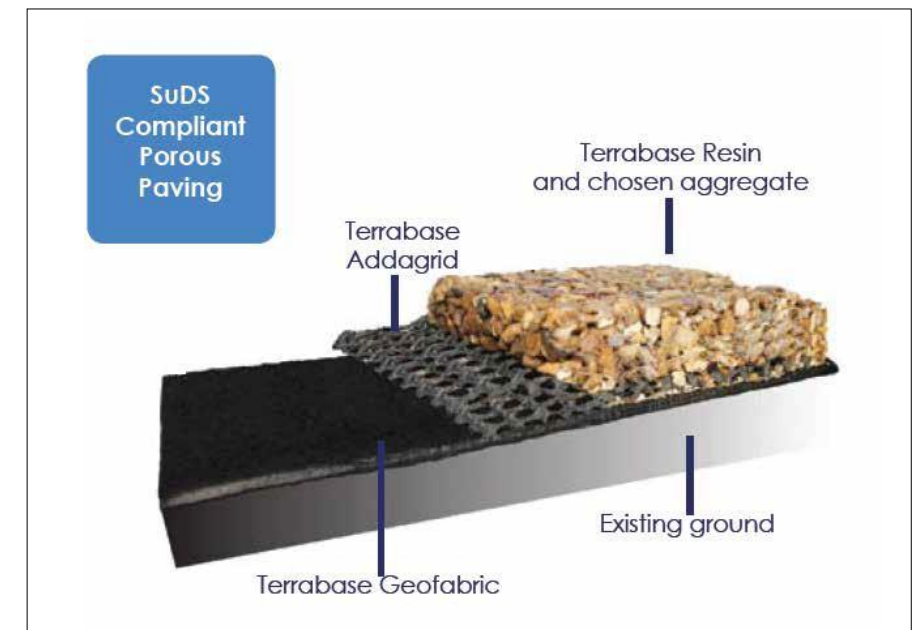
Simple palette of surfacing materials:

1. Pre-cast concrete linear blocks to the building entrance, and to paved areas adjacent to the new hall;
2. Porous resin-bound gravel as the main pathway, to minimise root disturbance;
3. Loose Limestone gravel to existing footway to the south of the church; this is to be reinforced with a honeycomb stabilisation system;
4. Dutch bricks to rectangular seating areas, and to the circular seating area.

The materials have been chosen to minimise their impacts on the root protection area of the existing London Plane. The resin-bound gravel is porous and is designed to have minimal dig; the timber edging is to be hand-dug, of minimal height and fixed with timber pegs to reduce impacts on roots.



Metal edging - allows a clean division between materials



Planting - Trees and Shrubs

Trees



Cercidiphyllum japonicum



Japanese Maple - *Acer palmatum* 'Osakazuki'



Sorbus hupehensis



Shrubs



x *Fatshedera lizei* 'Annemieke'



Viburnum burkwoodii



Cornus kousa 'Chinensis'



Mahonia x media 'Charity'



Sarcococca 'Winter Gem'



Ribes sanguineum 'White Icicle'

Planting - Herbaceous plants

Nectar plants



Anemone x hybrida 'Honorine Jobert'



Dryopteris filix-mas



Polypodium vulgare



Vinca minor 'Ralph Shugert'



Dryopteris affinis



Epimedium perralderianum



Polystichum setiferum



Epimedium 'Amber Queen'



Helleborus x hybrida



Pachysandra terminalis



Helleborus argutifolium

Planting - Hedges

Hedges



Yew hedge - *Taxus baccata*



'Tapestry' hedge



Holly - *Ilex aquifolium*

Planting - Roses & Wildflowers

Roses



Rosa 'Cerise Bouquet'



Rosa 'Blanc Double de Coubert'



Rosa 'Snow Carpet'



Rosa 'Worcestershire'

Wildflowers



Angelica sylvestris



Galium verum



Linaria vulgaris



Prunella vulgaris



Silene dioica



Teuchrium scorodonia

Enhancing Wildlife Value

There are a number of proposed enhancements to the wildlife value of the site.

The key enhancements are:

1. Enhancing the grassed area to be a shade-tolerant wildflower meadow; incorporation of native bulbs in to the meadow;
2. Lines of native hedges, including Beech (next to railings to Upper Woburn Place), Yew and Holly;
3. Possible incorporation of a 'Tapestry hedge' using a range of native species, close to Upper Woburn Place;
4. Native shrubs, groundcovers and climbers, many as sources of nectar for butterflies and other insects;
5. Inclusion of log piles, mason bee boxes and lacewing boxes as deadwood habitat for insects, within the planting. These are to be placed to allow visitors to interact with them;
6. Incorporation of bird and bat boxes where feasible.



Log piles



Nectar plants for butterflies



Ornamental bird box



Yew hedge



Field Rose - *Rosa arvensis*



Guelder Rose - *Viburnum opulus*



Bird Box



Lacewing Box



Mason Bee Box