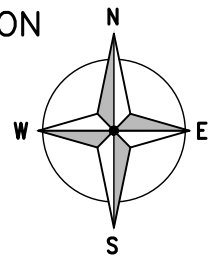
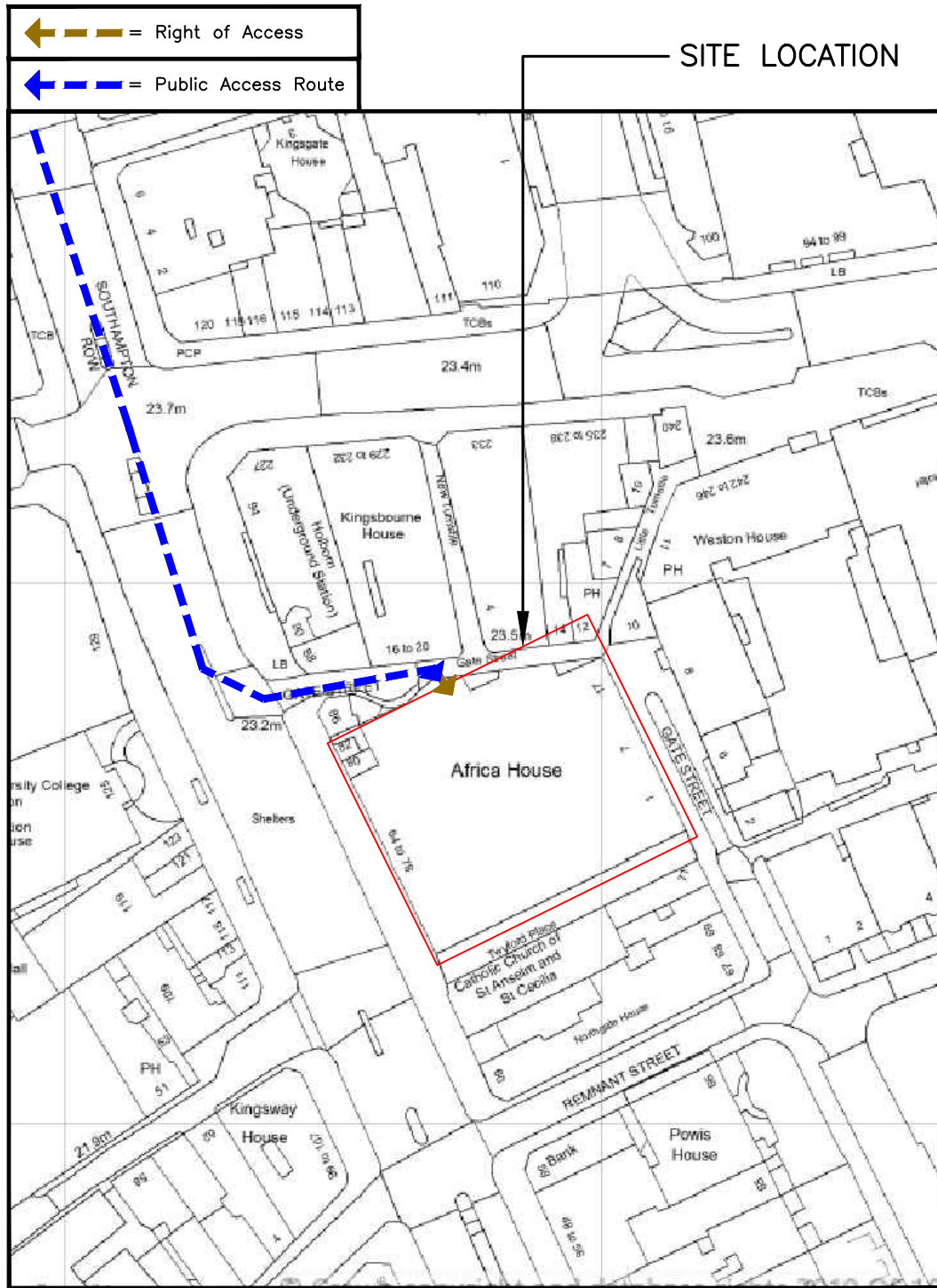


SITE LOCATION



0 1km 2km
SCALE 1:50000

SITE LOCATION
(Scale 1:50000)



SITE LOCATION

181500

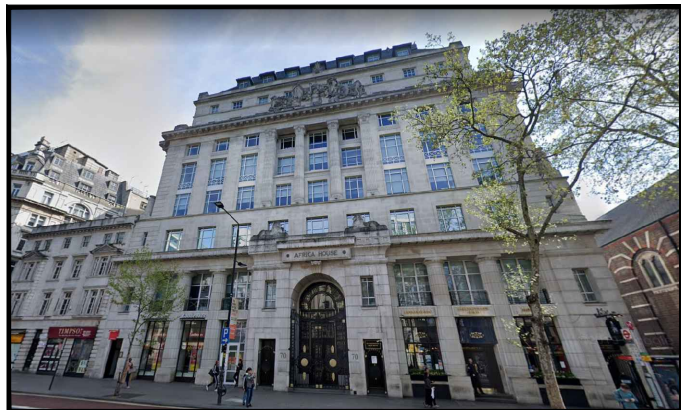
181400

530500

530600

DETAILED SITE LOCATION
(Scale 1:1250)

0 50m 100m 150m
SCALE 1:1250



SITE PHOTOGRAPH

ALL DIMENSIONS ARE IN mm UNLESS NOTED OTHERWISE

N.G.R E: 530581 N: 181474

DIRECTIONS TO SITE: HEAD EAST ON M4 TOWARDS DORCHESTER GROVE/A316, AFTER 92ft TURN LEFT ONTO DORCHESTER GROVE/A316 AND CONTINUE TO FOLLOW A316, AFTER 0.5MILE TURN RIGHT ONTO CHISWICK HIGH RD/A315, AND THEN TURN LEFT AFTER 0.3MILES ONTO GOLDHAWK RD/A402, AFTER 0.2MILES AT THE ROUNDABOUT, TAKE THE 2nd EXIST AND STAY ON GOLDHAWK RD/A402, TAKE SLIGHT LEFT ONTO STEPHERD'S BUSH GREEN/A402/A4020, CONTINUE STRAIGHT TO STAY ON UXBRIDGE RD/A402/A4020, AFTER 456ft AT THE ROUNDABOUT, TAKE THE 1st EXIT ONTO W CROSS RTE/A3220, AFTER 0.8MILES AT THE ROUNDABOUT, TAKE THE 2ND EXIT ONTO THE A40 RAMP, AFTER 0.3MILES MERGE WITH WESTWAY/A40, TAKE THE EXIT TOWARD WEST END PADDINGTON, CONTINUE ONTO WESTBOURNE BRIDGE FOR 0.1MILES, CONTINUE ONTO WESTBOURNE TERRACE, TURN LEFT ONTO BISHOP'S BRIDGE RD/A4206, USE THE MIDDLE LANE TO TURN LEFT ONTO HARROW RD/A404, CONTINUE STRAIGHT TO STAY ON HARROW RD/A404, CONTINUE STRAIGHT ONTO MARYLEBONE RD/MARYLEBONE FLYOVER/A501 FOR 0.2MILES, CONTINUE STRAIGHT TO STAY ON MARYLEBONE RD/A501, AFTER 0.5MILES KEEP RIGHT TO CONTINUE ON EUSTON RD/A501, CONTINUE STRAIGHT TO STAY ON EUSTON RD/A501 FOR 0.1MILES, TURN RIGHT ONTO UPPER WOBURN PL/A4200, AFTER 0.9MILES USE ANY LANE TO TURN LEFT ONTO GATE ST

A	Issued for Approval	NVN	YD	07.08.19
REV	MODIFICATION	BY	CH	DATE

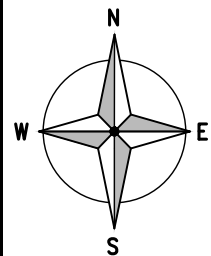


Cell Name		Opt.
AFRICA HOUSE		-
Cell ID No		
CORNERSTONE	TEF	VF
300360	-	17049

Site Address / Contact Details		
AFRICA HOUSE 70 KINGSWAY LONDON WC2B6AH		

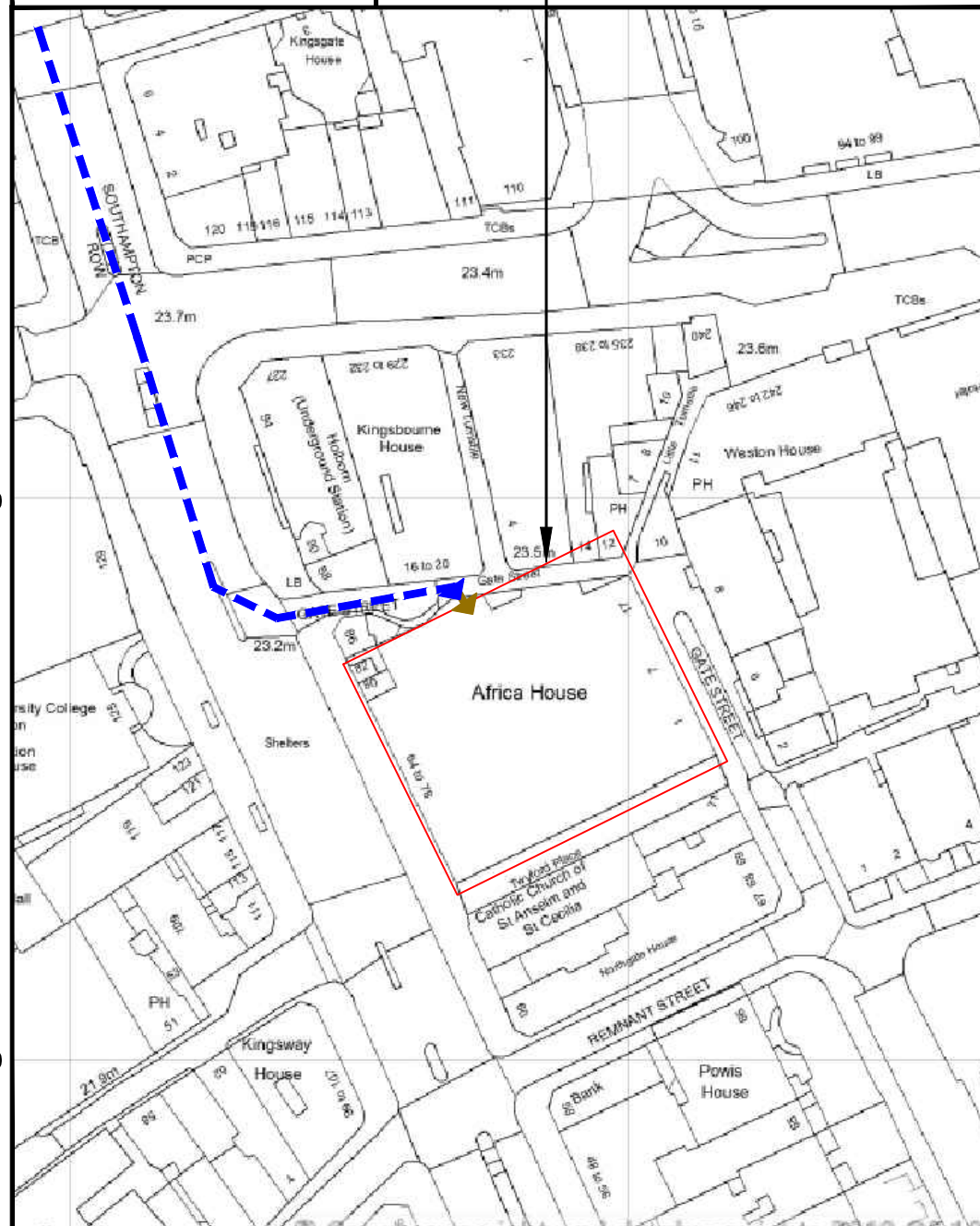
Drawing Title: SITE LOCATION MAPS				
Purpose of issue: PLANNING				Dwg Rev:
Drawing Number: 100				A
Surveyed By: SA		Original Sheet Size: A3		Pack Issue:
Drawn: NVN	Date: 07.08.19	Checked: YD	Date: 07.08.19	A

The drawings comply with TEF & Vodafone Standard ICNIRP guidelines.
Designed in accordance with CORNERSTONE document: SDN0008

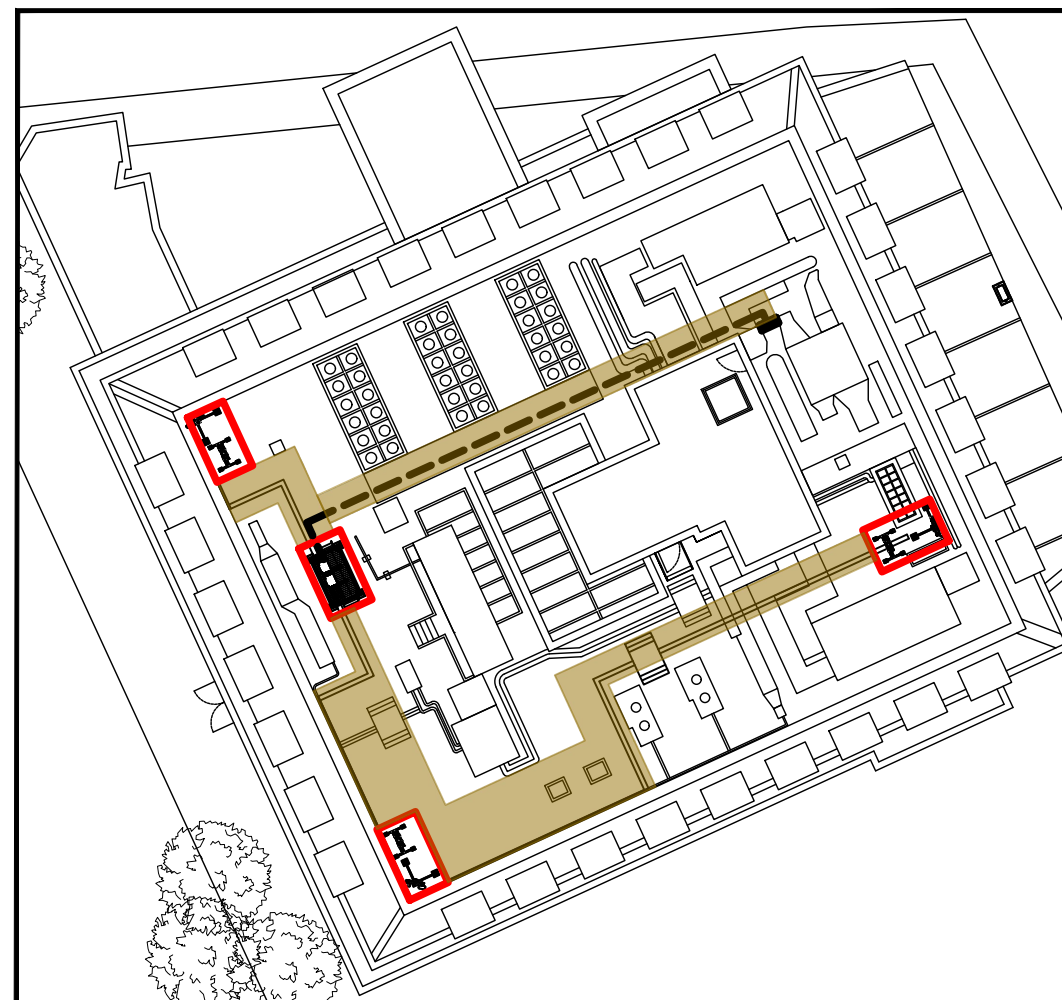


← = Right of Access
 ← = Public Access Route

SITE LOCATION



DETAILED SITE LOCATION
 (Scale 1:1250)



OVERALL CALUATION PLAN
 (Scale 1:500)



ALL DIMENSIONS ARE IN mm UNLESS NOTED OTHERWISE

N.G.R | E: 530581 N: 181474

SITE ACCESS KEY

- PUBLIC ACCESS ROUTE
- EQUIPMENT SPACE
- EQUIPMENT AIRSPACE
- ACCESS SPACE
- SET-DOWN SPACE
- PROPOSED INTERNAL ACCESS
- PROPOSED TRANSMISSION SUPPLY
- PROPOSED AC SUPPLY

TOTAL AREA OF EQUIPMENT SPACE = 56.47 m²

TOTAL AREA OF ACCESS SPACE = 476.56 m²

TOTAL AREA OF SET-DOWN SPACE = 000.00 m²

A	Issued for Approval	NVN	YD	07.08.19
REV	MODIFICATION	BY	CH	DATE



Cell Name	Opt.
AFRICA HOUSE	-

Cell ID No		
CORNERSTONE	TEF	VF
300360	-	17049

Site Address / Contact Details
 AFRICA HOUSE
 70 KINGSWAY
 LONDON
 WC2B6AH

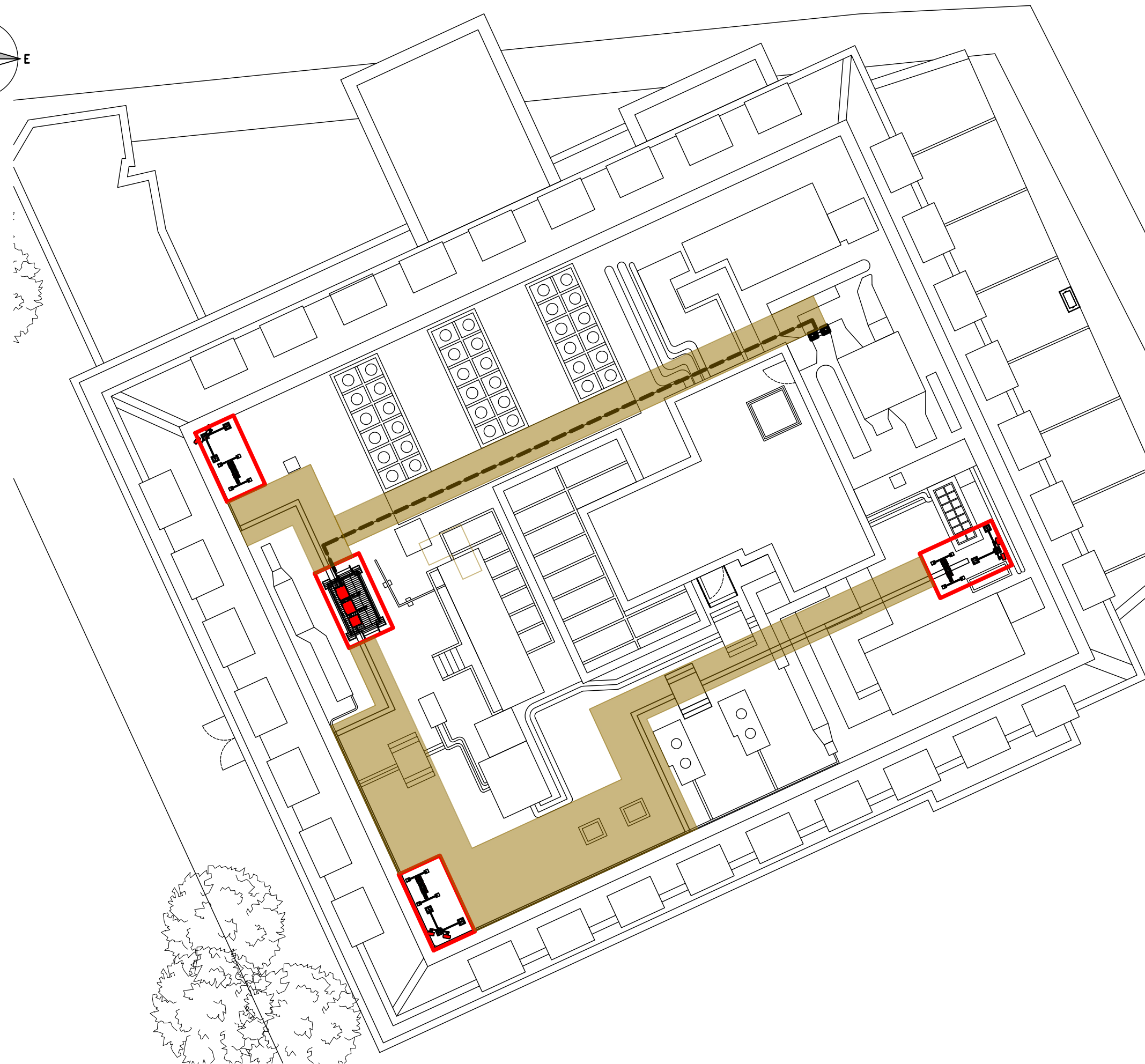
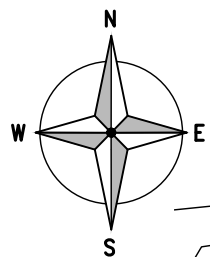
Drawing Title:
 AGREEMENT DRAWING

Purpose of issue:
 PLANNING

Drawing Number:
 101

Surveyed By: SA Original Sheet Size: A3 Pack Issue:

Drawn: NVN Date: 07.08.19 Checked: YD Date: 07.08.19 A



OVERALL VALUATION DRAWING PLAN
(1:250)

ALL DIMENSIONS ARE IN mm UNLESS NOTED OTHERWISE

N.G.R | E: 530581 N: 181474

SITE ACCESS KEY

- PUBLIC ACCESS ROUTE
- EQUIPMENT SPACE
- EQUIPMENT AIRSPACE
- ACCESS SPACE
- SET-DOWN SPACE
- PROPOSED INTERNAL ACCESS
- PROPOSED TRANSMISSION SUPPLY
- PROPOSED AC SUPPLY

TOTAL AREA OF EQUIPMENT SPACE = 56.47 m²

TOTAL AREA OF ACCESS SPACE = 476.56 m²

TOTAL AREA OF SET-DOWN SPACE = 000.00 m²

A	Issued for Approval	NVN	YD	07.08.19
REV	MODIFICATION	BY	CH	DATE



Cell Name	Opt.
AFRICA HOUSE	-

Cell ID No		
CORNERSTONE	TEF	VF
300360	-	17049

Site Address / Contact Details
AFRICA HOUSE
70 KINGSWAY
LONDON
WC2B6AH

Drawing Title: VALUATION DRAWING PLAN

Purpose of issue: PLANNING Dwg Rev:

Drawing Number: 102 A

Surveyed By: SA Original Sheet Size: A3 Pack Issue:

Drawn: NVN Date: 07.08.19 Checked: YD Date: 07.08.19 A

ALL DIMENSIONS ARE IN mm UNLESS NOTED OTHERWISE

N.G.R | E: 530581 N: 181474

SITE ACCESS KEY

- PUBLIC ACCESS ROUTE
- EQUIPMENT SPACE
- EQUIPMENT AIRSPACE
- ACCESS SPACE
- SET-DOWN SPACE
- PROPOSED INTERNAL ACCESS
- PROPOSED TRANSMISSION SUPPLY
- PROPOSED AC SUPPLY

TOTAL AREA OF EQUIPMENT SPACE = 56.47 m²

TOTAL AREA OF ACCESS SPACE = 476.56 m²

TOTAL AREA OF SET-DOWN SPACE = 000.00 m²

A	Issued for Approval	NVN	YD	07.08.19
REV	MODIFICATION	BY	CH	DATE



Cell Name	Opt.
AFRICA HOUSE	-

Cell ID No		
CORNERSTONE	TEF	VF
300360	-	17049

Site Address / Contact Details

AFRICA HOUSE
70 KINGSWAY
LONDON
WC2B6AH

Drawing Title: VALUATION ELEVATION

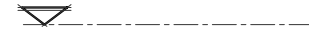
Purpose of issue: PLANNING Dwg Rev: A

Drawing Number: 103 A

Surveyed By: SA Original Sheet Size: A3 Pack Issue: A

Drawn: NVN Date: 07.08.19 Checked: YD Date: 07.08.19 A

ROOF LEVEL +36.0m AGL

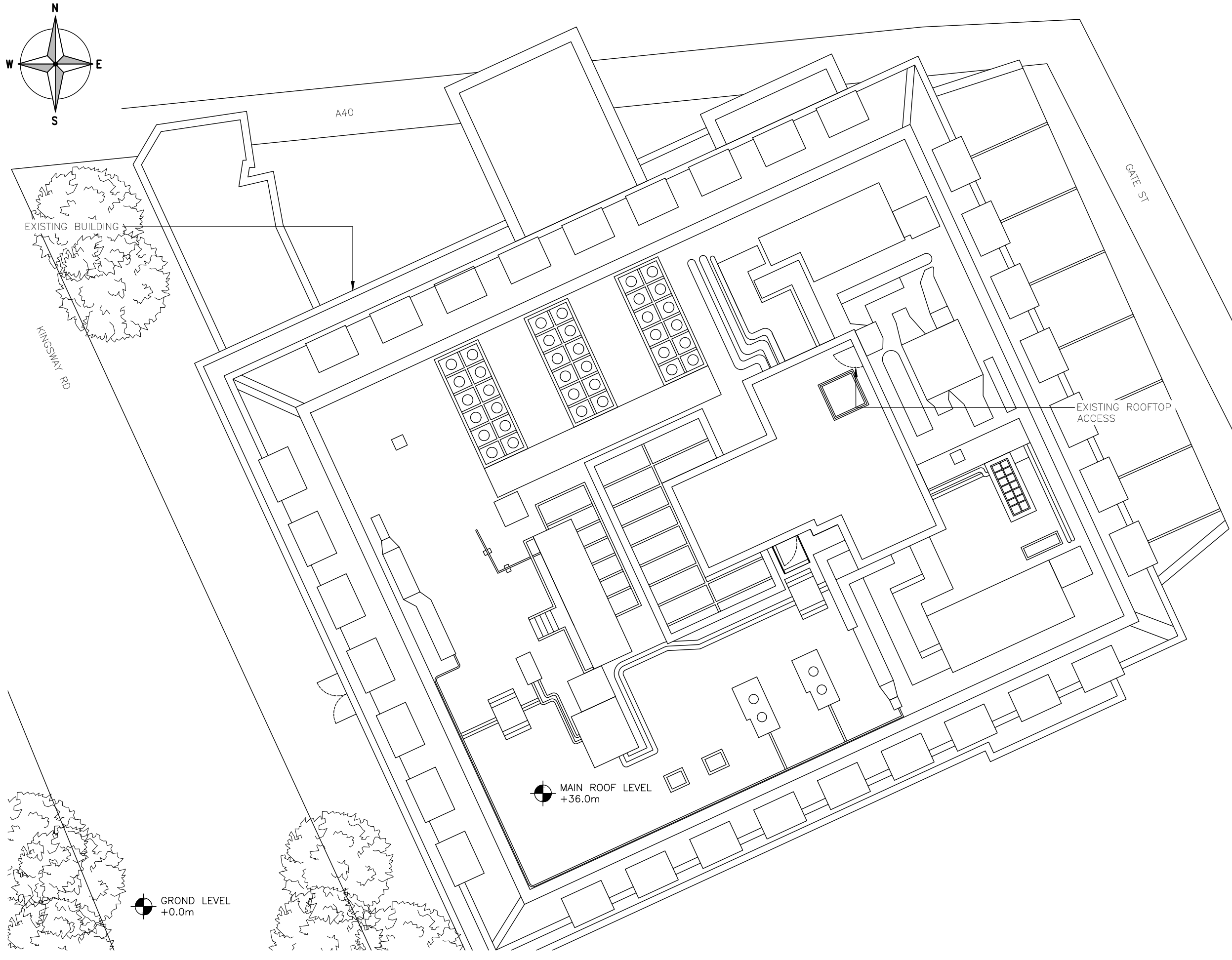


EXISTING ACCESS UPTO MAIN ROOF LEVEL

±0.0 G.L.



VALUATION ELEVATION
(1:200)



ALL DIMENSIONS ARE IN mm UNLESS NOTED OTHERWISE

N.G.R | E: 530581 | N: 181474

NOTES:

A	Issued for Approval	NVN	YD	07.08.19
REV	MODIFICATION	BY	CH	DATE



Cell Name	Opt.
AFRICA HOUSE	-

Cell ID No		
CORNERSTONE	TEF	VF
300360	-	17049

Site Address / Contact Details
 AFRICA HOUSE
 70 KINGSWAY
 LONDON
 WC2B6AH

Drawing Title: EXISTING SITE PLAN

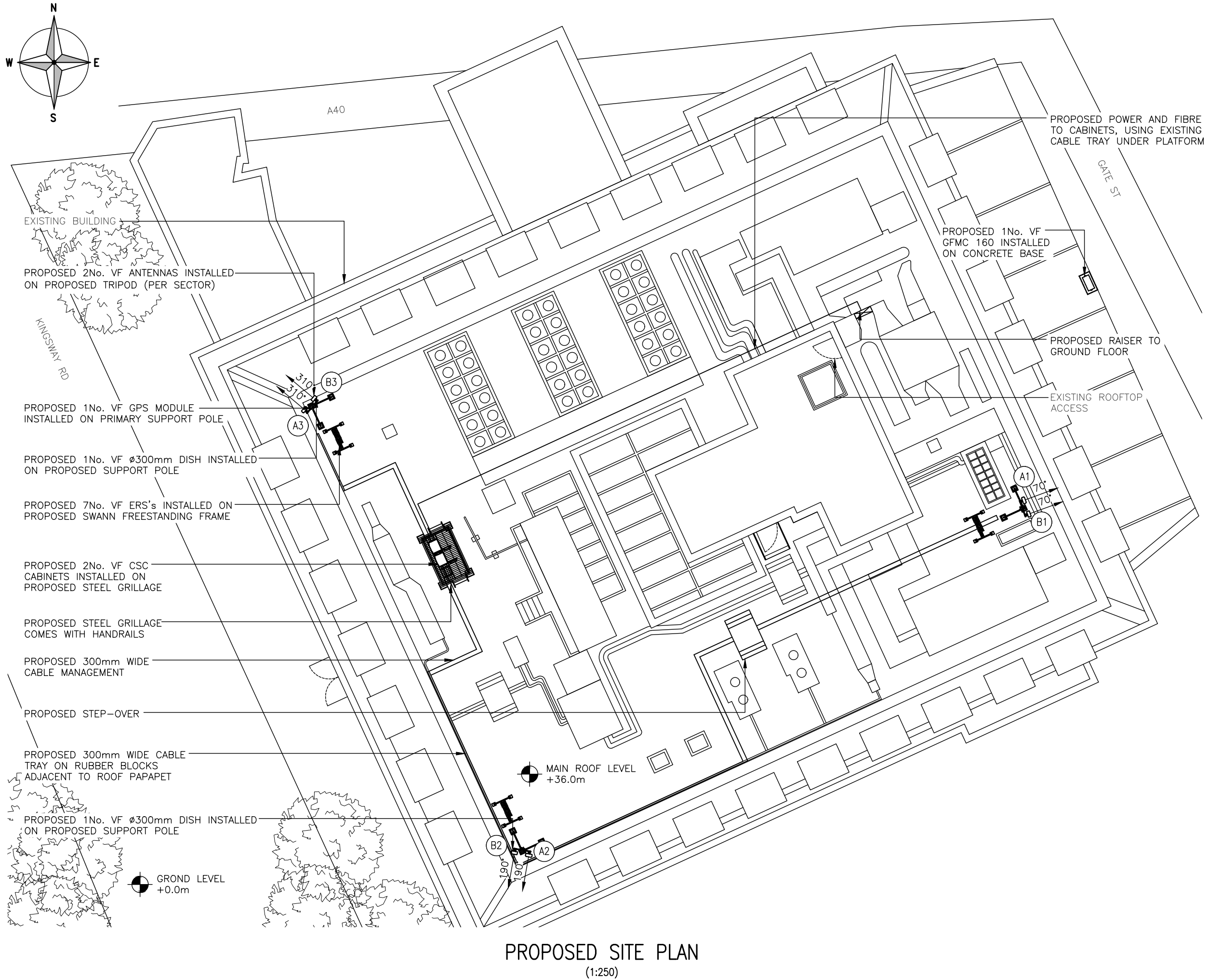
Purpose of issue:	PLANNING	Dwg Rev:
-------------------	----------	----------

Drawing Number:	200	A
-----------------	-----	---

Surveyed By:	SA	Original Sheet Size:	A3	Pack Issue:
--------------	----	----------------------	----	-------------

Drawn:	NVN	Date:	07.08.19	Checked:	YD	Date:	07.08.19	A
--------	-----	-------	----------	----------	----	-------	----------	---

EXISTING SITE PLAN
(1:250)



PROPOSED SITE PLAN
(1:250)

ALL DIMENSIONS ARE IN mm UNLESS NOTED OTHERWISE

N.G.R | E: 530581 | N: 181474

NOTES:

NOTE:
LIGHTING RODS IN FRONT OF ANTENNAS TO BE REMOVED. STEELWORK TO HAVE LIGHTING SPIKE AT TOP OF POLE
ANTENNAS TO BE PAINTED TO MATCH THE ROOF (MANSARD ROOF)

A	Issued for Approval	NVN	YD	07.08.19
REV	MODIFICATION	BY	CH	DATE



Cell Name		Opt.
AFRICA HOUSE		-
Cell ID No		
CORNERSTONE	TEF	VF
300360	-	17049

Site Address / Contact Details

AFRICA HOUSE
70 KINGSWAY
LONDON
WC2B6AH

Drawing Title: PROPOSED SITE PLAN			
Purpose of issue: PLANNING			Dwg Rev:
Drawing Number: 201			A
Surveyed By: SA		Original Sheet Size: A3	
Drawn: NVN	Date: 07.08.19	Checked: YD	Date: 07.08.19
			Pack Issue: A

The drawings comply with TEF & Vodafone Standard ICNIRP guidelines.
Designed in accordance with CORNERSTONE document: SDN0008

ALL DIMENSIONS ARE IN mm UNLESS NOTED OTHERWISE

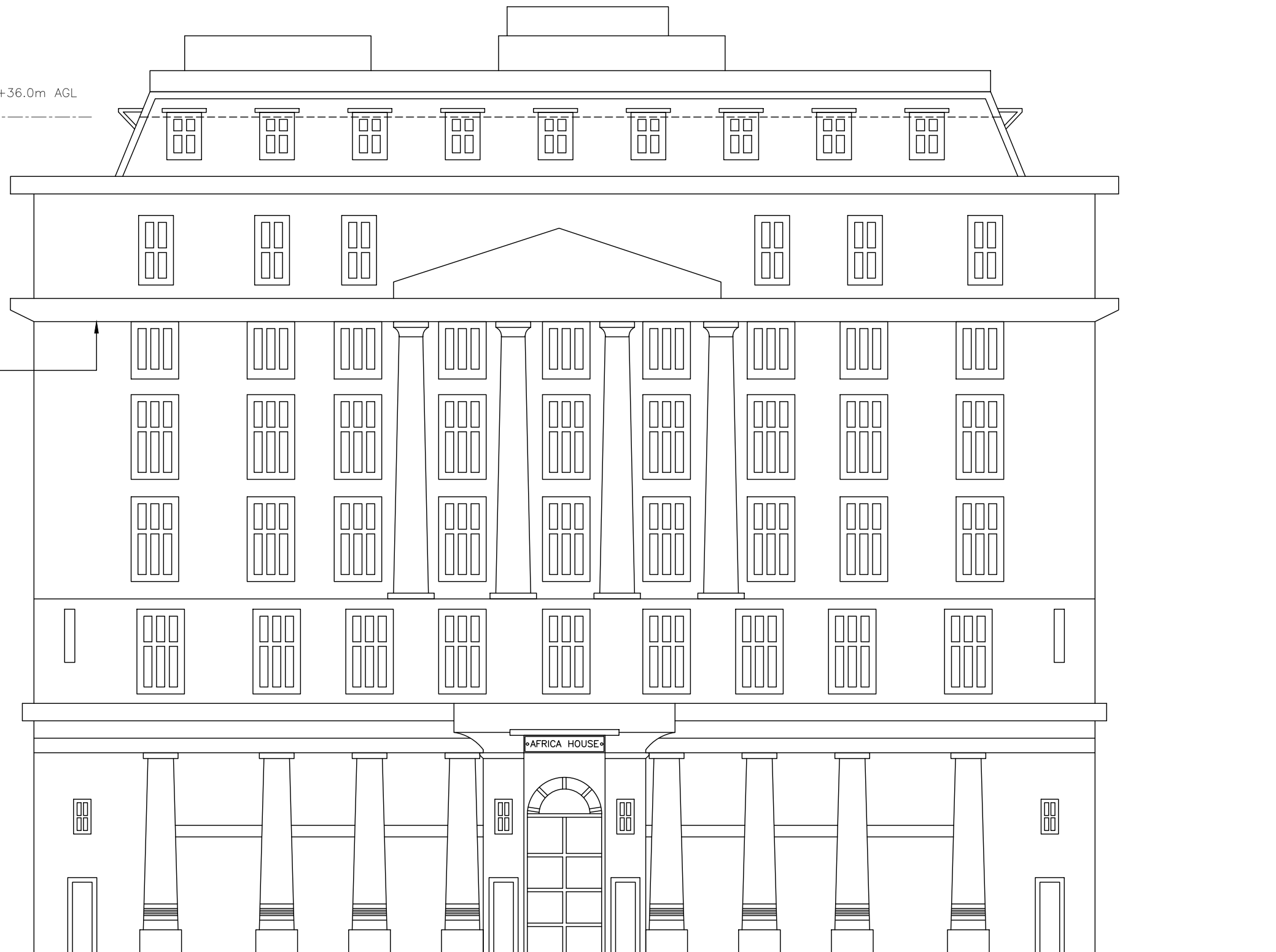
N.G.R | E: 530581 | N: 181474

NOTES:

ROOF LEVEL +36.0m AGL

EXISTING BUILDING

±0.0 G.L.



EXISTING WEST ELEVATION
(1:200)

A	Issued for Approval	NVN	YD	07.08.19
REV	MODIFICATION	BY	CH	DATE



Cell Name	Opt.
AFRICA HOUSE	-

Cell ID No		
CORNERSTONE	TEF	VF
300360	-	17049

Site Address / Contact Details		
AFRICA HOUSE 70 KINGSWAY LONDON WC2B6AH		

Drawing Title: EXISTING SITE ELEVATION

Purpose of issue: PLANNING

Drawing Number: 300

Surveyed By: SA Original Sheet Size: A3

Drawn: NVN Date: 07.08.19 Checked: YD Date: 07.08.19

Dwg Rev: A

Pack Issue: A

ALL DIMENSIONS ARE IN mm UNLESS NOTED OTHERWISE

N.G.R | E: 530581 | N: 181474

NOTES:

NOTE:
LIGHTING RODS IN FRONT OF ANTENNAS TO BE REMOVED. STEELWORK TO HAVE LIGHTING SPIKE AT TOP OF POLE ANTENNAS TO BE PAINTED TO MATCH THE ROOF (MANSARD ROOF)

PROPOSED 2No. VF ANTENNAS
INSTALLED ON PROPOSED
TRIPOD (PER SECTOR)

PROPOSED 1No. VF ø300mm
DISH INSTALLED ON PROPOSED
SUPPORT POLE

C/L OF PROPOSED VF DISH
+39.69m AGL

ROOF LEVEL +36.0m AGL

TOP OF PROPOSED VF ANTENNAS
+41.6m AGL

U/S OF PROPOSED VF ANTENNAS
+39.5m AGL

U/S OF PROPOSED VF ANTENNAS
+40.8m AGL

PROPOSED 1No. VF ø300mm
DISH INSTALLED ON PROPOSED
SUPPORT POLE

PROPOSED 7No. VF ERS's INSTALLED ON
PROPOSED SWANN FREESTANDING FRAME
(PER SECTOR)

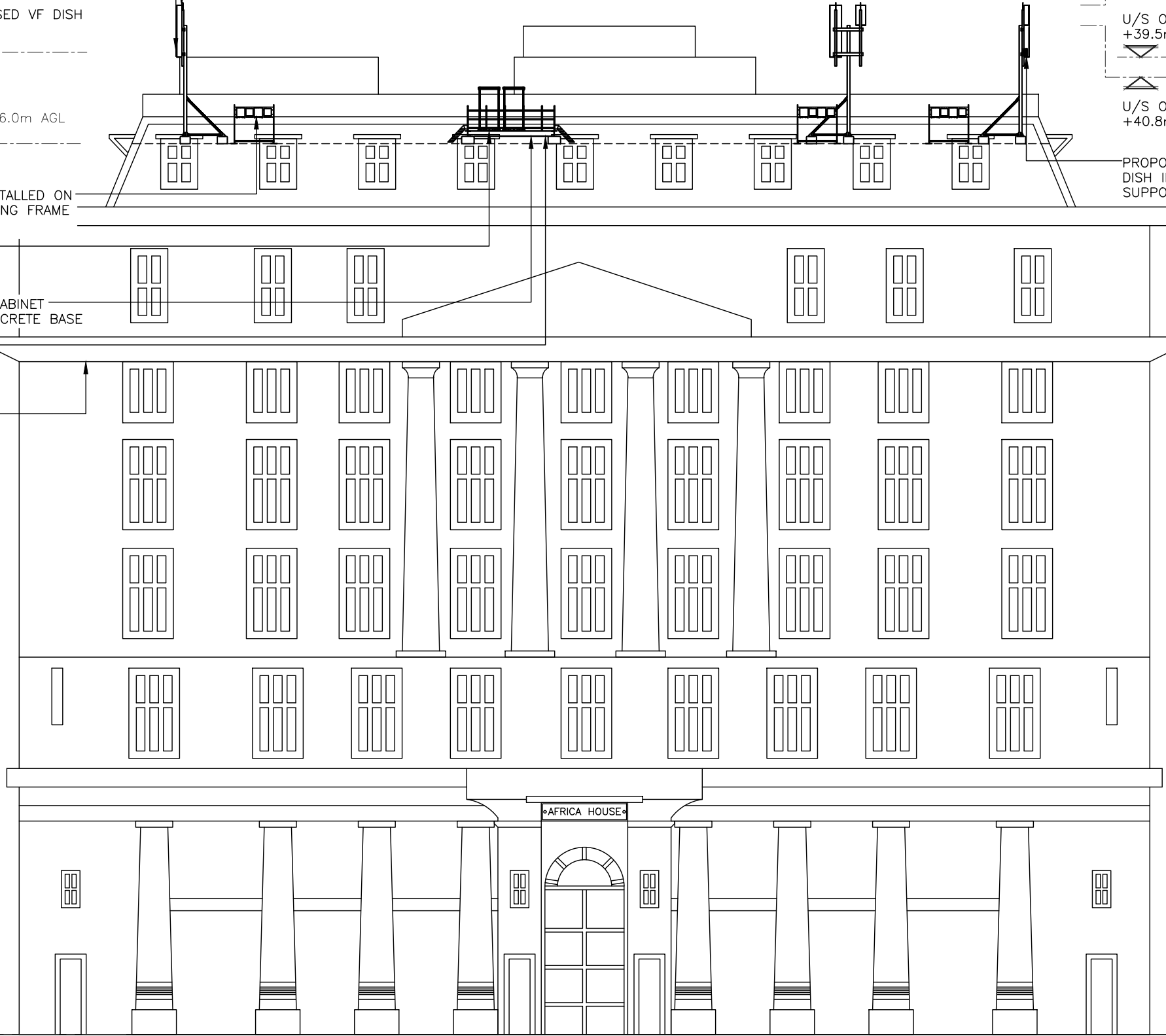
PROPOSED 2No. VF CSC
CABINETS INSTALLED ON
PROPOSED CONCRETE BASE

PROPOSED 1No. VF FUTURE CABINET
INSTALLED ON PROPOSED CONCRETE BASE

PROPOSED GRILLAGE

EXISTING BUILDING

±0.0 G.L.



PROPOSED WEST ELEVATION
(1:200)

A	Issued for Approval	NVN	YD	07.08.19
REV	MODIFICATION	BY	CH	DATE



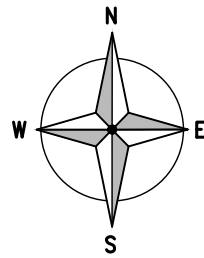
Cell Name	Opt.
AFRICA HOUSE	-

Cell ID No		
CORNERSTONE	TEF	VF
300360	-	17049

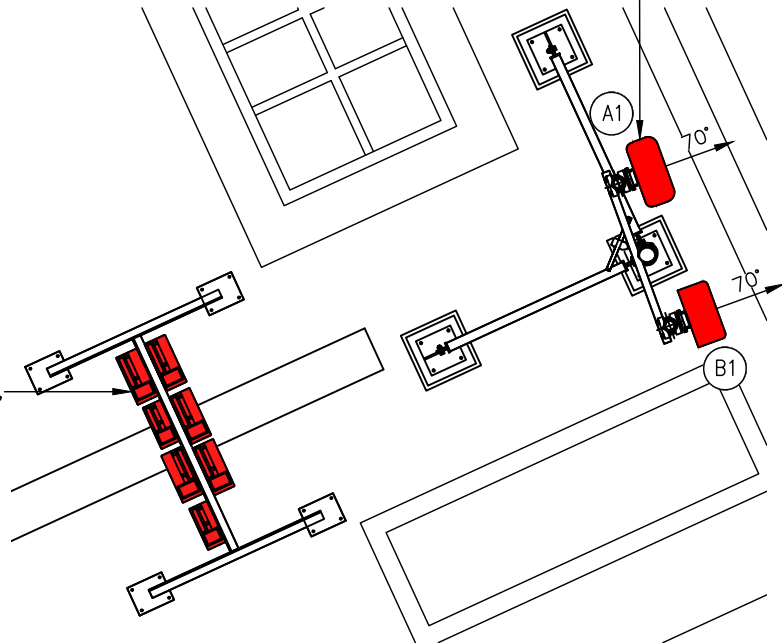
Site Address / Contact Details		
AFRICA HOUSE 70 KINGSWAY LONDON WC2B6AH		

Drawing Title: PROPOSED SITE ELEVATION				
Purpose of issue: PLANNING				Dwg Rev: A
Drawing Number: 301				A
Surveyed By: SA		Original Sheet Size: A3		Pack Issue: A
Drawn: NVN	Date: 07.08.19	Checked: YD	Date: 07.08.19	A

The drawings comply with TEF & Vodafone Standard ICNIRP guidelines.
Designed in accordance with CORNERSTONE document: SDN0008



PROPOSED 1No. VF HUAWEI AOC4518R8v06 & 1No. ERICSSON AIR 6488 INSTALLED ON PROPOSED ANTENNA SUPPORT POLE



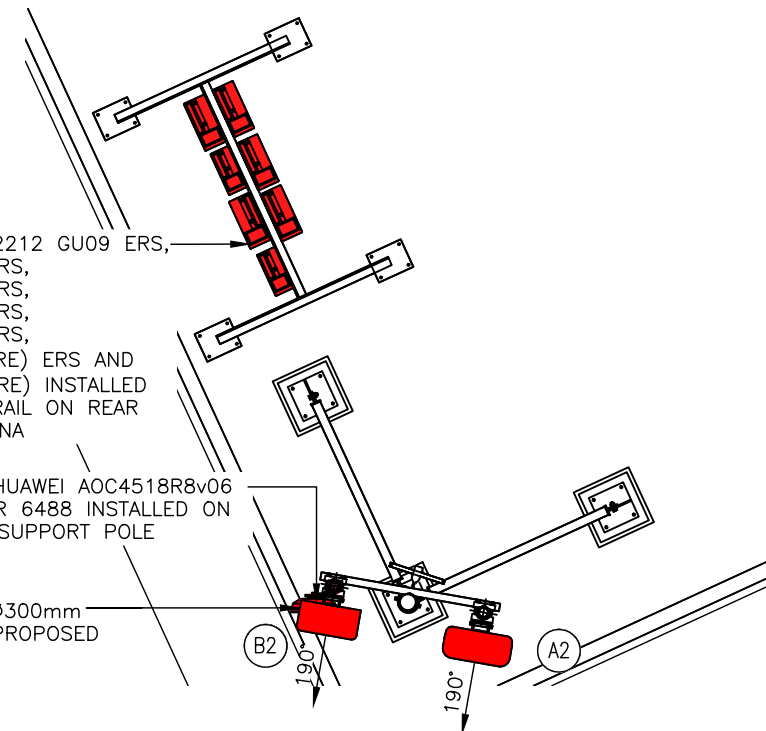
PROPOSED SECTOR 1 ANTENNA PLAN
(1:50)

PROPOSED 1No. VF 2212 GU09 ERS,
1No. VF 2217 L08 ERS,
1No. VF 2012 L14 ERS,
1No. VF 4415 L26 ERS,
1No. VF 4415 L21 ERS,
1No. VF 2600 (FUTURE) ERS AND
1No. 700 ERS (FUTURE) INSTALLED
ON PROPOSED ERS RAIL ON REAR
OF PROPOSED ANTENNA

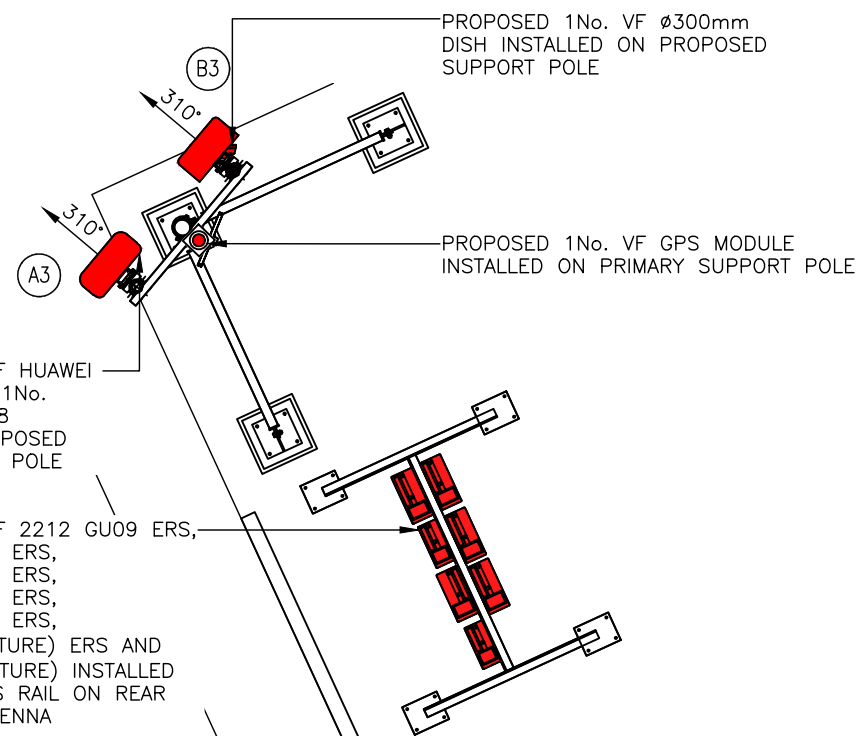
PROPOSED 1No. VF 2212 GU09 ERS,
1No. VF 2217 L08 ERS,
1No. VF 2012 L14 ERS,
1No. VF 4415 L26 ERS,
1No. VF 4415 L21 ERS,
1No. VF 2600 (FUTURE) ERS AND
1No. 700 ERS (FUTURE) INSTALLED
ON PROPOSED ERS RAIL ON REAR
OF PROPOSED ANTENNA

PROPOSED 1No. VF HUAWEI AOC4518R8v06 & 1No. ERICSSON AIR 6488 INSTALLED ON PROPOSED ANTENNA SUPPORT POLE

PROPOSED 1No. VF ϕ 300mm
DISH INSTALLED ON PROPOSED
SUPPORT POLE



PROPOSED SECTOR 2 ANTENNA PLAN
(1:50)



PROPOSED SECTOR 3 ANTENNA PLAN
(1:50)

PROPOSED 1No. VF HUAWEI AOC4518R8v06 & 1No. ERICSSON AIR 6488 INSTALLED ON PROPOSED ANTENNA SUPPORT POLE

PROPOSED 1No. VF 2212 GU09 ERS,
1No. VF 2217 L08 ERS,
1No. VF 2012 L14 ERS,
1No. VF 4415 L26 ERS,
1No. VF 4415 L21 ERS,
1No. VF 2600 (FUTURE) ERS AND
1No. 700 ERS (FUTURE) INSTALLED
ON PROPOSED ERS RAIL ON REAR
OF PROPOSED ANTENNA

PROPOSED 1No. VF ϕ 300mm
DISH INSTALLED ON PROPOSED
SUPPORT POLE

PROPOSED 1No. VF GPS MODULE
INSTALLED ON PRIMARY SUPPORT POLE

COLOUR KEY

SHARED EQUIPMENT	
VF ALLOCATED EQUIPMENT	
TEF ALLOCATED EQUIPMENT	

ALL DIMENSIONS ARE IN mm UNLESS NOTED OTHERWISE

N.G.R | E: 530581 | N: 181474

NOTES:

A	Issued for Approval	NVN	YD	07.08.19
REV	MODIFICATION	BY	CH	DATE



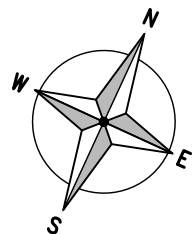
Cell Name	Opt.
AFRICA HOUSE	-

Cell ID No		
CORNERSTONE	TEF	VF
300360	-	17049

Site Address / Contact Details		
AFRICA HOUSE 70 KINGSWAY LONDON WC2B6AH		

Drawing Title: ANTENNA PLAN				
Purpose of issue: PLANNING				Dwg Rev:
Drawing Number: 400				A
Surveyed By: SA		Original Sheet Size: A3		Pack Issue:
Drawn: NVN	Date: 07.08.19	Checked: YD	Date: 07.08.19	A

FOR SITE DESIGN DEPENDENCIES REFER TO DRAWING 502



MAIN ROOF LEVEL
+36.0m

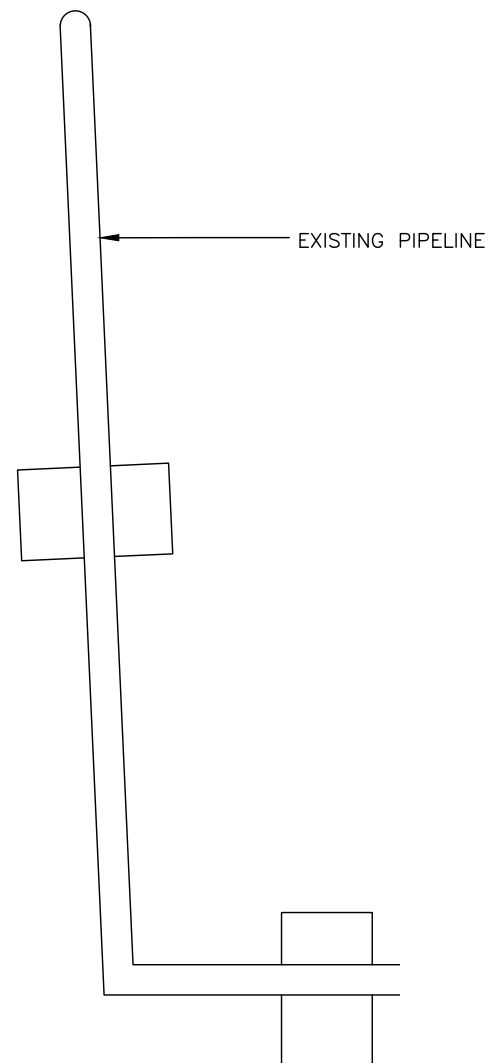
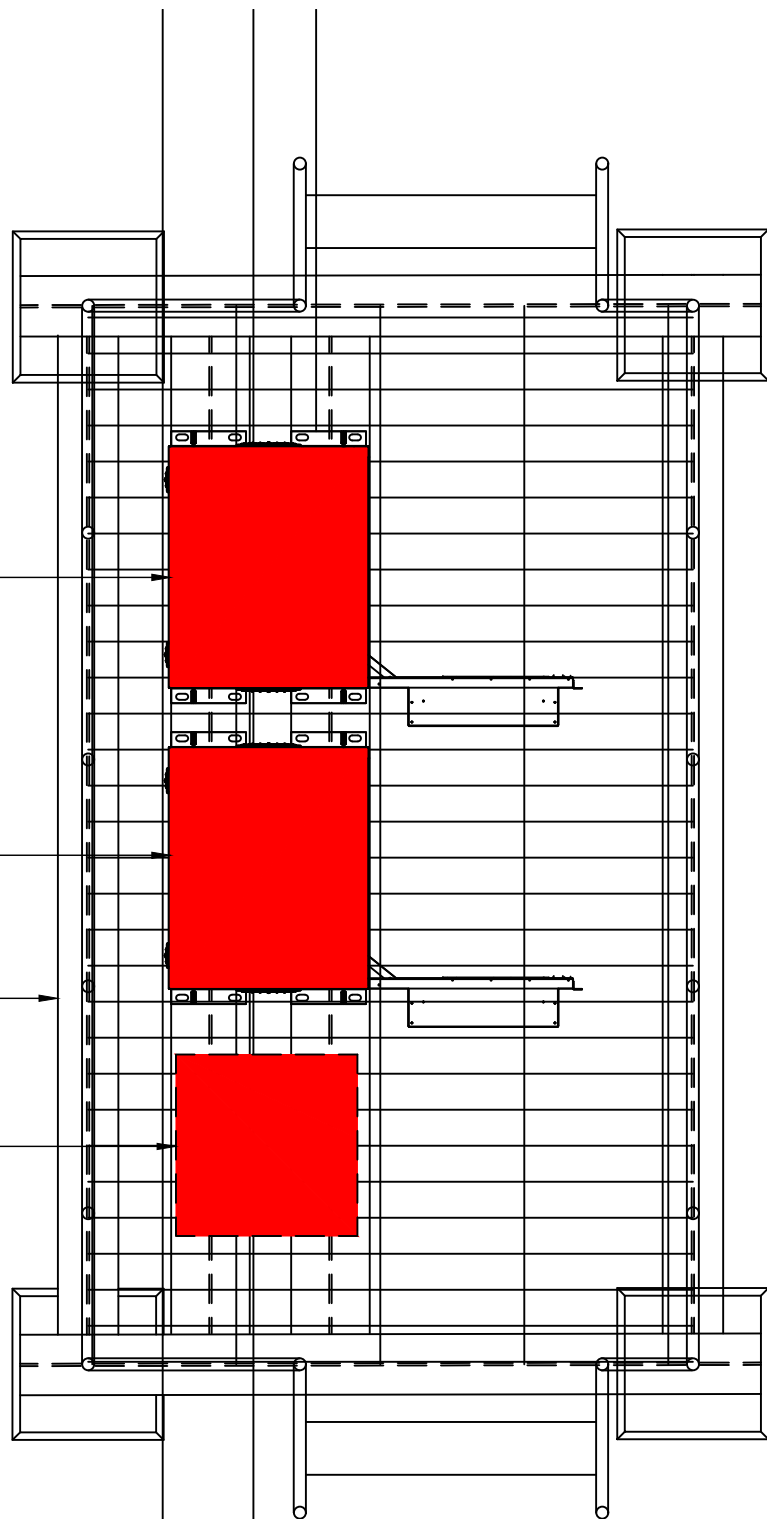
PROPOSED 1No. VF CSC
CABINET INSTALLED ON
PROPOSED STEEL GRILLAGE

PROPOSED 1No. VF CSC
CABINET INSTALLED ON
PROPOSED STEEL GRILLAGE

PROPOSED STEEL GRILLAGE
C/W HANDRAILS

PROPOSED 1No. VF FUTURE
CABINET INSTALLED ON
PROPOSED STEEL GRILLAGE

PROPOSED 300mm WIDE
CABLE TRAY ON RUBBER
BLOCKS ADJACENT TO
ROOF PARAPET



EQUIPMENT LAYOUT
(1:50)

COLOUR KEY	
SHARED EQUIPMENT	
VF ALLOCATED EQUIPMENT	
TEF ALLOCATED EQUIPMENT	

ALL DIMENSIONS ARE IN mm UNLESS NOTED OTHERWISE

N.G.R | E: 530581 N: 181474

DUCT KEY

- EXISTING 100Ø POWER
- EXISTING 100Ø COMMS
- EXISTING 150Ø FEEDER
- EXISTING 100Ø INCOMING*
- PROPOSED 100Ø POWER
- PROPOSED 100Ø COMMS
- PROPOSED 150Ø FEEDER
- PROPOSED 100Ø POKE-OUT*

*INCOMING AND POKE-OUT DUCTS TO BE COLOURED BY DUCT TYPE (POWER/COMMS/FEEDER)

EXISTING U/G SERVICES KEY

- HV POWER LINE HV
- LV POWER LINE LV
- E POWER LINE UNIDENTIFIED
- GLP GAS LOW PRESSURE
- GMP GAS MEDIUM PRESSURE
- GHP GAS HIGH PRESSURE
- PW POTABLE WATER
- FW FOUL SEWER
- CSEW COMBINED SEWER
- SW SURFACE WATER SEWER
- TU TELECOM
- CTV CABLE
- EA ABANDONED PIPE
- ? UNIDENTIFIED

A	Issued for Approval	NVN	YD	07.08.19
REV	MODIFICATION	BY	CH	DATE



Cell Name	Opt.
AFRICA HOUSE	-

Cell ID No		
CORNERSTONE	TEF	VF
300360	-	17049

Site Address / Contact Details	
AFRICA HOUSE 70 KINGSWAY LONDON WC2B6AH	

Drawing Title: EQUIPMENT LAYOUT			
Purpose of issue: PLANNING			Dwg Rev: A
Drawing Number: 401			Pack Issue: A
Surveyed By: SA	Original Sheet Size: A3		Pack Issue: A
Drawn: NVN	Date: 07.08.19	Checked: YD	Date: 07.08.19

EXISTING & PROPOSED ANTENNA SCHEDULE (EXISTING EQUIPMENT SHOWN GREY)

PROPOSED & EXISTING ANTENNAS	OPERATOR	FUNCTION	FEEDER/FIBRE				BIAS T's/MHA's/RRU's/JUMPERS/COMBINERS								ANTENNAS							STATUS	COMMENTS					
			LENGTH(m) & DIAMETER (SEE GUIDANCE NOTES BELOW)				FEEDERS QTY	FIBRE QTY	FIBRE LENGTH	BIAS T QTY	MHA QTY	MHA TO ANTENNA JUMPER LENGTH (m) (R'TOPS & G'FIELDS)	RRU QTY	RRU TO ANTENNA JUMPER LENGTH (m) (MAX. LENGTH AS PER TEF/VF SPEC)	LOW LEVEL COMBINER TYPE (ADJ. TO RADIO EQUIPMENT)	HIGH LEVEL COMBINER TYPE (ADJ. TO ANTENNA)	ANT. REF.	ANTENNA MANUFACTURERS PART No.	BRG°	HEIGHT TO TOP (m)	HEIGHT TO C/L (m)			HEIGHT TO U/S (m)	LOCATION (POLE MOUNTED, HEADFRAME, WITHIN SHROUD ETC)			
			MF1	MF(J1)	MF(J2)	TOTAL																				EX'TNG	PROP	
SEC 1	P	VF	1GU09	-	-	-	-	HYBRID CABLE	-	-	1	75m	-	-	-	1	5m	-	-	A1a	HUAWEI AOC4518R8V06	70°	41.6m	40.55m	39.5m	POLE MOUNTED	NEW	-
		VF	1L08	-	-	-	-	HYBRID CABLE	-	-	1	75m	-	-	-	1	5m	-	-	A1b								-
		VF	1L14	-	-	-	-	HYBRID CABLE	-	-	1	75m	-	-	-	1	5m	-	-	A1c								-
		VF	1L26	-	-	-	-	HYBRID CABLE	-	-	1	75m	-	-	-	1	5m	-	-	A1d								-
		VF	1L21	-	-	-	-	HYBRID CABLE	-	-	1	75m	-	-	-	1	5m	-	-	A1e								-
P	VF	1NR34	-	-	-	-	FIBRE CABLE	-	-	1	75m	-	-	-	1	5m	-	-	B1a	ERICSSON AIR 6488	70°	41.6m	41.2m	40.8m	POLE MOUNTED	NEW	-	
SEC 2	P	VF	2GU09	-	-	-	-	FIBRE CABLE	-	-	1	25m	-	-	-	1	5m	-	-	A2a	HUAWEI AOC4518R8V06	190°	41.6m	40.55m	39.5m	POLE MOUNTED	NEW	-
		VF	2L08	-	-	-	-	FIBRE CABLE	-	-	1	25m	-	-	-	1	5m	-	-	A2b								-
		VF	2L14	-	-	-	-	FIBRE CABLE	-	-	1	25m	-	-	-	1	5m	-	-	A2c								-
		VF	2L26	-	-	-	-	FIBRE CABLE	-	-	1	25m	-	-	-	1	5m	-	-	A2d								-
		VF	2L21	-	-	-	-	FIBRE CABLE	-	-	1	25m	-	-	-	1	5m	-	-	A2e								-
P	VF	2NR34	-	-	-	-	FIBRE CABLE	-	-	1	25m	-	-	-	1	5m	-	-	B2a	ERICSSON AIR 6488	190°	41.6m	41.2m	40.8m	POLE MOUNTED	NEW	-	
SEC 3	P	VF	3GU09	-	-	-	-	FIBRE CABLE	-	-	1	15m	-	-	-	1	5m	-	-	A3a	HUAWEI AOC4518R8V06	310°	41.6m	40.55m	39.5m	POLE MOUNTED	NEW	-
		VF	3L08	-	-	-	-	FIBRE CABLE	-	-	1	15m	-	-	-	1	5m	-	-	A3b								-
		VF	3L14	-	-	-	-	FIBRE CABLE	-	-	1	15m	-	-	-	1	5m	-	-	A3c								-
		VF	3L26	-	-	-	-	FIBRE CABLE	-	-	1	15m	-	-	-	1	5m	-	-	A3d								-
		VF	3L21	-	-	-	-	FIBRE CABLE	-	-	1	15m	-	-	-	1	5m	-	-	A3e								-
P	VF	3NR34	-	-	-	-	FIBRE CABLE	-	-	1	15m	-	-	-	1	5m	-	-	B3a	ERICSSON AIR 6488	310°	41.6m	41.2m	40.8m	POLE MOUNTED	NEW	-	

STATUS	OPERATOR	DISH REF	DISH DIA	BEARING	HEIGHT TO CENTRE (AGL)	LINK No.
PROPOSED	VF	-	300	0°	39.69	-
PROPOSED	VF	-	300	180°	39.69	-

OPERATOR & FUNCTION LEGEND		FEEDER/FIBRE LEGEND		BIAS T's/MHA's/RRU's/JUMPER/COMBINERS LEGEND		ANTENNA LEGEND	
TEF =	TELEFONICA	MF1 =	MAIN FEEDER LENGTH (INCLUDING PRE-RIGGED IN SF COLUMN)	BIAS T =	No. OF BIAS T's FOR GIVEN TECHNOLOGY	A =	DESIGNATION (A-Z)
VF =	VODAFONE	MF(J1) =	MAIN FEEDER JUMPER 1 LENGTH (LOW LEVEL COMBINERS)	MHA =	No. OF MHA's FOR GIVEN TECHNOLOGY	1 =	SECTOR (1-6)
1 =	SECTOR (2,3 etc)	MF(J2) =	MAIN FEEDER JUMPER 2 LENGTH (HIGH LEVEL COMBINERS)	MHA JUMPER =	JUMPER LENGTH BETWEEN MHA & MAIN FEEDER	b =	PORT REFERENCE (a-z)
U =	UMTS (G=GSM) (L=LTE)	TOTAL =	TOTAL FEEDER LENGTH	RRU =	No. OF RRU's FOR GIVEN TECHNOLOGY (ERS/RRH)	BRG° =	REQUIRED BEARING IN DEGREES
21 =	2100 BAND (09=0900,18=1800)	TYPE =	COAX, FIBRE OR HYBRID	RRU JUMPER =	JUMPER LENGTH BETWEEN RRU & MAIN FEEDER	STATUS =	EITHER NEW, REMAIN, OR REMOVE

No.	DESCRIPTION OF CONCESSION REQUIRED	
-	-	
CONCESSION TYPE	CONCESSION NUMBER	APPROVAL DATE
-	-	-

NOTES:

A	Issued for Approval	NVN	YD	07.08.19
REV	MODIFICATION	BY	CH	DATE



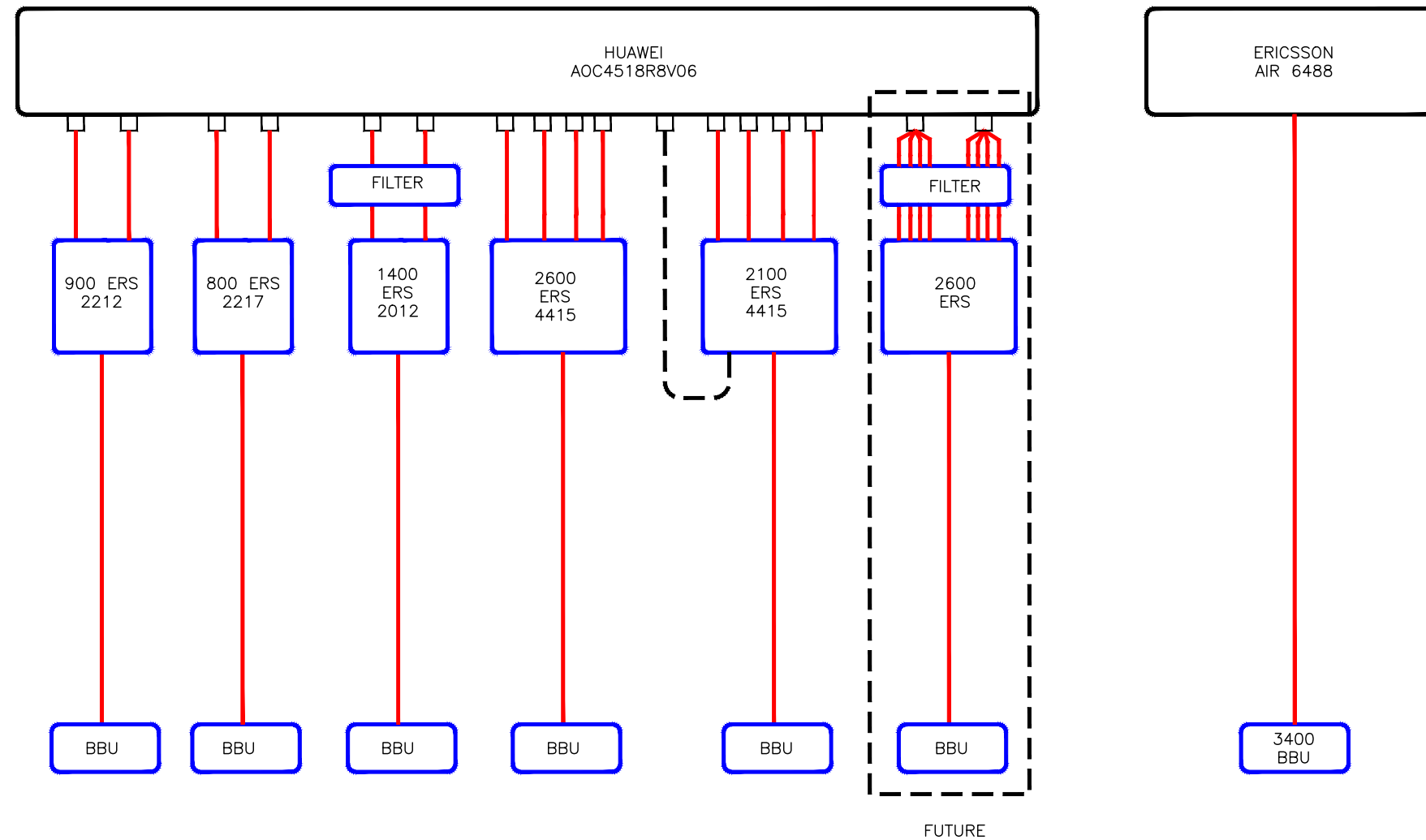
Cell Name		Opt.
AFRICA HOUSE		-
Cell ID No		
CORNERSTONE	TEF	VF
300360	-	17049

Site Address / Contact Details

AFRICA HOUSE
70 KINGSWAY
LONDON
WC2B6AH

Drawing Title: ANTENNA SCHEDULE			
Purpose of issue: PLANNING			Dwg Rev:
Drawing Number: 500			A
Surveyed By: SA	Original Sheet Size: A3		Pack Issue:
Drawn: NVN	Date: 07.08.19	Checked: YD	Date: 07.08.19

VF: M5B OPTION 6



ANTENNA AND RF SYSTEM DESIGN SCHEMATIC
(NTS)

ALL DIMENSIONS ARE IN mm UNLESS NOTED OTHERWISE

N.G.R | E: 530581 | N: 181474

NOTES:

REV	A	Issued for Approval	NVN	YD	07.08.19
		MODIFICATION	BY	CH	DATE



Cell Name	Opt.
AFRICA HOUSE	-

Cell ID No		
CORNERSTONE	TEF	VF
300360	-	17049

Site Address / Contact Details
 AFRICA HOUSE
 70 KINGSWAY
 LONDON
 WC2B6AH

Drawing Title: R.F. SYSTEM SCHEMATIC

Purpose of issue: PLANNING Dwg Rev: A

Drawing Number: 501

Surveyed By: SA Original Sheet Size: A3 Pack Issue: A

Drawn: NVN Date: 07.08.19 Checked: YD Date: 07.08.19

SUPPORT STRUCTURE SCHEDULE									
EXISTING/ PROPOSED	OPERATOR	MANUFACTURER	MODEL	STRUCTURE HEIGHT	FOUNDATION TYPE (ROOT/PAD/GRILLAGE)	FOUNDATION DIMENSIONS (WxDxH)	COLOUR/ FINISH	STATUS	COMMENTS
PROPOSED	VF	-	-	4.45m	PAD/GRILLAGE	400x400mm	GALV.	NEW	3xTRIPOD
PROPOSED	VF	FLA	4/DSB/1020	-	MAIN POLE	-	GALV.	NEW	6xFLA DOUBLE STANDOFF ASSEMBLY
PROPOSED	VF	SWANN	FREESTANDING FRAME	-	FREESTANDING	-	GALV.	NEW	3xRRU FREESTANDING FRAME

FALL ARREST SYSTEM SCHEDULE									
EXISTING/ PROPOSED	OPERATOR	MANUFACTURER	MODEL	TYPE (HORIZONTAL/VERTICAL)	LOCATION	QUANTITY	TEST DUE	STATUS	COMMENTS
PROPOSED	VF	METREEL	INVISRUNG	VERTICAL	ANTENNA SUPPORT POLE	3	-	NEW	-

ENCLOSURE SCHEDULE									
EXISTING/ PROPOSED	OPERATOR	MANUFACTURER	MODEL	DIMENSIONS (WxDxH)	LOCATION	COLOUR/ FINISH	STATUS	COMMENTS	
PROPOSED	VF	TYRONE	CSC	800x660x1770	CONCRETE BASE	GREY	NEW	GU09 & L08	
PROPOSED	VF	TYRONE	CSC	800x660x1770	CONCRETE BASE	GREY	NEW	L14, L21, L26, L26TDD & L700	

RF EQUIPMENT SCHEDULE									
EXISTING/ PROPOSED	OPERATOR	MANUFACTURER	MODEL	DIMENSIONS (WxDxH)	LOCATION	QUANTITY	COLOUR/ FINISH	STATUS	COMMENTS
PROPOSED	VF	ERICSSON	2212	342x358x128	FREE STANDING FRAME	3	GREY	NEW	GU09
PROPOSED	VF	ERICSSON	2217	351x298x127	FREE STANDING FRAME	3	GREY	NEW	L08
PROPOSED	VF	ERICSSON	2012	342x358x128	FREE STANDING FRAME	3	GREY	NEW	L14
PROPOSED	VF	ERICSSON	4415	342x358x149	FREE STANDING FRAME	3	GREY	NEW	L26
PROPOSED	VF	ERICSSON	4415	342x358x149	FREE STANDING FRAME	3	GREY	NEW	L21
PROPOSED	VF	ERICSSON	2600	-	FREE STANDING FRAME	3	GREY	NEW	L2600 TDD (FUTURE)
PROPOSED	VF	ERICSSON	700	-	FREE STANDING FRAME	3	GREY	NEW	L700 (FUTURE)
PROPOSED	VF	-	FILTER	-	SUPPORT POLE	3	GREY	NEW	L1400 FILTER
PROPOSED	VF	-	GPS ANTENNA	95mmø x 72.5	SEC 3 ANTENNA POLE	1	-	NEW	REQUIRED GPS MODULE CABLE LENGTH 100m

AC POWER SUPPLY SCHEDULE									
EXISTING/ PROPOSED	OPERATOR	MANUFACTURER	MODEL	SUPPLY TYPE (DNO/LL)	PHASE (SINGLE/THREE)	SUPPLY RATING (AMPS)	EARTHING (TN-C-S/TT)	COMMENTS	
PROPOSED	VF	COMMSCOPE	GFMC 160	DNO	THREE	100A	TN-C-S	NEW REC REQUIRED	

DC POWER SUPPLY UNIT SCHEDULE									
EXISTING/ PROPOSED	OPERATOR	MANUFACTURER	MODEL	LOCATION	AC SUPPLY TO PSU BREAKER SIZE (AMPS)	RECTIFIER SIZE (kW)	RECTIFIER QUANTITY	UPGRADE REQUIRED (Y/N)	COMMENTS
PROPOSED	VF	TYRONE	CSC	GRILLAGE	3x32A	3kW	5	N	ELTEK MK4 OUTDOOR PSU REQUIRED

TRANSMISSION SUPPLY SCHEDULE									
EXISTING/ PROPOSED (ENCLOSURE)	OPERATOR		TRANSMISSION ENCLOSURE	TRANSMISSION SOLUTION (MICROWAVE ONLY/FIBRE ONLY/ MICROWAVE+FIBRE (WITH PROVIDER NAME))	U SPACE AVAILABLE	CURRENT TRANSMISSION EQUIPMENT LOCATION	PROPOSED TRANSMISSION EQUIPMENT LOCATION	COMMENTS	
	HOST	SHARER							
PROPOSED	VF	-	CSC	MICROWAVE+FIBRE (BT)	27U	-	X	-	

ALL DIMENSIONS ARE IN mm UNLESS NOTED OTHERWISE		
N.G.R	E: 530581	N: 181474
DESIGN DEPENDENCIES	COMPLETED	
STAT SEARCH RESULTS	NO	XX.XX.XXXX
ASBESTOS REPORT	✓	-
RADAR SCAN REPORT	NO	XX.XX.XXXX
COOLING CALCS	NO	XX.XX.XXXX
LL FIRE ALARM ASSESS	✓	-
GDC LEVEL	2	NO XX.XX.XXXX
STRUCTURAL CALCS	✓	-
HD BOLT GRADE TEST	NO	XX.XX.XXXX
FOUNDATION CALCS	NO	XX.XX.XXXX
BOREHOLE REPORT	NO	XX.XX.XXXX
TRIAL HOLE REPORT	NO	XX.XX.XXXX
BOLT PULL TEST	NO	XX.XX.XXXX
BUILDING REG'S APP.	NO	XX.XX.XXXX
NET RAIL TECH PACK	NO	XX.XX.XXXX
DNO QUOTE APPROVAL	✓	-
GRP APPROVAL	NO	XX.XX.XXXX

REFER TO THE SITE SPECIFIC DRAWING SUBMISSION CHECKLIST (SDN0020) FOR A COMPREHENSIVE LIST AND INSTRUCTION ON WHERE TO FIND ALL ACCOMPANYING DESIGN DOCUMENTATION.

A	Issued for Approval	NVN	YD	07.08.19
REV	MODIFICATION	BY	CH	DATE



Cell Name		Opt.
AFRICA HOUSE		-
Cell ID No		
CORNERSTONE	TEF	VF
300360	-	17049

Site Address / Contact Details

AFRICA HOUSE
70 KINGSWAY
LONDON
WC2B6AH

Drawing Title: EQUIPMENT SCHEDULE				
Purpose of issue: PLANNING				Dwg Rev:
Drawing Number: 502				A
Surveyed By: SA		Original Sheet Size: A3		Pack Issue:
Drawn: NVN	Date: 07.08.19	Checked: YD	Date: 07.08.19	A