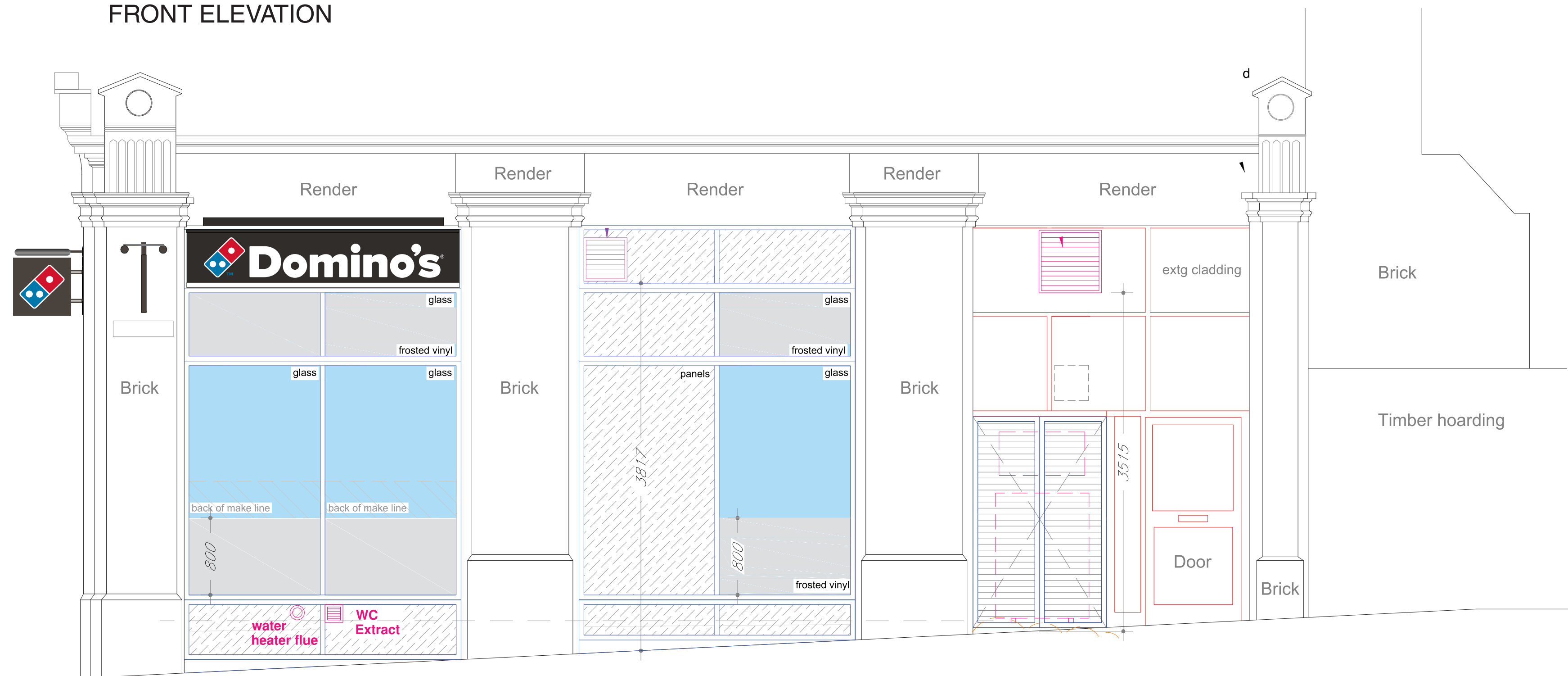
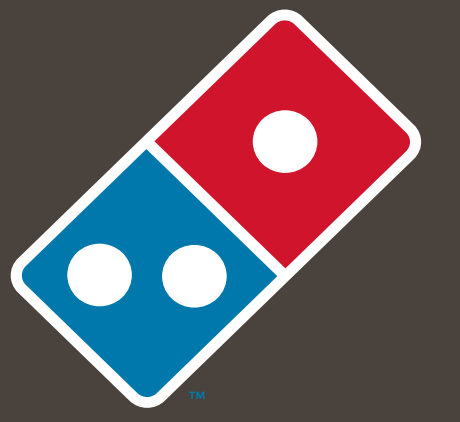
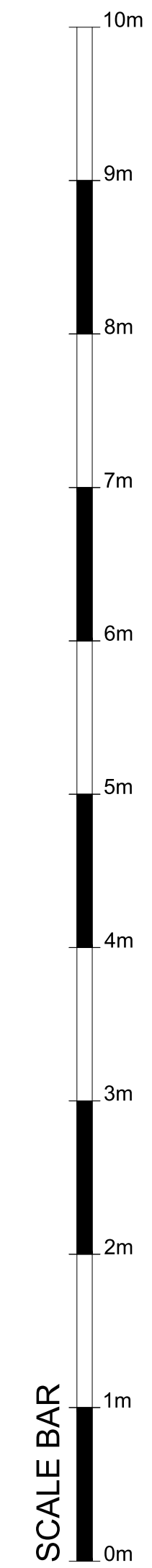


FRONT ELEVATION



SIDE ELEVATION



**Domino's**

Revision 3.0

Job:  
Domino's  
73 Farringdon Road,  
London, EC1M

Specification

see drawing

Drawn by: TS Date: 31/10/2019

Scale: 1:50@A1

Approved by:

## Proposed Signage

### Front elevation fascia:- 3170mm x 600mm

Background:- Folded Aluminium fascia powder coated RAL 7043 with 25mm return

1x Logo / text :- All built up, aluminium letters and logos with 30mm returns powder coated white. Logo has blue and red vinyl applied to face to match mactac 9839-24 blue and multifix 7911 red.

Strap line: 50mm high built up aluminium strapline with 30mm returns, powder coated white.

'R':- white vinyl applied to aluminium panel

'TM':- blue vinyl applied to aluminium panel

Illumination:- text and logo only to be illuminated externally with White LED trough light.

### Projection sign - X2

Background:- Folded Aluminium fascia powder coated RAL 7043 with 50mm return

1x Logo / text :- VINYL

Illumination:- text and logo only to be illuminated externally with White LED trough light.

### Side elevation fascia:- 2830mm x 600mm

Background:- Folded Aluminium fascia powder coated RAL 7043 with 25mm return

1x Logo / text :- All built up, aluminium letters and logos with 30mm returns powder coated white. Logo has blue and red vinyl applied to face to match mactac 9839-24 blue and multifix 7911 red.

Strap line: 50mm high built up aluminium strapline with 30mm returns, powder coated white.

'R':- white vinyl applied to aluminium panel

'TM':- blue vinyl applied to aluminium panel

Illumination:- text and logo only to be illuminated externally with White LED trough light.

### Window Vinyl

frosted vinyl applied to main glazing to side elevation only



Legend House, Bradbury Drive, Springwood Ind. Estate  
Braintree, Essex. CM7 2SD