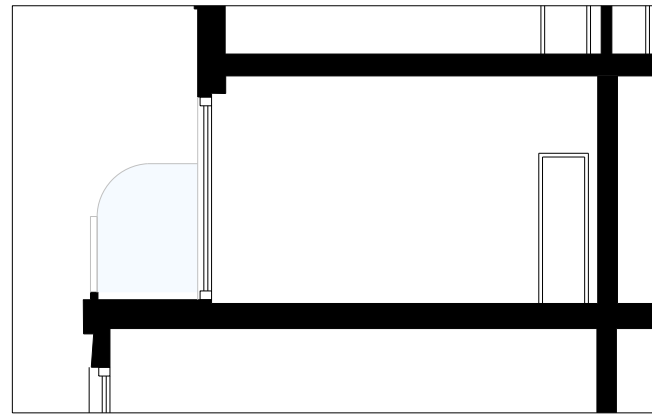
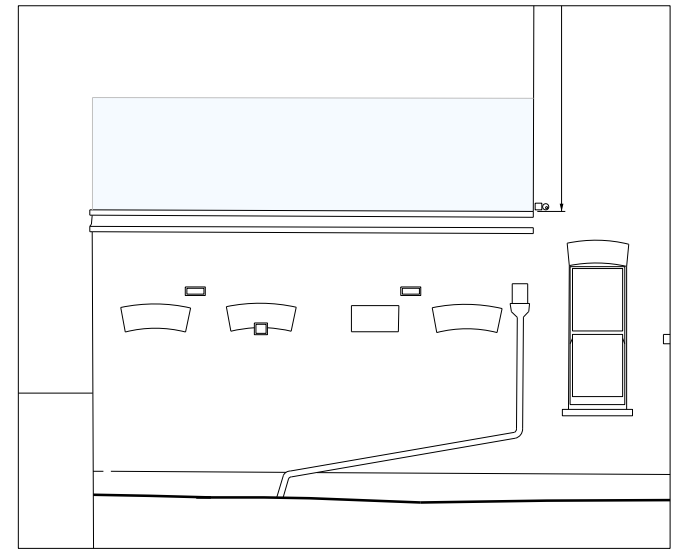


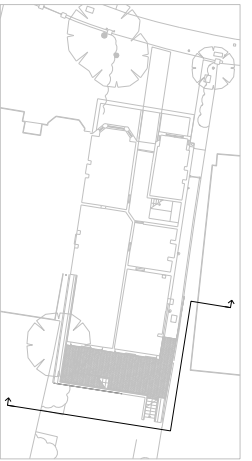
Extract of Western elevation
showing translucent glass balustrade to match
profile of neighbours balustrade at 1st floor



Extract of Eastern elevation
showing translucent glass balustrade at 1st floor



251 Goldhurst Terrace
NW6 3EP



Proposed glass balustrade to
match consented balustrading at
ground floor



253 Goldhurst Terrace

SITE

249 Goldhurst Terrace

0 1 2 3 5 10

NOTES:
Do not scale from this drawing

REVISION:
A 23/10/2019 Tile hanging hatch amended

PLANNING APPLICATION
251 GOLDHURST TERRACE
Proposed
Rear Elevation

August 2019
G M L Architects
UNIT 3,1-4 Christina Street, London EC2A 4PA
Tel: 020 7729 9595 Fax: 020 7729 1801 info@gmlarchitects.co.uk
SCALE: 1:100@A3
ISSUED FOR: PLANNING
4742/MMA/07a