

Trevor Heaps

Arboricultural Consultancy Ltd.

12 Plover Drive, Milford-on-Sea, Hampshire, SO41 0XF - Tel: 07957 763 533

Email: trevor@trevorheaps.co.uk • www.trevorheaps.co.uk



Arboricultural Impact Assessment & Method Statement (to BS:5837 2012)

For

**9 Harley Road, London
NW3 3BX**

Prepared for Mr & Mrs Polychronopoulos

Prepared by Trevor Heaps BSc, MICFor, M. Arbor.A.

Date: 16th June 2019

Ref: TH 2008

Summary

Planning Permission (2015/7015/P) has been granted to demolish the rear conservatory and make alterations to the basement level and front parking area. Tree protection details have been requested by condition (No. 5).

The proposals are within influencing distance of several trees and so some basic tree protection measures and working methodology (in accordance with BS 5837:2012) will ensure they are not detrimentally affected during construction.

The relationship between the proposal and retained / third-party trees is sustainable and will not result in any unreasonable pressure to carry out inappropriate tree works.

If the proposal is implemented in accordance with the recommendations laid out in this report, neither the trees or wider landscape will be adversely affected.

This is an arboriculturally defensible scheme and there are no (arboricultural) reasons why condition No. 5 of Planning Permission (2015/7015/P) cannot be discharged.

Contents

| | | |
|------|----------------------------------------------------------------------------|---------------|
| 1.0 | Introduction..... | 1 |
| 2.0 | Instruction..... | 1 |
| 3.0 | Drawings provided | 1 |
| 4.0 | Report context | 1 |
| 5.0 | Statutory tree protection | 2 |
| 6.0 | Ecological constraints | 2 |
| 7.0 | The site | 3 |
| 8.0 | The soil and topography | 3 |
| 9.0 | Arboricultural Impact Assessment (AIA) and Tree Protection Methods | 4 |
| 10.0 | Conclusions..... | 6 |
| 11.0 | The Arboricultural Method Statement (AMS) | 7 |
| 12.0 | Arboricultural supervision..... | 8 |
| 13.0 | Signature | 9 |
| | | |
| | Appendix 1 - Professional résumé..... | 10 |
| | Appendix 2 - Tree data schedule | 11 |
| | Appendix 3 - Tree data schedule explanatory notes..... | 12 |
| | Appendix 4 – Specifications for tree protective measures | 14 |
| | Appendix 5 – General precautions and further information | 23 |
| | Appendix 6 - Procedure to follow in case of damage to retained trees | 24 |
| | Appendix 7 - Induction form for all site personnel | 26 |
| | Appendix 8 - Site inspection record..... | 27 |
| | Appendix 9 - Tree Protection Plan..... | End of Report |

1.0 Introduction

1.1 I am Trevor Heaps, Director of Trevor Heaps Arboricultural Consultancy Ltd. I have experience and qualifications in the field of Arboriculture. Further information is provided in Appendix 1.

1.2 Contact details:

| Who | Name | Organisation | Details |
|---------------------------|-------------------------------|--------------------------------------------------------------------------------------------|-----------------------------------------------------------------------------------------------------------------------------------------------------------|
| Arboricultural consultant | Trevor Heaps | THAC Ltd. 6 Molefields, Milford-on-Sea, Hampshire, SO41 0UB | Tel: 07957 763 533 E-mail: trevor@trevorheaps.co.uk |
| Client | Mr & Mrs Polychronopoulos | | |
| Camden - LPA | Tree and Landscape Officer | London Borough of Camden 5 Pancras Square c/o Town Hall, Judd Street London WC1H 9JE | E-mail: Send an enquiry Website: www.camden.gov.uk/planning Phone: 020 7974 4444 |

2.0 Instruction

2.1 We are to survey all significant trees that could be affected by the planned construction works.

2.2 We are then to prepare a report to appraise the effect these works will have on any nearby trees and the surrounding landscape.

2.3 We are then to set out recommendations for the protection of the trees during development - in accordance with British Standard 5837:2012 'Trees in relation to design, demolition and construction – Recommendations' (BS5837).

3.0 Drawings provided

3.1 Site Plan / Drainage Services – Ref. 607/D/4/P2 – Dated June 2015 – Drawn by ME7 Ltd.

4.0 Report context

4.1 The site was surveyed by Trevor Heaps on the 14th June 2019. The applicant was in attendance.

4.2 The trees were surveyed from within the site at ground level. No climbed inspections were carried out and no root/soil samples were taken for analysis.

4.3 The trees were inspected based on the Visual Tree Assessment (VTA) developed by Mattheck & Breloer (The Body Language of Trees, 1994).

4.4 Tree heights, crown spreads and stem diameters were measured with a clinometer, a Disto laser measure and a diameter measuring tape respectively.

4.5 Small trees and shrubs (with stem diameters less than 75mm) were not surveyed.

4.6 This report is based on the information provided (i.e. site plans, proposed drawings, scales, measurements etc.) and observations during the site visit.

4.7 This report will support a planning application or an application to discharge a tree-related condition and its purpose is to assist and inform the planning process.

4.8 This report does not set out the detailed, working specifications of tree protection measures and engineering / design features, but provides enough detail to demonstrate the feasibility of the scheme in principle.

4.9 We were not instructed to investigate the statutory protection status of trees on or adjacent to the site (but have checked the LPAs website for any relevant information).

4.10 The report does not assess the potential influence of trees upon load-bearing soils beneath existing and proposed structures (resulting from water abstraction by trees on shrinkable soils).

5.0 Statutory tree protection

5.1 According to the Council's website, this property is within the Elsworthy Conservation Area. This means that if any works are required to trees with a stem diameter of 75mm or above, that are not approved by way of this report, then a Section 211 Notice must be served on the LPA (to give them six weeks' prior notice).

5.2 It is not clear from the Council's website whether the trees on and adjacent to this site are protected by a Tree Preservation Order, and so it is advisable to make further inquiries before carrying out any tree works (not approved by way of this report).

6.0 Ecological constraints

6.1 The Wildlife and Countryside Act 1981 (as amended by the Countryside and Rights of Way Act 2000) provides statutory protection to birds, bats and other species that inhabit trees.

6.2 In addition to any tree matters considered in this report, these protected animals could impose significant constraints on the use and timing of access to the site.

6.3 You are therefore advised to seek advice from a suitably-qualified ecologist prior to any works being started.

7.0 The site

7.1 This property is situated within a leafy, residential part of Camden.

8.0 The soil and topography

8.1 The soils at this site were determined using information provided by the British Geological Survey and observations during the site visit.

8.2 The site is level with no adverse features, and the soil texture is clayey loam to silty loam. The soil parent material is Prequaternary Marine / Estuarine sand and Silt.

8.3 The soil is deep, and so a thick soil profile is likely. Soil (and any underlying parent Material) should be easily dug to a depth of more than one metre.

8.4 Given the information above, the soil has the potential of becoming compacted (which is harmful to tree roots).

9.0 Arboricultural Impact Assessment (AIA) and Tree Protection Methods

9.1 Table 1 lists the potential effects the construction works will have on the subject trees. Mitigation measures are discussed in more detail below, and this information should be read in conjunction with the supporting Tree Protection Plan (TPP).

9.2 Further information on the subject trees is provided in Appendices 2 & 3.

Table 1: Potential effects on trees due to development

| The impacts on trees due to this development | Category A trees affected | Category B trees affected | Category C trees affected |
|------------------------------------------------------|---------------------------|---------------------------|---------------------------|
| Physical damage to stems of retained trees | | T12, 13 | |
| Foundations within RPA of retained trees | | T12, 13 | |
| Soil compaction around retained trees | T7 | T2, 8 11, 12, 13 | T9 |
| Demolition of existing structures | | T8 | T9 |
| New surfaces to be laid within RPA of retained trees | | T12, 13 | |
| Underground services | T7 | T3, 11, 12 | |

9.3 Physical damage to stems of retained trees

9.3.1 There is risk that construction-related activities could accidentally damage the stems of the London Planes T12 & T13.

9.3.2 To minimise this risk, each stem will be boxed in with wooden plyboards.

9.4 Foundations within RPA of retained trees

9.4.1 Partly due the direct damage being caused by the roots of the London Planes T12 & T13, the front boundary wall is to be replaced.

9.4.2 The new wall will consist of five new brick piers, that will support a low brick wall topped with railings.

9.4.3 To minimise root disruption, the brick piers (shown orange on the TPP) will sit on 1m³ concrete pads. The holes for the pads will be hand-dug and lined with plastic before filling with concrete. The RPA incursions are less than .5% for both trees.

9.4.4 The brick walls between the piers will sit on a floating steel lintel that will sit at (or just below) ground level.

9.4.5 The above works will take place from on top of the existing hard surface of the block-paved driveway.

9.4.6 The trees are healthy and will tolerate the works. Subsequently, there will be no detrimental effect on the health or appearance of the trees, nor the visual amenity or arboreal character of the area.

9.5 Soil compaction around retained trees

9.5.1 Soil compaction can be caused by various construction-related activities such as storage or materials and the use of heavy machinery (or even heavier than normal foot-fall during works). It is harmful to tree roots because it reduces gaseous exchange and the availability of water and nutrients.

9.5.2 To avoid soil compaction affecting the retained trees at this site, all vulnerable areas will be separated from the working area by protective fencing and ground protection.

9.5.3 Where possible, all existing hard surfaces (within the RPAs of retained trees) will also be left in situ during construction and only be removed (by hand / small machinery) at the landscaping stage.

9.5.4 The existing hard surface of the block-paved front garden will provide ample protection for any roots growing beneath and will be left in situ during construction.

9.6 Demolition of existing structures

9.6.1 To ensure that disruption is minimised to the roots and crowns of the nearby trees, the existing rear conservatory will be demolished by hand / small machinery using the 'top down, pull back' method.

9.6.2 The parts of the base / foundations nearest to the boundary (nearest to T8 & T9) will be left in situ.

9.7 New surfaces to be laid within RPA of retained trees

9.7.1 The block paving in the front garden is to be re-laid.

9.7.2 To minimise root disruption, this will only be carried out during the landscaping stage of development (i.e. the existing block paved surface will be left in situ during construction to act as ground protection).

9.8 Underground services

9.8.1 The scheme has been designed in such a way as to allow any new services to either connect directly to existing underground services (with no further excavations) or be connected to existing services using a route outside the RPAs of trees shown retained.

9.8.2 If existing services within RPAs require upgrading, care shall be taken to minimise disturbance and where practicable, trenchless techniques employed; only as a last resort should open excavations be considered. Where existing services within RPAs are deemed not satisfactory for any further use, they should be left in situ rather than being excavated or removed.

9.8.3 If, for whatever reason, the proposed services need to be moved (and incursions into RPAs are unavoidable), then the installation works will be carried out under full arboricultural supervision and will, at the very least, comply with the methods and guidelines detailed in the National Joint Utilities Group publication NJUG 4, Guidelines for the Planning, Installation, and Maintenance of Utility Services in Proximity to Trees (November 2007).

10.0 Conclusions

10.1 The retained / third-party trees will be protected using up-to-date methodology and guidance provided by the current British Standards (BS 58378:2012). To this end, a site-specific AMS and TPP have been provided. These are found in Section 11 and Appendix 9 respectively.

10.2 Provided the recommendations laid out in this report are followed, the proposals will not detrimentally affect the trees or the character / appearance of the local area.

10.3 The trees do not cause any significant conflicts in terms of construction activities, nor will any significant issues of post-development pressure be likely to emerge that could not be managed with routine, minor tree maintenance.

11.0 The Arboricultural Method Statement (AMS)

11.1 Effective tree protection relies on following a logical sequence of events and arboricultural supervision. This AMS lays down the methodology for all construction works that may influence significant trees and recommendations for arboricultural supervision are provided in Section 12.

11.2 It is essential that this AMS is observed and adhered to. Therefore, a copy of this AMS must be issued to the building contractor to be integrated into their work schedule and must also be permanently made available on-site for the duration of development.

11.3 This AMS should be read in conjunction with the supporting Tree Protection Plan (TPP), which is found in Appendix 9.

11.4 At this site, operations are to occur in the following sequence (refer to Appendix 4 for further details on underlined methodology; which are listed in alphabetical order):

1. Hold pre-commencement site meeting with project arboriculturist, building contractor and arboricultural officer (prior to the commencement of any development work commencing on site). The contractor will be required to read and sign the induction form (see Appendix 7).
2. Demolish existing rear conservatory, leaving the foundations on the south-eastern side in situ (to avoid disturbing the roots of the third-party trees).
3. Erect protective fencing along the position(s) shown by the dashed red line/s on the TPP.
4. Arboricultural Consultant to check Tree Protection at this stage.
5. Commence construction works (relaying of block paving to be done last).
6. Working from on top of existing hard surfaces and/or suitable ground protection, excavate (by hand) the holes for the new concrete brick pier foundation pads.
7. Remove existing hard surface (existing block-paved driveway) and re-lay with permeable block paving ('no dig' not required)
8. Remove tree protection when all construction activity has ended.
9. Carry out soft landscaping works.

12.0 Arboricultural supervision

12.1 A suitably-qualified arboriculturalist will provide on-going supervision during construction. The occasions when supervision is required are outlined in Table 2. If the LPA wish to see further supervision, this matter can be dealt with by amending the report and/or by condition.

Table 2: Indicative arboricultural supervision requirements

| Supervision details | Required (Y / N) | When | Details | Nature | Sign off |
|--------------------------------------------|------------------|----------------------------------------------|--------------------------------------------------------------------------------------------------------------------------------------------------------------------------------------------------------------------------------------|-------------------------------------------------------------------|----------------------------------------------------|
| Pre-commencement site meeting | Y | Prior to any site activity | To ensure contractors are briefed & understand the AMS & TPP. A site supervisor will be appointed to oversee tree protection & the reporting of any damage to trees or deviation from the AMS - to the project arboriculturist / LPA | Informal and open discussions. Induction form signed by attendees | Details of meeting to be sent to LPA within 5 days |
| Meeting with tree contractors | | Prior to protective measures being installed | To ensure tree work instructions are clear and understood. | Informal meeting | No follow up required |
| Protective measure(s) check | Y | Prior to any site activity | To ensure that protective measures are fit-for-purposed and correctly positioned. | Site meeting with a site monitoring report to be prepared | Details of to be sent to LPA within 5 days |
| On-going supervision | | Every 2 weeks during construction | To ensure that the protective measures have not been moved and continue to be fit-for-purpose. | Site meeting with a site monitoring report to be prepared | Details of to be sent to LPA within 5 days |
| Supervision of excavation works near trees | | During construction | To supervise key stages of works near trees (insert which / when) | Site meeting with a site monitoring report to be prepared | Details of to be sent to LPA within 5 days |
| Meeting with landscape contractors | | After construction | To provide advice on tree / shrub selection (if not conditioned) | Informal meeting | No follow up required |

12.2 A site inspection record (see Appendix 8) will be prepared after each visit and will state the condition of tree protection measures and outline any required remedial action (and timescales).

12.3 To demonstrate compliance, and to help the LPA discharge relevant planning conditions, all site monitoring reports will be forwarded to the LPAs arboricultural officer within 5 working days of the visit.

12.3 NOTE: It is the applicant's responsibility to arrange meeting dates with the arboriculturist.

13.0 Signature

This report represents a true and factual account of the potential arboricultural impacts, and makes recommendations for appropriate protective measures, at the subject property.

Signed



.....

Trevor Heaps

Chartered Arboriculturist

BSc (Hons), MArborA, MICFor.

Dated

16th June 2019

Appendix 1 - Professional résumé

I am Trevor Heaps, director of Trevor Heaps Arboricultural Consultancy Ltd. I am a Chartered Arboriculturist, a Professional Member of the Arboricultural Association (AA) and hold a First-Class Honours Degree in Arboriculture.

Professional training

- Arboriculture and Bats: Scoping Surveys for Arborists (BCT & AA) – October 2017
- Tree Science (AA) – June 2016
- OPM (Oak Processionary Moth) Training (FC) – May 2016
- Visual Tree Assessment (Arboricultural Association) - October 2015
- Trees and the Law (Dr Charles Mynors) - June 2015
- Mortgage (Home Buyers) Report Writing (LANTRA / CAS) - February 2015
- Tree Preservation Orders - effective application (LANTRA / CAS) - November 2014
- Professional Tree Inspection 3-day course (LANTRA / AA) - July 2014
- Arboricultural Consultancy Course (AA) - May 2014
- Further down the subsidence trail 1-day course (AA) - April 2013
- Getting to grips with subsidence 1-day course (AA) - November 2012

AA – Arboricultural Association

BCT – Bat Conservation Trust

CAS – Consulting Arborist Society

FC – Forestry Commission

Appendix 2 - Tree data schedule

| Ref | Name | Age | DBH (mm) | Hgt. (m) | Can. hgt. (m) | Can N (m) | Can E (m) | Can S (m) | Can W (m) | Physio cond. | Struct cond. | Life Exp. | Ret. Cat. | Comments | Rec's (proposed works are highlighted) |
|-----|----------------------------------------------------|-----|----------|----------|---------------|-----------|-----------|-----------|-----------|--------------|--------------|-----------|-----------|---------------------------------------------------------------------------------------------------------------|----------------------------------------|
| T1 | Prunus nobilis (Bay) | SM | 100 | 4 | 1 | 1.5 | 1.5 | 1.5 | 1.5 | Normal | Normal | 40+ | B2 | No comments. | No works required at present. |
| T2 | Aesculus hippocastanum (Horse Chestnut) | M | 750 | 25 | 8 | 8 | 8 | 8 | 8 | Normal | Normal | 40+ | B2 | Growing on third-party land (dbh estimated). Crown reduced in past. Crown lifted in past. | N/A - Third party tree. |
| T3 | Tilia X europaea (Common Lime) | SM | 125 | 9 | 6 | 3 | 3 | 3 | 3 | Normal | Normal | 40+ | B2 | Growing on third-party land (dbh estimated). | N/A - Third party tree. |
| T4 | Malus (Apple) | SM | 125 | 4 | 1.5 | 2.5 | 2.5 | 2.5 | 2.5 | Normal | Normal | 40+ | B2 | | No works required at present. |
| T5 | Tilia X europaea (Common Lime) | EM | 250 | 10 | 6 | 4 | 4 | 4 | 4 | Normal | Normal | 40+ | B2 | Growing on third-party land (dbh estimated). | N/A - Third party tree. |
| S6 | Pittosporum (Pittosporum) | M | 300 | 6 | 2 | 2.5 | 2.5 | 2.5 | 2.5 | Normal | Normal | 40+ | C2 | Multi-stemmed at base. | No works required at present. |
| T7 | Betula utilis 'Jacquemontii' (Himalayan Birch) | EM | 210 | 10 | 3 | 3 | 3 | 3 | 3 | Normal | Normal | 40+ | A2 | | No works required at present. |
| T8 | Prunus cerasifera 'Pissardii' (Purple-leafed Plum) | M | 350 | 8 | 3 | 3 | 3 | 3 | 3 | Fair | Normal | 40+ | B2 | Growing on third-party land (dbh estimated). Ivy (heavy covering). | N/A - Third party tree. |
| T9 | Prunus cerasifera 'Pissardii' (Purple-leafed Plum) | M | 350 | 8 | 3 | 3 | 3 | 3 | 3 | Fair | Normal | 40+ | C2 | Growing on third-party land (dbh estimated). Leaning heavily. Sparse. | N/A - Third party tree. |
| T10 | Betula utilis 'Jacquemontii' (Himalayan Birch) | EM | 100 | 10 | 4 | 2 | 2 | 2 | 2 | Normal | Normal | 40+ | B2 | Growing on third-party land (dbh estimated). Multi-stemmed at base. | N/A - Third party tree. |
| T11 | Fagus sylvatica 'Purpurea' (Copper Beech) | M | 500 | 18 | 5 | 5 | 5 | 5 | 5 | Normal | Normal | 40+ | B2 | cracking boundary wall, 2.8 from wall | N/A - Third party tree. |
| T12 | Platanus X hispanica (London Plane) | M | 765 | 18 | 6 | 4 | 4 | 4 | 4 | Normal | Normal | 40+ | B2 | Street tree growing in tarmac. Lapsed pollard managed by crown reductions. Lifting gate rail and block paving | N/A - Third party tree. |
| T13 | Platanus X hispanica (London Plane) | M | 670 | 18 | 6 | 4 | 4 | 4 | 4 | Normal | Normal | 40+ | B2 | Street tree growing in tarmac. Lapsed pollard managed by crown reductions. | N/A - Third party tree. |

Appendix 3 - Tree data schedule explanatory notes

This section explains the terms used in the **Tree data schedule** (Appendix 2).

Ref: Each item of vegetation has its own unique number, prefixed by a letter such that:

T1=Tree **S2**=Shrub or stump **G3**=Group **H4**=Hedge **W5**=Woodland

Species: Latin (and common names in brackets) are given.

Age:

- **Y - Young** - Usually less than 10 years' old
- **SM - Semi-mature** - Significant future growth to be expected, both in height and crown spread (typically below 30% of life expectancy)
- **EM - Early-mature** - Full height almost attained. Significant growth may be expected in terms of crown spread (typically 30-60% of life expectancy)
- **M - Mature** - Full height attained. Crown spread will increase but growth increments will be slight (typically 60% or more of life expectancy)
- **V - Veteran** - A level of maturity whereby significant management may be required to keep the tree in a safe condition
- **OM - Over-mature** - As for veteran except management is not considered worthwhile

DBH (mm): Stem diameter, measured in mm, taken at 1.5m above ground level where possible.

Hgt. (m): Height: Measured from ground level to the top of the crown in metres.

Can Hgt. (m): Crown height: Measured from ground level to the lowest tips of the main crown begins in metres. Where the crown is unbalanced it is measured on the side deemed to be most relevant. This is usually the side facing the area of anticipated development.

Can N, S, E, W: - Canopy extents

Approximate radial crown spread measured to the four cardinal points (for individual trees only)

Physio cond.: Indicates the physiological condition of the tree as one of the following categories:

- **Normal** - Healthy tree with no symptoms of significant disease
- **Fair** - Tree with early signs of disease, small defects, decreased life expectancy, or evidence of less-than-average vigour for the species
- **Poor** - Significant disease present, limited life expectancy, or with very low vigour for the species and evidence of physiological stress
- **Very poor** - Tree is in advanced stages of physiological failure and is dying
- **Dead** - No leaves or signs of life

Struct cond.: Indicates the structural condition of the tree as one of the following categories:

- **Normal** - No significant structural defects noted
- **Fair** - Some structural defects noted but remedial action not required at present
- **Poor** - Significant defects noted resulting in a tree that requires regular monitoring or remedial action
- **Very poor** - Major defects noted that compromise the safety of the tree. Remedial works or tree removal is likely to be required.
- **Dead** - No leaves or signs of life

Life Exp.: The estimated number of years before the tree may require removal (<10), (10 – 20), (20 – 40), or (40+).

Ret. Cat.: - **Retention category:** BS5837:2012 Category where:

- **U = Trees unsuitable for retention.** Trees in such a condition that cannot realistically be retained as living trees in the context of the current land use for longer than 10 years. These trees are shown on the tree plans with red centres.
- **A = Trees of high quality.** Trees of high quality with an estimated remaining life expectancy of at least 40 years. These trees are shown on the tree plans with green centres.
- **B = Trees of moderate quality.** Trees of moderate quality with an estimated remaining life expectancy of at least 20 years. These trees are shown on the tree plans with blue centres.
- **C = Trees of low quality.** Trees of low quality with an estimated remaining life expectancy of at least 10 years, or young trees with a stem diameter below 150mm. These trees are shown on the tree plans with grey centres.

Trees of notable quality are graded as Category A or Category B. These trees are sometimes divided further into sub-categories:

- Sub-category 1 is allocated where it has been assessed that the tree has mainly arboricultural qualities.
- Sub-category 2 is allocated where it is assessed that the tree has mainly landscape qualities.
- Subcategory 3 is allocated where it is assessed that the tree has mainly cultural qualities, including conservation.

Trees may be allocated more than one sub-category. All sub-categories carry equal weight, with for example an A₃ tree being of the same importance and priority as an A₁ tree.

Comments: Tree form and pruning history are also recorded along with an account of any significant defects.

Rec's - Recommendations: Usually based on any defects observed and intended to ensure that the tree is in an acceptable condition.

Appendix 4 – Specifications for tree protective measures

Creation of brick pier footings within Root Protection Areas (RPAs) of retained trees

To minimise root disruption during excavation works, the following guidance shall be followed:

The RPA of the subject tree shall be clearly marked on the ground with fluorescent marker paint - by tying the spray can to its stem using a pre-determined length of string to represent the tree's root protection radius (RPR) and keeping the string taught when spraying the ground. Cross reference the fourth column of the table in Appendix 2 (DBH mm) with the 2nd column in table 1 below to determine the length of string required.

Table 1. The RPRs given below are for single-stemmed trees.
Please contact the project arboriculturist if the subject tree is multi-stemmed.

| Single stem diameter (mm) | Radius of nominal circle (m) / RPR | RPA (m ²) | Single stem diameter (mm) | Radius of nominal circle (m) / RPR | RPA (m ²) | Single stem diameter (mm) | Radius of nominal circle (m) / RPR | RPA (m ²) |
|---------------------------|------------------------------------|-----------------------|---------------------------|------------------------------------|-----------------------|---------------------------|------------------------------------|-----------------------|
| 75 | 0.9 | 3 | 475 | 5.7 | 102 | 875 | 10.5 | 346 |
| 100 | 1.2 | 5 | 500 | 6 | 113 | 900 | 10.8 | 366 |
| 125 | 1.5 | 7 | 525 | 6.3 | 125 | 925 | 11.1 | 387 |
| 150 | 1.8 | 10 | 550 | 6.6 | 137 | 950 | 11.4 | 408 |
| 175 | 2.1 | 14 | 575 | 6.9 | 149 | 975 | 11.7 | 430 |
| 200 | 2.4 | 18 | 600 | 7.2 | 163 | 1000 | 12 | 452 |
| 225 | 2.7 | 23 | 625 | 7.5 | 177 | 1025 | 12.3 | 475 |
| 250 | 3 | 28 | 650 | 7.8 | 191 | 1050 | 12.6 | 499 |
| 275 | 3.3 | 34 | 675 | 8.1 | 206 | 1075 | 12.9 | 523 |
| 300 | 3.6 | 41 | 700 | 8.4 | 222 | 1100 | 13.2 | 547 |
| 325 | 3.9 | 48 | 725 | 8.7 | 238 | 1125 | 13.5 | 572 |
| 350 | 4.2 | 55 | 750 | 9 | 254 | 1150 | 13.8 | 598 |
| 375 | 4.5 | 64 | 775 | 9.3 | 272 | 1175 | 14.1 | 624 |
| 400 | 4.8 | 72 | 800 | 9.6 | 289 | 1200 | 14.4 | 651 |
| 425 | 5.1 | 82 | 825 | 9.9 | 308 | 1225 | 14.7 | 679 |
| 450 | 5.4 | 92 | 850 | 10.2 | 327 | 1250 | 15 | 707 |

A cable avoidance tool (C.A.T.) will then be used to check for underground cables. If found, their locations will be marked with a biodegradable marker paint (using a different colour to the one used to mark the RPAs).

Working off either ground protection or an existing hard surface, the optimal locations for the brick pier footings (i.e. between roots) will be determined by hand, using tools such as a fork, spade, trowel, stiff brush or an air spade.

If roots below 25mm in diameter are discovered, they can be severed cleanly back to a suitable growth point with sharp secateurs or a sharp pull saw. If roots over 25mm in diameter are discovered, they will be bent / relocated as best as possible. If impractical, then the above process will be repeated.

When the location(s) for the brick pier footings have been determined, the remainder of the hole(s) will be hand-dug and lined with plastic sheeting (to avoid concrete residues leaching into rooting area/s of the retained trees) and back-filled.

The structure-supporting beam(s) can now be fixed to the top of the brick piers and construction can commence. Note: The underside of the supporting beam(s) will sit on top of the highest level of the trees' RPAs (i.e. there will no alteration of ground levels).

Demolition of existing buildings

Any existing structures to be removed, that are within or close to the RPAs of retained trees, shall be demolished using the 'top down, pull back' method. This shall proceed in a manner pulling the structure back into itself, working away from the trees.

Any machinery used during the demolition and clearance of existing buildings must work from a position outside of the RPAs of retained trees and/or be positioned on suitable ground protection.

To avoid unnecessary root disruption, the foundations of demolished buildings within in the RPAs of retained trees shall either be left in situ or broken up by hand (using a pneumatic drill) under arboricultural supervision (if specified).

Ground Protection

The following is based on an extract from British Standard 5837:2012 - Trees in relation to design, demolition and construction– Recommendations.

Temporary ground protection should be able to support any traffic entering or using the site without being distorted or causing compaction of underlying soil and might comprise one of the following:

a) for pedestrian-movements only, a single thickness of scaffold boards placed either on top of a driven scaffold frame, to form a suspended walkway, or on top of a compression-resistant layer (e.g. 100 mm depth of woodchip), laid onto a geotextile membrane;

b) for pedestrian-operated plant up to a gross weight of 2 t, proprietary, inter-linked ground protection boards placed on top of a compression-resistant layer (e.g. 150 mm depth of woodchip), laid onto a geotextile membrane;

c) for wheeled or tracked construction traffic exceeding 2 t gross weight, an alternative system (e.g. proprietary systems or pre-cast reinforced concrete slabs) to an engineering specification designed in conjunction with arboricultural advice, to accommodate the likely loading to which it will be subjected.

The location of the temporary ground protection is shown on the tree protection plan and detailed within the arboricultural method statement.

In all cases, the objective should be to avoid compaction of the soil, which can arise from the single passage of a heavy vehicle, especially in wet conditions, so that tree root functions remain unimpaired.

All ground protection is to be maintained in good order, so it is fit for purpose throughout development. The ground protection will not be altered in any way, or prematurely removed without prior consent of the project arboriculturist or the LPA arboricultural officer.

Figure 1: An example of ground protection on work areas within a RPA (BS 5837:2005).

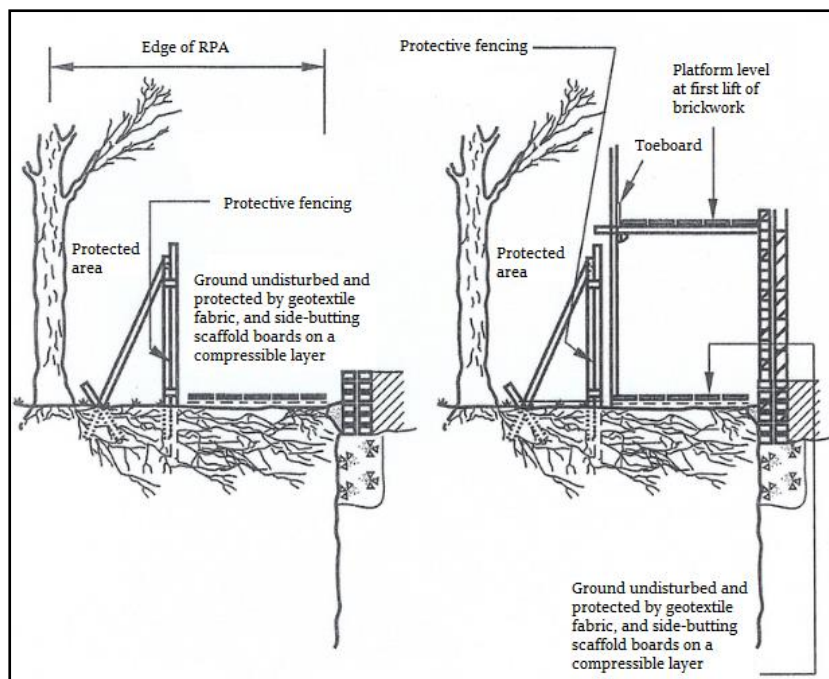
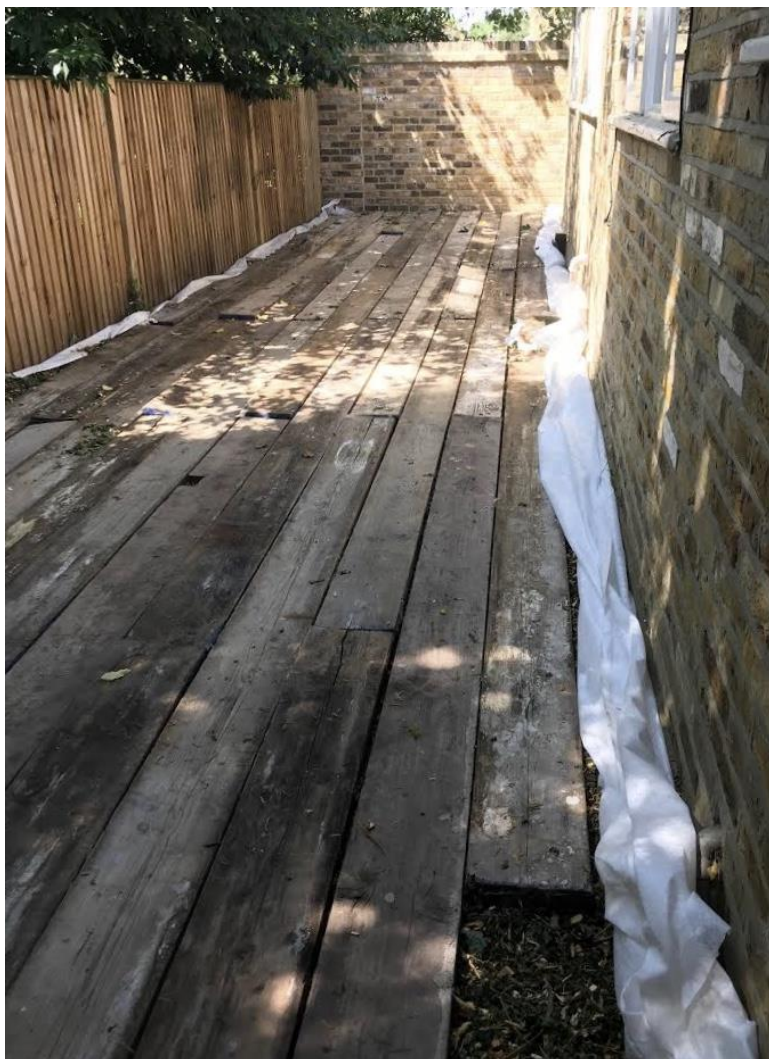


Figure 2: A worked example of the ground protection described at (a) on the previous page



Protective fencing

The following is based on an extract from British Standard 5837:2012 - Trees in relation to design, demolition and construction- Recommendations.

The framework support (shown in Figure 2 and photo 1) is the usual method of support for 'Heras' fencing. Some variations are possible if site conditions are appropriate; i.e. support by wooden posts (75mm x 75mm x 2.75m) dug or concreted into the ground (dry mix concrete contained within a plastic bag), or if there is no pressure for access, a lighter form of netting on stakes.

Figure 2: Default specification for protective barrier (BS 5837:2012)

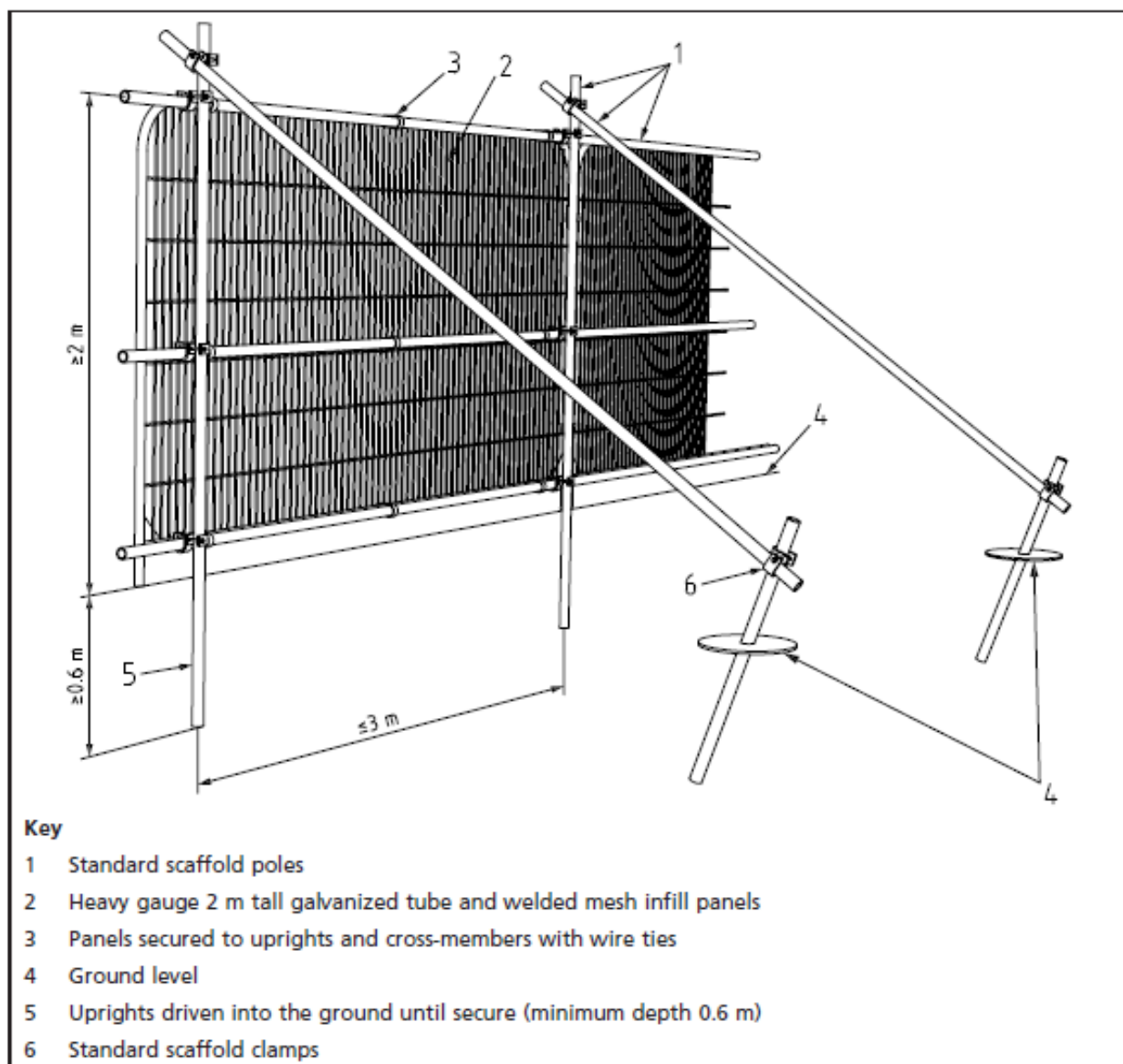


Photo 1: A worked example of the default specification for protective barrier (BS 837:2012)



Durable, all-weather signs are to be attached to the fencing (an example sign is provided below). These shall be printed, laminated and attached at regular intervals along the fencing.

Once erected, the protective fencing is to be regarded as sacrosanct and there is to be no access into the area protected by it - the construction exclusion zone (CEZ).

The protective fencing is to be maintained in good order, so it is fit for purpose throughout the construction process. The fencing will not be altered in any way, or prematurely removed without prior consent of the project arboriculturist and/or (if necessary) the LPA arboricultural officer.

Where specified in the AMS, the tree(s) stem/s shall be boxed off with wooden ply boards or wrapped in hessian and chestnut pale fencing. This will help avoid any direct damage to tree stems from passing machinery (see photo 2).

Photo 2: Trees protected by hessian & chestnut pale fencing / limbs protected by wooden boxing



TREE PROTECTION FENCING

KEEP OUT

This fencing must not be removed
or altered in any way without prior
consultation with the project
arboriculturist!

Please report any damage to trees
and/or fencing to the site manager
or the project arboriculturist

Trevor Heaps

07957 763 53

Removal of existing hard surfaces / rubble

Working off either an existing hard surface or suitable ground protection, machinery can be used to carefully peel back and remove existing tarmac or concrete. Other surfaces, such as rubble or block paving, must be removed by hand.

Sub-bases can be removed mechanically if it is unlikely that roots will be found beneath it (this must be approved by the arboricultural consultant). Underlying (soft) ground levels must be retained and will not be excavated.

All newly exposed soil and exposed roots will be covered with damp hessian or 100 mm of topsoil.

Machinery can be used to move the topsoil close to the exposed area, but the topsoil itself will be spread by hand.

Machinery will not be sited on any exposed rooting area / RPA.

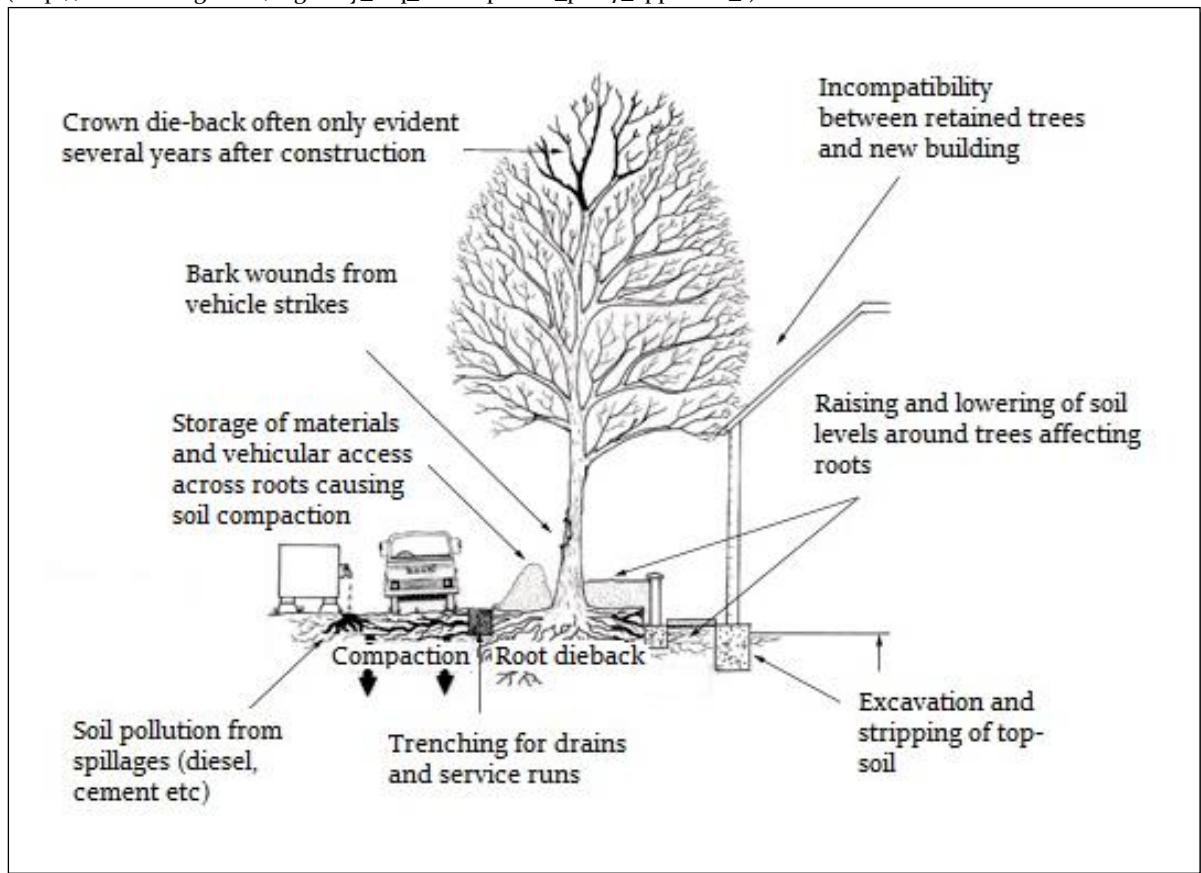
Soft landscaping within or close to the Root Protection Areas (RPAs) of retained trees

The following precautions are necessary to avoid damage to trees (where activities are to take place within their RPAs):

- Ground levels will not be changed;
- Soil must be of good quality and free of contaminants and other foreign objects potentially injurious to tree roots. The topsoil must satisfy the requirements of BS3882:200;
- No heavy machinery will be operated within the RPAs of retained trees during the installation of soft landscaping;
- Unwanted vegetation shall be removed manually or by using systemic herbicide that will not damage tree roots;
- No fuels or chemicals shall be used or stored within these areas; and
- No irrigation or drainage pipes shall be installed within the RPAs

Appendix 5 – General precautions and further information

Figure 4: Common problems for trees on development sites
(http://www.leics.gov.uk/highway_req_development_part7_appendix_f)



5.1 Services and drainage: Surface run-off water shall be sent to soakaways located outside the RPAs of retained tree(s). If trenching is required within the RPA of retained trees to provide routes for services, this work shall be undertaken using mole boring and / or hand digging (under arboricultural supervision).

5.2 Storage of materials: No materials or spoil are to be stored within areas protected by protective fencing and/or ground protection. The same applies for existing hard surfaces that are being used as ground protection.

5.3 Spillages: If any cement residues fall within root protection areas, it shall be swept up, bagged and removed from site – it shall not be washed away with water.

5.4 Demolition: Where any existing structures are to be demolished, they will be done so inwardly (away from root protection areas / retained soil).

5.5 Levels: There is to be no alteration of ground levels within the area protected by protective fencing and/or ground protection, unless previously specified and agreed upon. The same applies for existing hard surfaces that are being used as ground protection.

5.6 Fires: No fires are to be lit within 20 metres of the stems of retained trees.

5.7 Above ground damage to trees: Care must be taken in planning the location and operation of machinery to avoid above ground damage to trees. BS5837 (2012) Section 6.2.4.1 states *'Planning of site operations should take sufficient account of wide loads, tall loads and plant with booms, jibs and counterweights (including drilling rigs) in order that they can operate without contacting retained trees. Such contact can result in serious damage to trees and might make their safe retention impossible. Consequently, any transit or traverse of plant in proximity to trees should be conducted under the supervision of a banksman, to ensure that adequate clearance of trees is always maintained. Access facilitation pruning should be undertaken where necessary to maintain this clearance.'*

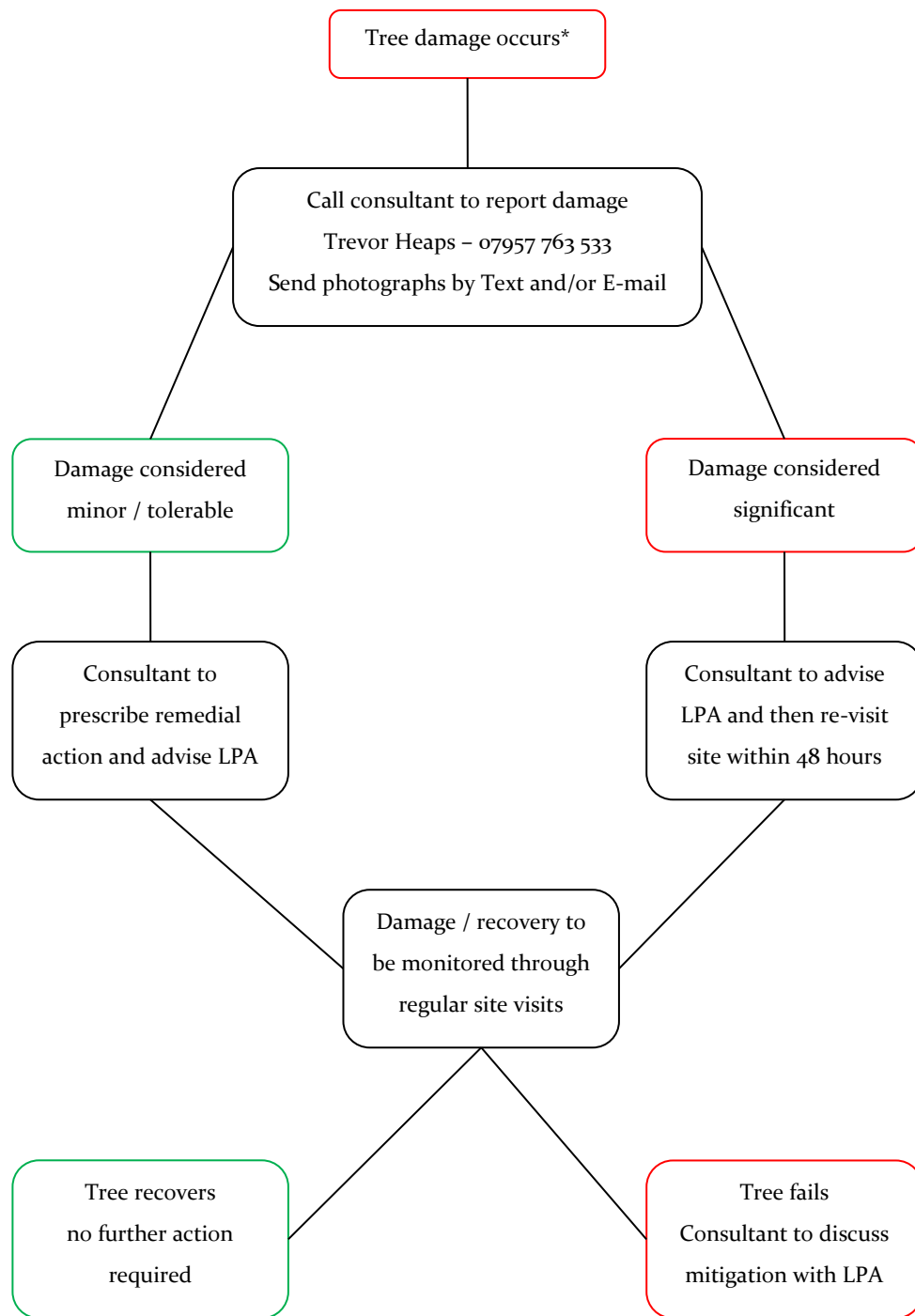
5.8 Remedial works and soil improvement: Exposed soils are easily compacted resulting in loss of water and gaseous exchange; this can lead to root death (and subsequently tree death).

5.8.1 To relieve ground compaction, which may have resulted from the use of vehicles or by the storage of materials, the soils should be broken up to allow air to penetrate and for the soil structure to be restored. There are various methods to achieve this, such as: auguring the soil by hand / fork or pneumatic excavation (e.g. with an air spade); both should be combined with soil structure improvements (see 5.8.2).

5.8.2 The soil structure can be improved by incorporating a compost or mulch within the topsoil, of 75-100mm in depth. This can be spread over the surface and gently forked into the soil. If bark chip is used as mulch, NPK fertilizer should be added to counteract the nitrogen depletion of the soil. There is also the option of adding mycorrhizal fungal which may also improve root function.

5.9 Choosing an arborist: When appointing a tree works contractor, please only use properly qualified and experienced companies who comply with current British Standards (3998) and always check that they carry Public Liability Insurance within a minimum of £2,000,000 cover, and the relevant Employers Liability Insurance. A list of contractors approved by the Arboricultural Association can be found at www.trees.org.uk or by calling 01242 522 152.

Appendix 6 - Procedure to follow in case of damage to retained trees



*Tree damage could include: unauthorised branch / root pruning; accidental damage to roots, stem, branches or crown; bark damage to vehicle / machinery strikes; and spillage of toxic materials within root protection areas (RPAs)

Appendix 7 - Induction form for all site personnel

Site name:

App. No.:

Appointed Site Supervisor:

- I have had explained to me by the Site Manager the key implications of the Arboricultural Method Statement relating to the development at the above site.
- I am aware that trees have shallow roots and any excavation works beneath the canopy could cause irreparable damage.
- I am aware that the tree protective fencing / ground protection must remain in its original position and must not be moved without the approval of the appointed Arboricultural Consultant.
- I understand that certain operations must be supervised by the appointed Arboricultural Consultant and that these must not start until the consultant is present and has given approval.
- I confirm that I will bring any concerns about potential damage to trees to the attention of the Site Manager.
- I am aware that I must not cause damage to any of the retained trees on or adjacent to the site. Damage may be caused by direct means (i.e. physical damage caused to roots or the trunk/branches of the tree) or by indirect means (e.g. by fire or toxic materials entering the rooting environment of the tree).

Print Name:

Sign Name:

Date:

Appendix 8 - Site inspection record

| | | | |
|-----------------------------------------------------------------------------------------------------------------------------------------------------------------------------------------------------------------------------------|-----------------------------------|-----------|--------------|
| Date: Time: Site: | Planning reference: | | |
| <p style="text-align: center;">Those present in addition to project arboriculturist:</p> <p>Client / Agent:</p> <p>Project / Site manager:</p> <p>LPA arboricultural officer:</p> <p>Other (specify):</p> | | | |
| | Yes | No | Notes |
| Tree protection measures located in accordance with TPP? | | | |
| Any disturbance within construction exclusion zone? | | | |
| Any materials stored within construction exclusion zone? | | | |
| Any evidence of damage to tree roots, stems or canopies? | | | |
| Any works programmed before next planned site visit that may affect retained trees? (if yes, provide details below) | | | |
| Additional site visit required to ensure compliance with required action? (Y / N) Proposed visit date: | | | |
| Signed: Date: | | | |

Appendix 9: Tree Protection Plan

Temporary ground protection should be able to support any traffic entering or using the site without being distorted or causing compaction of underlying soil and might comprise one of the following:

- 1. For pedestrian-movements only, a single thickness of scaffold boards placed either on top of a driven scaffold frame, to form a suspended walkway, or on top of a compression-resistant layer (e.g. 100 mm depth of woodchip), laid onto a geotextile membrane;
- 2. For pedestrian-operated plant up to a gross weight of 2 t, proprietary, inter-linked ground protection boards placed on top of a compression-resistant layer (e.g. 150 mm depth of woodchip), laid onto a geotextile membrane;
- 3. For wheeled or tracked construction traffic exceeding 2 t gross weight, an alternative system (e.g. proprietary systems or pre-cast reinforced concrete slabs) to an engineering specification designed in conjunction with arboricultural advice, to accommodate the likely loading to which it will be subjected.

NOTE: If ground protection is to be laid near areas to be excavated, sheet piling should be used to shore up the sides of the excavations prior to being used (by pedestrians or machinery)

At this site, operations are to occur in the following sequence:

- 1. Hold pre-commencement site meeting with project arboriculturist, building contractor and arboricultural officer (prior to the commencement of any development work commencing on site). The contractor will be required to read and sign the induction form (see Appendix 7).
- 2. Demolish existing rear conservatory, leaving the foundations on the south-eastern side in situ (to avoid disturbing the roots of the third-party trees).
- 3. Erect protective fencing along the position(s) shown by the dashed red line/s on the TPP.
- 4. Arboricultural Consultant to check Tree Protection at this stage.
- 5. Commence construction works (relaying of block paving to be done last).
- 6. Working from on top of existing hard surfaces and/or suitable ground protection, excavate (by hand) the holes for the new concrete brick pier foundation pads.
- 7. Remove existing hard surface (existing block-paved driveway) and re-lay with permeable block paving ('no dig' not required)
- 8. Remove tree protection when all construction activity has ended.
- 9. Carry out soft landscaping works.

During development, the existing hard surface of the block-paved driveway will provide ample protection for any roots growing beneath

The post holes for the new brick piers will be hand-dug.

The existing conservatory building will be demolished by hand and, to minimise root disruption, the foundations on the south-eastern side will be left in situ

Plan Legend

- Tree to be retained
- Tree to be removed
- Category A Tree
- Category B Tree
- Category C Tree
- Category U Tree

Areas, groups or woodlands are shown as polygons using the same colours as above. Dashed lines show removals

- Root Protection Area (RPA)
Original in dotted light blue if amended.
- Protective fencing
- CEZ
Construction & storage exclusion zone

NOTE: Stem diameters have been increased on this plan by 250% to make identification of smaller trees easier

Scale: 1:250 @ A3
0 5m 10m

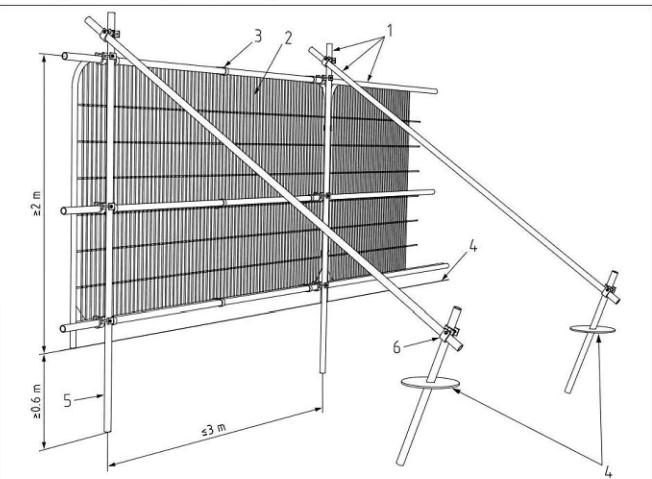
Site Address: 9 Harley Road
London, NW3 3BX
Client: Mr & Mrs Polychronopoulos
Drawing No: TH/A3/2008/TPP
Job Ref: TH 2008
Date: 16/06/2019

Trevor Heaps
Arboricultural Consultancy Ltd



07957 763 533
trevor@trevorheaps.co.uk
www.trevorheaps.co.uk

Default specification for protective fencing



- Key
- 1 Standard scaffold poles
 - 2 Heavy gauge 2 m tall galvanized tube and welded mesh infill panels
 - 3 Panels secured to uprights and cross-members with wire ties
 - 4 Ground level
 - 5 Uprights driven into the ground until secure (minimum depth 0.6 m)
 - 6 Standard scaffold clamps