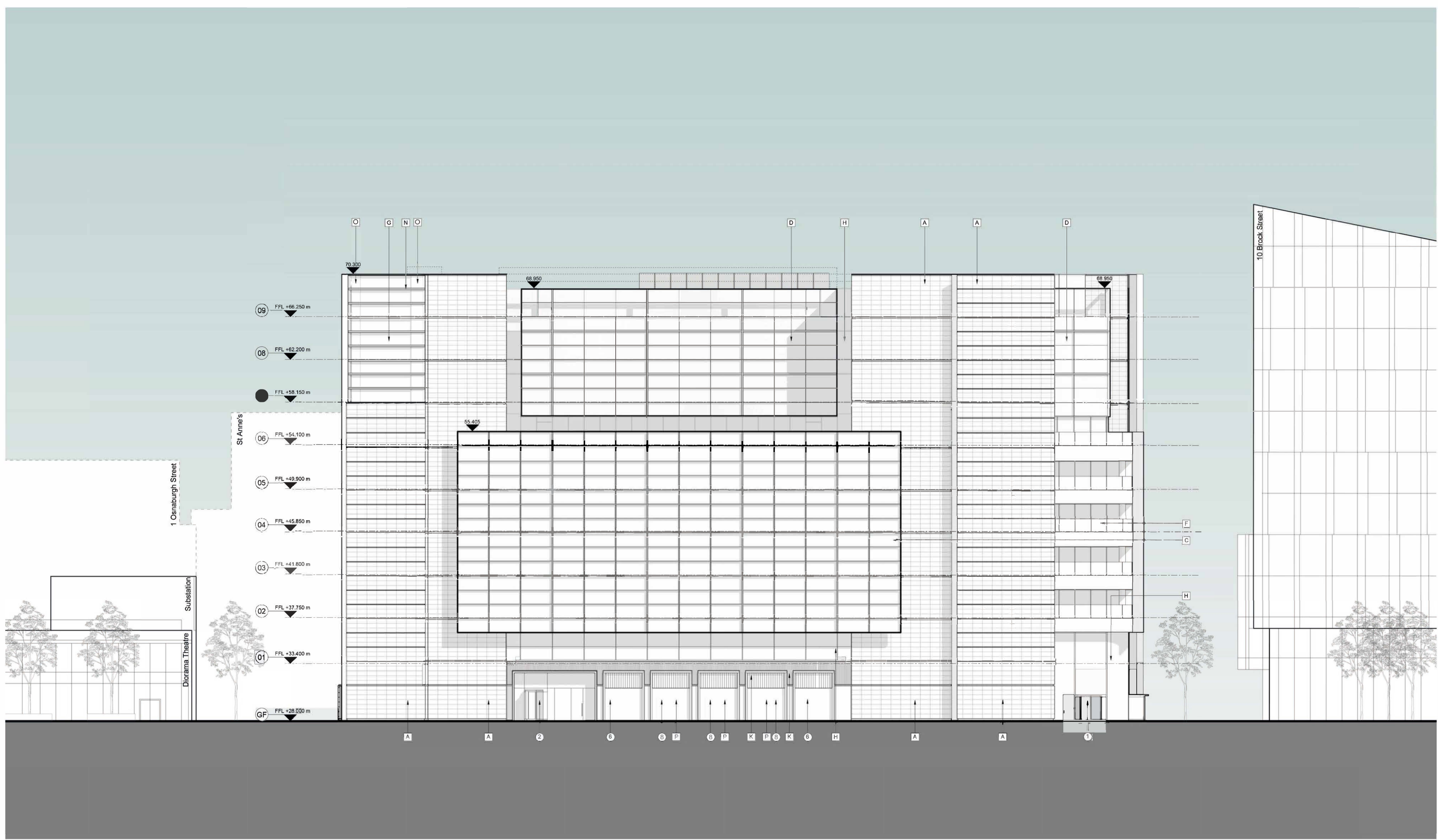


A1
1
2
3
4
5
6
7
8
9
10
11

A B C D E F G H I J K L M N



FIGURED DIMENSIONS ONLY TO BE USED

Safety, Health and Environmental Information
 In addition to the hazards/risks normally associated with the types of work detailed on this drawing and noted in the designer risk assessments and health and safety plan, note the following:

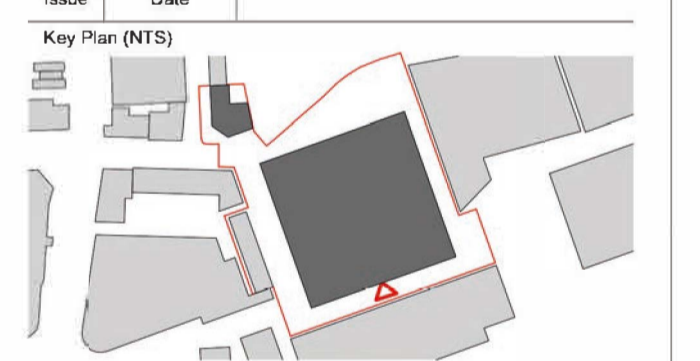
- It is assumed that all works on this drawing will be carried out by a competent contractor working, where appropriate, to an approved method statement.
- Where applicable, significant residual risks are highlighted in the body of the drawing.



- Key**
- Material Types:**
- A Stone
 - B Metal and Glass Atrium Roof
 - C Metal and Glass Double Screen
 - D Metal and Glass Screen
 - E Metal, Glass and Stone Screen
 - F Metal and Glass Terrace
 - G Glazed Cores
 - H Glazed Facades
 - I Glazed Screen
 - J Glazed Shop Fronts
 - K Metal Fins
 - L Metal Louvres
 - M Urban Art
 - N Aluminum Blades
 - O Spandrel Panel
 - P Metal & Glass Bi-fold Doors

- Building Entrances & Uses :**
- 1 Office Entrance 1
 - 2 Office Entrance 2
 - 3 Workspace Entrance
 - 4 Bike Storage Entrance
 - 5 Gym Entrance
 - 6 Retail Entrance
 - 7 Security - Check Point
 - 8 Retail Entrance - Bi-fold Doors

Issue	Date	Description
P05	02/10/19	Issued for Planning
P04	09/10/18	Issued for Planning
P03	22/08/18	Issued for Planning
P02	10/04/18	Issued for Planning
P01	13/10/16	Issued for Planning



ARUP ASSOCIATES
 6 Fitzroy Street
 London
 W1T 4BJ
 tel: 020 7755 2525
 fax: 020 7755 2561
 email: info@arupassociates.com

Client:
British Land Property Management Limited

Job Title:
1 Triton Square and St. Anne's

Drawing Title:
**1 Triton Square
 General Arrangement Elevation
 South Elevation
 Proposed**

Scale at A1: 1 : 200

Discipline: Architecture

Job No: 246868
 Drawing Status: Planning

Drawing No: 246868-A_A-XX-XX-DR-AX-30530
 Issue: P05