



1 TRITON SQUARE

NMA BIFOLD

246868-SKB-088

REVISION 01

OCTOBER 2019

INTRODUCTION

The purpose of this report is to cover the Non Material Ammendment to the Bifold doors on the South Elevation. The doors are to be installed in three of the portal frames on the ground floor (See marked up elevation).

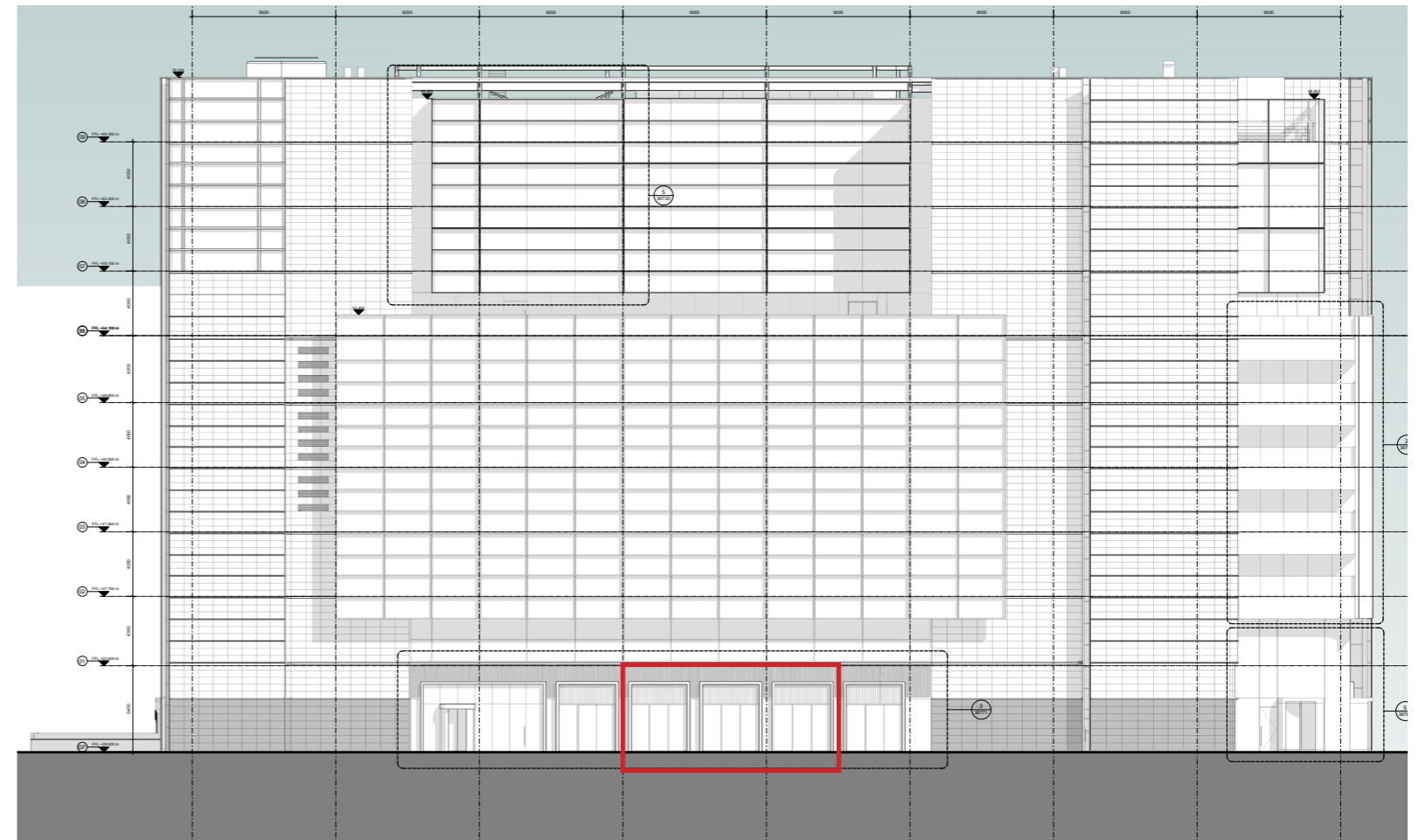
In the approved documents the portals contained 3 fixed double glazed panels that were that were all equal in size.

The proposed change is to switch out these fixed glazed panels for Bifold doors consisting of four leaves.

The decision to go for a four leaf bifold over a three leaf bifold was dictated by the size and weight of the glass. The size of the double glazed laminated glass in the three leaf bifold would exceed the maximum allowed weight for the system (approx 1200m W x 3000m H).

Opting for a four leaf bifold the size of each leaf has been reduced (approx 800mm W x 3000mm H). This brings the weight of the glass down back under the allowable limits.

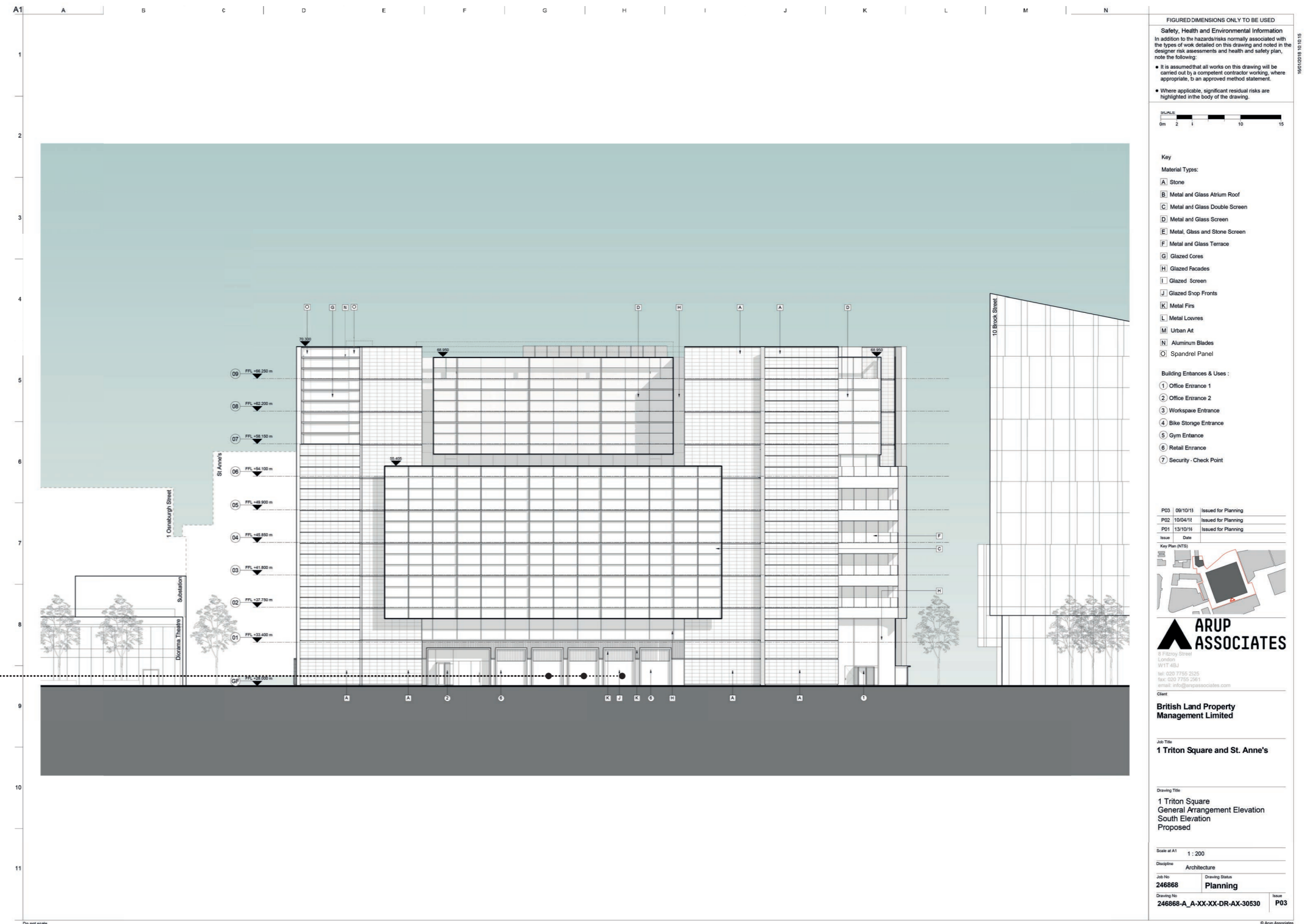
The finish of the new bifold doors will match that of the adjacent facade.



East Elevation

Approved Planning Drawing - South Elevation

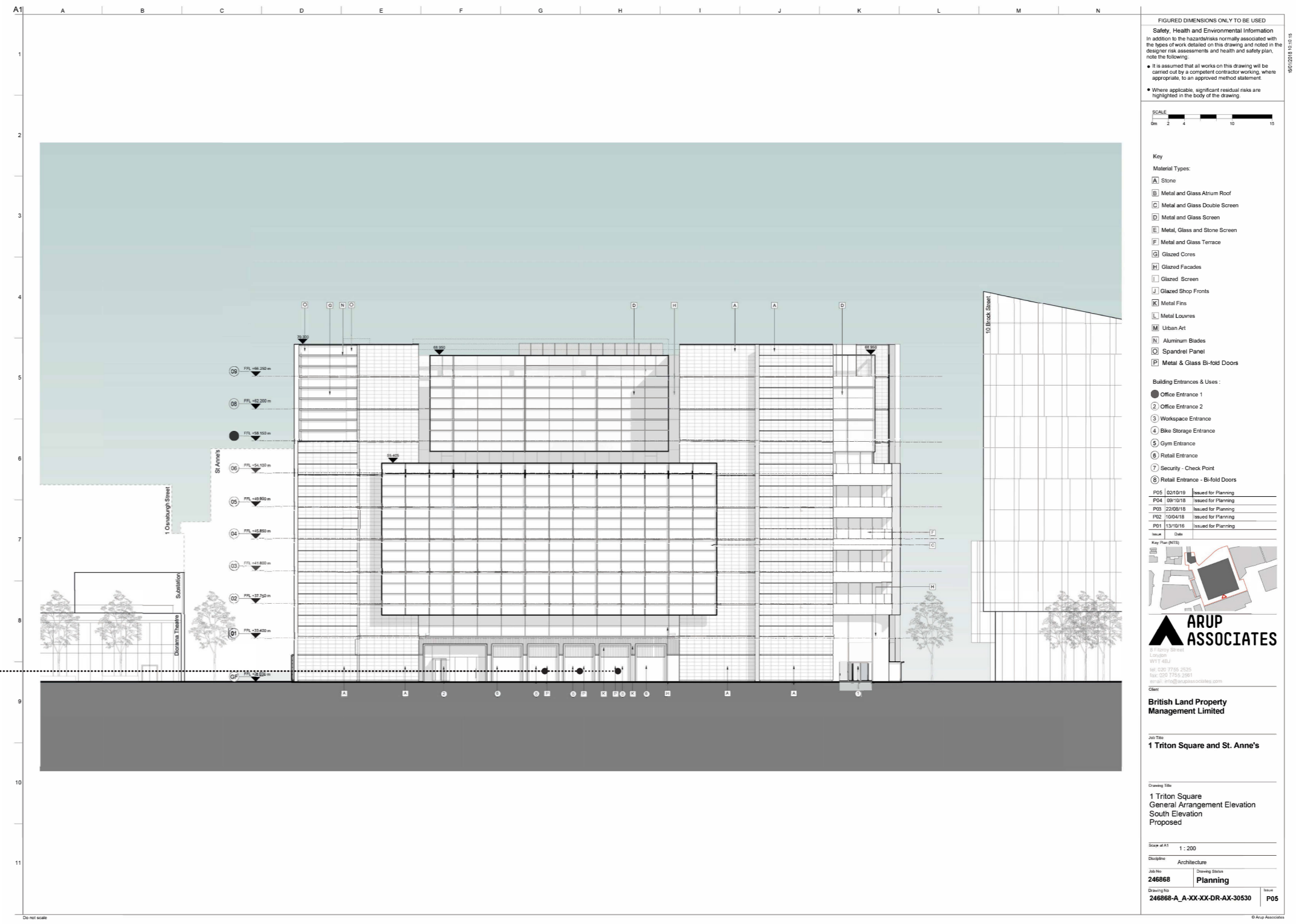
In the original approved elevation the facade to the GF South Elevation was indicated as 'Glazed Shop Fronts' with 'metal fins' at high level.



South Elevation

Updated Planning Drawing - South Elevation

The labels have been updated to include 'metal and glass bifold doors' & 'retail entrance - bifold doors'



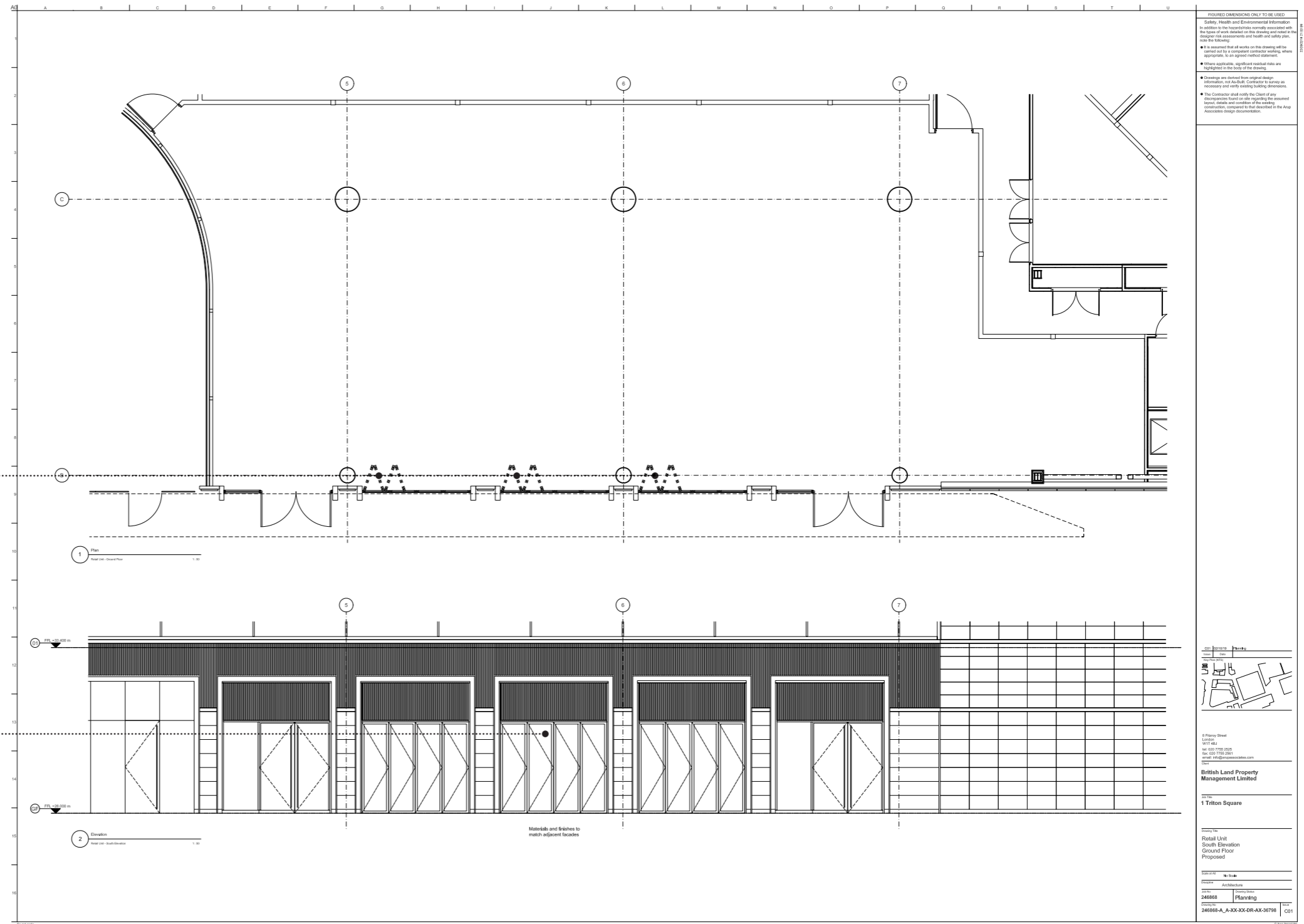
South Elevation

New Planning Drawing - Plan & Elevation

A new drawing has been created to show the area of the bifolds in greater detail.

Bifold doors to fold inwards

Elevation showing the bifolds within the context of the outward opening adjacent double doors.



South Elevation