

**GENERAL NOTES**

1. THIS DRAWING IS THE PROPERTY OF LXA. NO BOX NO. 201906. DUBAI. IT IS FORBIDDEN TO REPRODUCE ITS CONTENTS IN ANY FORM, EXCEPT FOR THE INTENDED PURPOSE.
2. THIS DRAWING IS NOT TO BE SCALED. THE DIMENSIONS ARE IN MILLIMETERS UNLESS OTHERWISE SPECIFIED.
3. ANY DISCREPANCIES ARE TO BE BROUGHT TO THE ATTN OF LXA AND RESOLVED BEFORE THE COMMENCEMENT OF ANY WORK.
4. THIS DRAWING IS TO BE READ IN CONJUNCTION WITH RELEVANT DETAIL DRAWINGS AS MENTIONED IN THE DRAWING.
5. CONTRACTOR TO CONSTRUCT A MOCKUP FOR APPROVAL OF FINISHES & DETAILS, AND GET A SIGN OFF FROM CLIENTS & ARCHITECTS.
6. THIS DRAWING TO BE READ IN TANDER WITH THE DETAILSCHEDULES/SPECIFICATIONS AS REQUIRED.

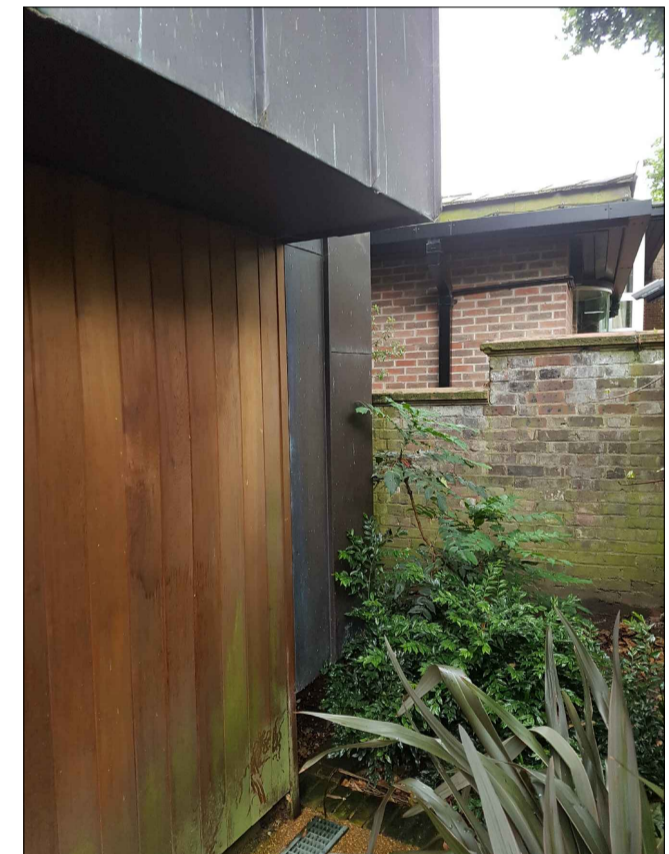
**KEYPLAN**



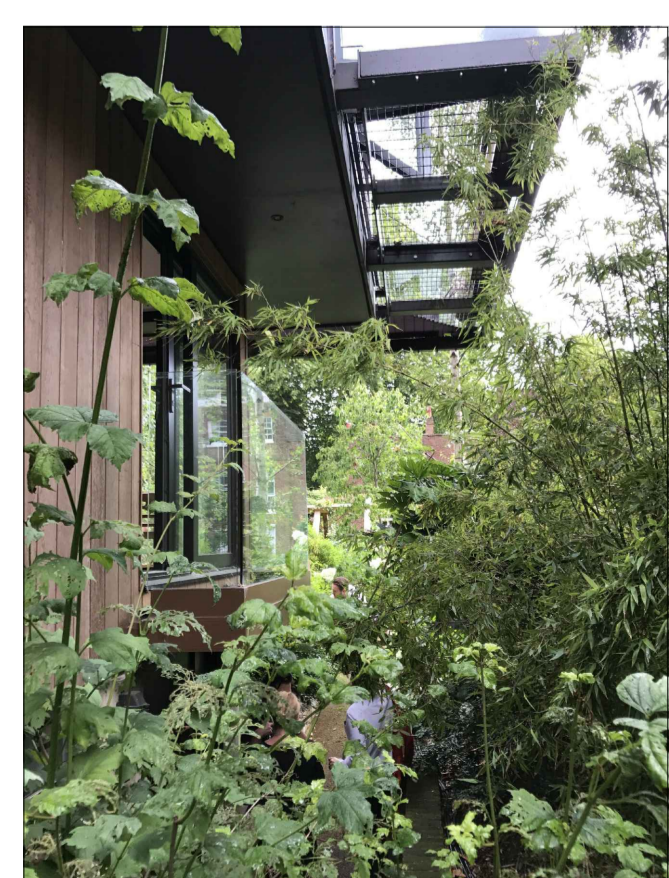
View from garden towards Tree house



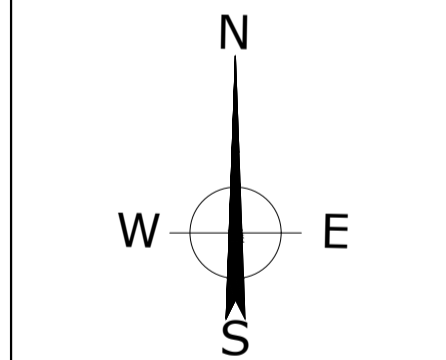
Planted gap between Tree House and garden wall to 15 Well Road



View at garden wall to 15 Well Road



View from garden wall towards Juliette balcony



**REVISIONS**

No.	Date	By	Issue/Revision Details
-	16/10/19	AM	Issued to Planning

**LXA** London  
 Hatfield House  
 52-54 Stamford Street  
 London, SE1 1LX  
 E: info@lxa.com  
 W: www.lxa.com

**DRAWING TITLE:**  
 East Heath Road - The Tree House  
 Site Plan - Proposed

**PROJECT:**  
 Foley House - Garden Studio  
 Hampstead, London

**CLIENT:**  
 Annette & Nick Mason

Rev No:	Date:	
-	October 2019	
Drawn:	Checked:	Approved:
AM	-	-
Scale:	Drawing No:	
1:100 @ A1	LXA-1367-103-GA	

