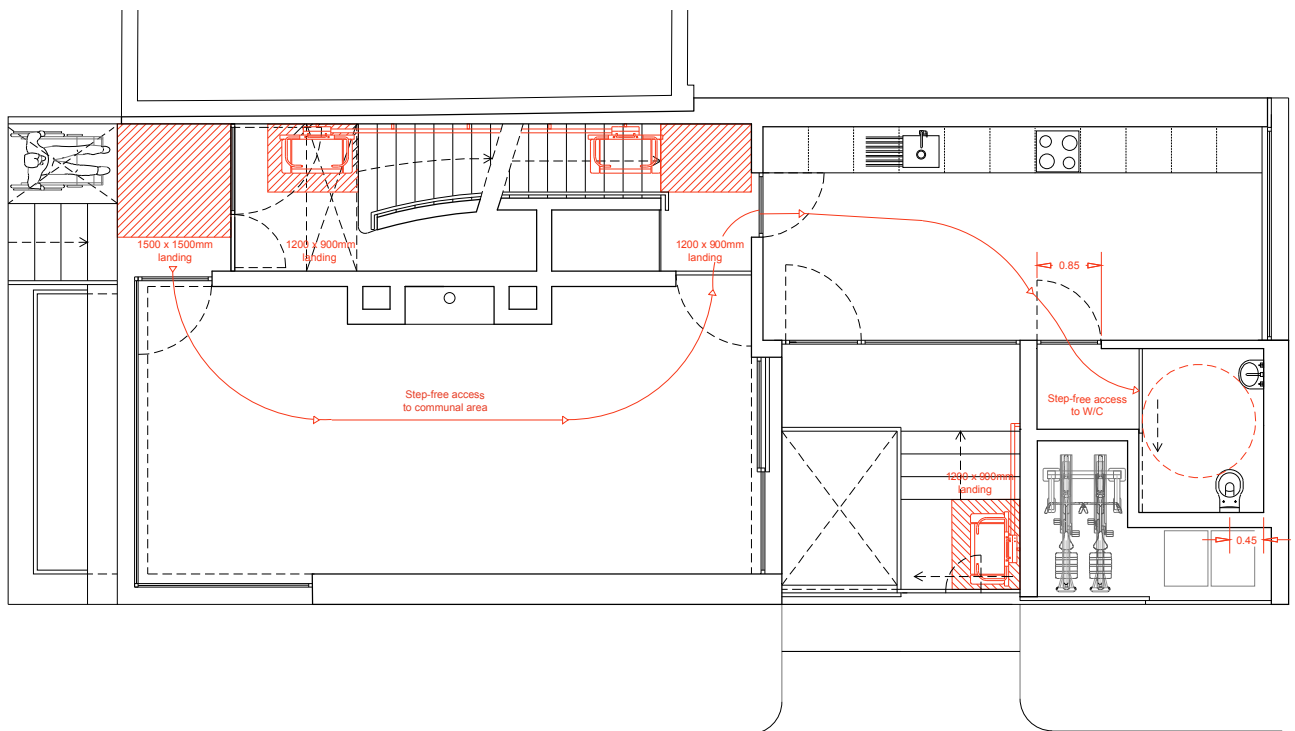


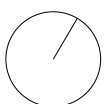
# M4 (2) Accessible and Adaptable Dwellings

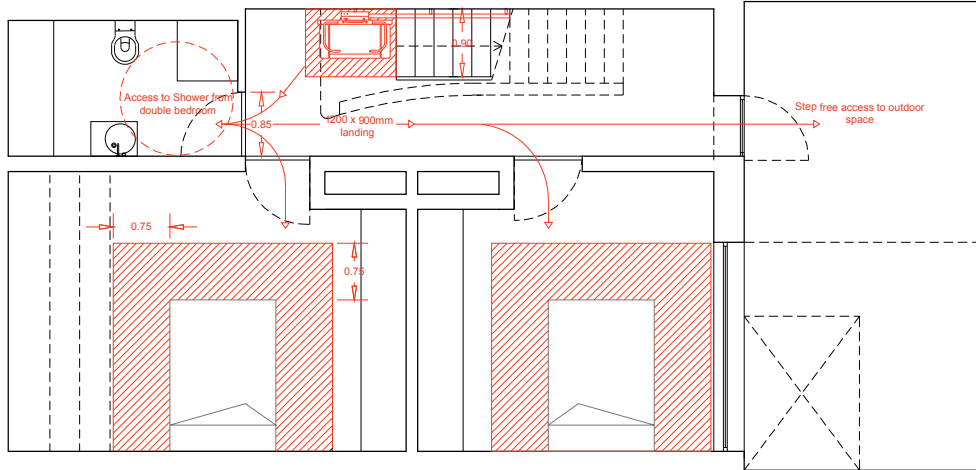
This document outlines how our proposal complies with Part M of the Building Regulations 2010.

G

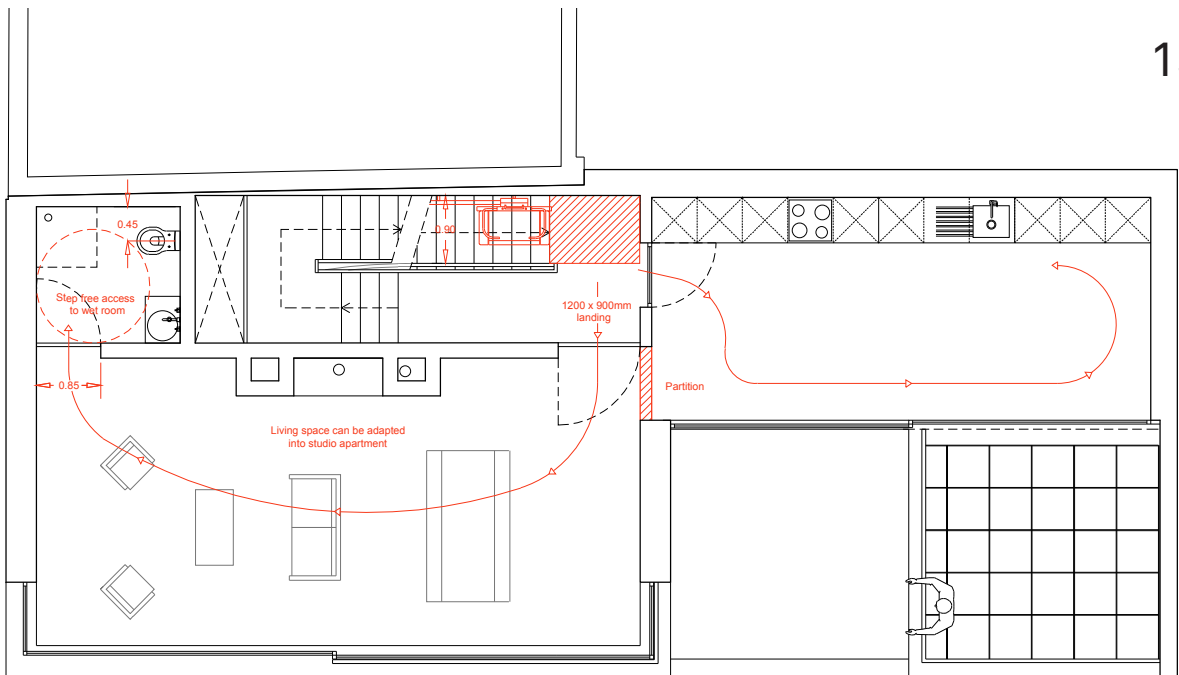


For a wheelchair user the ground floor is accessed via a lift with a landing of 1500mm x 1500mm. On entering the ground floor flat step-free access is achieved throughout, with the occupant able to access communal areas and the W/C. Stairs both up to the 1st floor and down to the basement are 900mm wide, capable of fitting a wheelchair lift.





The Basement is in compliance with M4 (2). The stairs width is 900mm, sufficient room to fit a wheelchair lift. Once accessed the basement is step-free allowing a wheelchair user access to all rooms and outdoor space. Surrounding the double beds is a clearance greater than 750mm.



The first floor is accessed via a wheelchair lift, once reached there is step-free access to rooms. The living space can be converted into a studio flat after creating a partition from the kitchen.

