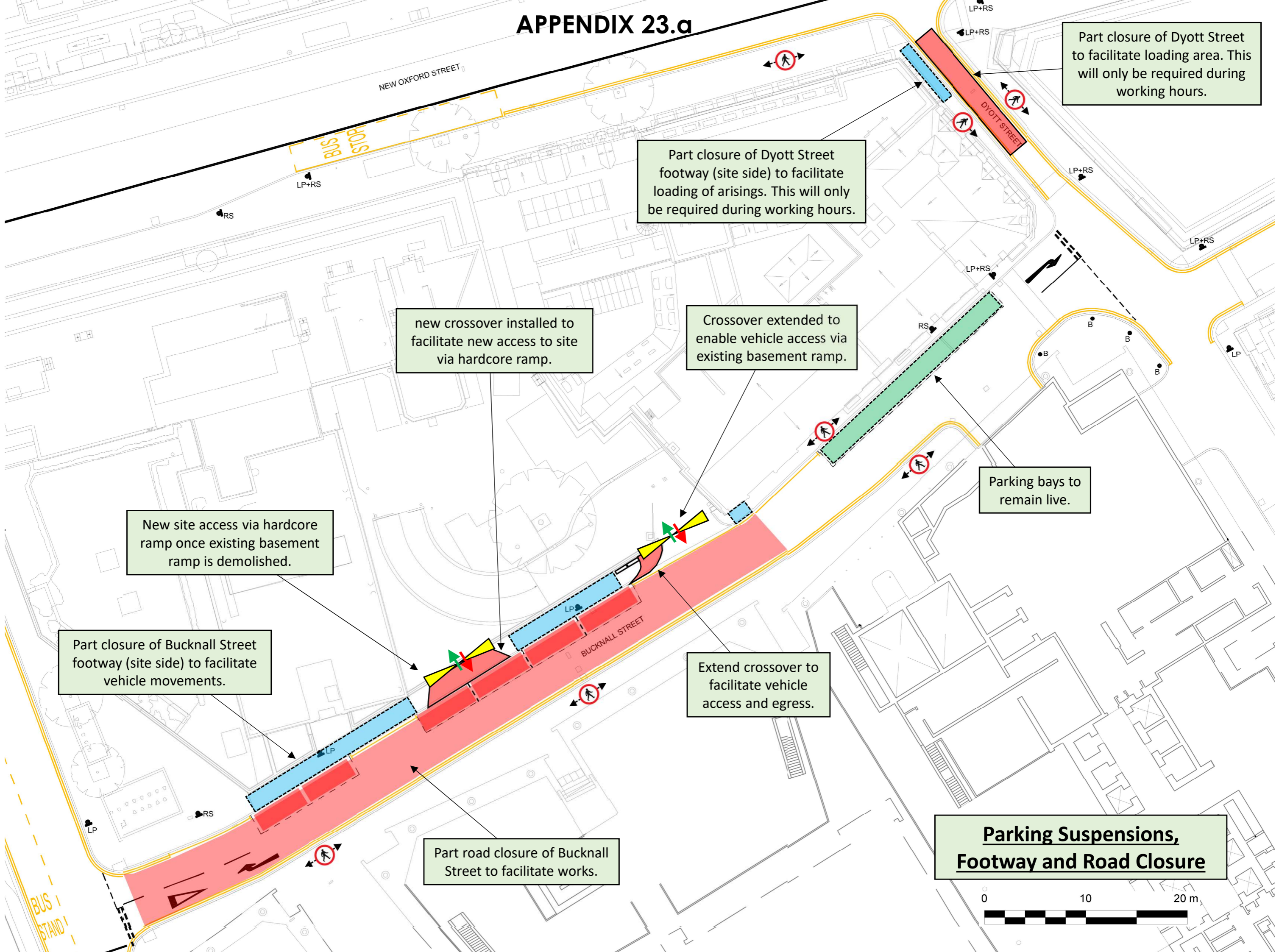


# APPENDIX 23.a



Part closure of Dyott Street to facilitate loading area. This will only be required during working hours.

Part closure of Dyott Street footway (site side) to facilitate loading of arisings. This will only be required during working hours.

new crossover installed to facilitate new access to site via hardcore ramp.

Crossover extended to enable vehicle access via existing basement ramp.

New site access via hardcore ramp once existing basement ramp is demolished.

Parking bays to remain live.

Part closure of Bucknall Street footway (site side) to facilitate vehicle movements.

Extend crossover to facilitate vehicle access and egress.

Part road closure of Bucknall Street to facilitate works.

**Parking Suspensions, Footway and Road Closure**

